



AT A GLANCE:

**17700 SE Mill Plain Boulevard
Suite 100
Vancouver, WA 98683**

Submarket: Vancouver
Property Type: Office
Available SqFt: 2,919
Building SqFt: 21,353
Monthly Rent: \$2.08/ sq. ft.
Annual Rent: \$25.00/ sq. ft.
Lease Type: Full Service

Contact:

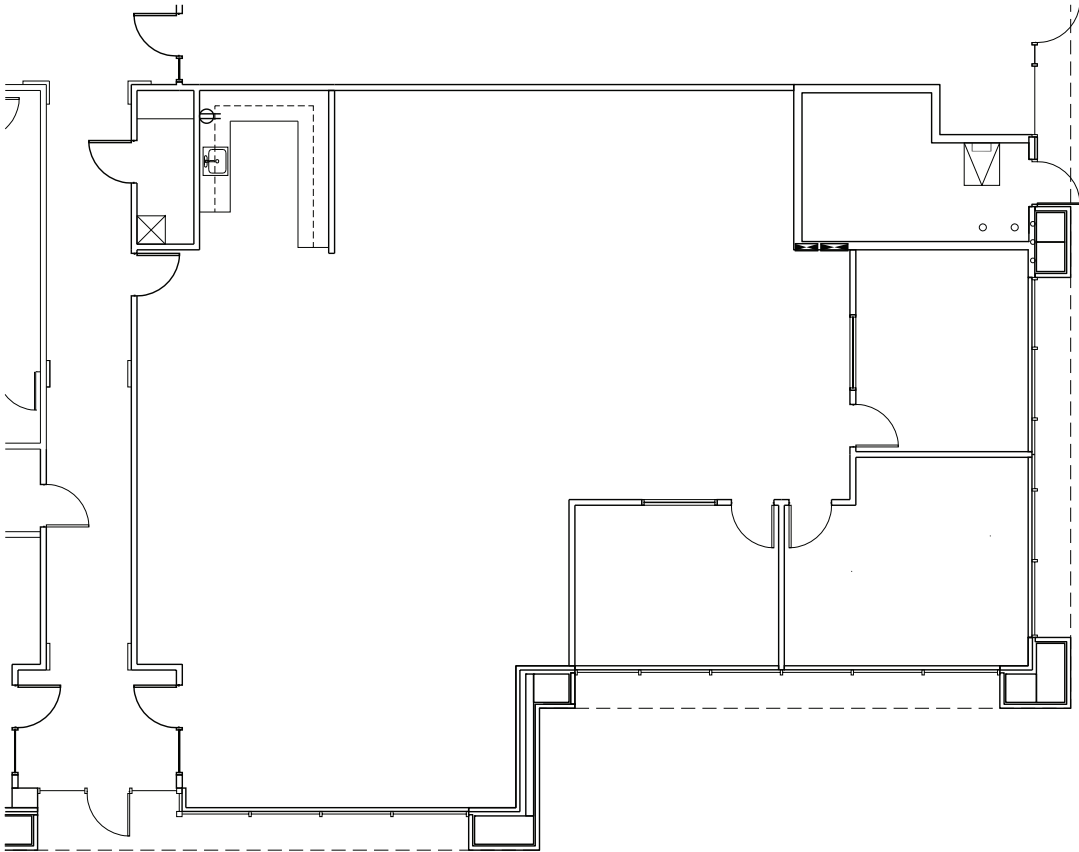
Jake Bigby
jakeb@pactrust.com
Phone: (360) 737-6300

OFFICE SPACE

Building 647 - 2,919 sq.ft. space for lease

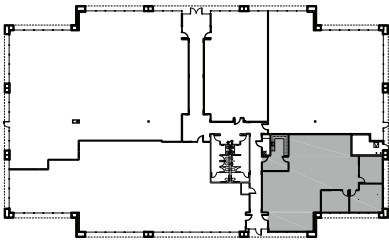
HIGHLIGHTS:

- 2,919 sq.ft. office space
- Full service
- \$25.00/sq.ft.
- 4 /1,000 sq.ft. parking ratio



AVAILABLE

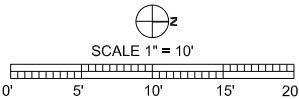
2,919 SF Office
2,919 SF Total



BUILDING PLAN

COLUMBIA TECH CENTER

ctc647 (Bldg. #647)
17700 SE MILL PLAIN BLVD., #100
VANCOUVER, WA 98683





About Columbia Tech Center

Columbia Tech Center (CTC) is a master-planned mixed-use development located in Vancouver, Washington within the highly desirable Clark County technology corridor. Situated on 480 acres, CTC has over 3.65 million square feet of high quality office, flex/ industrial, medical, retail, hotel and residential space with significant development and leasing opportunities available. CTC is located along SE Mill Plain Boulevard close to Washington SR-14 and Interstate-205. Drive time to Portland International Airport is approximately 12 minutes and downtown Portland is approximately 25 minutes away.

Several companies have their corporate or regional offices at CTC including Banfield Pet Hospital, Nautilus, HP, Kokusai, Kuni Automotive and PeaceHealth. CTC is beautifully landscaped with a 12-acre park, amphitheater and boardwalk, and offers amenities like food trucks, pedestrian and bike pathways and a basketball court. Affordable housing is available nearby and the community is recognized for its excellent schools.



Columbia Tech Center • 360.737.6300 or 503.624.6300 • www.ColumbiaTechCenter.com

