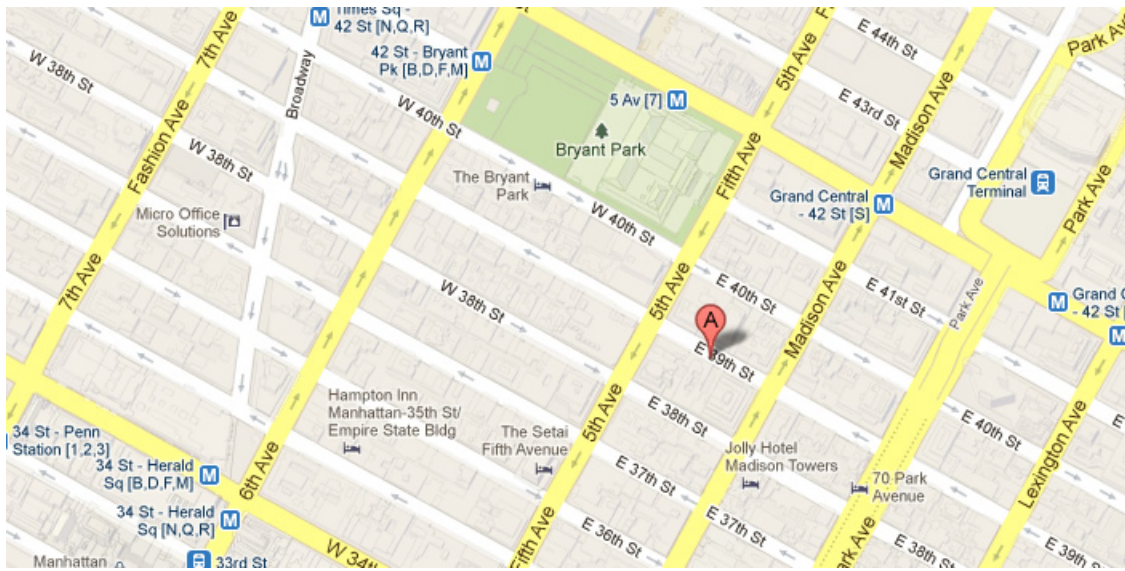




10 EAST 39TH STREET, New York, NY 10016



95,364.00 SF

Up To 4,791 SF Available

Office building with street level retail

Lobby renovated and new elevator cabs installed in 2011

Built: 1915 Architect: Herman Lee Meader

Tenants

EMPIRE CHIROPRACTIC, PC

CHARM OFFICES LLC

CROWN TROPHY

ASIAN FOOD CULTURE INC,

MRMD CORP.

For more information call

1- 212- 249- 1550

KOEPEL ROSEN

40 East 69th Street

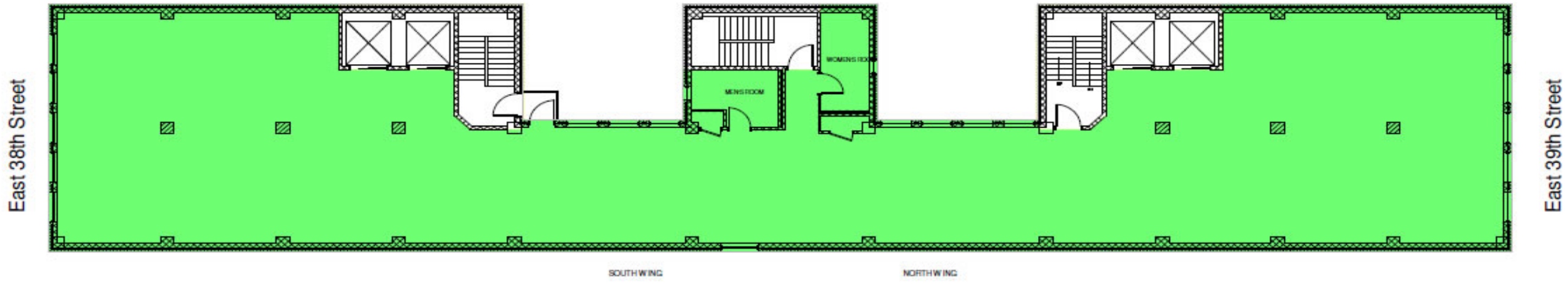
New York, NY 10021

dkoepfel@koeppelrosen.com

10 EAST 39TH STREET, New York, NY 10016

10 East 39th Street

Typical Floor Plan



 Koeppel Rosen LLC
 40 East 69th Street
 New York, NY 10021
 212-249-1550
 www.koeppe Rosen.com

Note: All dimensions and conditions are approximate and for information only

Scale: NTS
 Date: February 2, 2016



For more information call
 1- 212- 249- 1550
 KOEPPEL ROSEN
 40 East 69th Street
 New York, NY 10021
 dkoeppe l@koeppe Rosen.com