

1438

OAK STREET
LOS ANGELES, CA 90015

FOR SALE OWNER/USER OFFICE BUILDING



Charles Dunn

CHARLES DUNN COMPANY, INC.

800 West Sixth Street, Suite 800 | Los Angeles, CA 90017 | Lic. #01201641 | charlesdunn.com

CONTACT:

CHRIS STECK

Managing Director

Lic. #01841338

Direct | 213.534.3216

csteck@charlesdunn.com

CHRISTOPHER J. GIORDANO

Director

Lic. # 01928706

Direct | 213.534.3280

cgiordano@charlesdunn.com

JOHN ANTHONY, SIOR

Senior Managing Director

Lic. #01226464

Direct | 213.534.3245

janthony@charlesdunn.com

PROPERTY OVERVIEW



1438 OAK STREET LOS ANGELES, CA 90015

PROPERTY FACTS

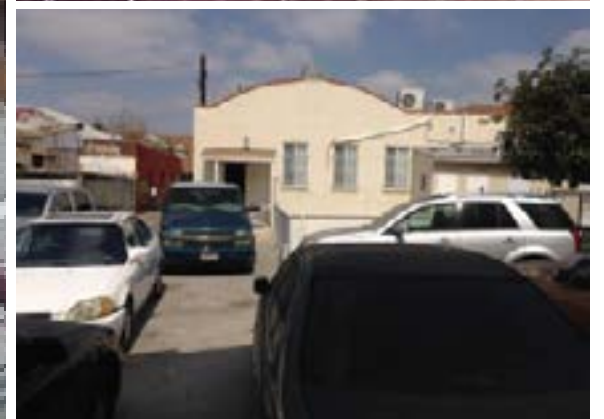
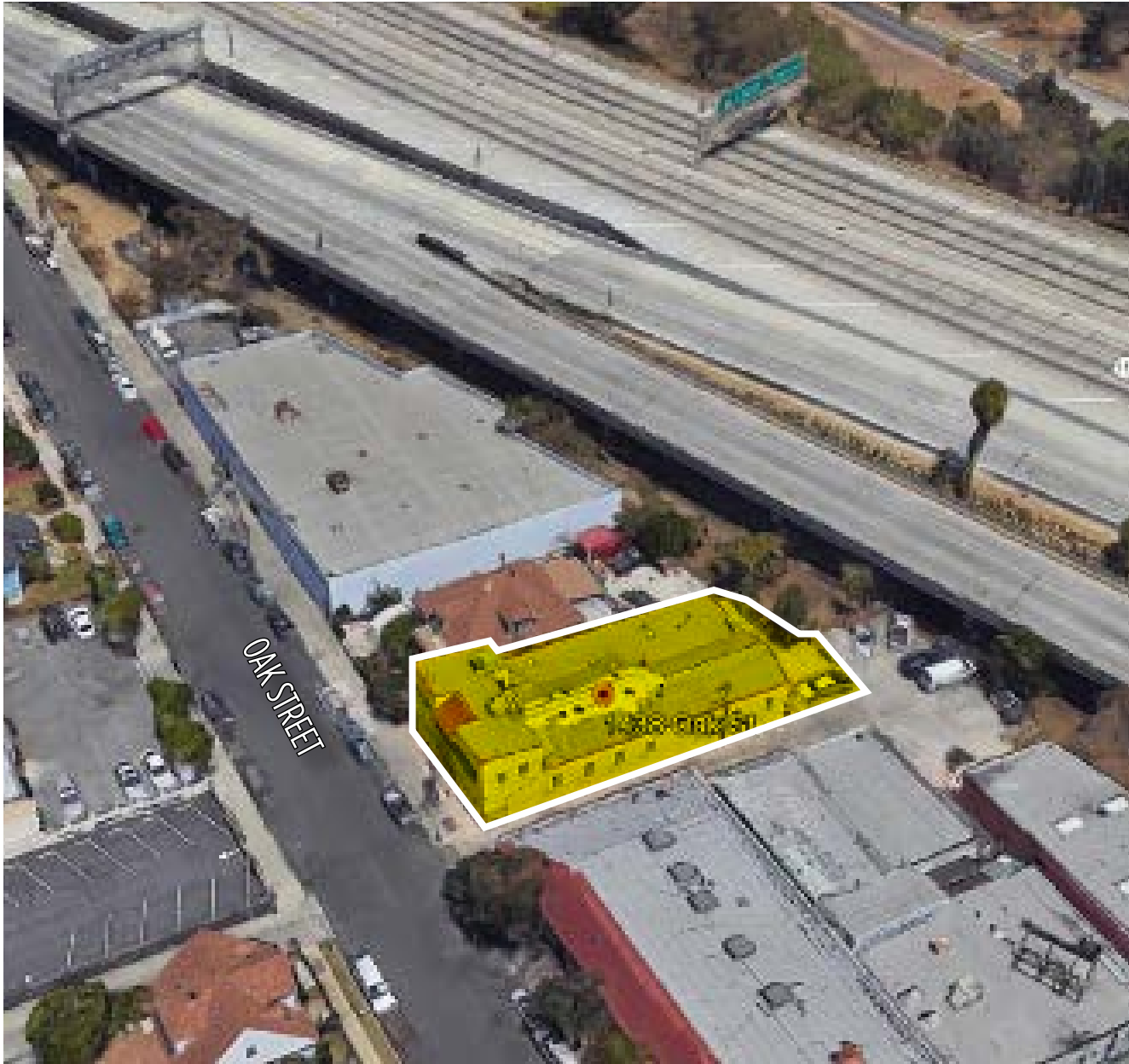
- › **Sale Price: \$2,000,000 (\$367.78/SF)**
- › Approximately ± 5,438 SF of building
- › Approximately ± 6,002 SF of land
- › Approximately 8 parking spaces located in the rear of building
- › Two-story building, ideal for office owner/user

PROPERTY HIGHLIGHTS

- › Rare church property for sale
- › Built out recording studio, full kitchen, and large congregation room
- › Near South Park/LA Live



PROPERTY AERIAL & PHOTOS





Charles Dunn Company, Inc.

800 West Sixth Street, Suite 800

Los Angeles, CA 90017

License #01201641

www.charlesdunn.com | 213.481.1800

Chris Steck

Managing Director

License #01841338

213.534.3216

csteck@charlesdunn.com

Christopher Giordano

Director

License #01928706

213.534.3280

cgiordano@charlesdunn.com

John C. Anthony

Senior Managing Director

License #01226464

213.534.3245

janthony@charlesdunn.com

© Charles Dunn Company, Inc. These materials are based on information and content provided by others which we believe are accurate. No guarantee, warranty or representation is made by the Charles Dunn Company or its personnel, and all interested parties must independently verify its accuracy and completeness. As well, any projections, assumptions, opinion, or estimates are used for example only and do not represent the current or future performance of the identified property. Your tax, financial, legal and toxic substance advisors should conduct a careful investigation of the property and its suitability for your needs, including land use limitations.