



SOMERSET COMMERCE CENTER

100 Randolph Ave. Somerset, NJ

NOW AVAILABLE

**Class B Office / Flex
Indoor Recreation / Daycare**



Building Specs – 100 Randolph Road

Total building size

153,000 sf

Available

First Floor – 15,234 sf (office/flex)
(divisible to 10,000 sf)

Second Floor – 2,619 sf (office)

Power

3000 Amps @ 480 volts

Available loading

Double door to 15,234 sf unit

Elevator

1 Passenger

Zoning

Office, manufacturing,
warehouse, indoor recreation &
daycare

OPEX

OPEX (excluding utilities)\$2.01/sf

Taxes \$1.80/sf

Insurance \$0.21/sf

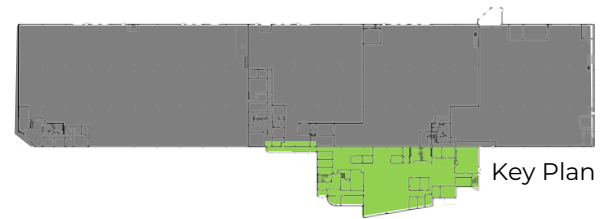
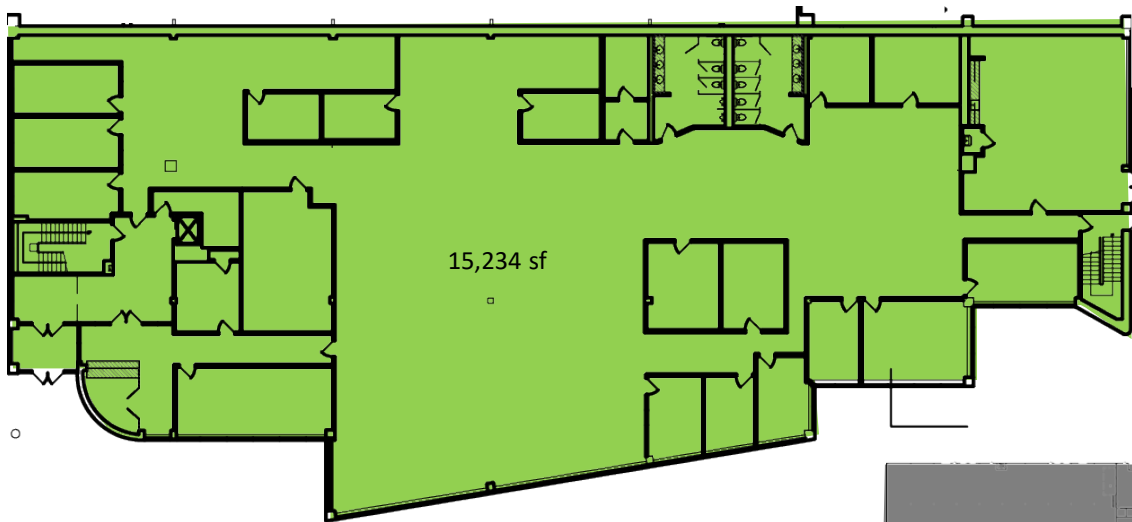
Owned & Managed by



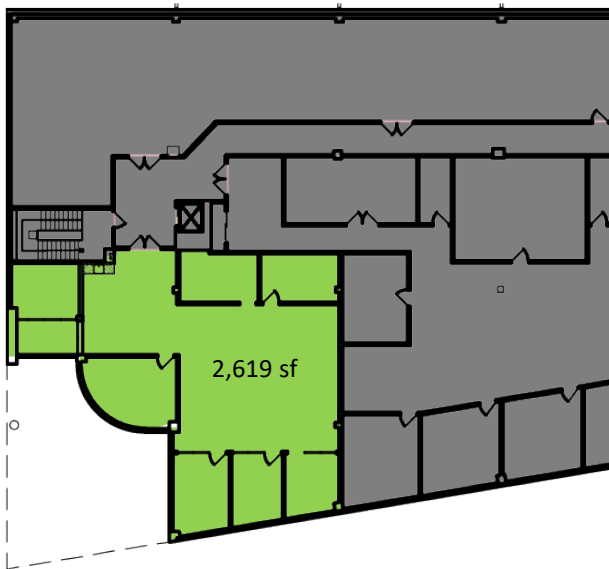
IVY REALTY

www.ivy-realty.com





Second Floor



For more information please contact:

Jim Medenbach

Managing Director

+1 973 829 4710

jim.medenbach@am.jll.com

Bob Ryan

Senior Vice President

+1 973 829 4717

bobs.ryan@am.jll.com

Brian Golden

Managing Director

+1 732 590 4169

brian.golden@am.jll.com