



## CYPRESS POINT BUSINESS PARK

OFFICE SPACE FOR LEASE

# CYPRESS POINT BUSINESS PARK

## OFFICE SPACE FOR LEASE

Cypress Point is a 40 acre business park located near I-95 and J. Turner Butler Blvd offering office space in a master planned, well landscaped park surrounding 5 and 10 acre lakes that include lake front pavilions and a walking/jogging trail

### AVAILABILITIES

- 8211 CYPRESS PLAZA DRIVE  
15,200 SF OF OFFICE SPACE AVAILABLE
- 8120 NATIONS WAY – BLDG 200  
9,208 SF OF OFFICE SPACE AVAILABLE

### PROPERTY FEATURES

- Variety of space available
  - Call center, disaster recovery and data center space
  - HQ/Regional HQ
- Convenient access to I-95 & JTB
- JTA Bus service to the Park
- On site property management

### BUILDING FEATURES

- Efficient space design
- Sizes start at 9,208 SF
- Competitive Lease rates
- Attractive tenant improvement allowances
- Redundant Fiber Loop
- Space planning services included
- Minimum 6/1,000 parking



For more information, please contact:

**MARK SCOTT, SIOR**

Senior Vice President

O 904.345.2099

M 904.699.3518

Mark.Scott@foundrycommercial.com

Licensed Real Estate Brokers

**BRAD R. CHRISCHILLES**

Principal

904.345.2020

Brad.Chrischilles@foundrycommercial.com

Licensed Real Estate Brokers

Although the information contained herein was provided by sources believed to be reliable, Foundry Commercial makes no representation, expressed or implied, as to its accuracy and said information is subject to errors, omissions or changes.

**FOUNDRY**  
COMMERCIAL

6440 Southpoint Parkway, Suite #100  
Jacksonville, FL 32216

[foundrycommercial.com](http://foundrycommercial.com)

# CYPRESS POINT BUSINESS PARK

## OFFICE SPACE FOR LEASE

### CYPRESS POINT BUSINESS PARK



For more information, please contact:

**MARK SCOTT, SIOR**

Senior Vice President

O 904.345.2099

M 904.699.3518

Mark.Scott@foundrycommercial.com

Licensed Real Estate Brokers

**BRAD R. CHRISCHILLES**

Principal

904.345.2020

Brad.Chrischilles@foundrycommercial.com

Licensed Real Estate Brokers

Although the information contained herein was provided by sources believed to be reliable, Foundry Commercial makes no representation, expressed or implied, as to its accuracy and said information is subject to errors, omissions or changes.

**FOUNDRY**  
COMMERCIAL

6440 Southpoint Parkway, Suite #100  
Jacksonville, FL 32216

[foundrycommercial.com](http://foundrycommercial.com)

# CYPRESS POINT BUSINESS PARK

## OFFICE SPACE FOR LEASE

### 8211 CYPRESS PLAZA DRIVE – 15,200 SF AVAILABLE



For more information, please contact:

**MARK SCOTT, SIOR**  
Senior Vice President  
O 904.345.2099  
M 904.699.3518

Mark.Scott@foundrycommercial.com  
Licensed Real Estate Brokers

**BRAD R. CHRISCHILLES**

Principal

904.345.2020

Brad.Chrischilles@foundrycommercial.com

Licensed Real Estate Brokers

Although the information contained herein was provided by sources believed to be reliable, Foundry Commercial makes no representation, expressed or implied, as to its accuracy and said information is subject to errors, omissions or changes.

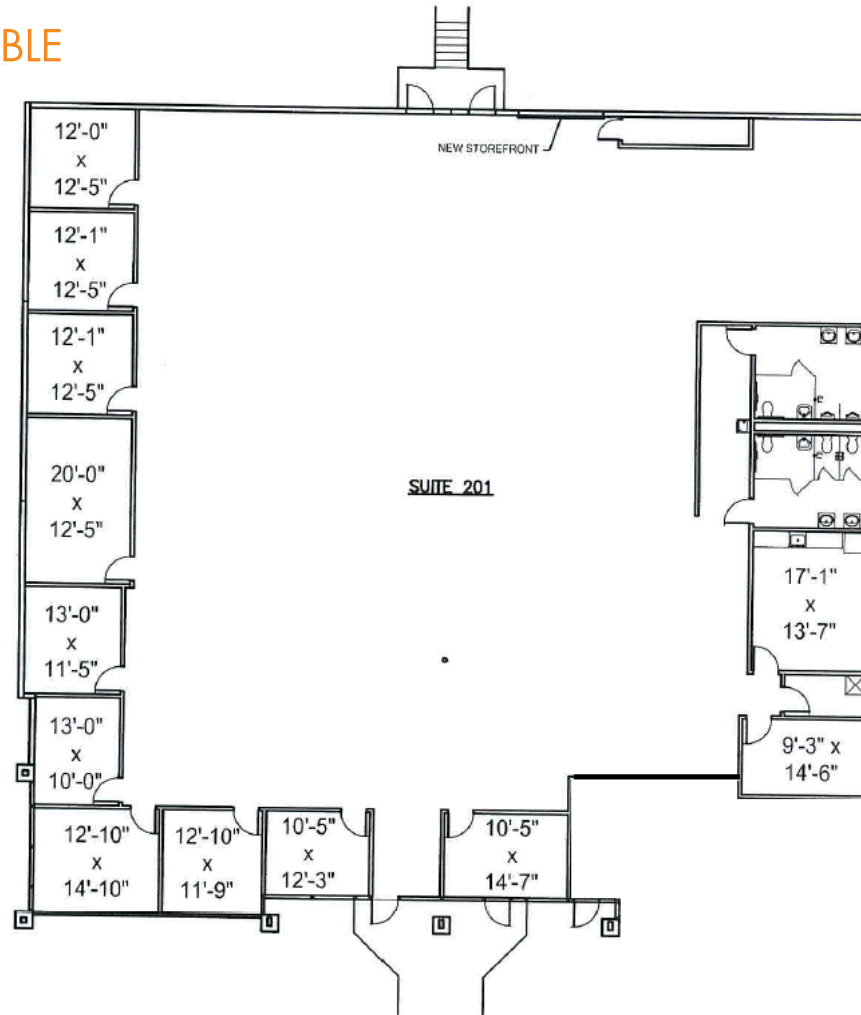
**FOUNDRY**  
COMMERCIAL

6440 Southpoint Parkway, Suite #100  
Jacksonville, FL 32216

[foundrycommercial.com](http://foundrycommercial.com)

CYPRESS POINT BUSINESS PARK  
OFFICE SPACE FOR LEASE

8120 NATIONS WAY – 9,208 SF AVAILABLE  
BUILDING 200  
SUITE 201



For more information, please contact:

**MARK SCOTT, SIOR**

Senior Vice President

O 904.345.2099

M 904.699.3518

Mark.Scott@foundrycommercial.com

Licensed Real Estate Brokers

**BRAD R. CHRISCHILLES**

Principal

904.345.2020

Brad.Chrischilles@foundrycommercial.com

Licensed Real Estate Brokers

Although the information contained herein was provided by sources believed to be reliable, Foundry Commercial makes no representation, expressed or implied, as to its accuracy and said information is subject to errors, omissions or changes.

**FOUNDRY**  
COMMERCIAL

6440 Southpoint Parkway, Suite #100  
Jacksonville, FL 32216

[foundrycommercial.com](http://foundrycommercial.com)

# CYPRESS POINT BUSINESS PARK

## OFFICE SPACE FOR LEASE

### MAP LOCATION



For more information, please contact:

**MARK SCOTT, SIOR**

Senior Vice President

O 904.345.2099

M 904.699.3518

Mark.Scott@foundrycommercial.com

Licensed Real Estate Brokers

**BRAD R. CHRISCHILLES**

Principal

904.345.2020

Brad.Chrischilles@foundrycommercial.com

Licensed Real Estate Brokers

Although the information contained herein was provided by sources believed to be reliable, Foundry Commercial makes no representation, expressed or implied, as to its accuracy and said information is subject to errors, omissions or changes.

**FOUNDRY**  
COMMERCIAL

6440 Southpoint Parkway, Suite #100  
Jacksonville, FL 32216

[foundrycommercial.com](http://foundrycommercial.com)