



# FOR LEASE

## Medical View Plaza

1408 3RD ST SE | Puallup, WA

**CLASS A** medical office space  
adjacent to the Multicare Good  
Samaritan Campus



**Kidder  
Mathews**

FOR LEASE

# Medical View Plaza

1408 3RD ST SE | PUYALLUP, WA



## Class "A" Medical Office Space

**SUITE 100** | 3,511 SF Available

**\$31.00 PSF**, per year, NNN

**READY TO GO** medical clinic build out

**SYNERGY** join one of the strongest medical hubs in the Puget Sound

**ADJACENT** to Multicare Good Samaritan Hospital Campus with quick access to SR 512 and South Meridian

**MULTICARE GOOD SAMARITAN HOSPITAL**, established in 1952, Good Samaritan offers Pierce and King County Residents convenient access to hundreds of care providers, the latest diagnostic and treatment technologies plus a 24 hour emergency department

**WILL FRAME**  
253.722.1412  
will.frame@kidder.com

**DREW FRAME**  
253.722.1433  
drew.frame@kidder.com

KIDDER.COM

This information supplied herein is from sources we deem reliable. It is provided without any representation, warranty, or guarantee, expressed or implied as to its accuracy. Prospective Buyer or Tenant should conduct an independent investigation and verification of all matters deemed to be material, including, but not limited to, statements of income and expenses. Consult your attorney, accountant, or other professional advisor.



FOR LEASE

# Medical View Plaza

1408 3RD ST SE | PUYALLUP, WA



KIDDER.COM

This information supplied herein is from sources we deem reliable. It is provided without any representation, warranty, or guarantee, expressed or implied as to its accuracy. Prospective Buyer or Tenant should conduct an independent investigation and verification of all matters deemed to be material, including, but not limited to, statements of income and expenses. Consult your attorney, accountant, or other professional advisor.

**km** Kidder Mathews

**FOR LEASE**

# Medical View Plaza

1408 3RD ST SE | PUYALLUP, WA



[KIDDER.COM](http://KIDDER.COM)

This information supplied herein is from sources we deem reliable. It is provided without any representation, warranty, or guarantee, expressed or implied as to its accuracy. Prospective Buyer or Tenant should conduct an independent investigation and verification of all matters deemed to be material, including, but not limited to, statements of income and expenses. Consult your attorney, accountant, or other professional advisor.

**km** Kidder Mathews

FOR LEASE

# Medical View Plaza

1408 3RD ST SE | PUYALLUP, WA



[KIDDER.COM](http://KIDDER.COM)

This information supplied herein is from sources we deem reliable. It is provided without any representation, warranty, or guarantee, expressed or implied as to its accuracy. Prospective Buyer or Tenant should conduct an independent investigation and verification of all matters deemed to be material, including, but not limited to, statements of income and expenses. Consult your attorney, accountant, or other professional advisor.

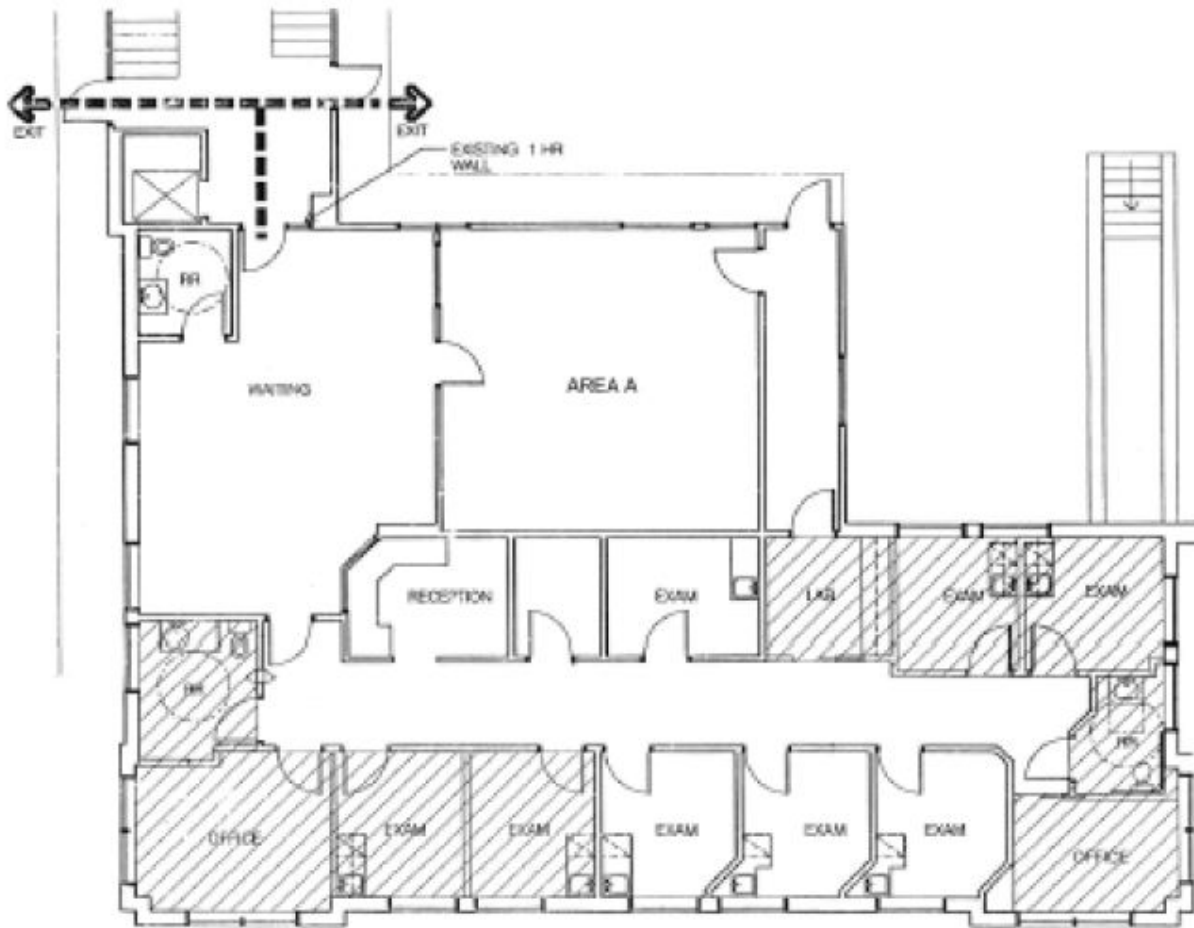
 **Kidder  
Mathews**

**FOR LEASE**

# Medical View Plaza

1408 3RD ST SE | PUYALLUP, WA

## Suite 100



**WILL FRAME**  
253.722.1412  
[will.frame@kidder.com](mailto:will.frame@kidder.com)

**DREW FRAME**  
253.722.1433  
[drew.frame@kidder.com](mailto:drew.frame@kidder.com)

[KIDDER.COM](http://KIDDER.COM)

This information supplied herein is from sources we deem reliable. It is provided without any representation, warranty, or guarantee, expressed or implied as to its accuracy. Prospective Buyer or Tenant should conduct an independent investigation and verification of all matters deemed to be material, including, but not limited to, statements of income and expenses. Consult your attorney, accountant, or other professional advisor.

