



Target Outparcel For Sale

- Total project size of 250,000 SF
- 127,000 SF Target
- 2 acres available

2017 DEMOGRAPHICS	3 MILE	5 MILE	7 MILE
Population	36,870	129,140	162,491
Med HH Income	\$55,134	\$46,308	\$50,978

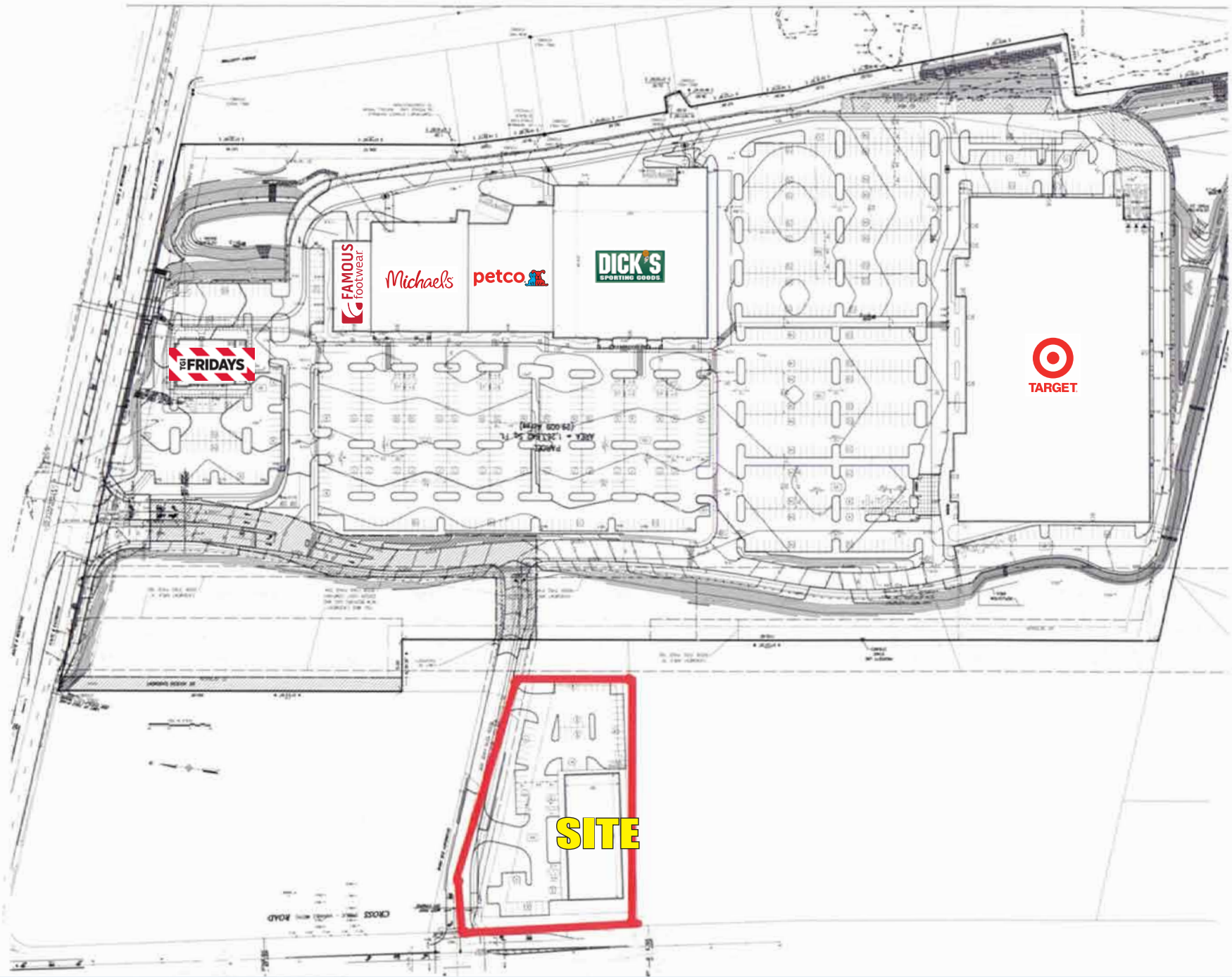


Brian Roache

617.239.3638
broache@atlanticretail.com

Sam Koonce

617.239.3608
skoonce@atlanticretail.com



NORTH DARTMOUTH, MA
Dartmouth Commons

OVERALL SITE PLAN

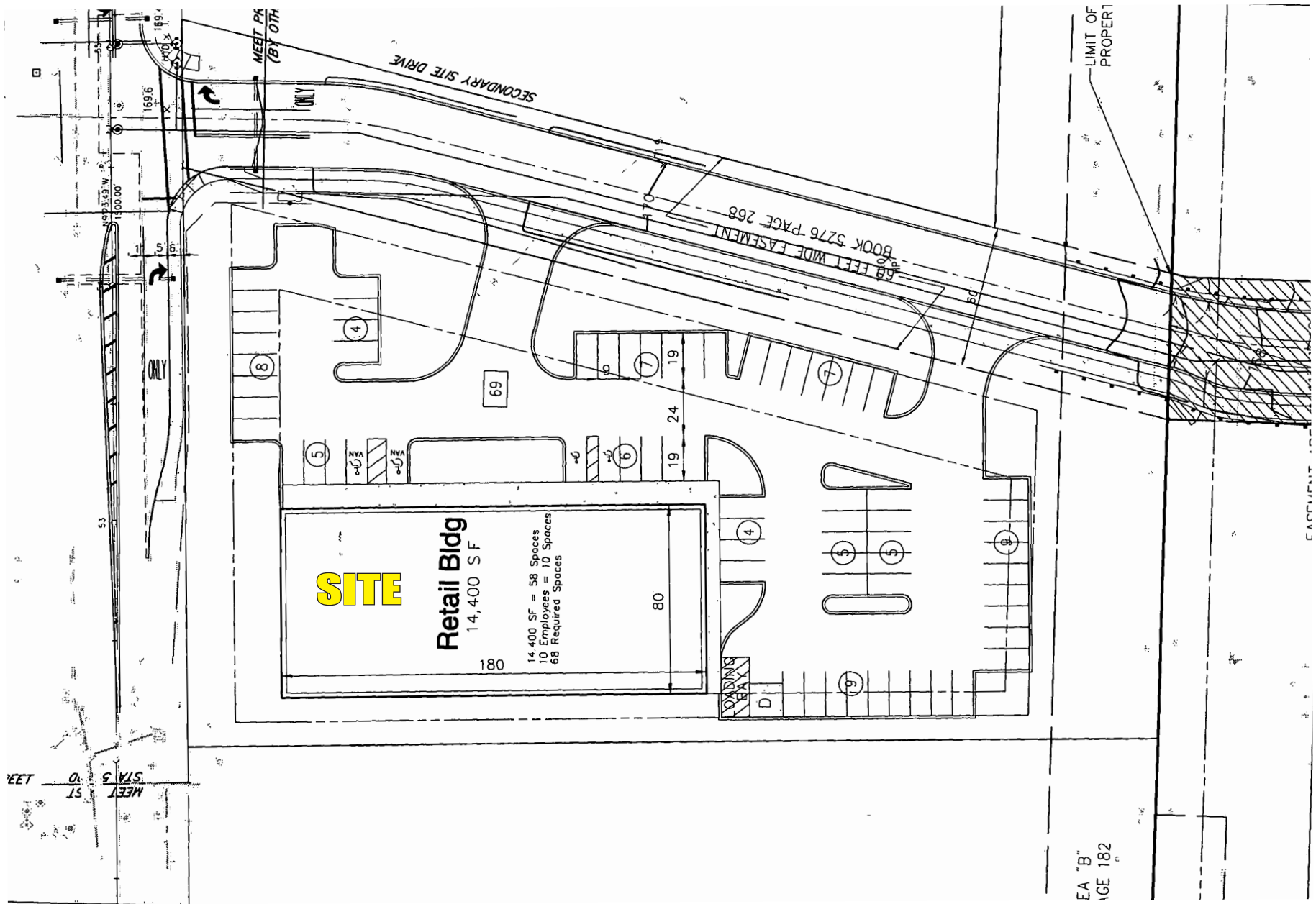
Brian Roache

617.239.3638
 broache@atlanticretail.com

Sam Koonce

617.239.3608
 skoonce@atlanticretail.com

ATLANTICRETAIL.COM



SITE

Retail Bldg
14,400 SF

14,400 SF = 58 Spaces
10 Employees = 10 Spaces
68 Required Spaces

EA "B"
AGE 182



NORTH DARTMOUTH, MA

Dartmouth Commons

DETAIL SITE PLAN

Brian Roache

617.239.3638
broache@atlanticretail.com

Sam Koonce

617.239.3608
skoonce@atlanticretail.com

ATLANTICRETAIL.COM



195

L A  B O Y

KOHL'S
Christmas Tree Shops

BARNES & NOBLE
TJ-maxx BED BATH & BEYOND
JOANN Office DEPOT

THE HOME DEPOT
BJS

AC MOORE
ARTS & CRAFTS

Walmart

Pier 1 imports

LOWE'S

BEST BUY
Stop & Shop

6

SITE

DICK'S SPORTING GOODS
Michael's
petco
TARGET FAMOUS footwear

NORTH DARTMOUTH MALL
amc JCPenney **macy's**
OLD NAVY **sears**

UMass
Dartmouth



NORTH DARTMOUTH, MA
Dartmouth Commons

Brian Roache
617.239.3638
broache@atlanticretail.com

Sam Koonce
617.239.3608
skoonce@atlanticretail.com