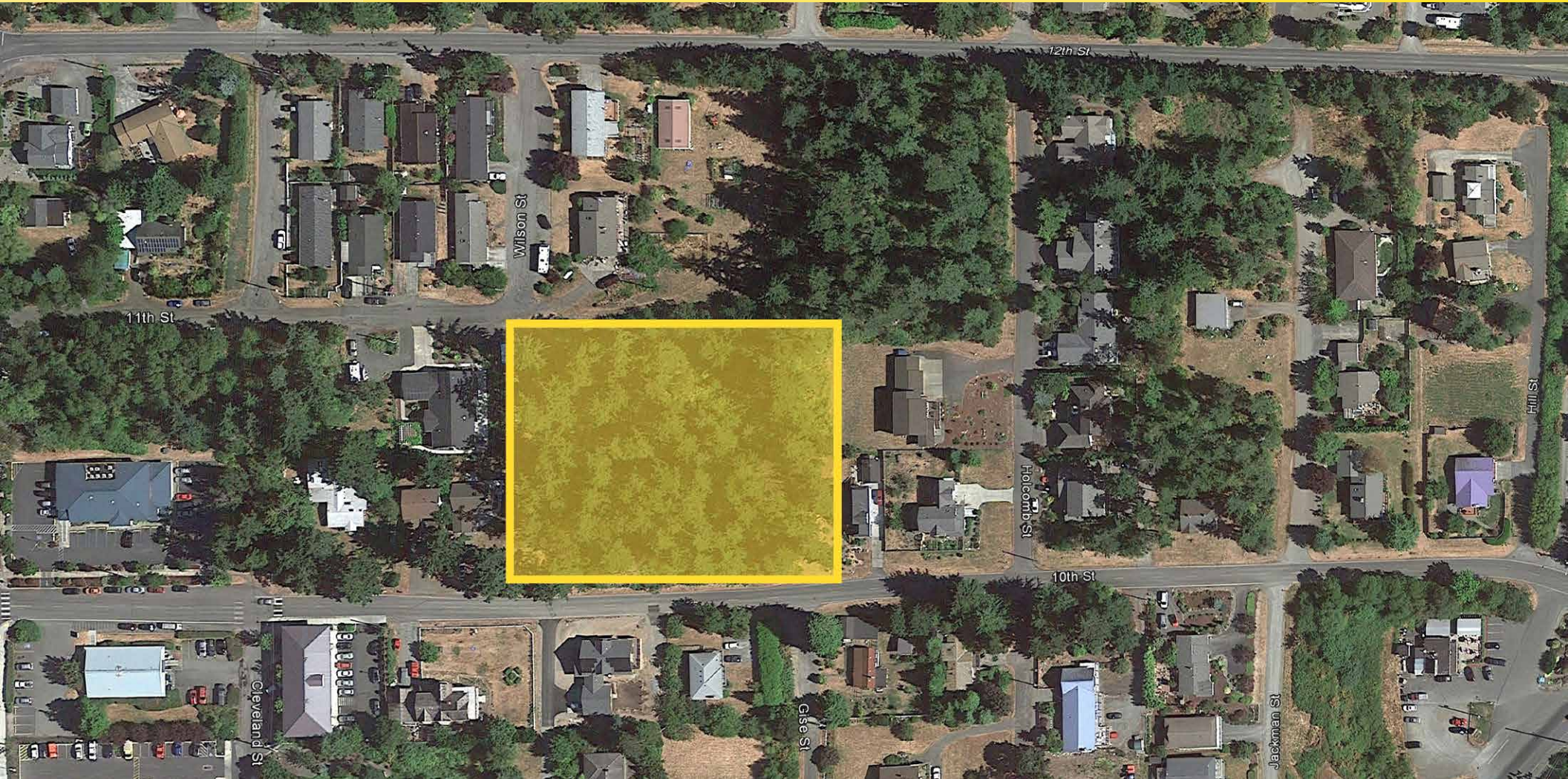




PORT TOWNSEND SUBDIVISION

10th Street and Gise Street, Port Townsend, WA 98368

FOR
SALE



CARRIE WALKER

(253) 284-3644

carrie@firstwesternproperties.com

First Western Properties - Tacoma, Inc.

6402 Tacoma Mall Blvd, Tacoma, WA 98409

© First Western Properties - Tacoma, Inc. DISCLAIMER: The above information has been secured from sources believed to be reliable, however, no representations are made to its accuracy. Prospective tenants or buyers should consult their professional advisors and conduct their own independent investigation. Properties are subject to change in price and/or availability without notice.

www.fwp-inc.com

PORT TOWNSEND SUBDIVISION

10th Street and Gise Street, Port Townsend, WA 98368

FOR
SALE

LOCATION DETAILS

- Miles away from the Olympic National Park
- Located minutes from the Historical downtown Port Townsend and Fort Worden State Park
- Minutes from grocery stores and restaurants

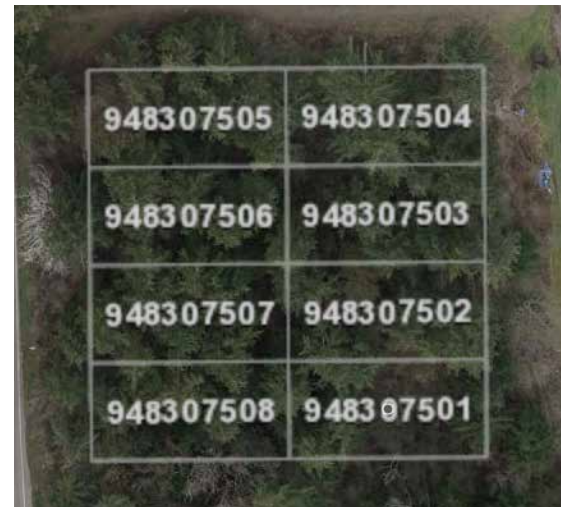


AVAILABLE

- \$525,000
- Just shy of one acre residential subdivision
- 8 Individual parcels (must be sold together)

PROPERTY DESCRIPTION

- Zoned R-11 (SF)
- Ocean views from the property
- Developable land on city utilities



NEARBY



Jefferson
Healthcare



First Western Properties - Tacoma, Inc.

6402 Tacoma Mall Blvd, Tacoma, WA 98409

P (253) 472-0404 F (253) 472-0541

www.fwp-inc.com

PORT TOWNSEND SUBDIVISION

10th Street and Gise Street, Port Townsend, WA 98368

FOR
SALE



First Western Properties - Tacoma, Inc.

6402 Tacoma Mall Blvd, Tacoma, WA 98409

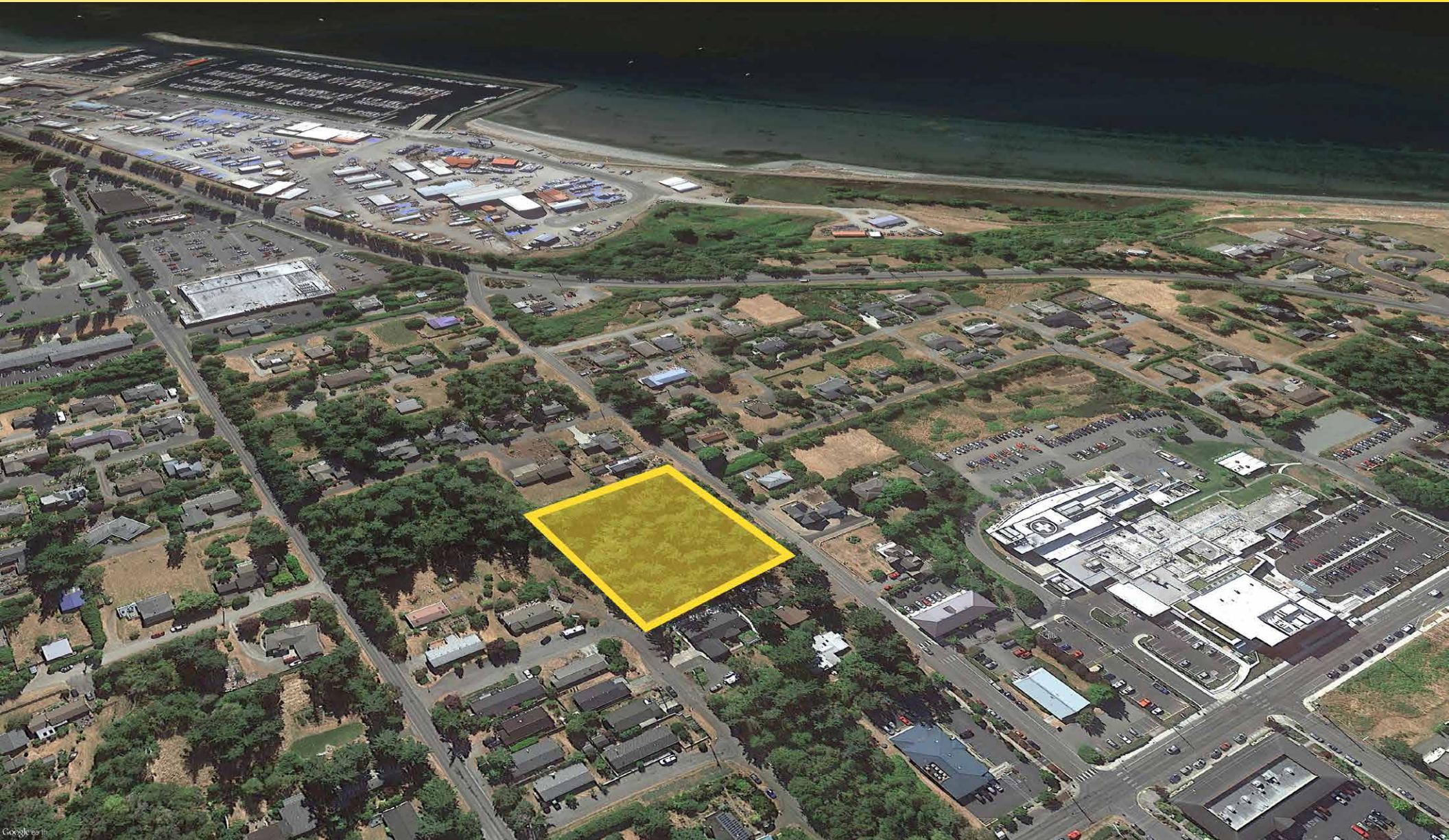
P (253) 472-0404 F (253) 472-0541

www.fwp-inc.com

PORT TOWNSEND SUBDIVISION

10th Street and Gise Street, Port Townsend, WA 98368

FOR
SALE



First Western Properties - Tacoma, Inc.
6402 Tacoma Mall Blvd, Tacoma, WA 98409
P (253) 472-0404 F (253) 472-0541

www.fwp-inc.com