

RETAIL-FOR-LEASE



SUITE 450



SUITE 600



# SEGALE RETAIL CENTER

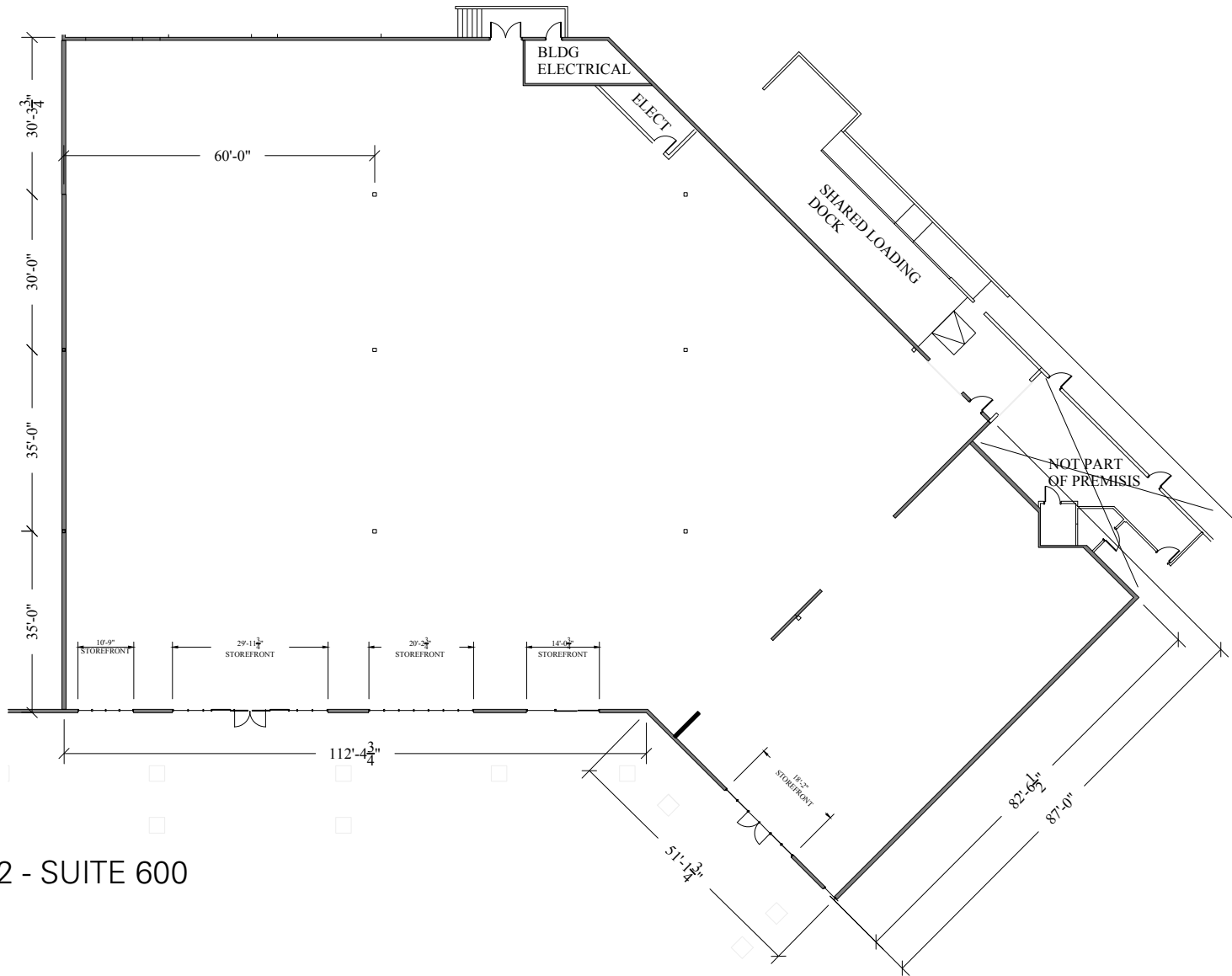
300 Andover Park West, Tukwila, WA 98188

JOHN CHELICO  
206.859.4500 | [johnc@jshproperties.com](mailto:johnc@jshproperties.com)  
[jshproperties.com](http://jshproperties.com)  
JSH | PROPERTIES, INC.



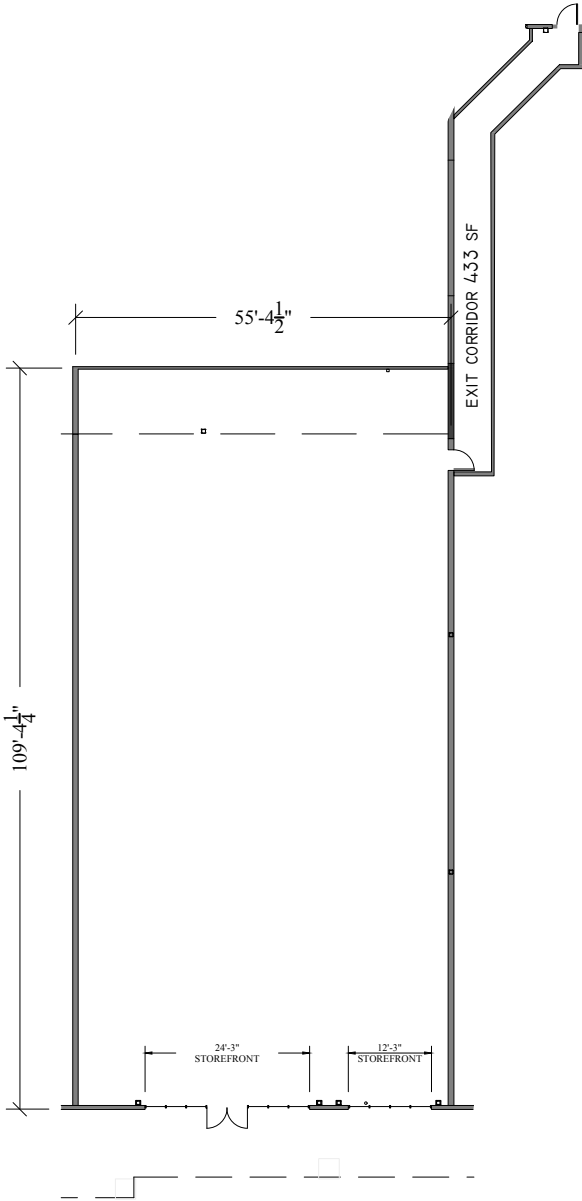
**SEGALE  
RETAIL CENTER**

**TWO SPACES AVAILABLE**  
Suite 600 - 22,417 SF  
Suite 450 - 6,055 SF

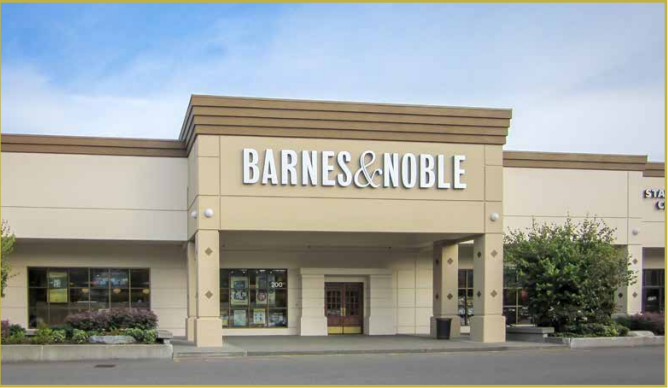


BUILDING 932 - SUITE 600  
22,417 SF

BUILDING 932 - SUITE 450  
6,055 SF



SEGALE RETAIL CENTER SITE MAP



Segale Retail Center is a bustling retail center in Tukwila, Washington.

Tukwila is a retail powerhouse. Anchored by Westfield Southcenter, which is the largest mall in the Pacific Northwest, Tukwila generated nearly \$1.9 billion dollars in taxable retail sales in 2014. It is also home to hundreds of small businesses, many of which are owned by members of Tukwila's diverse international community.

Tukwila is a great place for business. With over 40,000 jobs, more people are employed in the City of Tukwila than in 29 counties in the State of Washington. Located near SeaTac International Airport and just south of Seattle.

Many well-known companies, such as Boeing, Costco, and Group Health employ thousands of people in Tukwila. Further, Tukwila is home to the global headquarters of BECU, Continental Mills, Odin Brewing Company, Pop Gourmet Foods, Red Dot Corporation, Sabey Corporation, and Seattle Chocolates.

Source: City of Tukwila

Demographics source: U.S. Census Bureau

