

Office/Medical For Lease

Kearny Office Park

8322, 8328, 8344 Clairemont Mesa Boulevard,
San Diego, CA 92111

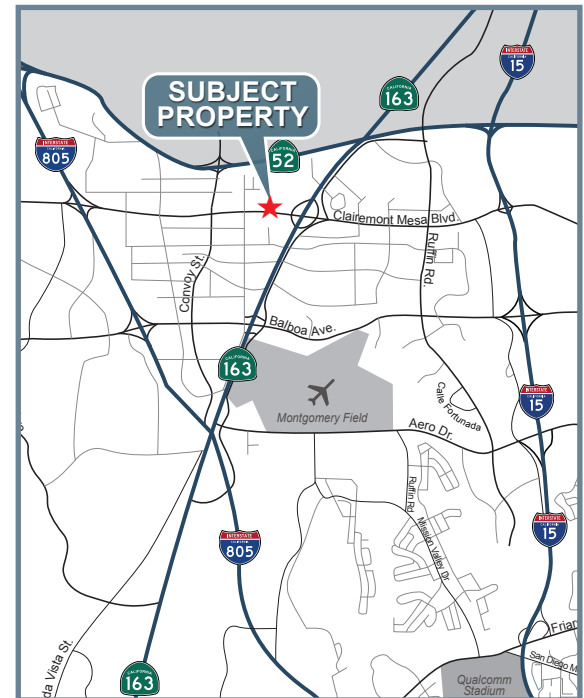


Lease Rate & Availability

- 8322 Clairemont Mesa Boulevard, Suite 204: ±2,499 RSF
\$1.55 Full Service Gross PSF/Mo
- 8328 Clairemont Mesa Boulevard, Suite 210: ±2,226 RSF
\$1.55 Full Service Gross PSF/Mo
- Medical Lease Rate: Negotiable

Property Highlights

- Campus style environment
- Great access to freeways
- Parking ratio: ±5/1,000 per rentable square feet
- Electric and 5 days per week janitorial included in rental rate for Suites 204 & 210
- Fiber ready buildings - up to 1,024 Mbps
- New seating areas and free WI-FI in all common areas



BRANDON KEITH
Senior Vice President
858.458.3326
bkeith@voitco.com
Lic #01177792

RYAN BRACKER
Senior Associate
858.458.3355
rbracker@voitco.com
Lic #01353870

4747 Executive Dr., Suite 800, San Diego, CA 92121
858.453.0505 | 858.408.3976 Fax | Lic #01333376 | www.voitco.com

Voit

REAL ESTATE SERVICES

Real People. Real Solutions.®

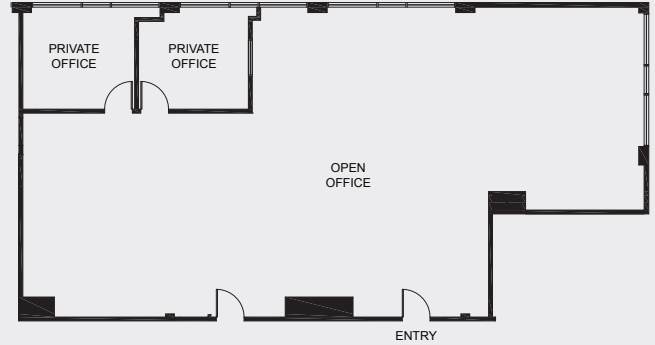
Office/Medical For Lease

Kearny Office Park

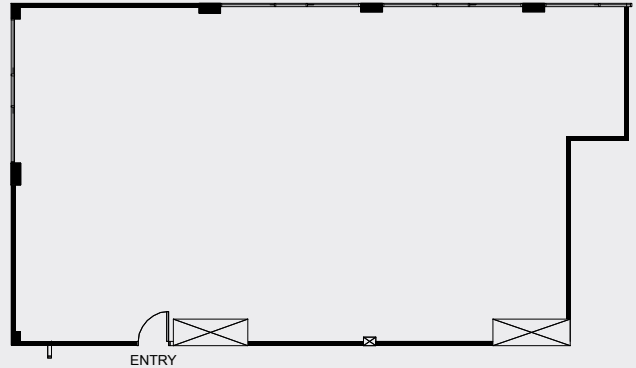
8322, 8328, 8344 Clairemont Mesa Boulevard,
San Diego, CA 92111



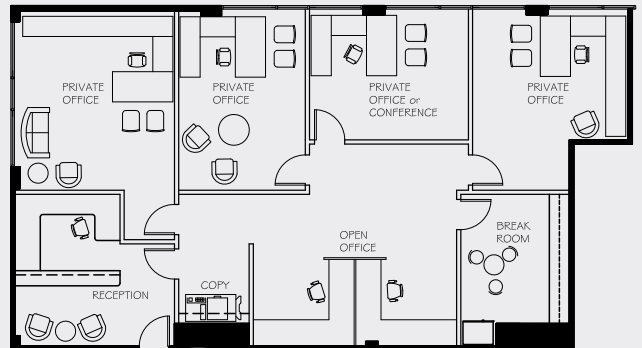
8322 Clairemont Mesa Boulevard Suite 204: ±2,499 RSF



8328 Clairemont Mesa Boulevard Suite 210: ±2,226 RSF



8328 Clairemont Mesa Boulevard, Suite 210 Proposed Spec Plan



BRANDON KEITH
Senior Vice President
858.458.3326
bkeith@voitco.com
Lic #01177792

RYAN BRACKER
Senior Associate
858.458.3355
rbracker@voitco.com
Lic #01353870

4747 Executive Dr., Suite 800, San Diego, CA 92121
858.453.0505 | 858.408.3976 Fax | Lic #01333376 | www.voitco.com

Licensed as a Real Estate Broker and Salesperson by the CA Bar of Real Estate. The information contained herein has been obtained from sources we deem reliable. While we have no reason to doubt its accuracy, we do not guarantee it. ©2014 Voit Real Estate Services, Inc. All Rights Reserved. Real People. Real Solutions.® is a registered trademark of Voit Real Estate Services.

CORFAC
International

Voit

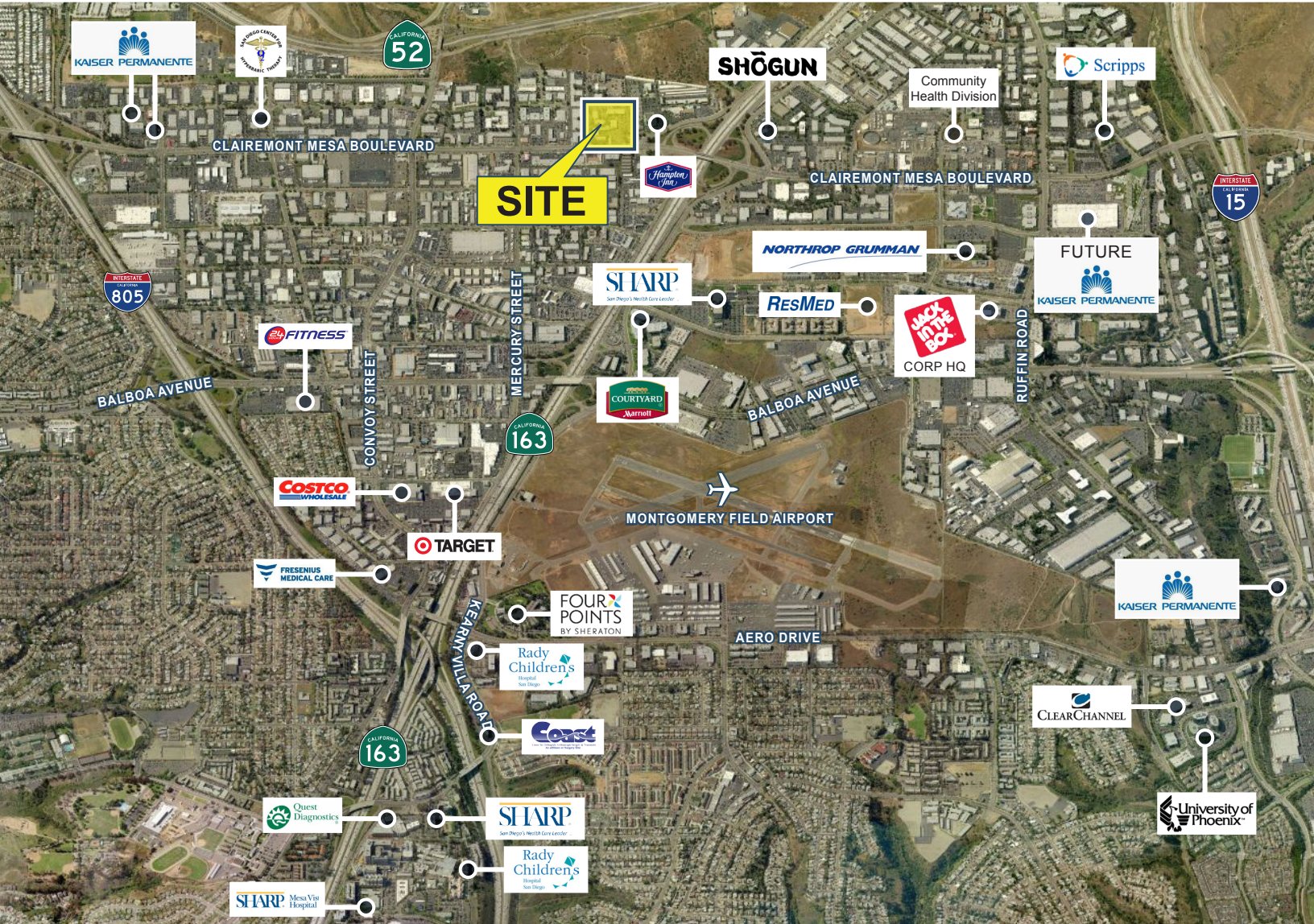
REAL ESTATE SERVICES

Real People. Real Solutions.®

Office/Medical For Lease

Kearny Office Park

8322, 8328, 8344 Clairemont Mesa Boulevard,
San Diego, CA 92111



BRANDON KEITH
Senior Vice President
858.458.3326
bkeith@voitco.com
Lic #01177792

RYAN BRACKER
Senior Associate
858.458.3355
rbracker@voitco.com
Lic #01353870

4747 Executive Dr., Suite 800, San Diego, CA 92121
858.453.0505 | 858.408.3976 Fax | Lic #01333376 | www.voitco.com

Licensed as a Real Estate Broker and Salesperson by the CA Bar of Real Estate. The information contained herein has been obtained from sources we deem reliable. While we have no reason to doubt its accuracy, we do not guarantee it. ©2014 Voit Real Estate Services, Inc. All Rights Reserved. Real People. Real Solutions.® is a registered trademark of Voit Real Estate Services.

CORFAC
International

Voit

REAL ESTATE SERVICES

Real People. Real Solutions.®