

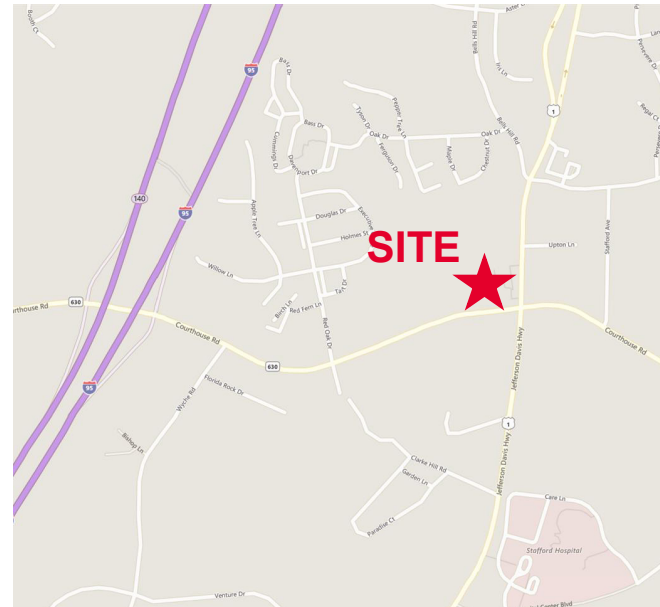


**Property Features**

- Two office suites available with bathroom and kitchen
- Includes water, sewer, trash; you pay electric and telecommunications
- A/C and heat in individual units
- Located right across the road from the Stafford County Courthouse
- Zoned B-2

**Specifications**

Available SF	Suite 100 – 800 SF Suite 101 – 600 SF
Timing	Available immediately
Rental Rate	Suite 100 - \$1,750 /month + utilities Suite 101 - \$1,295 /month + utilities

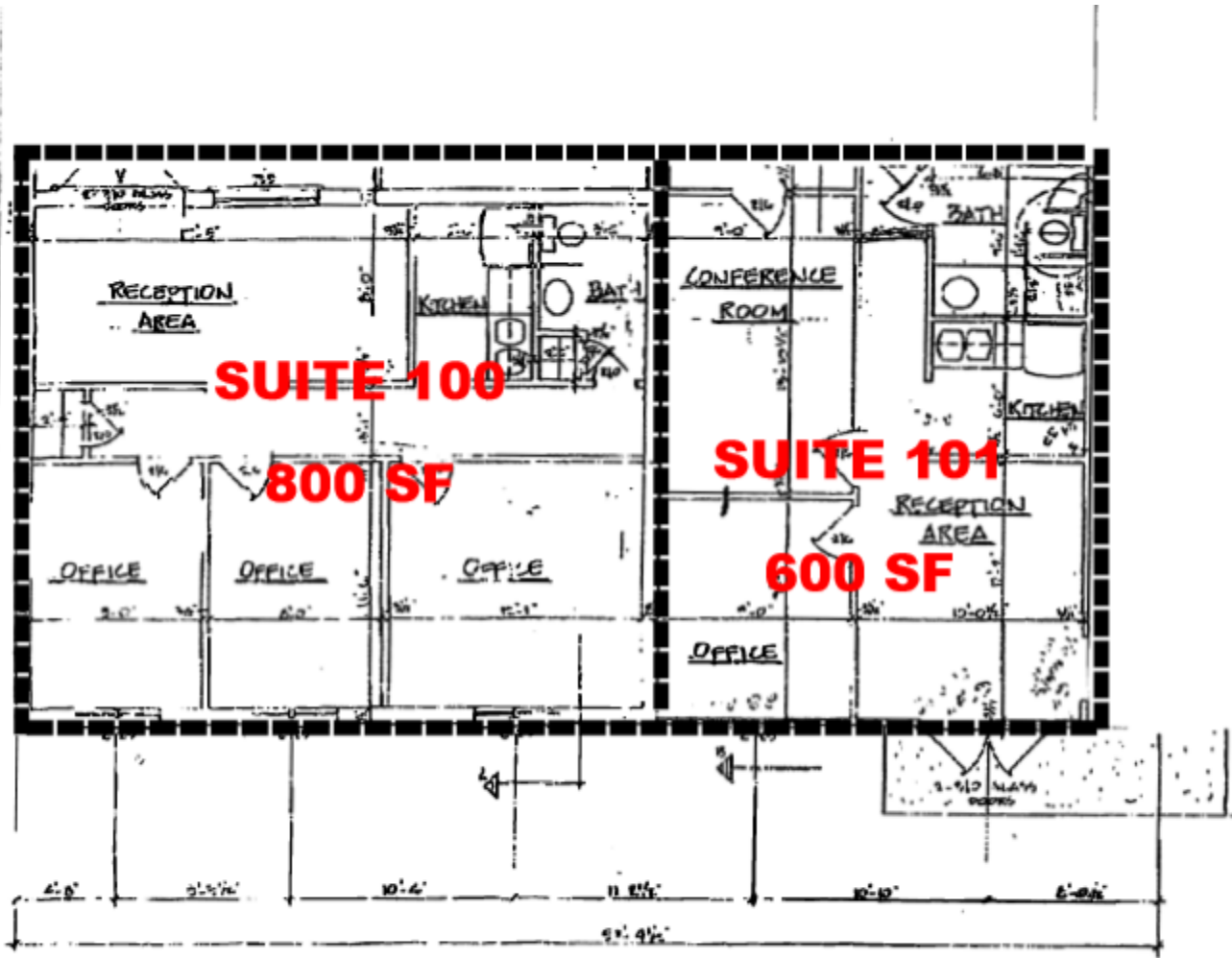


For more information, contact:

**VIRGIL NELSON, CCIM**  
 Senior Vice President  
 540 322 4150  
 virgil.nelson@thalhimer.com

Eagle Village  
 1125 Jefferson Davis Highway, Suite 350  
 Fredericksburg, VA 22401-8449  
 www.thalhimer.com

FLOOR PLANS



**1267 COURTHOUSE RD.**  
**SPACES CAN BE COMBINED**

For more information, contact:

**VIRGIL NELSON, CCIM**  
Senior Vice President  
540 322 4150  
[virgil.nelson@thalhimer.com](mailto:virgil.nelson@thalhimer.com)

Eagle Village  
1125 Jefferson Davis Highway, Suite 350  
Fredericksburg, VA 22401-8449  
[www.thalhimer.com](http://www.thalhimer.com)



For more information, contact:

**VIRGIL NELSON, CCIM**  
 Senior Vice President  
 540 322 4150  
[virgil.nelson@thalhimer.com](mailto:virgil.nelson@thalhimer.com)

Eagle Village  
 1125 Jefferson Davis Highway, Suite 350  
 Fredericksburg, VA 22401-8449  
[www.thalhimer.com](http://www.thalhimer.com)