

Commercial Land
For Lease

6.37 Acres MOL

Lease Price:
\$8,094/Month



2030 E. Memorial Road

Oklahoma City, Oklahoma 73134

PROPERTY HIGHLIGHTS

- 6.37 Acres MOL, Zoned C-3
- Next to Oklahoma Christian University
- All Utilities to Site



www.naisullivangroup.com

Bob Sullivan, CCIM

Cell: 1 405 641 9798

rsullivan@ccim.net

4045 N.W. 64th Street, Suite 340

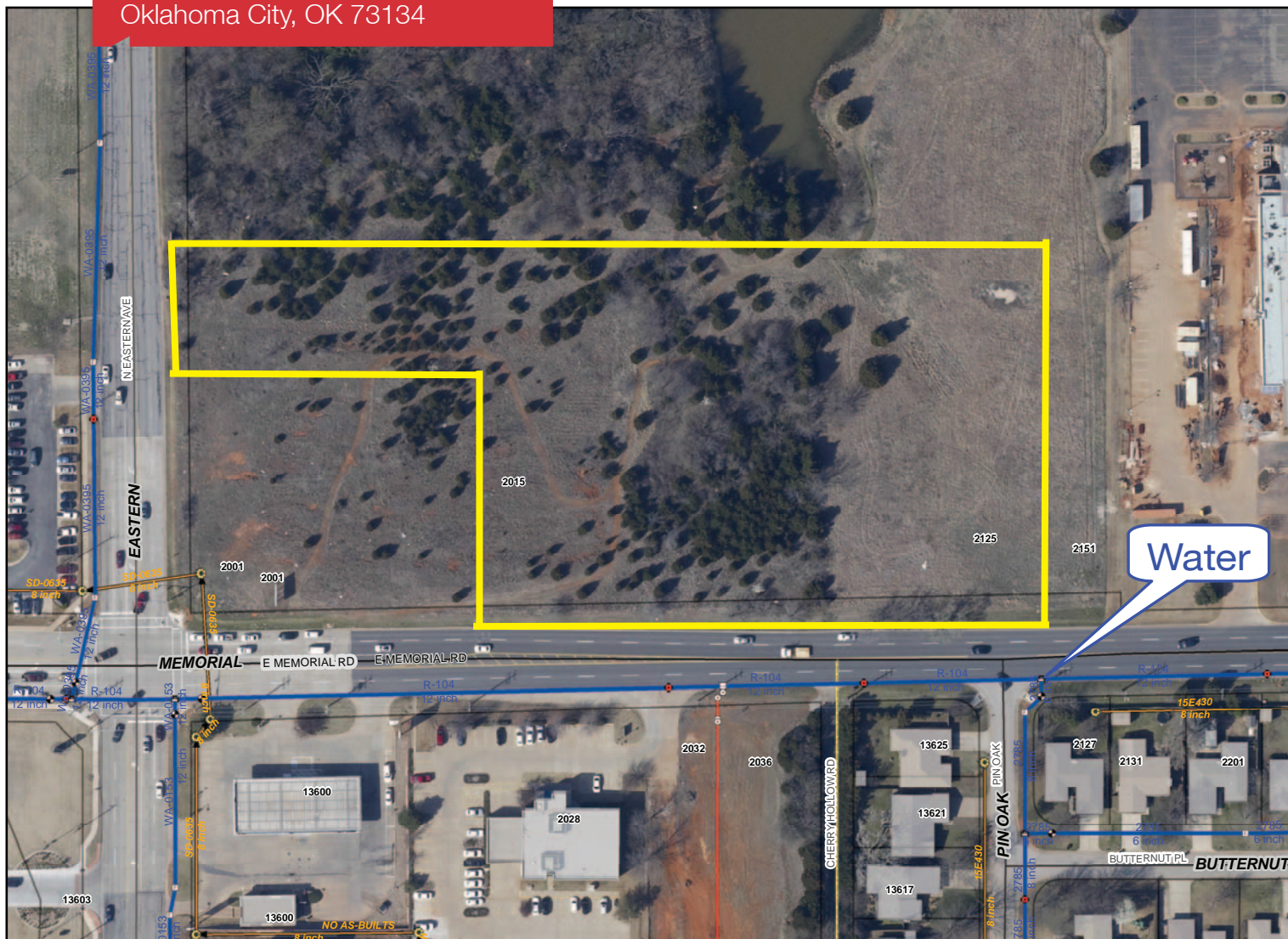
Oklahoma City, Oklahoma 73116

Office: 1 405 840 0600

Fax: 1 405 840 0610

NO WARRANTY OR REPRESENTATION, EXPRESS OR IMPLIED, IS MADE AS TO THE ACCURACY OF THE INFORMATION CONTAINED HEREIN, AND THE SAME IS SUBMITTED SUBJECT TO ERRORS, OMISSIONS, CHANGE OF PRICE, RENTAL OR OTHER CONDITIONS, PRIOR SALE, LEASE OR FINANCING, OR WITHDRAWAL WITHOUT NOTICE, AND OF ANY SPECIAL LISTING CONDITIONS IMPOSED BY OUR PRINCIPALS NO WARRANTIES OR REPRESENTATIONS ARE MADE AS TO THE CONDITION OF THE PROPERTY OR ANY HAZARDS CONTAINED THEREIN ARE ANY TO BE IMPLIED.

2030 E. Memorial Road
Oklahoma City, OK 73134



DEMOGRAPHICS

Population		
1 Mile: 8,744	3 Mile: 45,734	5 Mile: 145,557
Average Household Income		
1 Mile: \$58,788	3 Mile: \$67,393	5 Mile: \$62,469
Total Households		
1 Mile: 3,732	3 Mile: 18,539	5 Mile: 59,610

LOCATION HIGHLIGHTS

- Across from OnCue
- 1/2 Mile from the Kilpatrick Turnpike

Bob Sullivan, CCIM

Cell: 1 405 641 9798
rsullivan@ccim.net

www.naisullivangroup.com

4045 N.W. 64th Street, Suite 340
Oklahoma City, Oklahoma 73116
Office: 1 405 840 0600
Fax: 1 405 840 0610

NAI Sullivan Group