

550 S. WINCHESTER BLVD

Premiere Class A Office Building



CUSHMAN &
WAKEFIELD

the **Muller**
company

PROPERTY HIGHLIGHTS

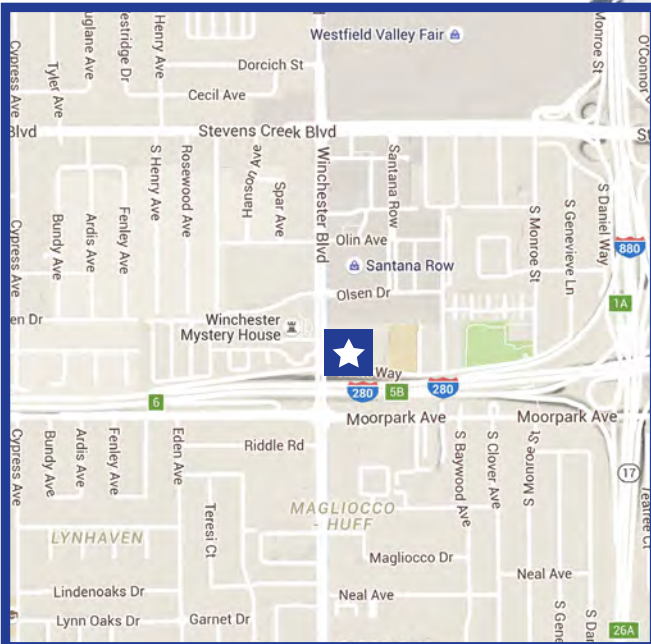
- 103,622 Square Foot Class A Office building at the entrance to Santana Row
- Immediate Access to I-280 and Highway 17/880
- Upgraded Elevator and Cabs
- Walking Distance to Santana Row and Valley Fair
- True work, live and play environment
- 3.75/1,000 Parking with Covered Parking Available
- Call to Tour

AVAILABLE SUITES

SUITE #	SQUARE FOOTAGE	AVAILABILITY
Suite 500	±6,024 SF	Available Now
Suite 110	±7,783 SF	Available Now
Suite 100	±9,765 SF	Available Now
Suite 300	±13,138 SF	Available Now (Divisible)

AVAILABLE DIVISIBLE SUITES

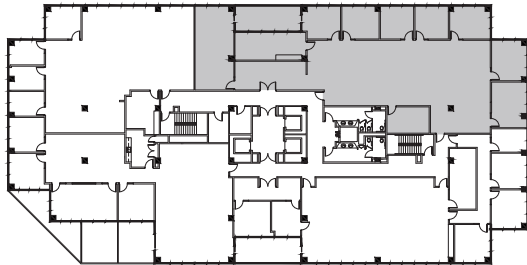
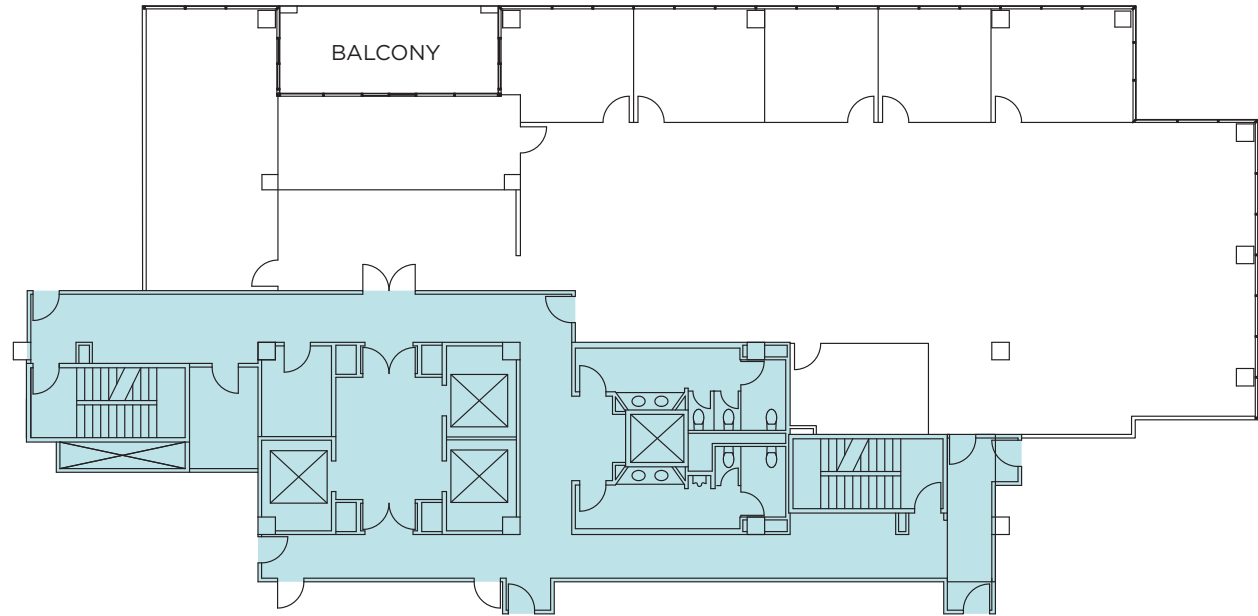
SUITE #	SQUARE FOOTAGE	AVAILABILITY
Suite 310	±3,087 SF	Available in 60 Days
Suite 330	±4,264 SF	Available in 60 Days
Suite 300	±5,474 SF	Available in 60 Days



FLOOR PLAN

- Existing Floorplan
- Suite 500
- ±6,024 SF

COMMON AREA



For more information, contact:

Drew Arvay
Senior Vice President
+1 408 436 3647
drew.arvay@cushwake.com
LIC #00511262

Nick Lazzarini, LEED GA
Managing Director
+1 408 615 3410
nick.lazzarini@cushwake.com
LIC #01788935

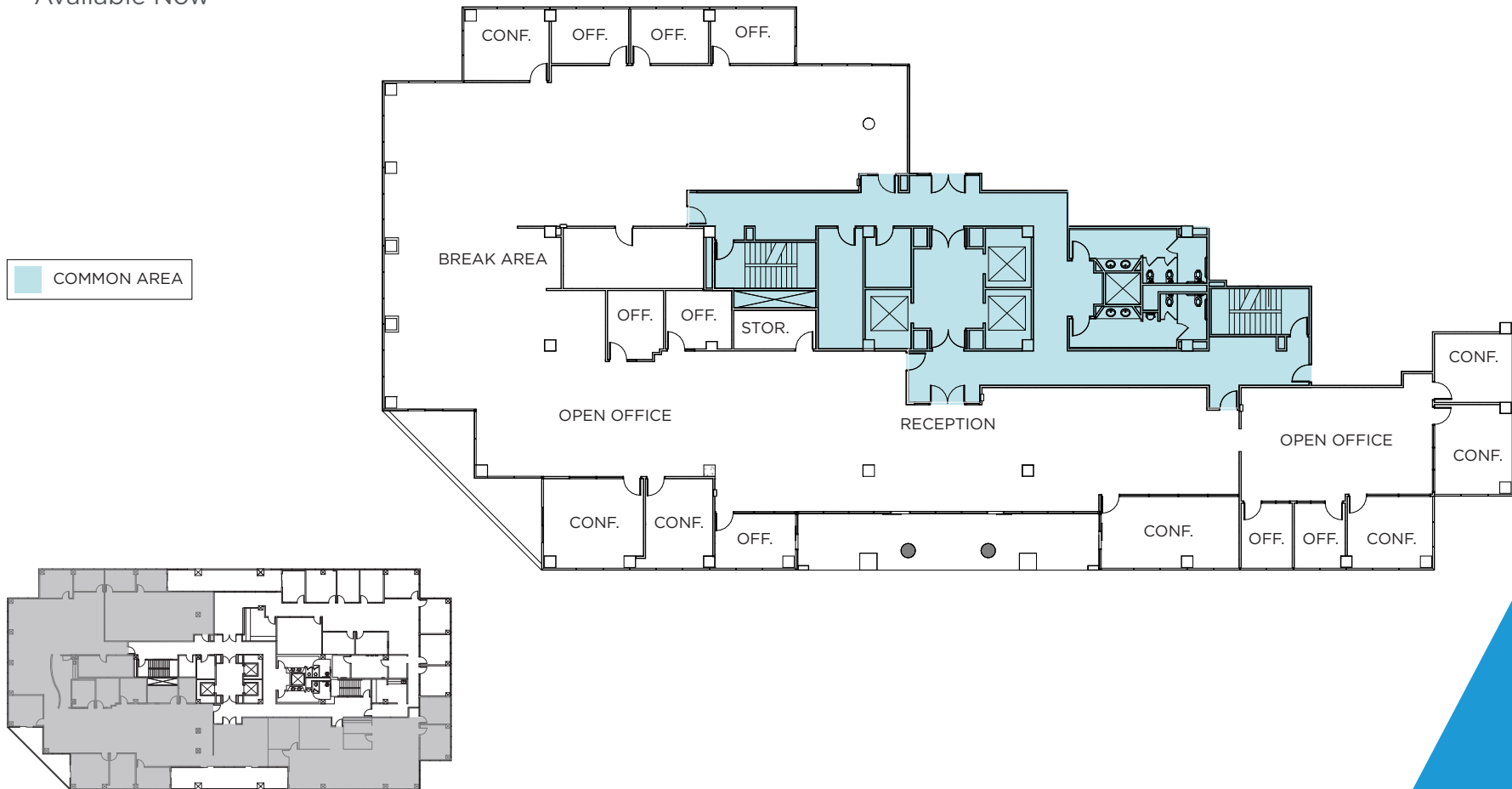
300 Santana Row, Fifth Floor
San Jose, CA 95128
T: +1 408 615 3400
F: +1 408 615 4444
www.cushmanwakefield.com



the **Muller**
company

FLOOR PLAN

- Suite 300
- ±13,138 SF
- Divisible to Multiple Sizes
- Available Now



For more information, contact:

Drew Arvay
Senior Vice President
+1 408 436 3647
drew.arvay@cushwake.com
LIC #00511262

Nick Lazzarini, LEED GA
Managing Director
+1 408 615 3410
nick.lazzarini@cushwake.com
LIC #01788935

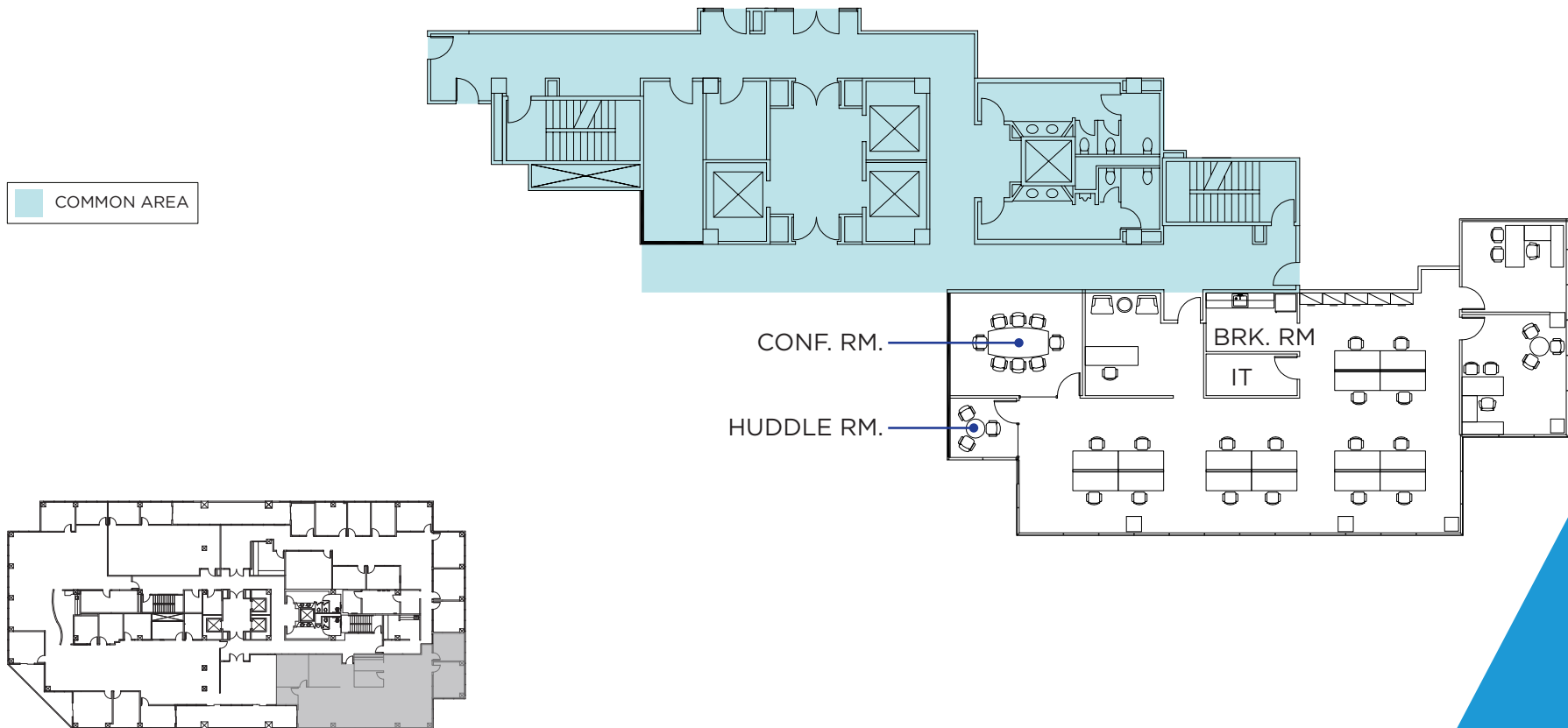
300 Santana Row, Fifth Floor
San Jose, CA 95128
T: +1 408 615 3400
F: +1 408 615 4444
www.cushmanwakefield.com



the **Muller**
company

CONCEPTUAL FLOOR PLAN AND FURNITURE

- Suite 310
- ±3,087 SF
- Available in 60 Days
- Contiguous up to 8,560 SF or 12,824 SF



For more information, contact:

Drew Arvay
Senior Vice President
+1 408 436 3647
drew.arvay@cushwake.com
LIC #00511262

Nick Lazzarini, LEED GA
Managing Director
+1 408 615 3410
nick.lazzarini@cushwake.com
LIC #01788935

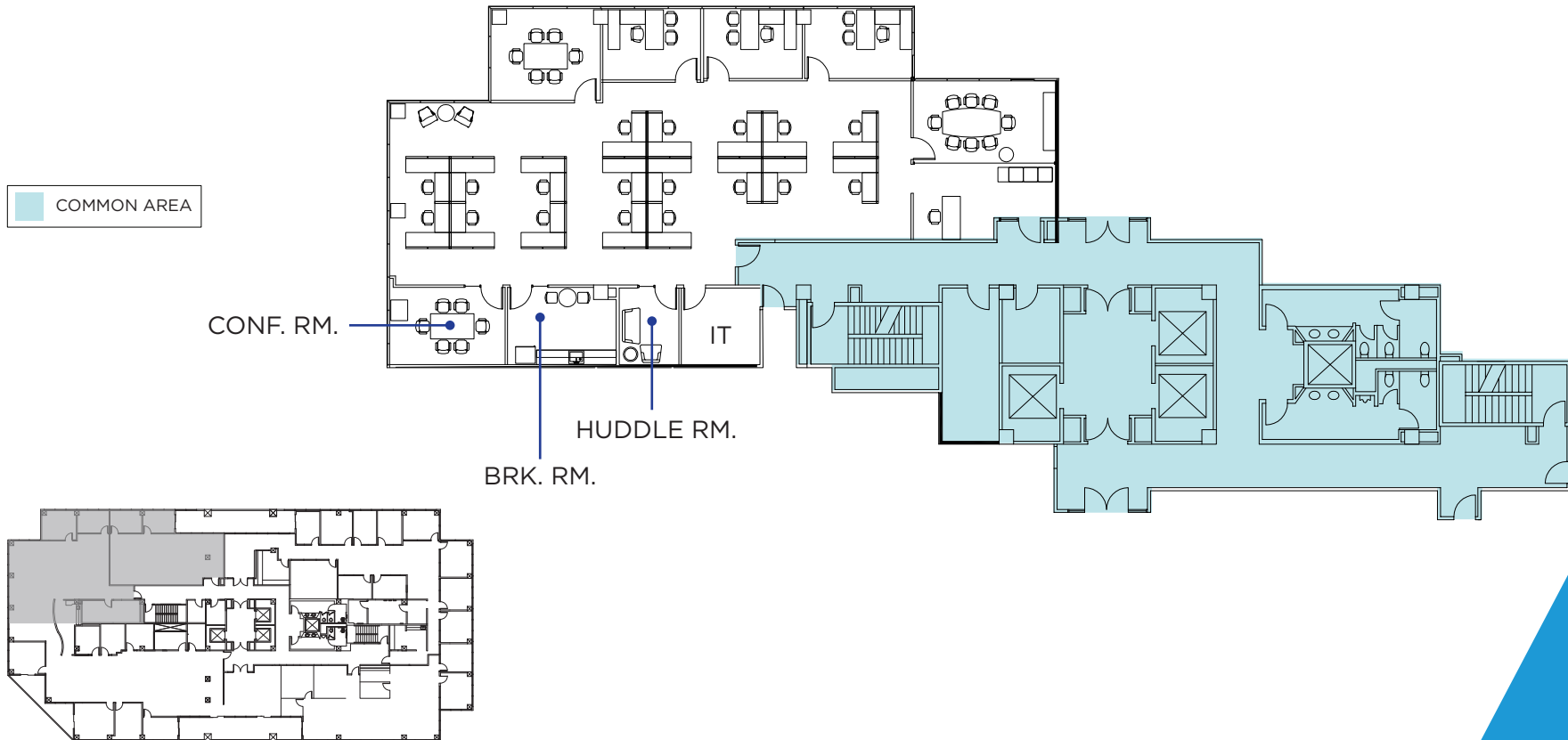
300 Santana Row, Fifth Floor
San Jose, CA 95128
T: +1 408 615 3400
F: +1 408 615 4444
www.cushmanwakefield.com



the **Muller**
company

CONCEPTUAL FLOOR PLAN AND FURNITURE

- Suite 330
- 4,264 SF
- Available in 60 days
- Contiguous up to 9,737 SF & 12,824 SF



For more information, contact:

Drew Arvay
Senior Vice President
+1 408 436 3647
drew.arvay@cushwake.com
LIC #00511262

Nick Lazzarini, LEED GA
Managing Director
+1 408 615 3410
nick.lazzarini@cushwake.com
LIC #01788935

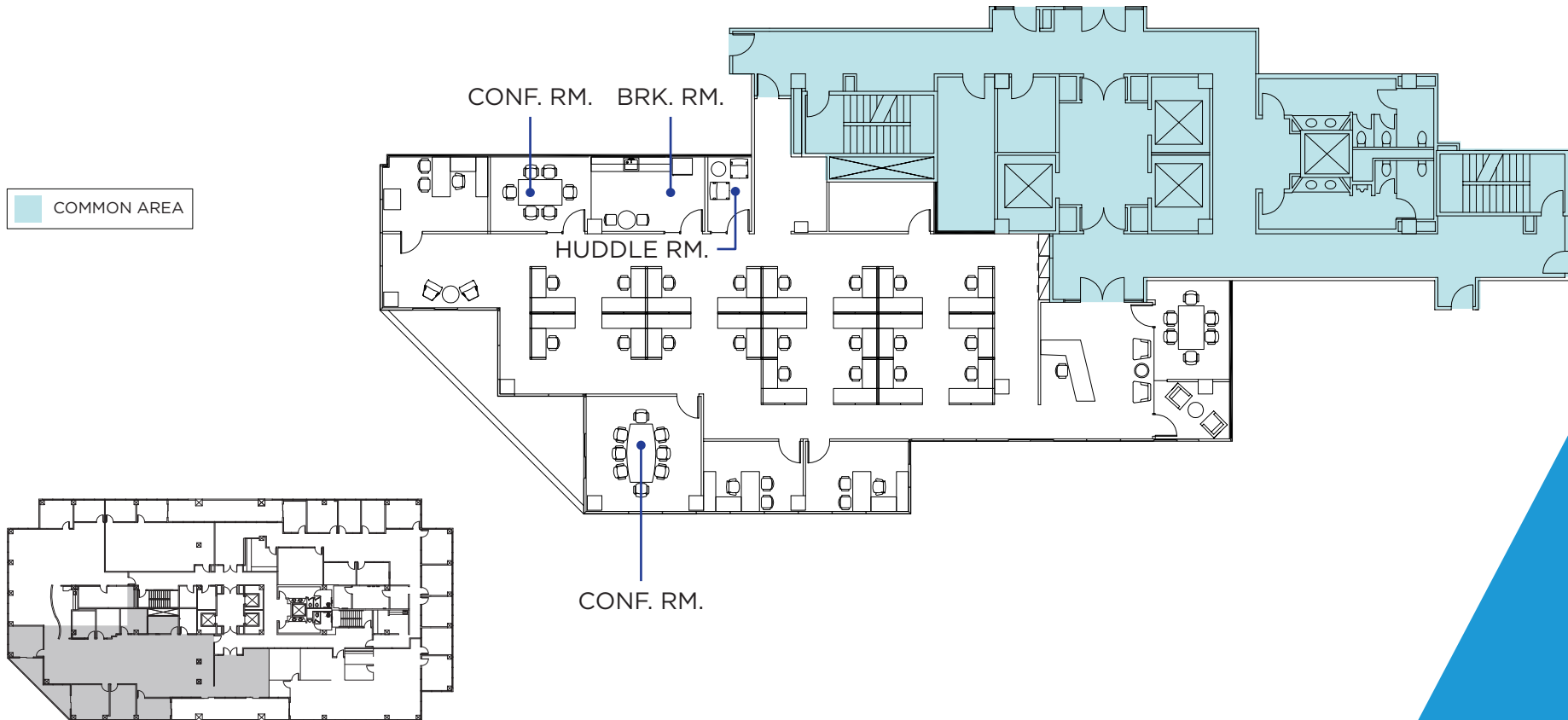
300 Santana Row, Fifth Floor
San Jose, CA 95128
T: +1 408 615 3400
F: +1 408 615 4444
www.cushmanwakefield.com



the **Muller**
company

CONCEPTUAL FLOOR PLAN AND FURNITURE

- Suite 300
- 5,473 SF
- Available in 60 days
- Contiguous to 8,560 SF, 9,737 SF & 12,824 SF



For more information, contact:

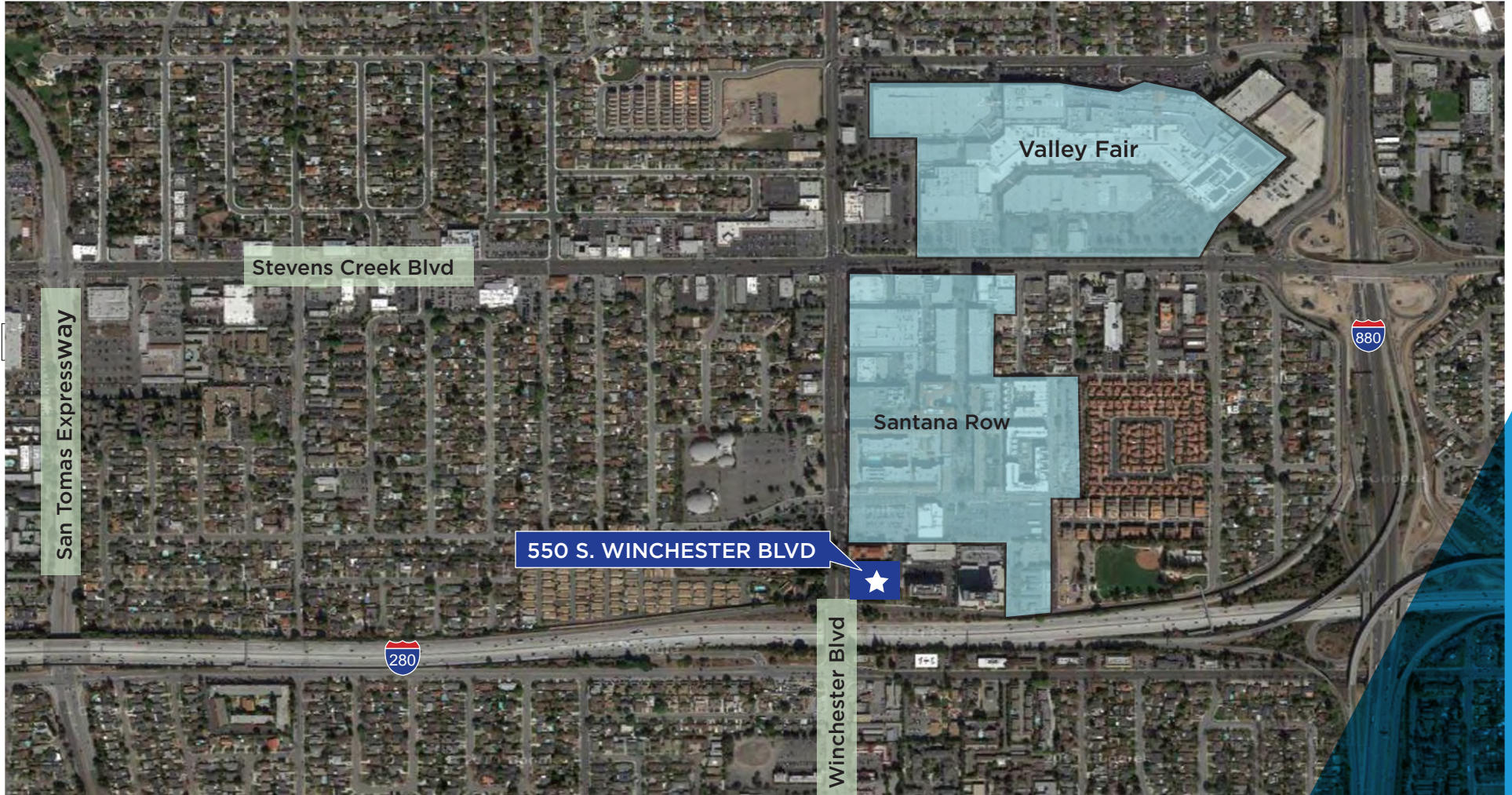
Drew Arvay
Senior Vice President
+1 408 436 3647
drew.arvay@cushwake.com
LIC #00511262

Nick Lazzarini, LEED GA
Managing Director
+1 408 615 3410
nick.lazzarini@cushwake.com
LIC #01788935

300 Santana Row, Fifth Floor
San Jose, CA 95128
T: +1 408 615 3400
F: +1 408 615 4444
www.cushmanwakefield.com



the **Muller**
company



For more information, contact:

Drew Arvay
Senior Vice President
+1 408 436 3647
drew.arvay@cushwake.com
LIC #00511262

Nick Lazzarini, LEED GA
Managing Director
+1 408 615 3410
nick.lazzarini@cushwake.com
LIC #01788935

300 Santana Row, Fifth Floor
San Jose, CA 95128
T: +1 408 615 3400
F: +1 408 615 4444
www.cushmanwakefield.com

