

OFFICE-FLEX SPACE | 9142 West 135th Street, Overland Park, KS 66221



- 4,400 SF office-flex space at Wyndham Creek Business Park
- Space available 1st quarter 2019
- End cap space with one drive-in door
- Located one block north west of 135th and Antioch
- Close proximity to soccer and baseball fields, restaurant/retail services, Deer Creek, Prairie Fire, Corbin Park, and movie theatres

LEASE RATE: \$12.50/SF NNN
NETS: \$5.44/SF
RENT/MONTH: \$6,578

Jill S. Bergthold
jbergthold@fishmancommercial.com
913.747.3322 O | 913.961.0600 C



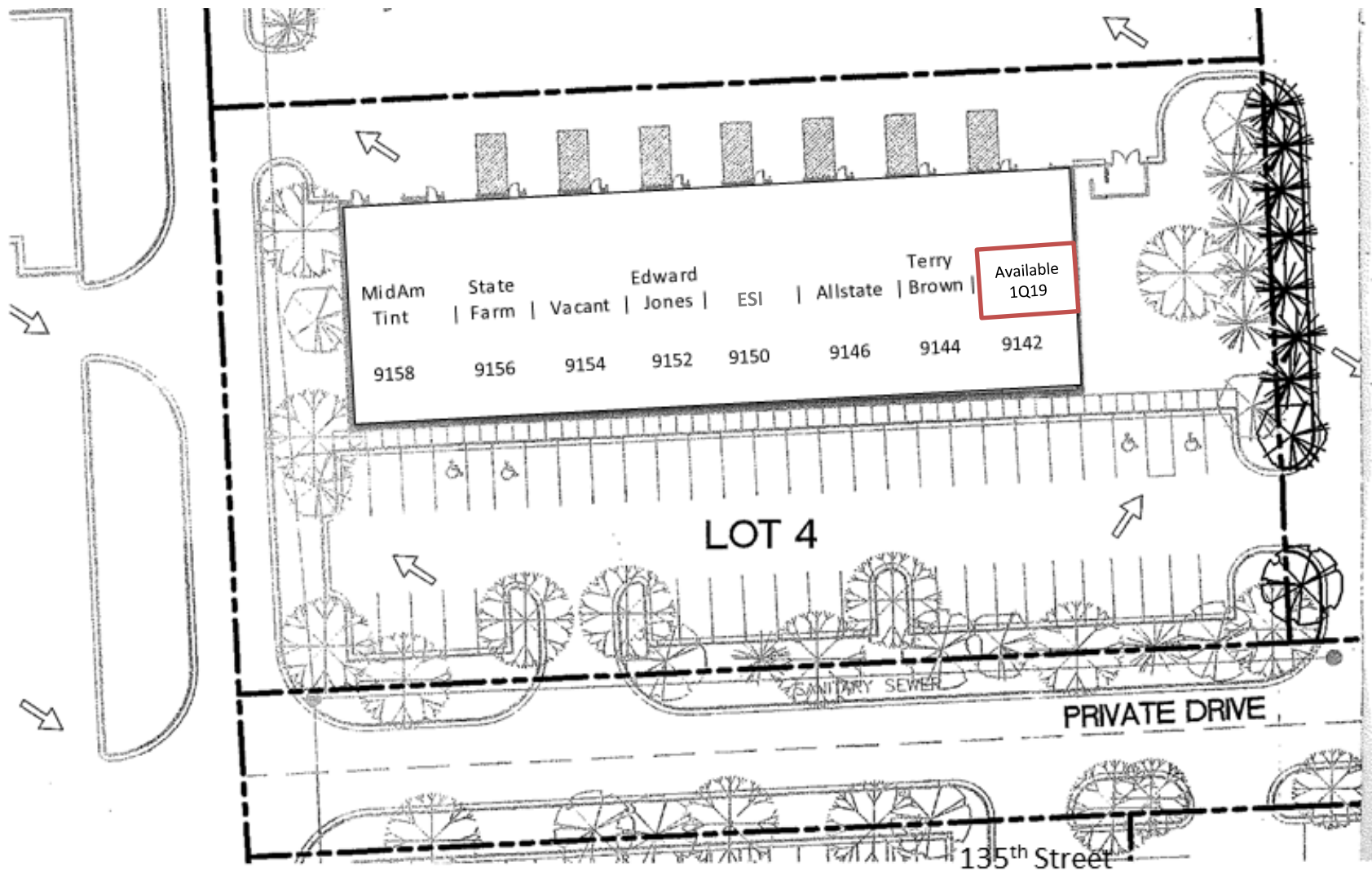
OFFICE-FLEX SPACE | 9142 West 135th Street, Overland Park, KS 66221



Jill S. Bergthold
 jbergthold@fishmancommercial.com
 913.747.3322 O | 913.961.0600 C



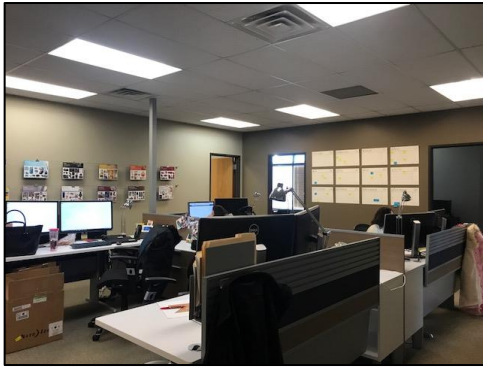
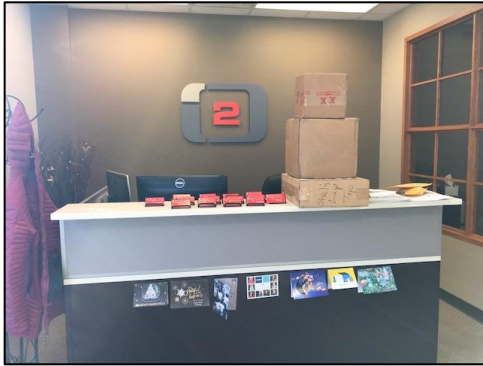
OFFICE-FLEX SPACE | 9142 West 135th Street, Overland Park, KS 66221



Jill S. Bergthold
 jbergthold@fishmancommercial.com
 913.747.3322 O | 913.961.0600 C



OFFICE-FLEX SPACE | 9142 West 135th Street, Overland Park, KS 66221



Jill S. Bergthold
jbergthold@fishmancommercial.com
913.747.3322 O | 913.961.0600 C

