

Olympic Industrial Park

19111 Des Moines
Memorial Drive, Ste E
SeaTac, WA

Back on the Market



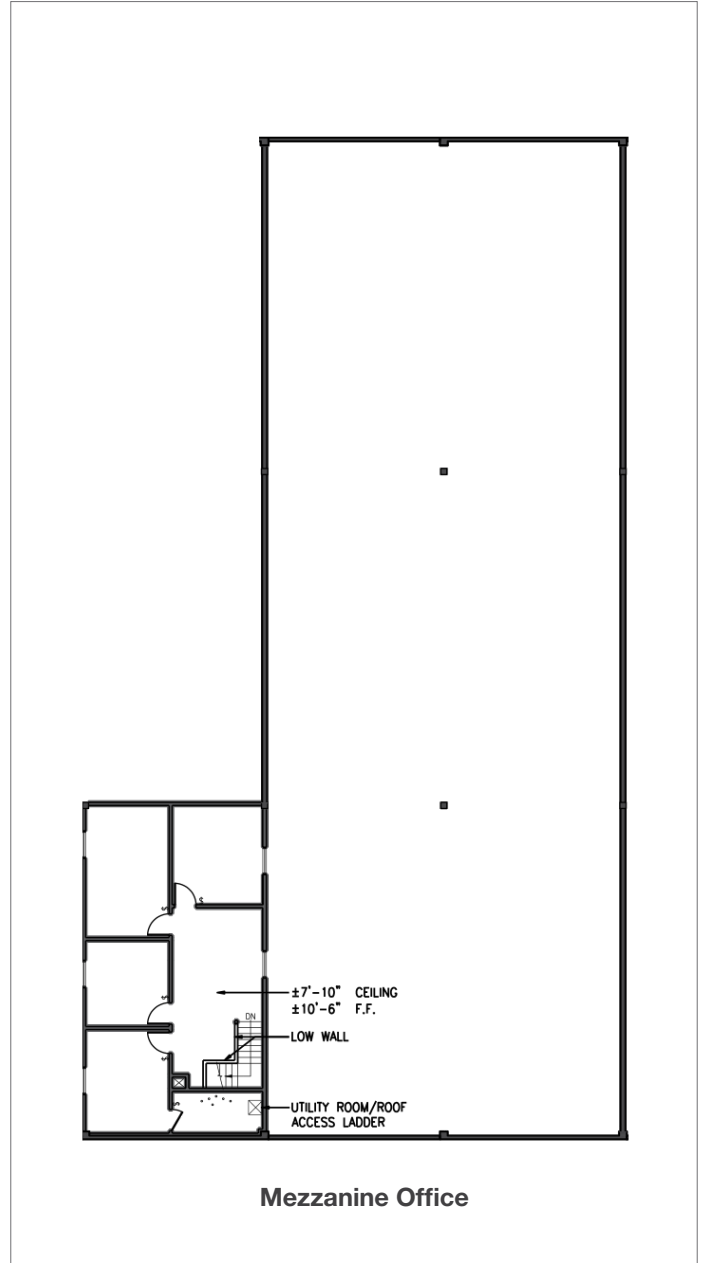
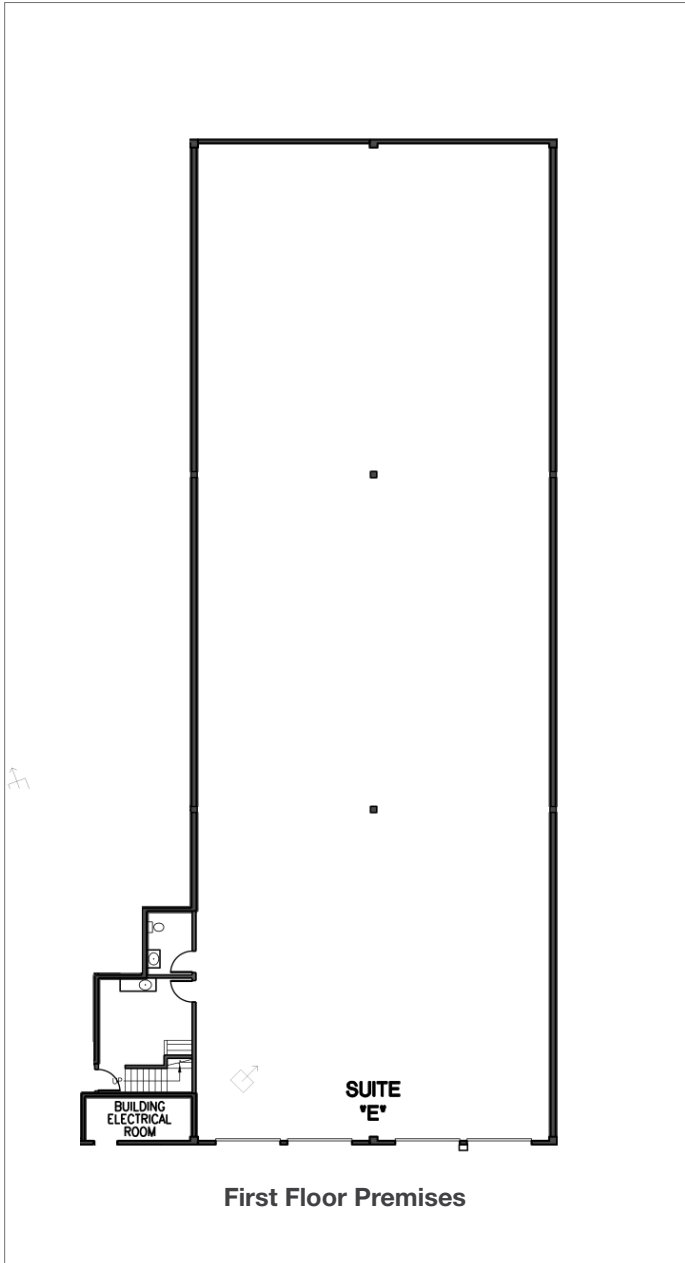
-
- Approximately 8,750 SF total
-
- Approximately 1,462 SF office on two floors
-
- 24' clear height
-
- 4 dock doors
-
- Available now
-
- \$0.70 PSF shell
- \$0.85 PSF office add-on, NNN
-
- Tremendous access to SeaTac and Seattle via SR-509
-



Contact

Doug Klein, SIOR
Senior Vice President, Partner
206.248.7348
dklein@kiddermathews.com

Olympic Industrial Park



Contact

Doug Klein, SIOR
Senior Vice President
206.248.7348
dklein@kiddermathews.com