

CREATIVE OFFICE  
AVAILABLE



1855 FOR LEASE  
FIRST AVENUE, SAN DIEGO, CA 92101

PERRY RE  
COMMERCIAL  
EXPERIENCE PLUS KNOWLEDGE YIELDS RESULTS

# 1855 FOR LEASE

FIRST AVENUE

Located at the Southern end of Bankers Hill and a short distance to Interstate 5 and Highway 163, **1855 First Avenue** offers outstanding accessibility to downtown San Diego as well as panoramic views of the San Diego Harbor and Lindbergh International Airport.

**Space Available:** 4,994 RSF  
**Rental Rate:** \$2.15 per RSF  
Plus Electric and Janitorial

**Features:**

- Secured onsite parking – 2/1,000 RSF
- Ocean views available
- Excellent freeway access
- Flexible space planning

**Current Availabilities:**

Suite	Size (RSF)	Rental Rate
201	4,994	\$2.15

*For More Information,  
Please Contact:*

**Bradford Perry**  
office 619 531 1643  
cell 619 990 1643  
brad@perrycommre.com  
License #: 01204960

**PERRY RE**  
COMMERCIAL

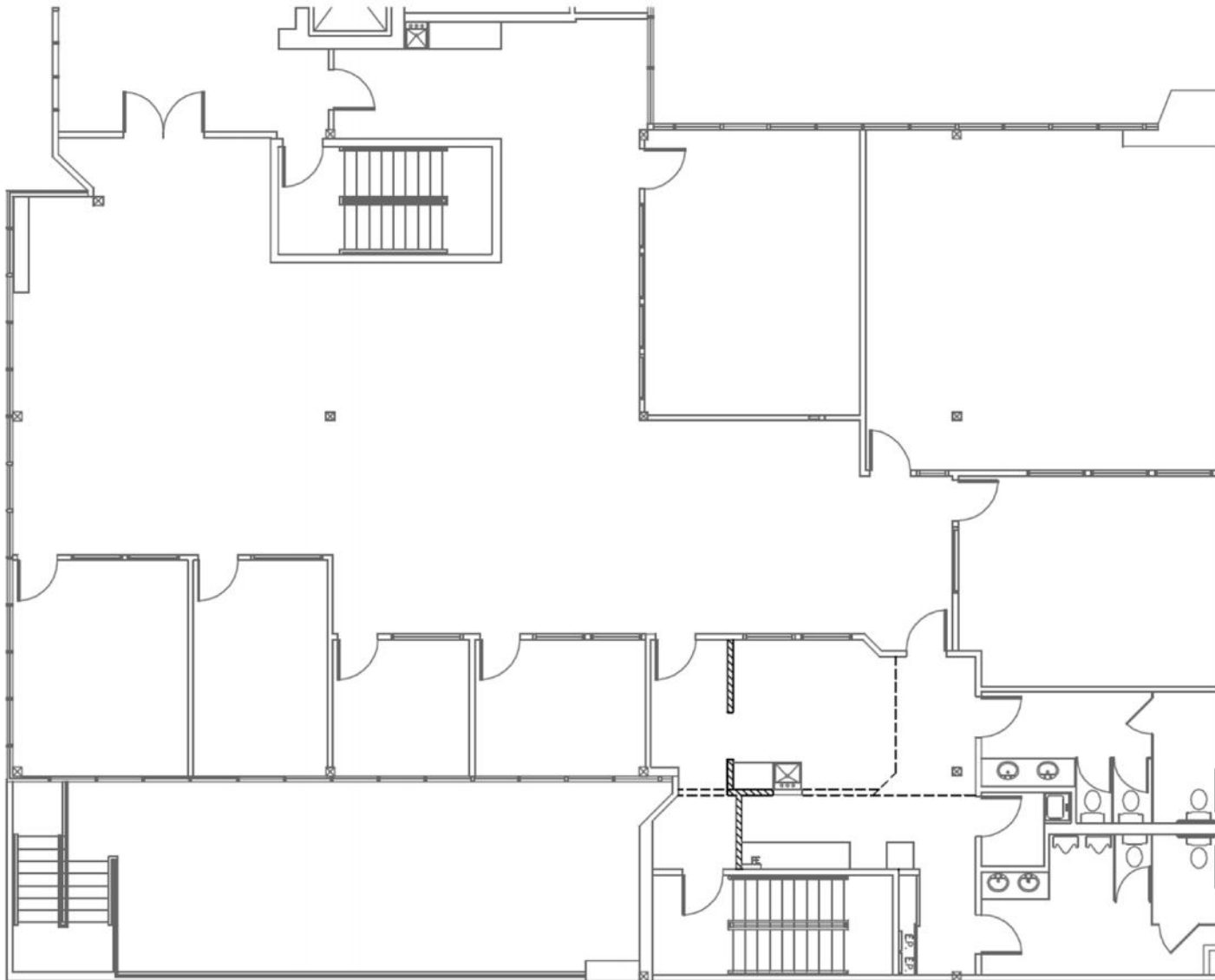
**EXPERIENCE PLUS KNOWLEDGE YIELDS RESULTS**

*Although we have no reason to doubt the accuracy of the enclosed information, we can not guarantee it.*



PERRY RE  
COMMERCIAL

SUITE **201** 4,994 RSF



**CREATIVE OFFICE SPACE**

Available April 2015



**PERRY** **RE**  
COMMERCIAL

**EXPERIENCE PLUS KNOWLEDGE YIELDS RESULTS**

*Although we have no reason to doubt the accuracy of the enclosed information, we can not guarantee it.*



*Scan the QR Code with your smartphone for a virtual tour and additional photographs.*



*For More Information,  
Please Contact:*

**Bradford Perry**

*office* 619 531 1643

*cell* 619 990 1643

[brad@perrycommre.com](mailto:brad@perrycommre.com)

License #: 01204960

**PERRY**RE  
COMMERCIAL

**EXPERIENCE PLUS KNOWLEDGE YIELDS RESULTS**

*Although we have no reason to doubt the accuracy of the enclosed information, we can not guarantee it.*