



MIDDLEFIELD BUSINESS PARK

Mountain View, California

295, 297, 319 and 339 N. Bernardo Avenue
±168,246 SF Available Divisible to ±20,000 SF

**Newmark
Knight Frank**

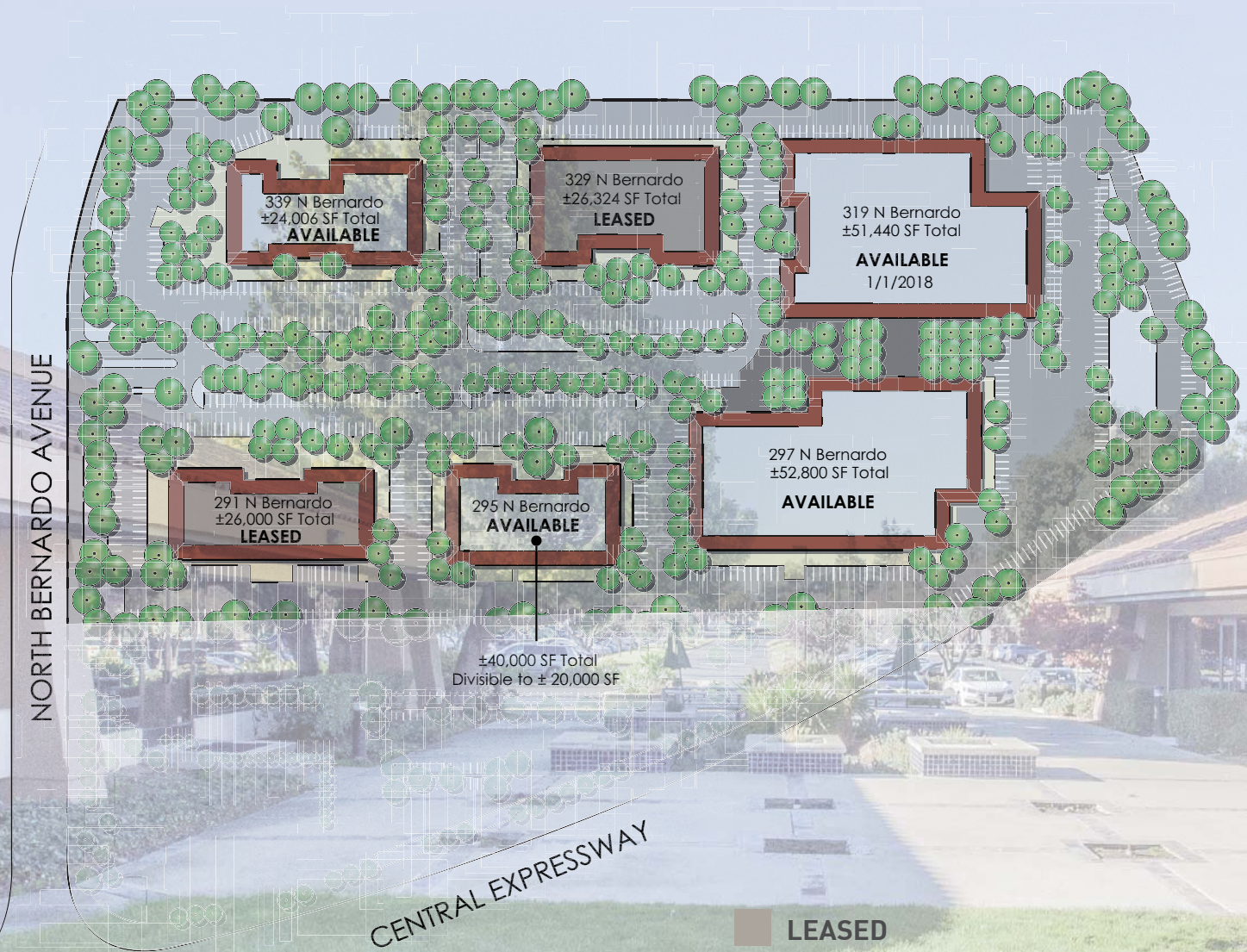
Phil Mahoney 408.982.8430 pmahoney@ngkf.com CA RE License #00834704

Steve Henry 650.473.4763 shenry@ngkf.com CA RE License #01342975

Jack Troedson 650.688.8520 jtroedson@ngkf.com CA RE License #00833129

Shawn Troedson 650.688.8529 shawn.troedson@ngkf.com CA RE License #02023948



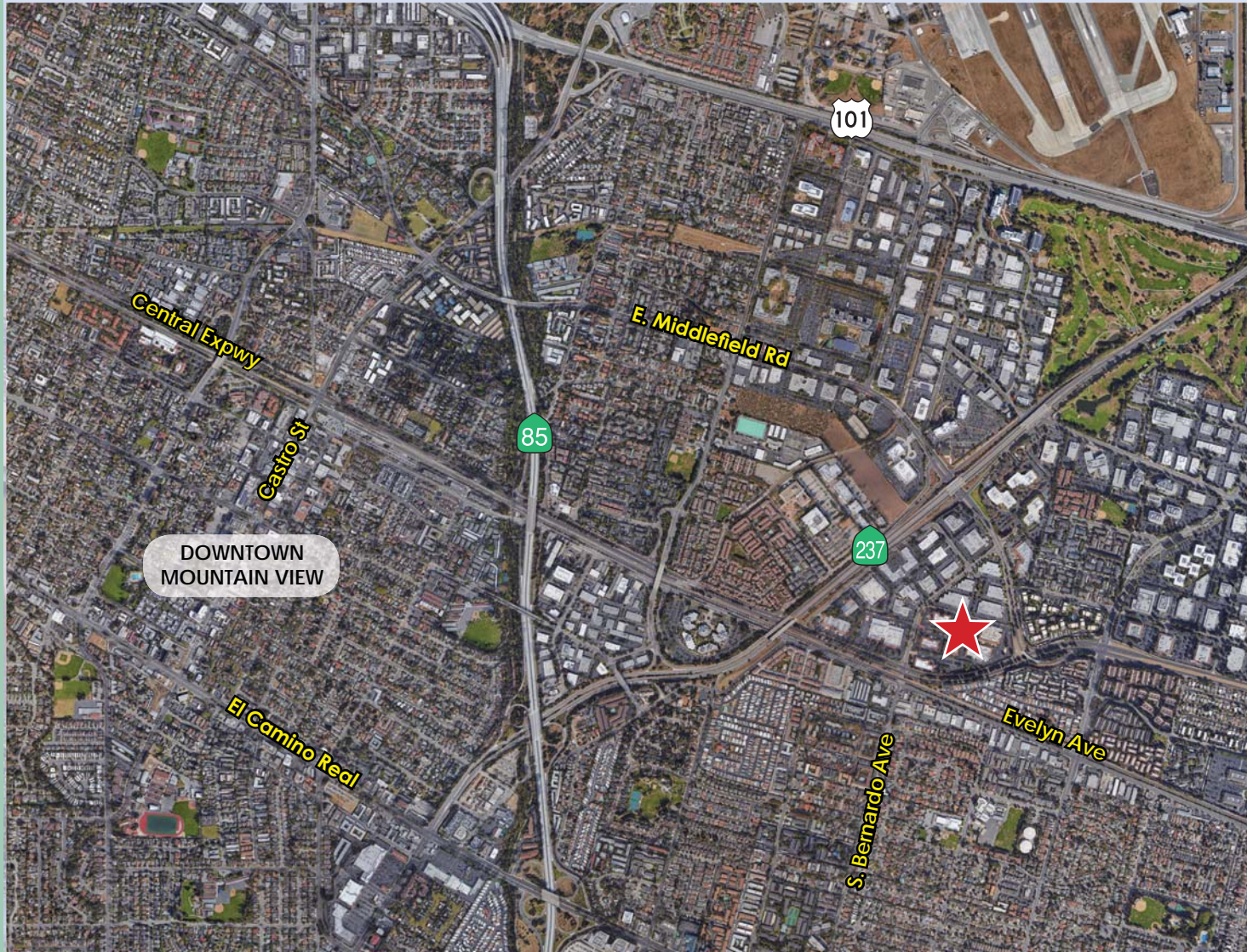


Phil Mahoney 408.982.8430 pmahoney@ngkf.com CA RE License #00834704

Steve Henry 650.473.4763 shenry@ngkf.com CA RE License #01342975

Jack Troedson 650.688.8520 jtroedson@ngkf.com CA RE License #00833129

Shawn Troedson 650.688.8529 shawn.troedson@ngkf.com CA RE License #02023948



Phil Mahoney 408.982.8430 pmahoney@ngkf.com CA RE License #00834704
Steve Henry 650.473.4763 shenry@ngkf.com CA RE License #01342975
Jack Troedson 650.688.8520 jtroedson@ngkf.com CA RE License #00833129
Shawn Troedson 650.688.8529 shawn.troedson@ngkf.com CA RE License #02023948



339 BERNARDO AVENUE - SECOND FLOOR: ±24,006 SF

HIGHLIGHTS

- ✂ 2 Story Building of ±48,384 SF
- ✂ 2nd Floor: ±24,006 SF
- ✂ Ideal space for R&D/Office
- ✂ Abundant Glass, Two-Story Building
- ✂ Attractive Campus Setting
- ✂ Easy Access to Highways 237, 85 and Central Expressway
- ✂ 3.7/1000 Parking

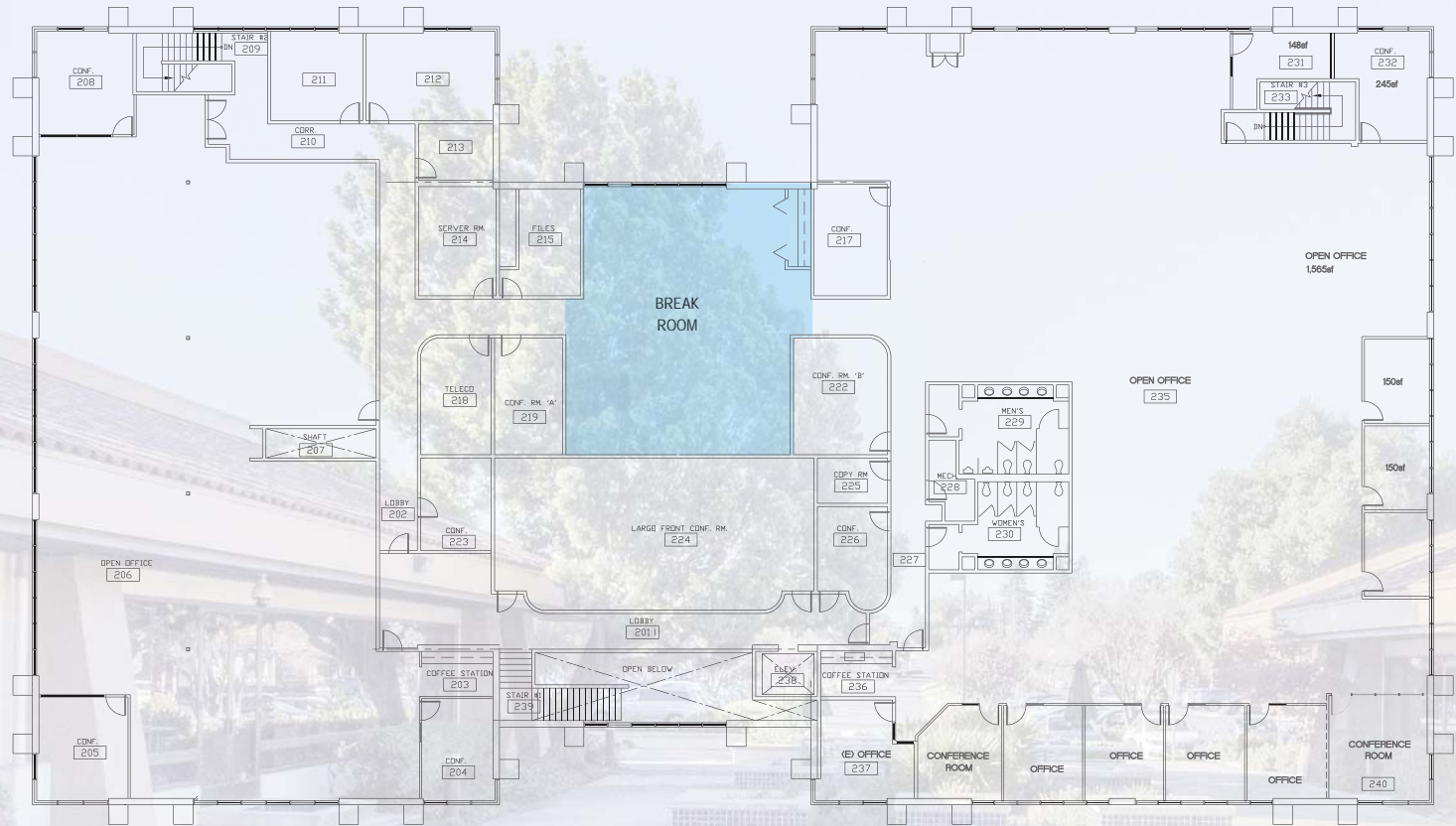
Phil Mahoney 408.982.8430 pmahoney@ngkf.com CA RE License #00834704

Steve Henry 650.473.4763 shenry@ngkf.com CA RE License #01342975

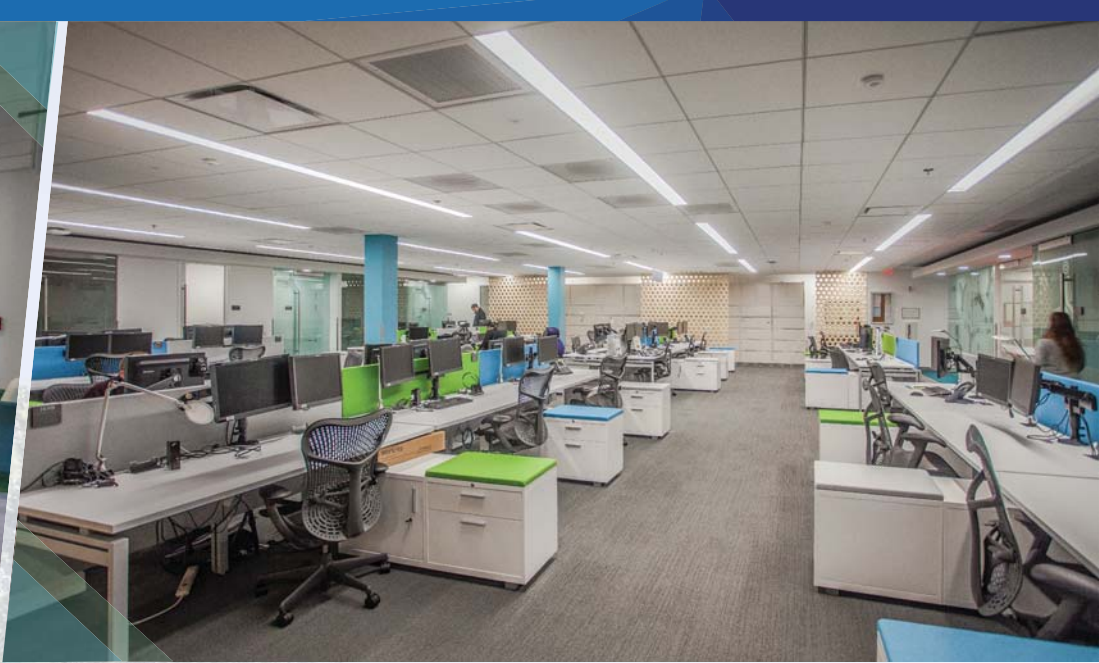
Jack Troedson 650.688.8520 jtroedson@ngkf.com CA RE License #00833129

Shawn Troedson 650.688.8529 shawn.troedson@ngkf.com CA RE License #02023948

339 N. Bernardo Avenue, Mountain View



2nd Floor // ±24,006 SF



319 Bernardo Avenue: ±51,440 SF available

HIGHLIGHTS

- ⌘ Single Story Building
- ⌘ Ideal space for Life Science or R&D/Office
- ⌘ TI Dollars Available
- ⌘ Easily combined with 297 Bernardo for a total of 104,240 SF
- ⌘ 1 Grade Level door and 3 Dock High Doors
- ⌘ 2000 Amp power
- ⌘ Available Q2 2018
- ⌘ 3.7/1000 Parking



Phil Mahoney 408.982.8430 pmahoney@ngkf.com CA RE License #00834704

Steve Henry 650.473.4763 shenry@ngkf.com CA RE License #01342975

Jack Troedson 650.688.8520 jtrodson@ngkf.com CA RE License #00833129

Shawn Troedson 650.688.8529 shawn.troedson@ngkf.com CA RE License #02023948

319 N. Bernardo Avenue, Mountain View
±51,440 SF





AVAILABLE NOW: 297 BERNARDO AVENUE: ±52,800 SF

HIGHLIGHTS

- ✕ Single Story Building
- ✕ Ideal space for Life Science or R&D/Office
- ✕ TI Dollars Available
- ✕ Easily combined with 319 Bernardo for a total of ±104,240 SF
- ✕ 2000 Amp Power
- ✕ 2 Grade Level Doors and 2 Dock High Doors
- ✕ 3.7/1000 Parking

Phil Mahoney 408.982.8430 pmahoney@ngkf.com CA RE License #00834704

Steve Henry 650.473.4763 shenry@ngkf.com CA RE License #01342975

Jack Troedson 650.688.8520 jtroedson@ngkf.com CA RE License #00833129

Shawn Troedson 650.688.8529 shawn.troedson@ngkf.com CA RE License #02023948



297 N. Bernardo Avenue, Mountain View Shell Floorplan // ±52,800 SF



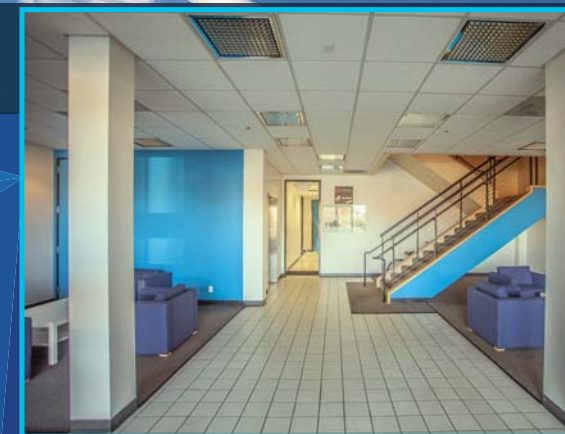


AVAILABLE NOW: 295 BERNARDO AVENUE: ±40,000 SF

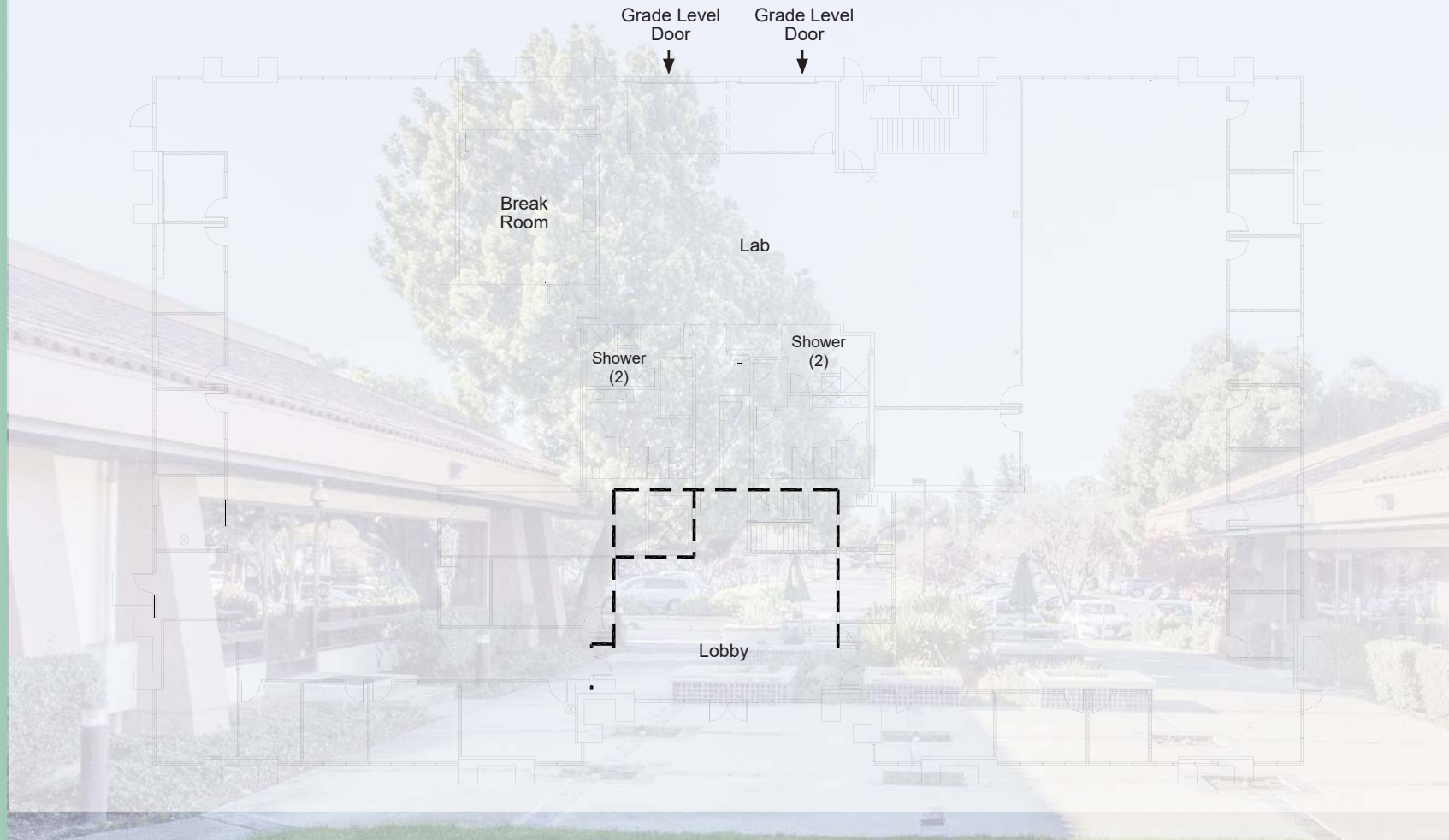
HIGHLIGHTS

- ⌘ 2 Story Building ±40,000 SF
- ⌘ Divisible by Floor to ±20,000 SF
- ⌘ Lab and Server Rooms
- ⌘ 2 Grade Level Roll Ups
- ⌘ 3.7/1000 Parking
- ⌘ 2400 Amp Power

Phil Mahoney 408.982.8430 pmahoney@ngkf.com CA RE License #00834704
Steve Henry 650.473.4763 shenry@ngkf.com CA RE License #01342975
Jack Troedson 650.688.8520 jtroedson@ngkf.com CA RE License #00833129
Shawn Troedson 650.688.8529 shawn.troedson@ngkf.com CA RE License #02023948



295 N. Bernardo Avenue, Mountain View First Floor - Floorplan // $\pm 20,000$ SF



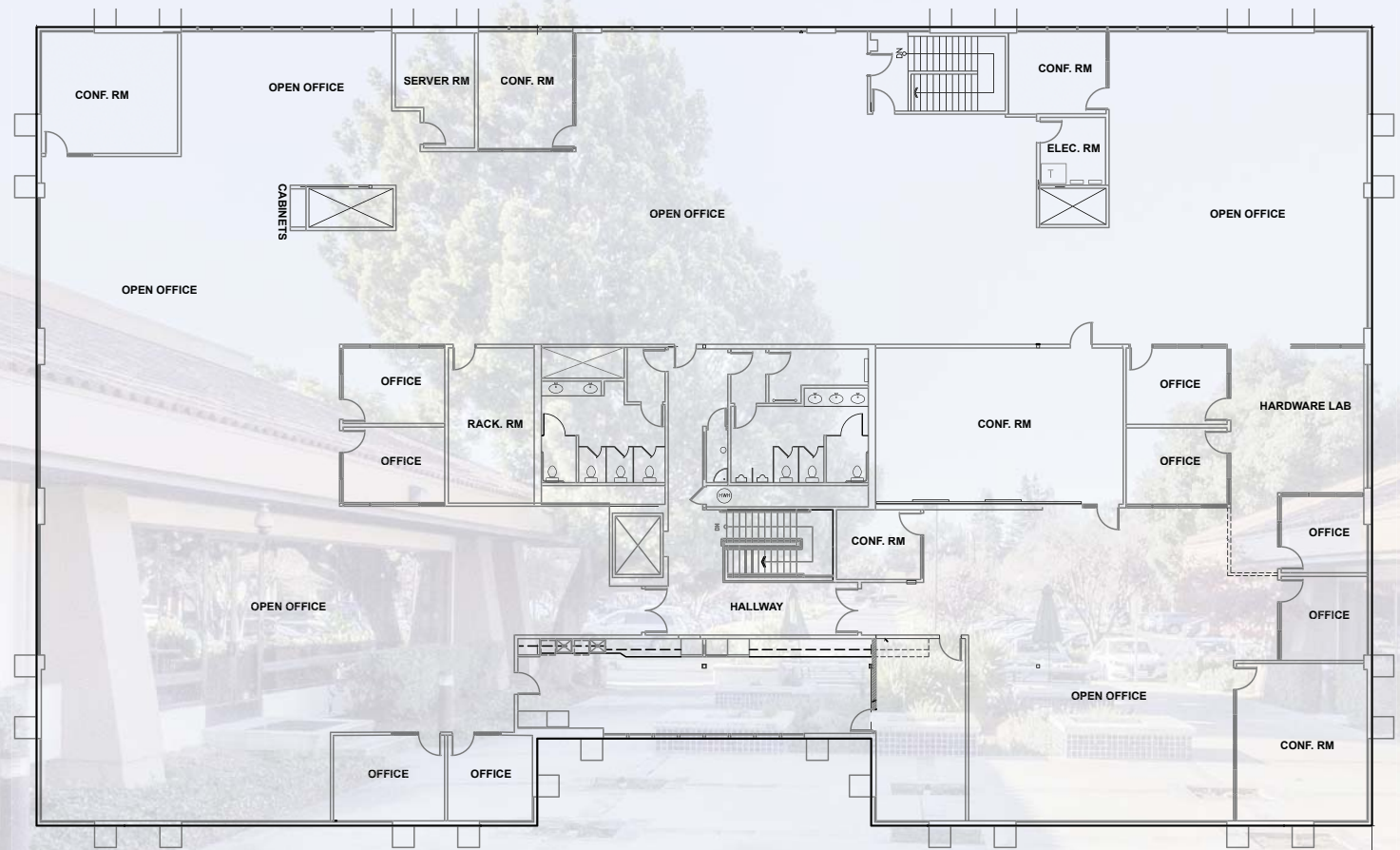
Phil Mahoney 408.982.8430 pmahoney@ngkf.com CA RE License #00834704

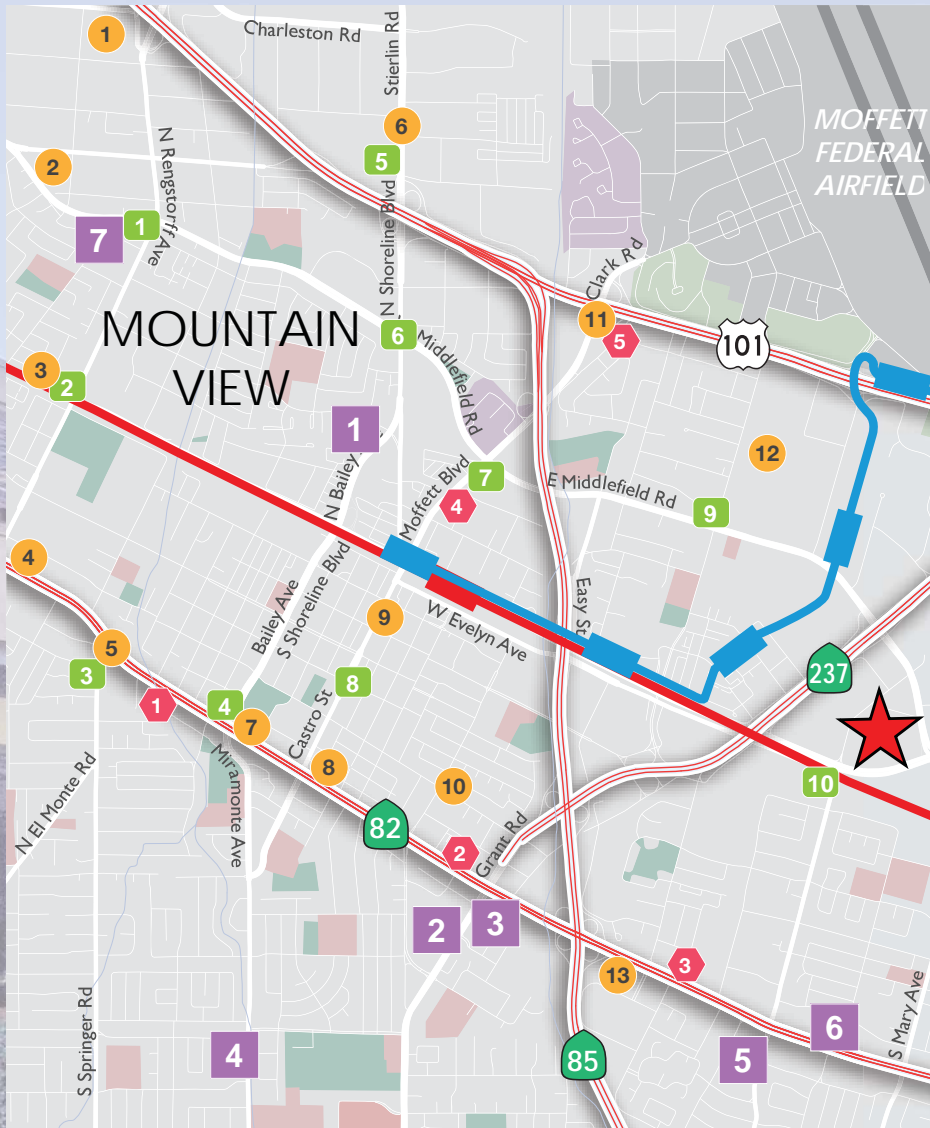
Steve Henry 650.473.4763 shenry@ngkf.com CA RE License #01342975

Jack Troedson 650.688.8520 jtroedson@ngkf.com CA RE License #00833129

Shawn Troedson 650.688.8529 shawn.troedson@ngkf.com CA RE License #02023948

295 N. Bernardo Avenue, Mountain View Second Floor - Floorplan // ±20,000 SF





RESTAURANTS

1. Chipotle
2. Rengstorff Pho
3. Las Muchachas Restaurant
4. Hobee's
5. Maldonado's Pizzeria
6. ViVe Sol
7. Chipotle
8. Panera Bread
9. The Country Deli
10. Cucina Venti
11. Sunny Bowl
12. Garden Fresh
13. Frankie Johnnie & Luigi Too
14. Morocco's Restaurant
15. Amber Cafe
16. Sushi Tomi
17. Kirin Chinese
18. Chez TJ
19. Xanh
20. Fu Lam Mum
21. Bangkok Spoon
22. Pho To Chau
23. Yakko
24. New Mongolian BBQ
25. Sushi Tomi
26. Shiva's
27. Casa Lupe
28. Sakoon
29. Tied House
30. Yam Leaf Bistro
31. Mario's Italiano
32. Simply Thai Street Food
33. Hangout Cafe
34. Satsuma Sushi
35. Himalayan Kitchen
36. Chalateco

SHOPPING CENTERS

1. **Bailey Park Plaza**
Safeway, Momoya Sushi, Round Table Pizza, Big Bites, Dickey's Barbecue Pit
2. **Grant Park Plaza**
In-N-Out Burger, Chevron, Valero, New York Pizza, Sweet Tomatoes, U.S. Bank, Nob Hill Foods, Peet's, 99 Ranch Market, Ocha Tea Cafe & Restaurant, Sush 85, Erik's DeliCafe
3. **Mountain View**
The Sandwich Spot, Smart & Final, Nijiya Market, Chaat Paradise, Starbucks
4. **Blossom Valley**
Safeway, Starbucks, Mountain Mike's Pizza, Wells Fargo Bank, House of Bagels, Shell, China Cafe, CVS Pharmacy
5. **Cherry Chase**
Chase Bank, Safeway, Wells Fargo Bank, First Wok, Hanamaru, Casa Lupe
6. **Cala Center**
Madras Cafe, The Old Siam, La Miche, Achi Appakadai, Chevron, Pezzella's Villa Napoli
7. **Monta Loma Plaza**
Fresh & Easy, Xinh Vu, Starbucks, Bangkok Bistro, Taqueria La Bamba, Meriwest Credit Union

SERVICES

1. Valero
2. Shell
3. Mi Pueblo
4. 76
5. Shell
6. Gold's Gym
7. Chevron
8. Shell
9. ARCO
10. Valero
11. Wells Fargo Bank
12. Bank of America
13. Bank of the West
14. Rotten Robbie
15. 76

HOTELS

1. Residence Inn
2. Super 8
3. Holiday Inn Express
4. Hotel Vue
5. Hotel Strata
6. Hilton Garden Inn
7. Hotel Avante
8. TownePlace Suites
9. Hampton Inn & Suites
10. Quality Inn & Suites
11. Ramada
12. County Inn

LIGHT RAIL STATIONS

CALTRAIN STATIONS



AMENITIES MAP: MOUNTAIN VIEW



Phil Mahoney 408.982.8430 pmahoney@ngkf.com CA RE License #00834704
 Steve Henry 650.473.4763 shenry@ngkf.com CA RE License #01342975
 Jack Troedson 650.688.8520 jtroedson@ngkf.com CA RE License #00833129
 Shawn Troedson 650.688.8529 shawn.troedson@ngkf.com CA RE License #02023948

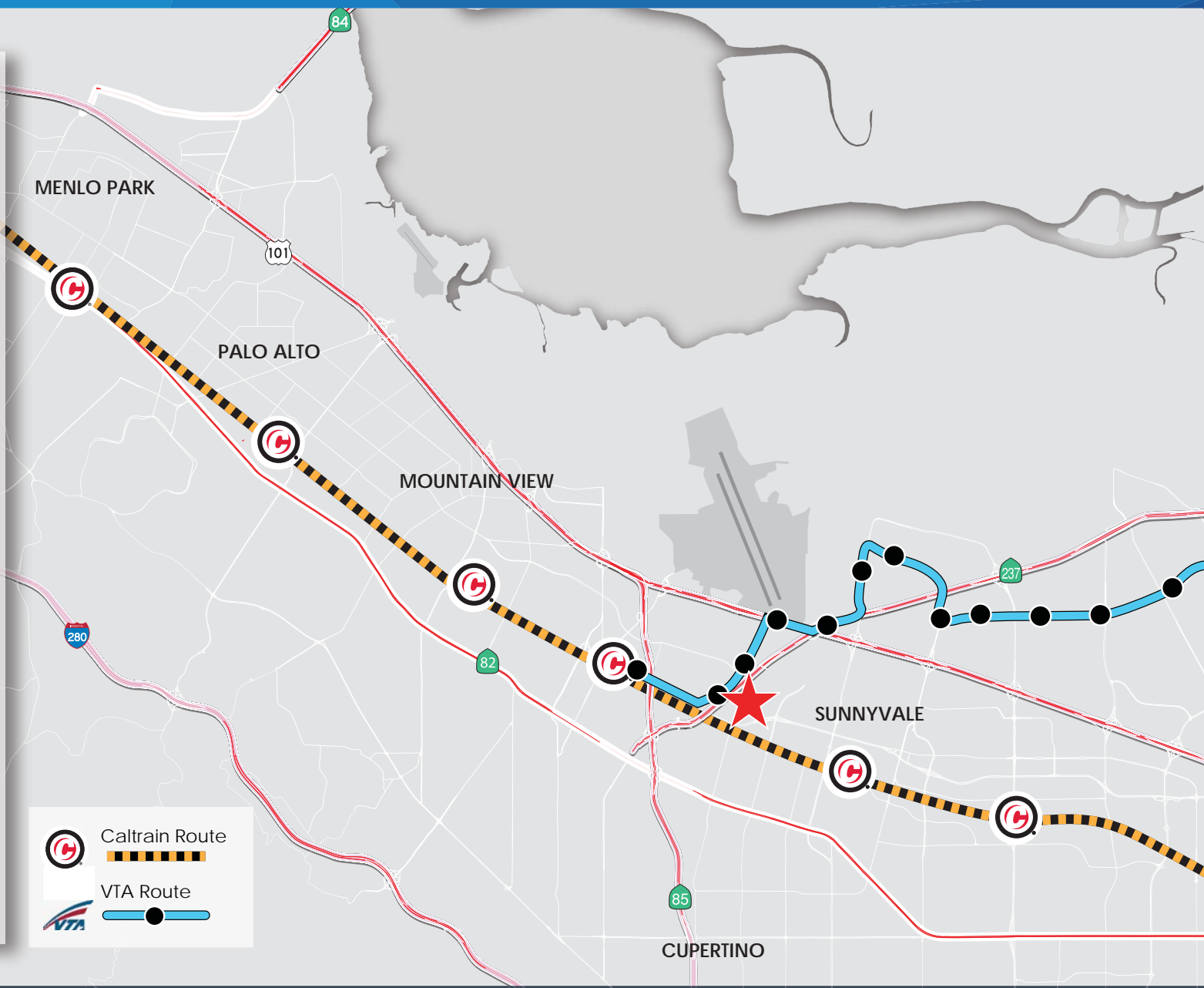


Northbound		
Train No.	227	329
Gilroy	7:05	-
San Martin	7:14	-
Morgan Hill	7:20	-
Blossom Hill	7:33	-
Capitol	7:39	-
Tamien	7:47	7:56
San Jose Diridon	7:55	8:03
College Park	7:58	-
Santa Clara	8:02	-
Lawrence	8:12	-
Sunnyvale	8:18	-
Mountain View	8:23	-
San Antonio	8:27	-
California Ave	8:31	-
Palo Alto	8:36	8:23
Menlo Park	8:39	-

Southbound		
Train No.	362	266
San Francisco	4:09	4:27
22nd St	-	4:32
Bayshore	-	4:40
So. San Francisco	-	4:48
San Bruno	-	4:52
Millbrae	4:25	4:56
Burlingame	-	5:00
San Mateo	-	5:04
Hayward Park	-	5:07
Hillsdale	4:33	5:11
Belmont	-	5:14
San Carlos	-	5:18
Redwood City	-	5:22
Melo Park	-	5:28
Palo Alto	4:44	-
California Ave	-	-
San Antonio	-	-
Mountain View	4:51	5:36
Sunnyvale	-	-
Lawrence	-	-
Santa Clara	-	5:47
College Park	-	-
San Jose Diridon	5:06	5:55
Tamien	-	-

 Caltrain Route


 VTA Route




TRANSPORTATION MAP: SILICON VALLEY

Phil Mahoney 408.982.8430 pmahoney@ngkf.com CA RE License #00834704
Steve Henry 650.473.4763 shenry@ngkf.com CA RE License #01342975
Jack Troedson 650.688.8520 jtroedson@ngkf.com CA RE License #00833129
Shawn Troedson 650.688.8529 shawn.troedson@ngkf.com CA RE License #02023948





MIDDLEFIELD BUSINESS PARK

Phil Mahoney 408.982.8430 pmahoney@ngkf.com CA RE License #00834704
Steve Henry 650.473.4763 shenry@ngkf.com CA RE License #01342975
Jack Troedson 650.688.8520 jtroedson@ngkf.com CA RE License #00833129
Shawn Troedson 650.688.8529 shawn.troedson@ngkf.com CA RE License #02023948

**Newmark
Knight Frank**

The information contained herein has been obtained from sources deemed reliable but has not been verified and no guarantee, warranty or representation, either express or implied, is made with respect to such information. Terms of sale or lease and availability are subject to change or withdrawal without notice. 16-1536•11/17

