



# COTTONWOOD CORPORATE CENTER

# 8



**LEED Existing  
Building Certified**

## 2755 East Cottonwood Parkway

Cottonwood Corporate Center is one of Salt Lake City's most prestigious locations. Nestled at the foot of the Wasatch Mountains, the center overlooks nearly the entire Salt Lake Valley. With easy access to I-215 freeway, you're just 20 minutes away from downtown Salt Lake City, Park City and the Salt Lake International Airport. Four ski resorts are also just minutes away, and nearby are several premier hotels, many popular restaurants and Old Mill Golf Course.

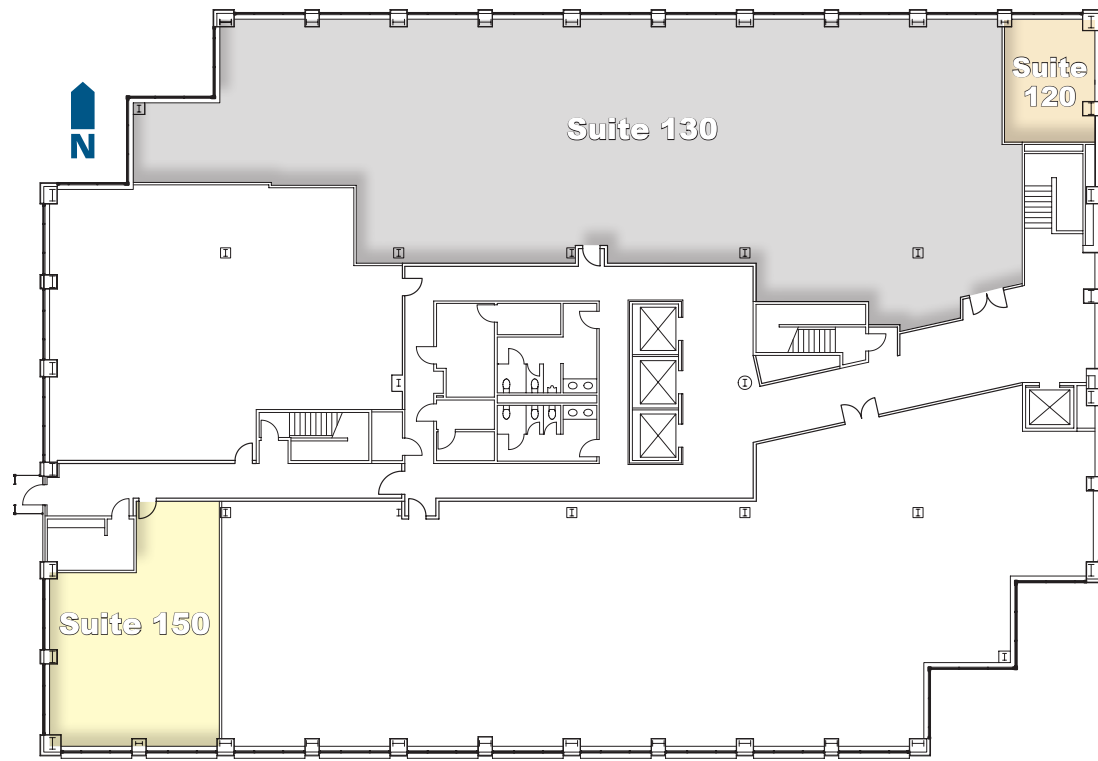
- \$32.00 - \$34.00/RSF, full service
- 4:1,000 Parking
- Bike/ski lockers
- Coming soon: tenant lounge, conference center and patio
- Covered and reserved parking available
- Crown and monument signage available
- On-site property management and engineering
- New fully equipped fitness center with new lockers and showers
- Electric charging stations

**Dana Baird, CCIM**  
Executive Managing Director  
801.303.5526  
dana.baird@cushwake.com

**Mike Richmond**  
Executive Managing Director  
801.303.5434  
mike.richmond@cushwake.com

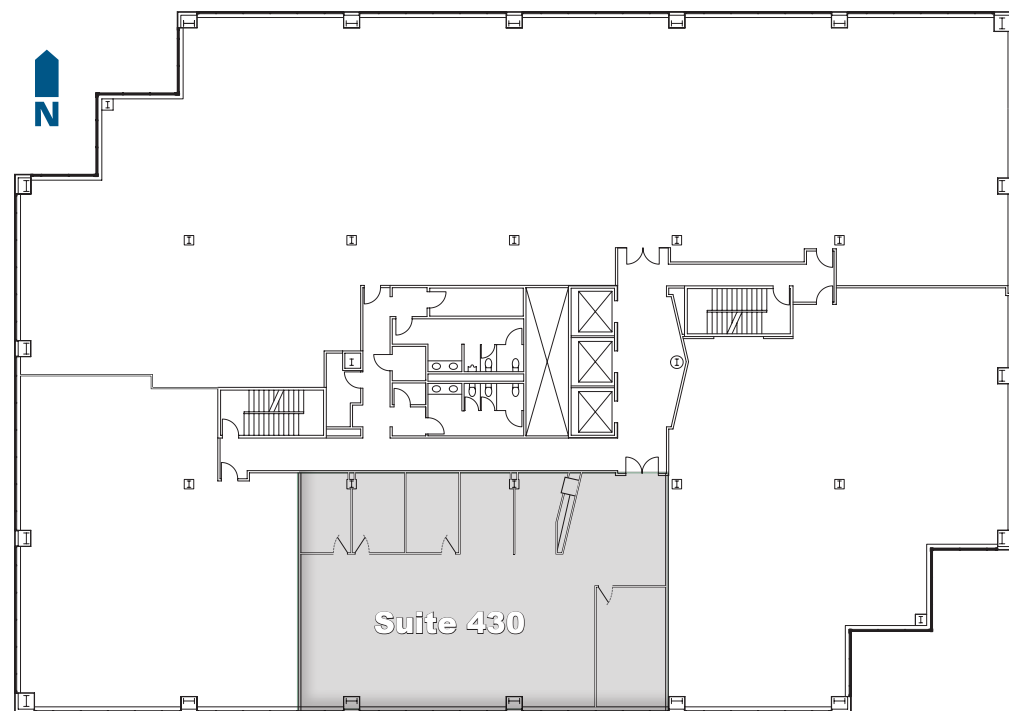
**Amanda Lawson**  
Senior Associate  
801.303.5492  
amanda.lawson@cushwake.com





**Floor One**

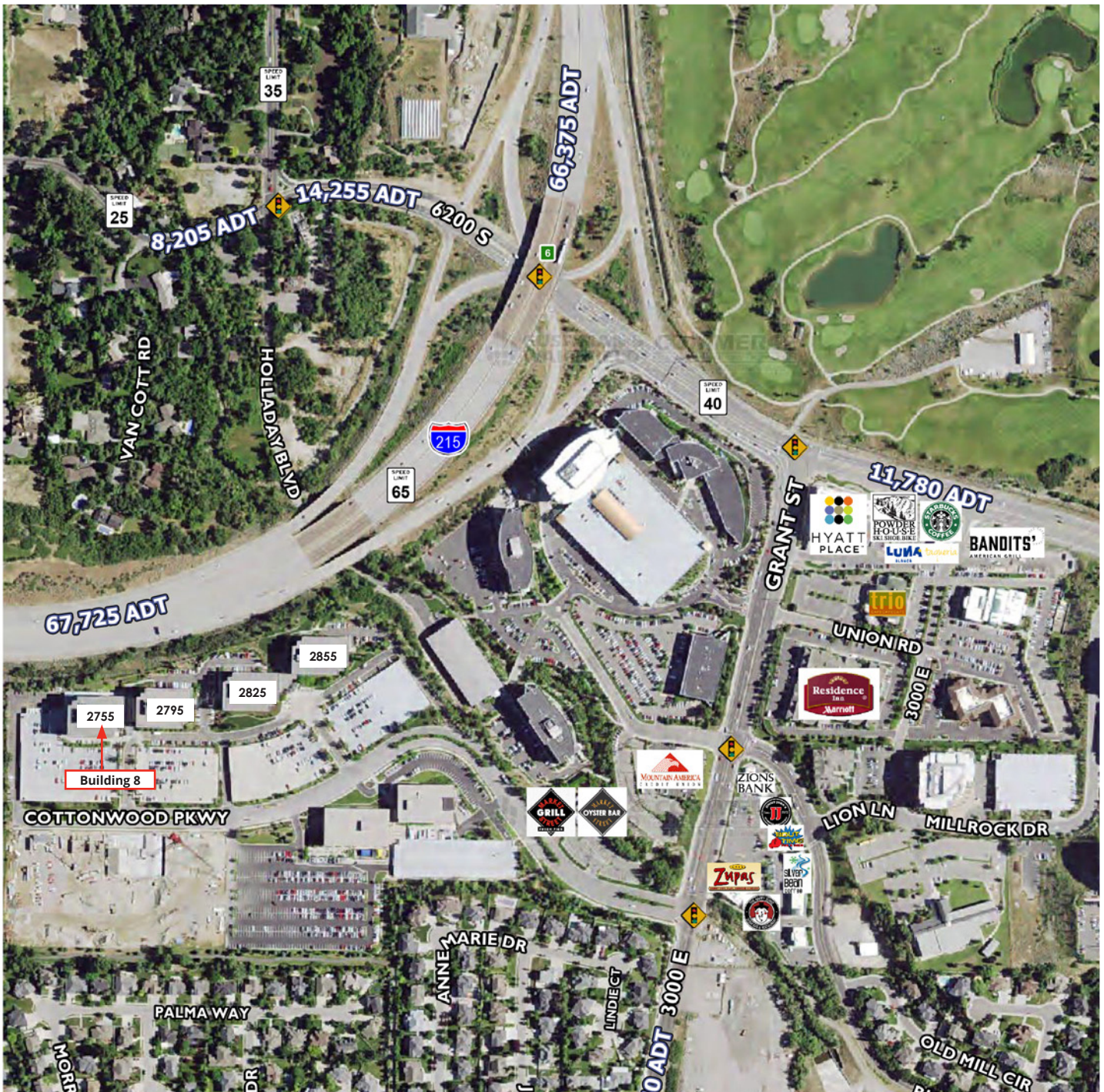
- Suite 120: 452 RSF
- Suite 130: 8,010 RSF  
Available Immediately
- Prominent 1<sup>st</sup> floor space
- Suite 150: 1,361 RSF



**Floor Four**

- Suite 430: 3,620 RSF  
Available 8/1/2020
- Great elevator presence





# Hines

Hines is a privately owned global real estate investment firm founded in 1957 with a presence in 182 cities in 20 countries. Hines has \$89.1 billion of assets under management, including \$42.5 billion for which Hines provides fiduciary investment management services, and \$46.6 billion for which Hines provides third-party property-level services. The firm has 109 developments currently underway around the world, including several major projects in Manhattan. Historically, Hines has developed, redeveloped or acquired 1,126 properties, totaling over 350 million square feet. The firm's current property and asset management portfolio includes 457 properties, representing over 193 million square feet. With extensive experience in investments across the risk spectrum and all property types, and a pioneering commitment to sustainability, Hines is one of the largest and most-respected real estate organizations in the world. Visit [www.hines.com](http://www.hines.com) for more information.

**Dana Baird, CCIM**  
Executive Managing Director  
801.303.5526  
[dana.baird@cushwake.com](mailto:dana.baird@cushwake.com)

**Mike Richmond**  
Executive Managing Director  
801.303.5434  
[mike.richmond@cushwake.com](mailto:mike.richmond@cushwake.com)

**Amanda Lawson**  
Senior Associate  
801.303.5492  
[amanda.lawson@cushwake.com](mailto:amanda.lawson@cushwake.com)

