



DOWNTOWN

OFFICE

VIEWS

SECURE

PROPERTY INFORMATION

The Spokane Intermodal Facility at 221 W. 1st Avenue is pleasantly located in the downtown periphery. This convenient location offers secure access to available office space on third floor of the main building and boasts fantastic balcony views that overlook the City. Contact brokers for more information.

AVAILABLE SPACES

SPACE	LEASE RATE	SIZE (SF)
1st Floor Retail Space	\$13.50 SF/yr	1,700 SF
3rd Floor	\$13.50 SF/yr	1,390 SF

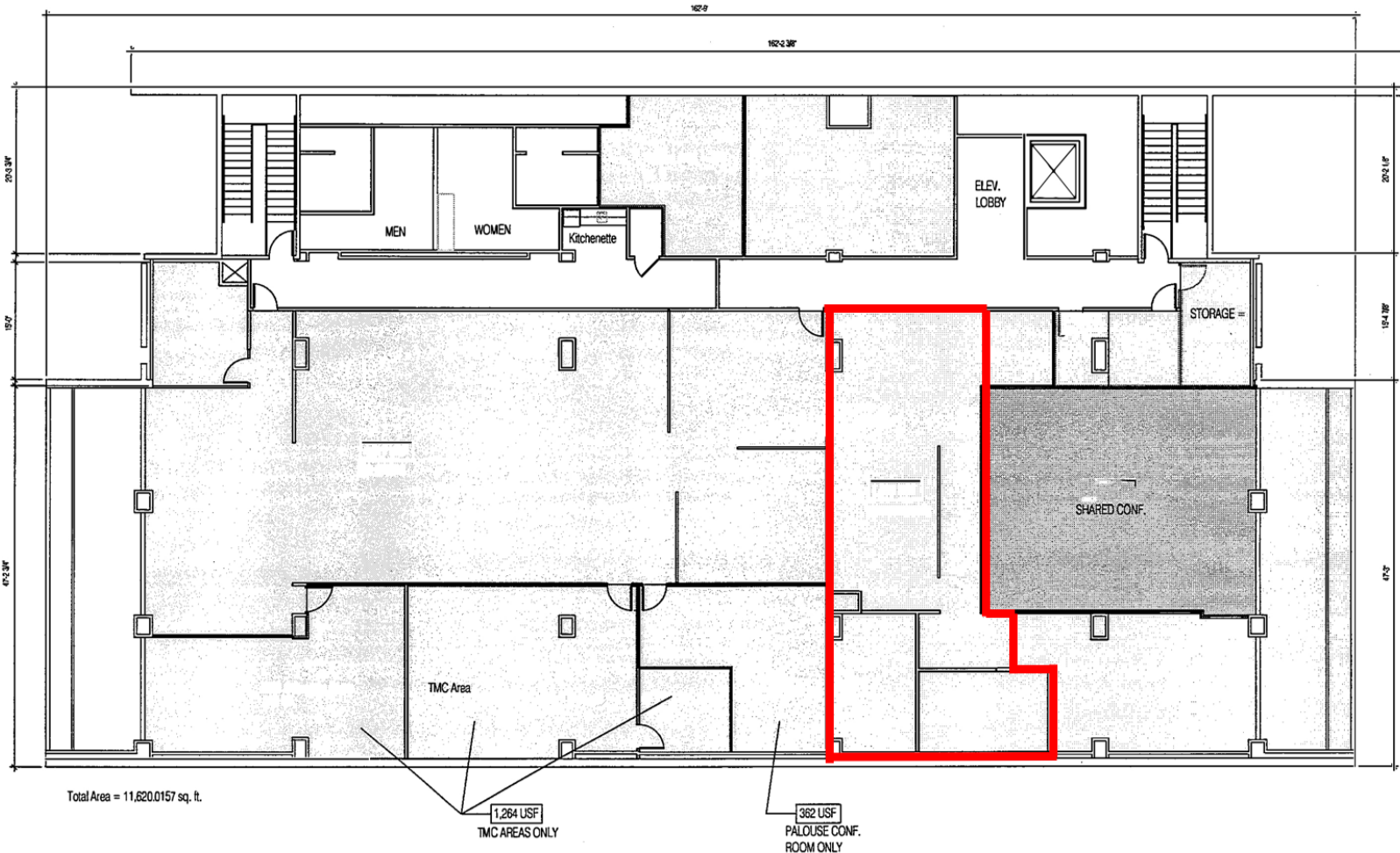
PROPERTY FEATURES

- Constructed in 1891
- \$13.50 PSF FS (includes city excise tax of 12.84%)
- Secure Access to Space
- Personal Break Room / Employee Lounge
- ADA Accessible
- Showers and Lockers
- Beautiful Downtown Views and Balcony
- Building Wired for Fiber and High Speed Access
- Available Onsite Parking
- Other tenants include Spokane Regional Transportation Center, AMTRAK, Greyhound, Spokane Police Dept

Goodale & Barbieri Company
818 West Riverside #300
Spokane, WA 99201
www.g-b.com

Clayton McFarland | Commercial & Leasing Manager
509.344.4929 // cmcfarland@g-b.com

1



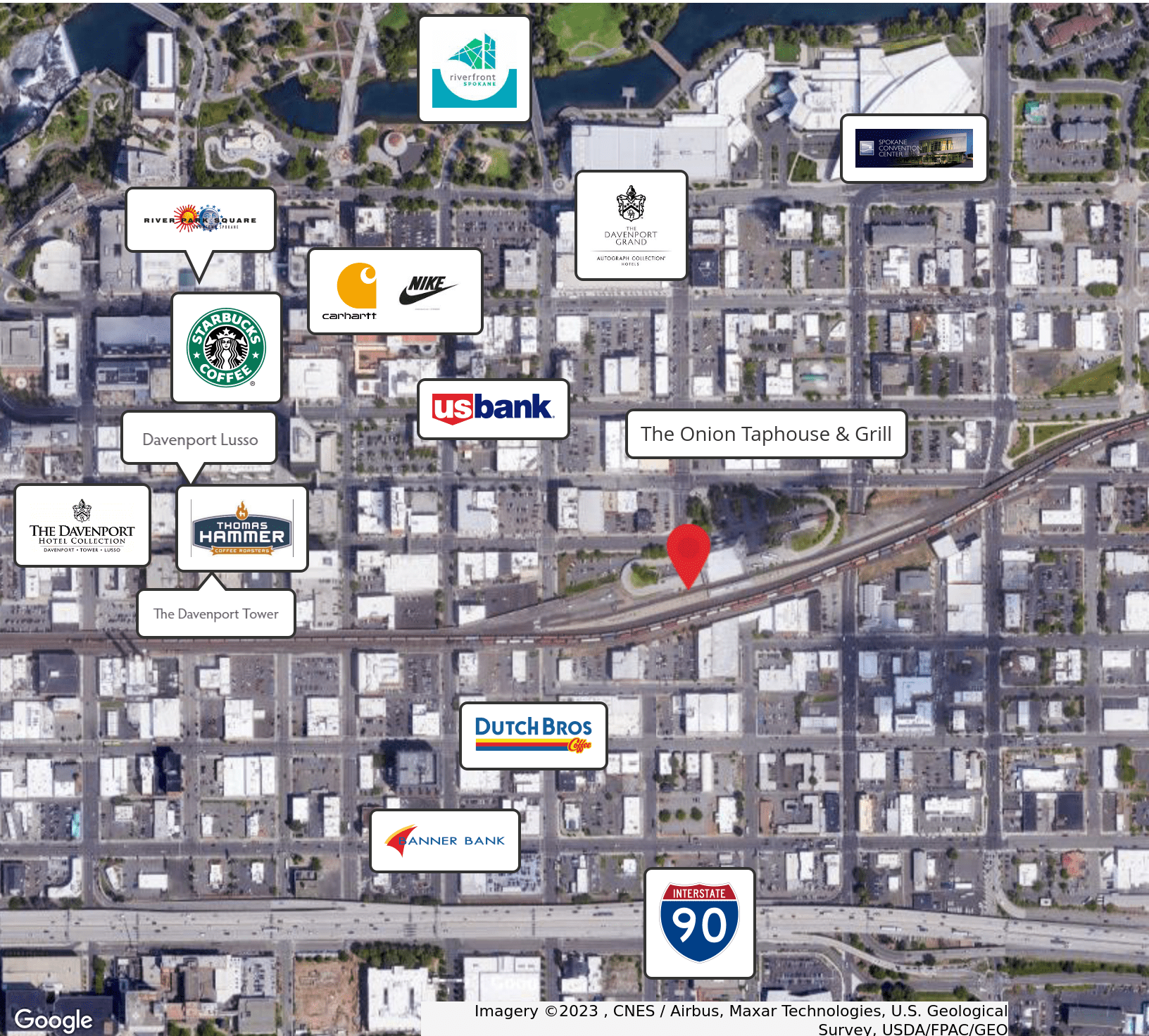
INTERMODEL - 3RD FLOOR
SCALE: 1/8" = 1'-0"
NORTH

6.20.14

Warranty: Goodale & Barbieri Company does not guarantee, warrant, either expressed or implied, any information supplied by the Seller. Buyer should rely on his own verification of this information as a part of their own due diligence. Copyright: We respect the intellectual property of others. If you believe that your work has been copied in a way that constitutes copyright infringement please contact us immediately.



Warranty: Goodale & Barbieri Company does not guarantee, warrant, either expressed or implied, any information supplied by the Seller. Buyer should rely on his own verification of this information as a part of their own due diligence. Copyright: We respect the intellectual property of others. If you believe that your work has been copied in a way that constitutes copyright infringement please contact us immediately.



Google

Imagery ©2023 , CNES / Airbus, Maxar Technologies, U.S. Geological Survey, USDA/FPAC/GEO

Warranty: Goodale & Barbieri Company does not guarantee, warrant, either expressed or implied, any information supplied by the Seller. Buyer should rely on his own verification of this information as a part of their own due diligence. Copyright: We respect the intellectual property of others. If you believe that your work has been copied in a way that constitutes copyright infringement please contact us immediately.

Goodale & Barbieri Company
818 West Riverside #300
Spokane, WA 99201
www.g-b.com

Clayton McFarland | Commercial & Leasing Manager
509.344.4929 // cmcfarland@g-b.com