

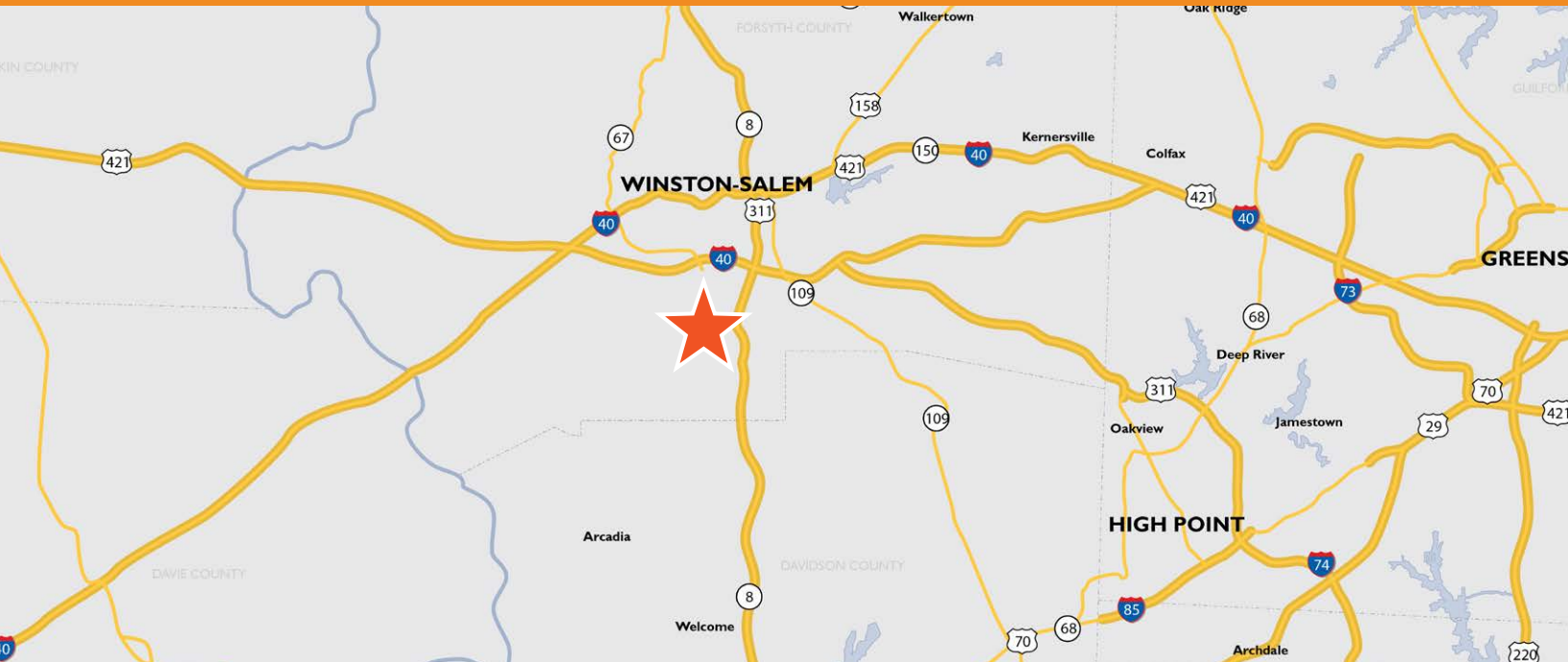


PETERS CREEK LAND
WINSTON-SALEM, NORTH CAROLINA

LAND FOR SALE
±17.76 ACRES

PETERS CREEK

LAND FOR SALE



PROPERTY OVERVIEW

Foundry Commercial is pleased to present approximately 17.76 gross acres of land located in the Peters Creek area of Winston-Salem, North Carolina approximately 4.75 miles south of downtown. The property sits in the Town of Winston-Salem zoning jurisdiction and has a Residential Single Family (RS9) zoning designation. Public utilities are in close proximity to the property. The proposed land use plan recommends intermediate density residential development ranging from 8-18 dwelling units per acre.

PROPERTY FEATURES

LAND SIZE	±17.76 acres
PIN #	6823-53-8779.00
ZONING	RS9
UTILITIES	Water and sewer in close proximity

SITE DEMOGRAPHICS	1 MILE	3 MILES	5 MILES
2018 EST POPULATION	7,060	47,069	117,376
2023 EST POPULATION	7,393	49,547	123,158
2018 EST AVG HH INCOME	\$65,306	\$62,053	\$65,677

SITE TRAFFIC COUNTS

PETERS CREEK PARKWAY	25,000 VPD
STAFFORD VILLAGE BLVD	10,000 VPD
W CLEMMONSVILLE RD	14,000 VPD

For more information, please contact:

TOMMY TRIMBLE
 Vice President / Broker
 704.414.7460
 tommy.trimble@foundrycommercial.com

FOUNDRY
 COMMERCIAL

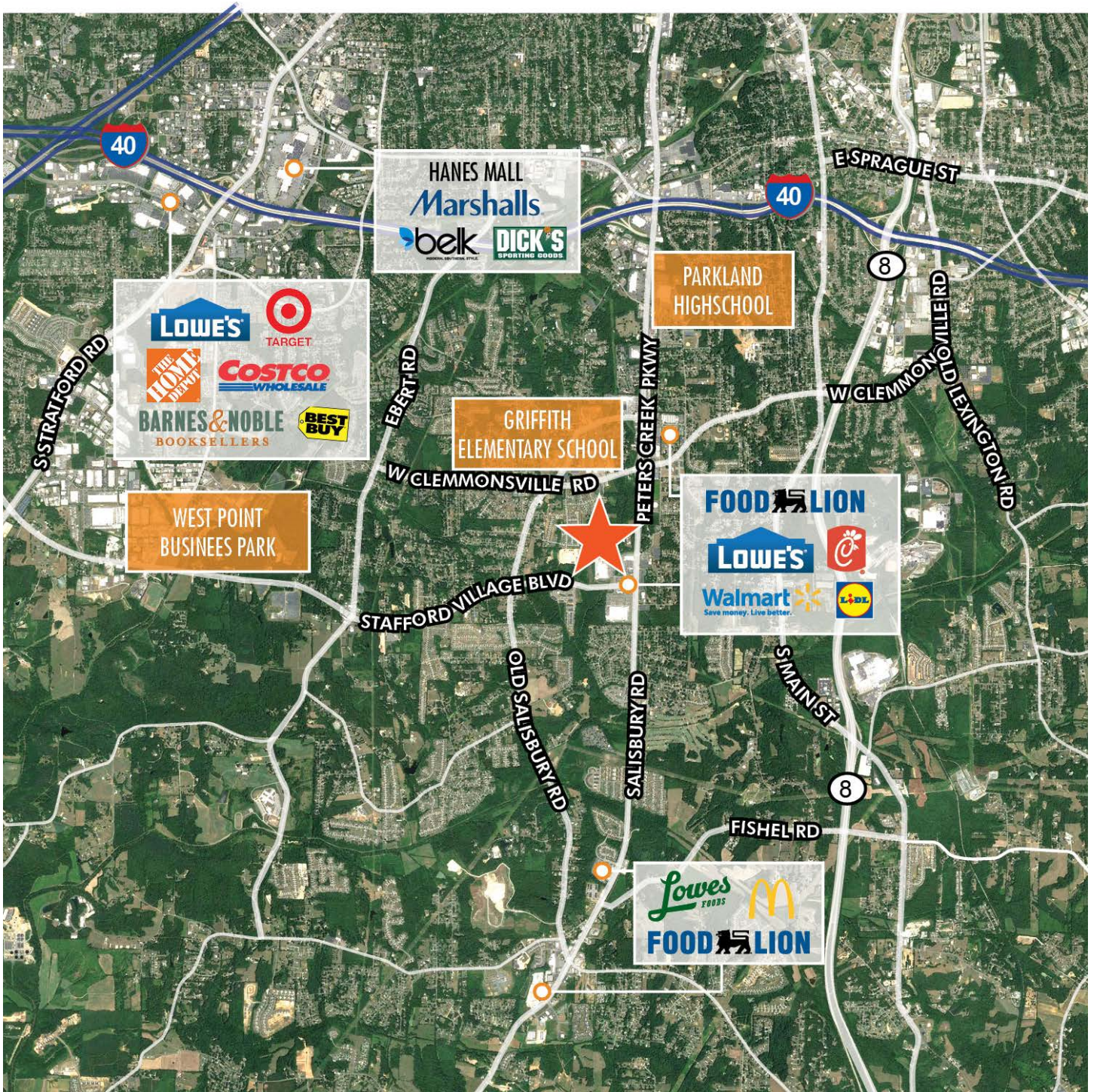
121 W. Trade Street, Suite 2500
 Charlotte, NC 28202

foundrycommercial.com

Although the information contained herein was provided by sources believed to be reliable, Foundry Commercial makes no representation, expressed or implied, as to its accuracy and said information is subject to errors, omissions or changes.

PETERS CREEK LAND FOR SALE

LOCATION



For more information, please contact:

TOMMY TRIMBLE
Vice President / Broker
704.414.7460
tommy.trimble@foundrycommercial.com

Although the information contained herein was provided by sources believed to be reliable, Foundry Commercial makes no representation, expressed or implied, as to its accuracy and said information is subject to errors, omissions or changes.

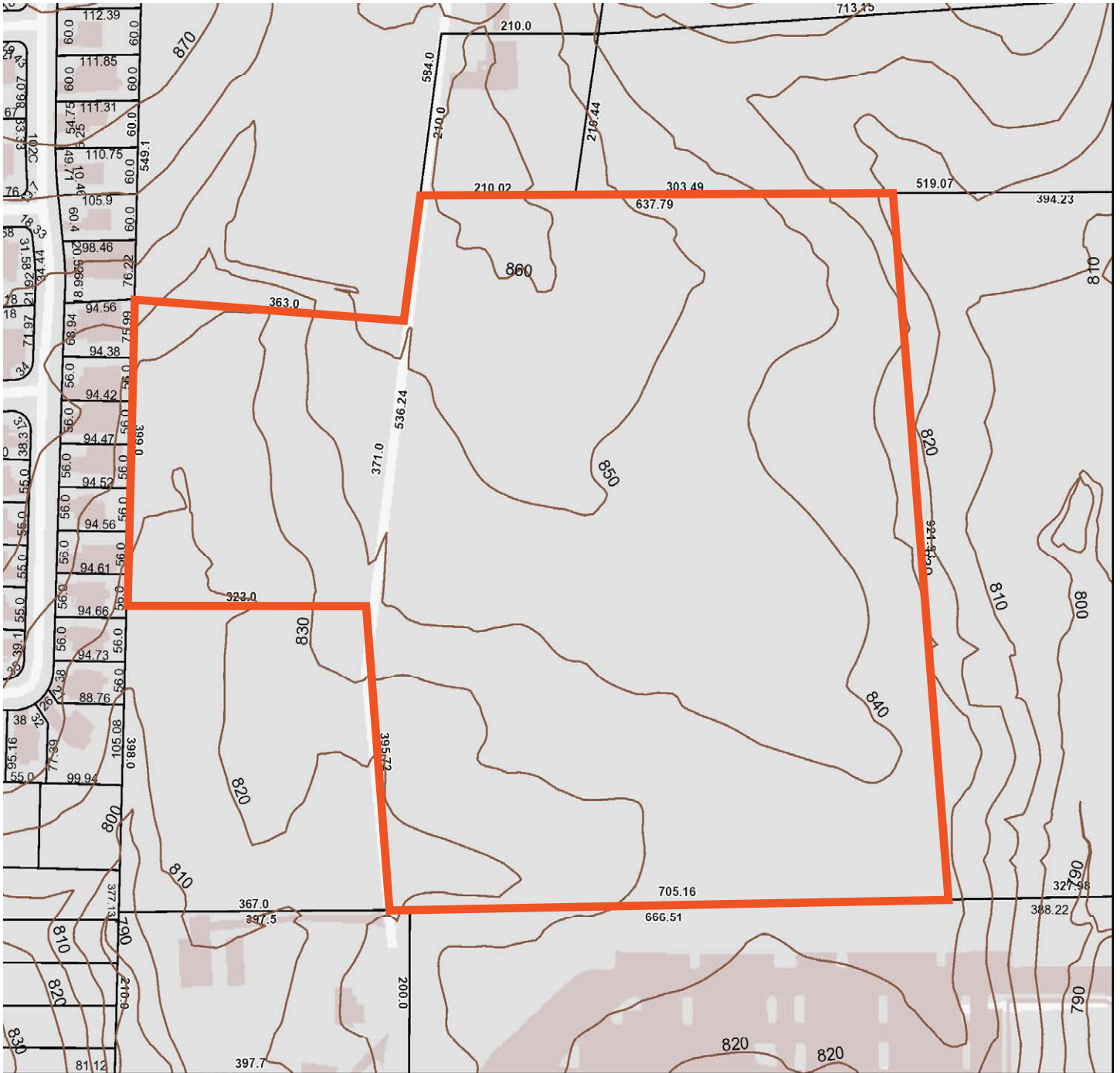
FOUNDRY
COMMERCIAL

121 W. Trade Street, Suite 2500
Charlotte, NC 28202

foundrycommercial.com

PETERS CREEK LAND FOR SALE

TAX MAP



For more information, please contact:

TOMMY TRIMBLE

Vice President / Broker

704.414.7460

tommy.trimble@foundrycommercial.com

FOUNDRY
COMMERCIAL

121 W. Trade Street, Suite 2500
Charlotte, NC 28202

foundrycommercial.com

Although the information contained herein was provided by sources believed to be reliable, Foundry Commercial makes no representation, expressed or implied, as to its accuracy and said information is subject to errors, omissions or changes.