

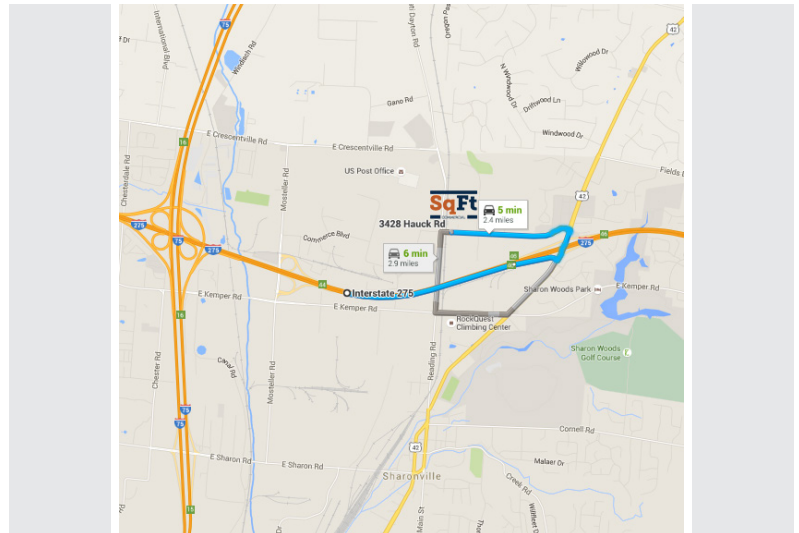


**3428 HAUCK RD, BUILDING E, SUITE E, CINCINNATI, OH 45241**  
**AVAILABLE FOR LEASE**

**PROPERTY DETAILS**

**3,000 SqFt (30'x100')** **1,230 Office SqFt(30'x41')**

<b>Warehouse SqFt:</b>	1,770 (30' x 59')
<b>Clear Height:</b>	14' +
<b>Construction:</b>	Metal
<b>Lighting:</b>	Fluorescent
<b>Column Spacing:</b>	Clear span
<b>Dock Doors:</b>	None
<b>Drive-in Door:</b>	One (1) - 10' x 10'
<b>Sprinkler:</b>	Wet
<b>Electric:</b>	208 volt, 3-phase, 200 amps
<b>Roof:</b>	Metal - fully insulated
<b>Truck Court:</b>	Heavy duty asphalt
<b>Parking Lot:</b>	Common area parking
<b>Restrooms:</b>	Two (2)



**PROPERTY HIGHLIGHTS**

- End cap space
- Located within minutes to
- On site management/ownership
- I-75/I-275 in Sharonville

**Rod MacEachen**  
 (513) 675-5764  
 Rod@SqFtCommercial.com

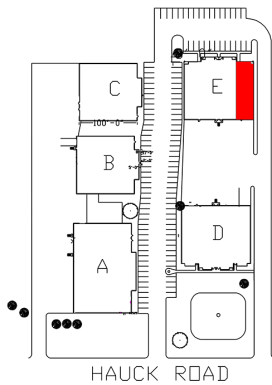
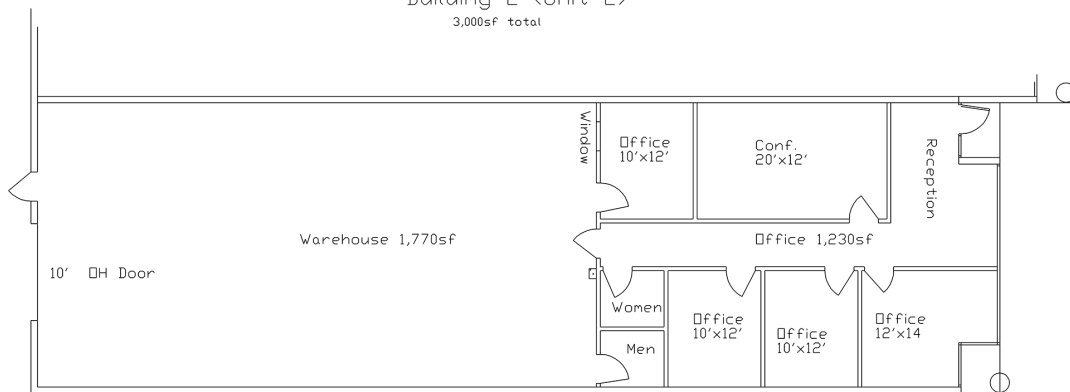
**Roddy MacEachen**  
 (513) 739-3985  
 Roddy@SqFtCommercial.com

3428 HAUCK RD, BUILDING E, SUITE E, CINCINNATI, OH 45241



## AERIAL & FLOOR PLAN

Exhibit 1  
3478 Hauck Road  
Building E (Unit E)  
3,000sf total



© 2016 SqFt Commercial. This information has been obtained from sources believed reliable. We have not verified it and make no guarantee, warranty or representation about it. Any projections, opinions, assumptions or estimates used are for example only and do not represent the current or future performance of the property. You and your advisors should conduct a careful, independent investigation of the property to determine to your satisfaction the suitability of the property for your needs.

**Rod MacEachen**  
(513) 675-5764  
Rod@SqFtCommercial.com

**Roddy MacEachen**  
(513) 739-3985  
Roddy@SqFtCommercial.com