



Class A Logistics Building Ready for Immediate Occupancy

- 303,006 sf Class A logistics building
- 36' clear height
- 76 trailer parking
- 302 car parks
- Located less than 1 mile north of I-4 (exit 10) on Mango Road. The property has convenient access to the nearby interchange at I-75



Click Here to View
Property Video

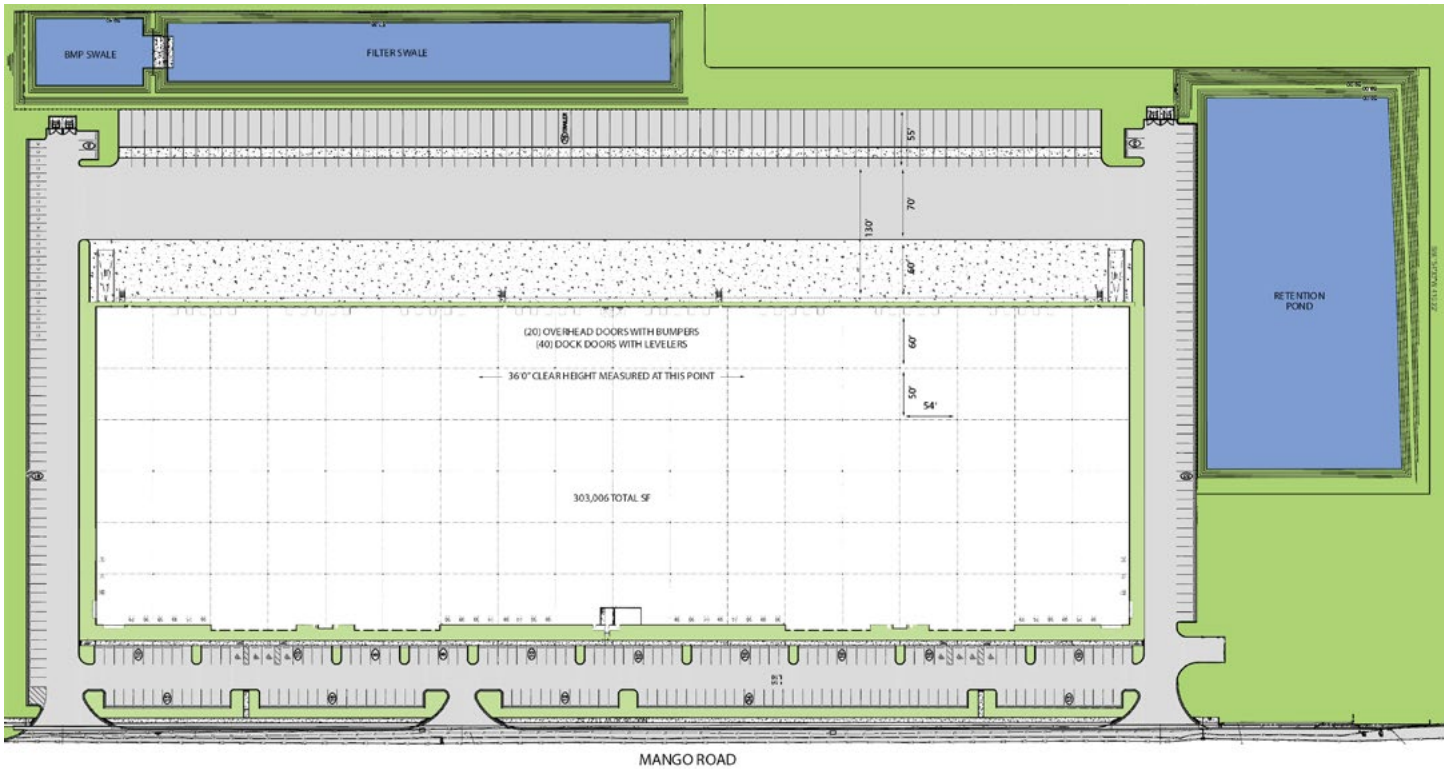
Get more information

Clay Witherspoon
Managing Director | Principal
+1 813 444 0626
clay.witherspoon@avisonyoung.com

avisonyoung.com

Building Specifications

Mango I-4 Logistics Center
6337 Mango Road
Seffner, FL 35584



Space depth	310'
Clear height	36'
Column spacing	54' x 50' with 60' speed bay
Loading	Rear load
Power	Three phases 480V 2,400 amps
Lighting	LEDs 20 foot candles based on open plan
Parking	302 car parks
Doors	62 (9'x10') overhead doors plus 2 (12'x14') doors with ramps

Slab	6" thick
Fire sprinklers	ESFR
Trailer storage	76 spaces
Truck court	130' deep with 55' trailer spaces
Truck apron	60' concrete
Windows	Clerestory per bay
Zoning	PD
Utilities	Fiber & Phone - Frontier & Spectrum Electric - TECO Water & Sewer - Hillsborough County

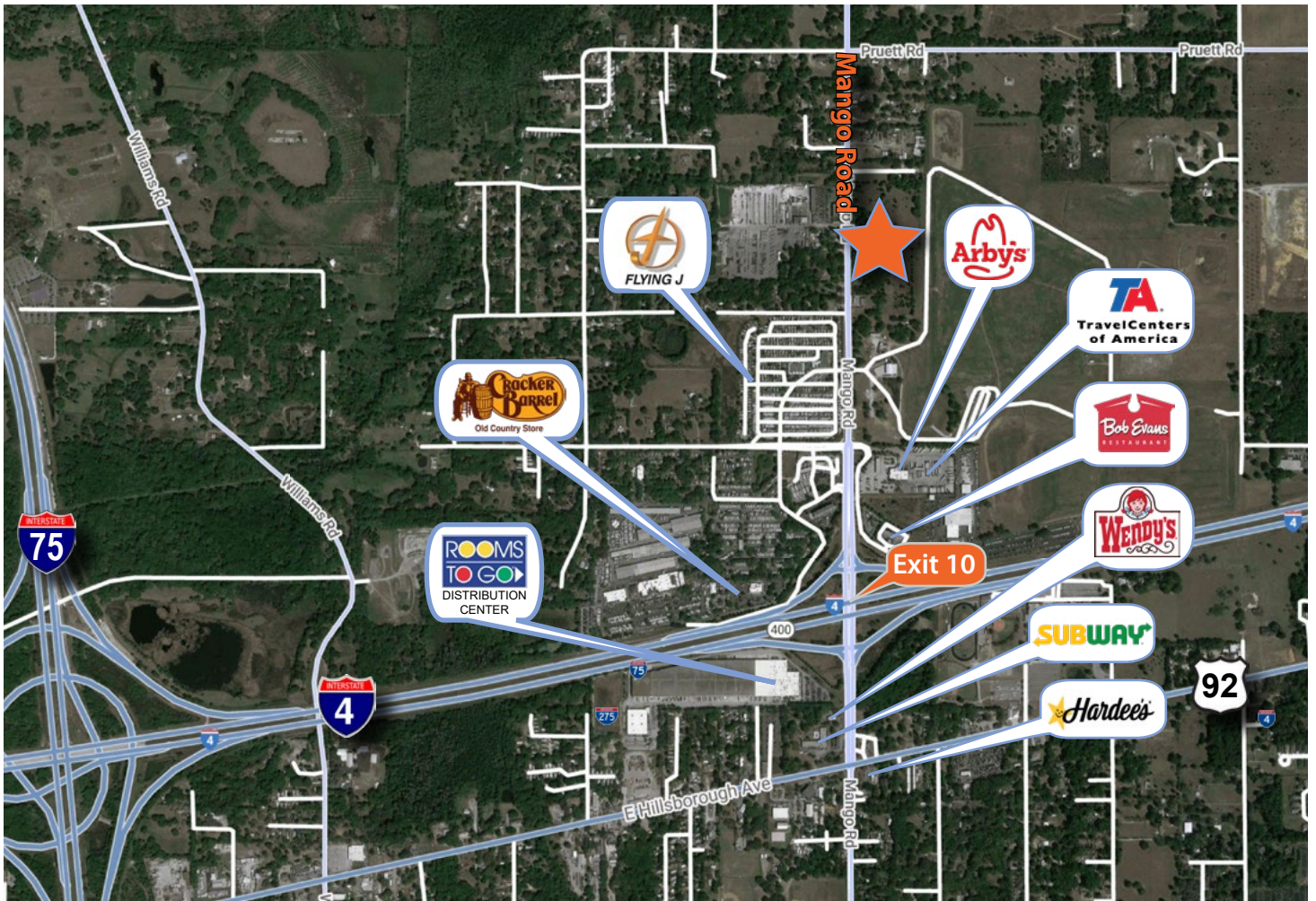
Get more information

Clay Witherspoon
Managing Director | Principal
+1 813 444 0626

**AVISON
YOUNG**

Location Aerial

Mango I-4 Logistics Center
6337 Mango Road
Seffner, FL 35584



Prime Location

- 8.1 million people within 100 miles
- 20.8 million people within 250 miles
- Less than 1 mile from Interstate 4
- 2 miles from Interstate 75

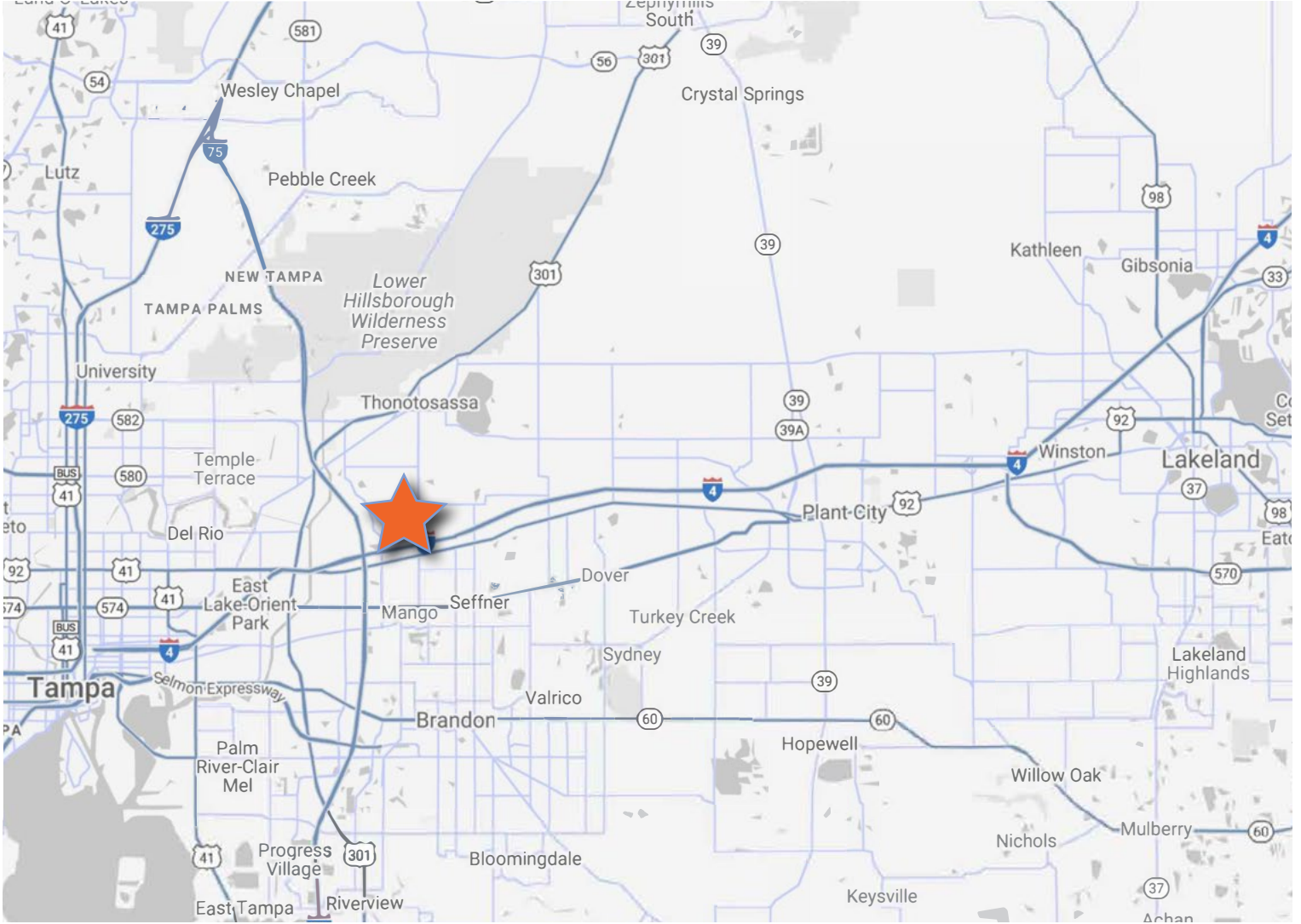
**Get more
information**

Clay Witherspoon
Managing Director | Principal
+1 813 444 0626

**AVISON
YOUNG**

Location Map

Mango I-4 Logistics Center
6337 Mango Road
Seffner, FL 35584



**Get more
information**

Clay Witherspoon
Managing Director | Principal
+1 813 444 0626

**AVISON
YOUNG**