



For Sale

+/- 6,000 SF beautifully renovated office building

- Located in the heart of Northfield
- 28 total parking spaces in repaved lot (possible to increase to 31 spaces)
- Ideal property for real estate brokerage, wealth management, law firm, medical practice, or similar use
- Zoning: O-P (professional office)
- Excellent signage opportunity on Tilton Road
- Recently renovated: completed Spring 2017
 - Gut renovation – new mechanicals and sheetrock
 - New Andersen windows, skylights and doors
 - New roof
 - New HVAC – gas heat
 - HardiePlank cement board siding
 - New LED lighting
 - Spray foam insulation

**1622 Tilton Road
Northfield, NJ**

Rick Widerman

+1 856 324 5301

rick.widerman@am.jll.com

Joe Carroll

+1 215 399 1809

joe.carroll@am.jll.com



Ample parking - 28 spaces currently - 31 possible



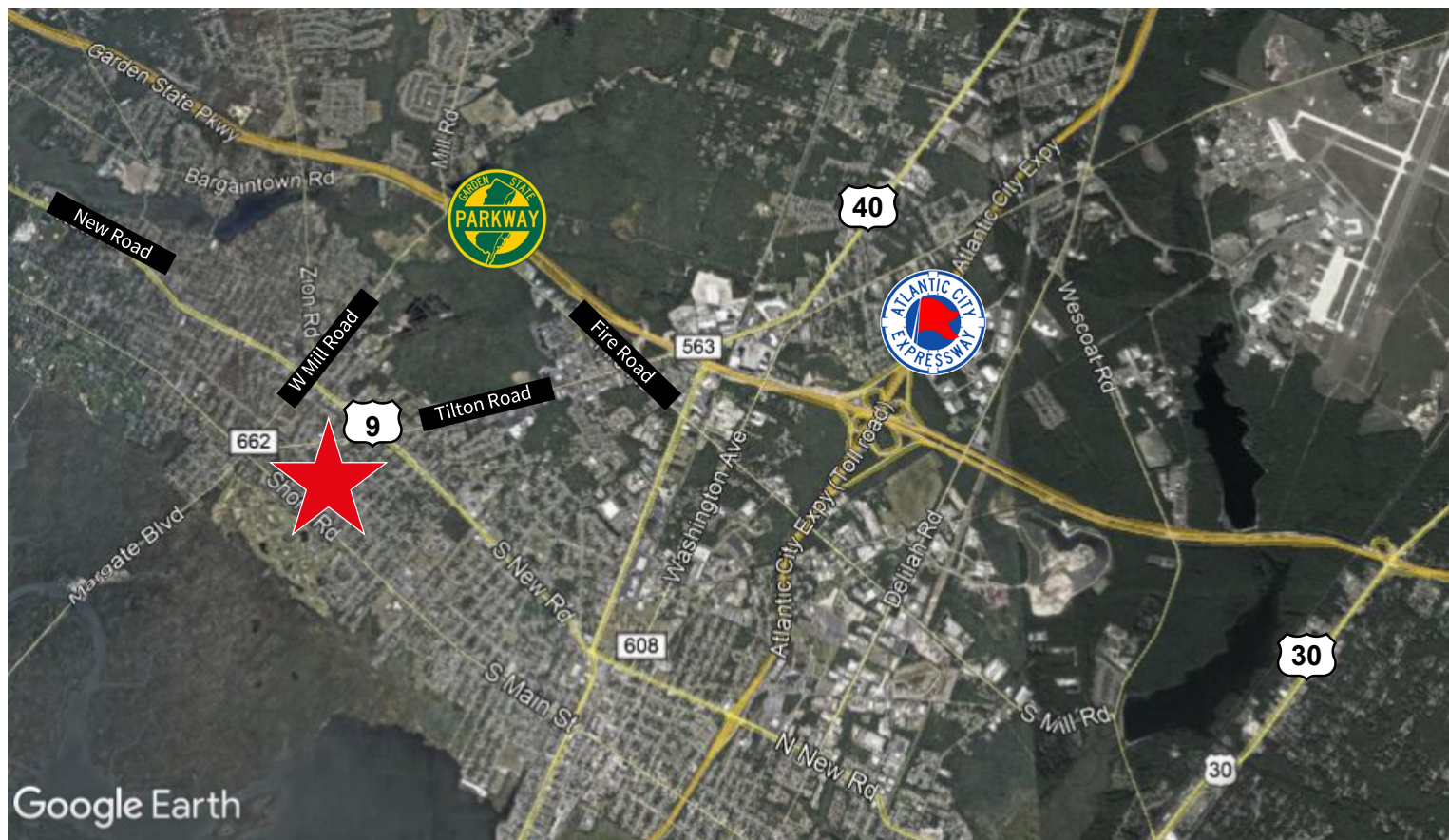
Glass in offices, skylights and LED lighting create a light and bright working environment



Newly renovated interior – kitchen and two bathrooms on 2nd floor



Proximity to major roadways



Conveniently located in the heart of Northfield

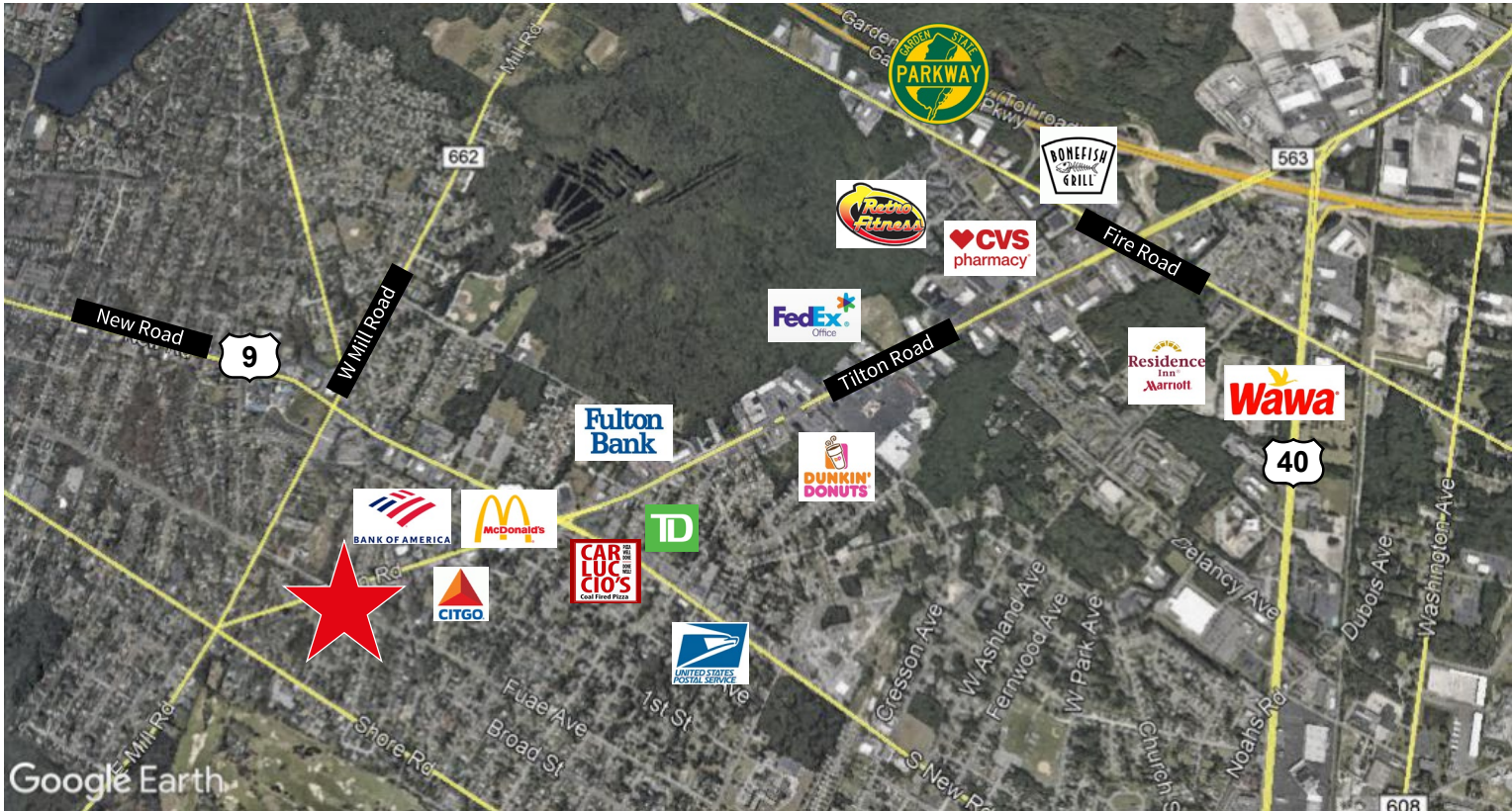
~2 miles from Garden State Parkway

~3 miles from Atlantic City Expressway

~6 miles from Atlantic City International Airport

~4 miles to shore points

Area amenities



1622 Tilton Road

Northfield, NJ

JLL | Jones Lang LaSalle
220 Lake Drive East, Suite 102
Cherry Hill, NJ 08002
+ 1 856 324 5300



Disclaimer
Although information has been obtained from sources deemed reliable, Owner, Jones Lang LaSalle, and/or their representatives, brokers or agents make no guarantees as to the accuracy of the information contained herein, and offer the Property without express or implied warranties of any kind. The Property may be withdrawn without notice. If the recipient of this information has signed a confidentiality agreement regarding this matter, this information is subject to the terms of that agreement. ©2019. Jones Lang LaSalle. All rights reserved.

