

Worship/Education Facility for SALE | ±8,254 Sq. Ft.

5850 W Northview Avenue | Glendale, AZ 85301

Reduced!

~~\$995,000~~
\$895,000



BRAND NEW UPPER & LOWER FLAT ROOFS • SEVERAL NEW HVAC UNITS UNDER WARRANTY • NEW EXTERIOR STUCCO & PAINT, AND LOTS MORE!

Presented by



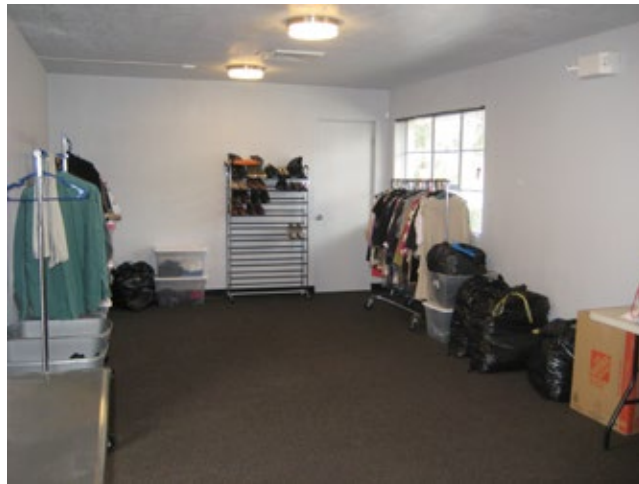
John Quatrini
Associate Broker
C 602.859.0506
john@shellcommercial.com



Suzanne Enright
Senior Associate
C 602.471.2981
suzanne@shellcommercial.com

Shell Commercial Investment Real Estate
16410 N 91st Street | Suite 112 | Scottsdale, Arizona 85260
O 480.443.3992 F 480.443.3680
www.shellcommercial.com

 **SHELL**
Commercial Investment Real Estate
480.443.3992





Features

Property Description

- ±8,254 Sq. Ft. Freestanding Building
- Built in 1973

December 2018 Upgrades:

Exterior

- New upper & lower flat roofs
- New guttering, downspouts & fascia
- New exterior stucco & paint
- Majority of exterior light fixtures replaced
- Several new HVAC units

Interior

- Majority of rooms freshly painted, new light fixtures, new window blinds, new carpet

- Sanctuary Seats 150 (actual)
- Pristine Gymnasium Seats 200 (actual). Potential Fire Code Occupancy: 277
- Secure Spacious Courtyard with Outdoor Seating
- Land Area With ±0.73 Net Acres
- Reception Area | Two (2) Offices | Seven (7) Classrooms
- Kitchen | Three (3) Restrooms | Storage Closets
- Abundant Private & Public Parking
- Paved Parking Lot Completed October 2017. Includes surrounding block walls newly painted. Granite landscaping for easy maintenance.

Additional Details

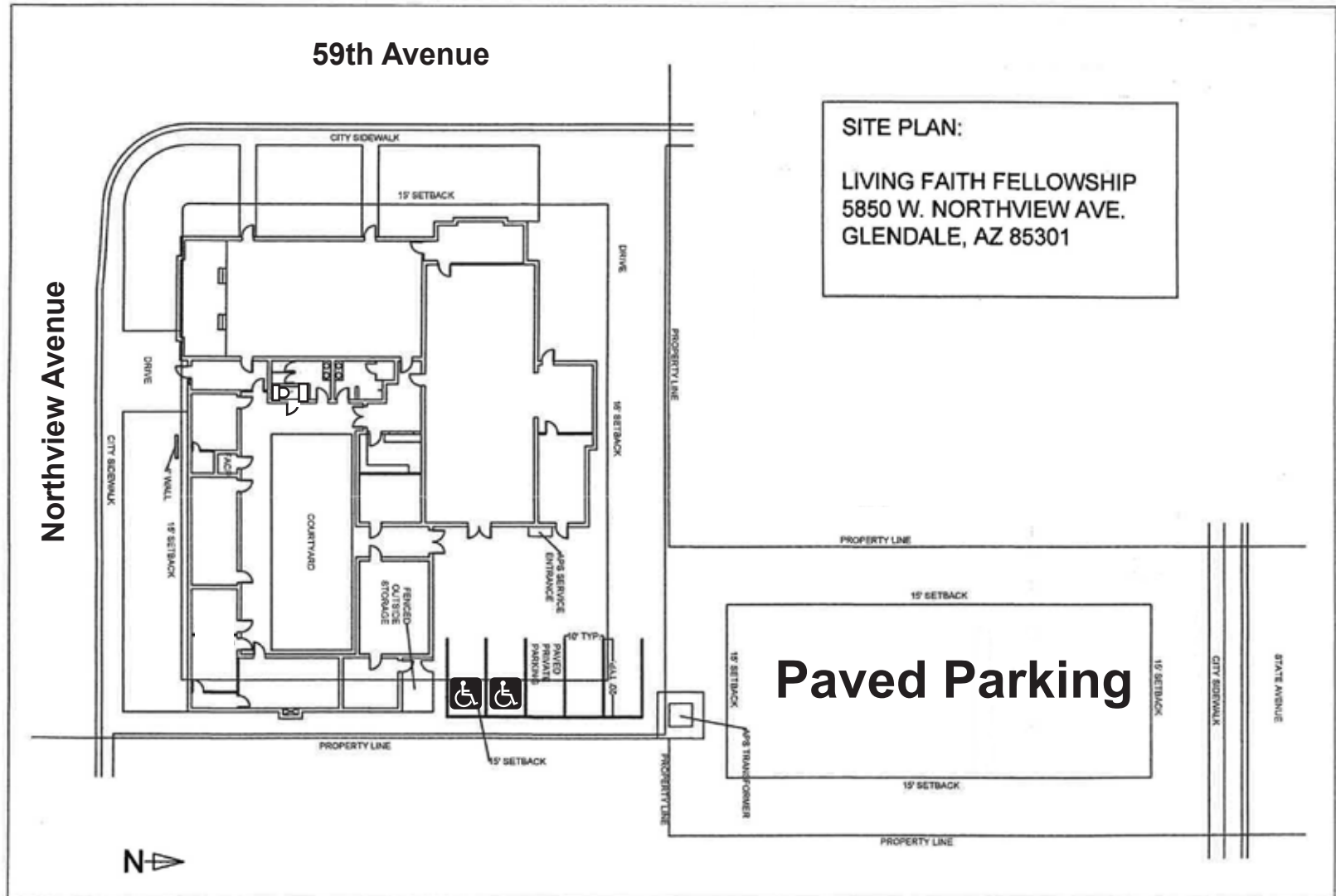
- Parcel Number: 147-23-034A, 026 (Maricopa)
- Zoning: R-2, City of Glendale
- Raised Seam Metal Lifetime Roof

Utilities:

- Water & Sewer: City of Glendale
- Electricity: Arizona Public Service (APS)
- Gas: Southwest Gas
- Telephone: Century Link Communications

Floor Plan/Site Plan

5850 W Northview Avenue | Glendale, AZ 85301



NOT TO SCALE

All information furnished regarding property for sale, rental or financing is from sources deemed reliable, but no warranty or representation is made to the accuracy thereof and same is submitted to errors, omissions, change of price, rental or other conditions, prior to sale, lease or financing or withdrawal without notice. No liability of any kind is to be imposed on the broker herein. This information has been secured from sources deemed reliable, however, we make no warranties as to its accuracy.

Location Map

5850 W Northview Avenue | Glendale, AZ 85301



NOT TO SCALE

All information furnished regarding property for sale, rental or financing is from sources deemed reliable, but no warranty or representation is made to the accuracy thereof and same is submitted to errors, omissions, change of price, rental or other conditions, prior to sale, lease or financing or withdrawal without notice. No liability of any kind is to be imposed on the broker herein. This information has been secured from sources deemed reliable, however, we make no warranties as to its accuracy.

Parking

