

FOR SUBLEASE

PARKLANDS NORTH CREEK

BUILDING A

11724 NE 195TH STREET

Bothell, WA 98011



SUBLEASE INFORMATION

AVAILABLE JANUARY 1, 2019

- + Available Space: Floor 1
- + Available Square Feet: 32,829 RSF
- + Master Lease Expiration Date: 12/31/2020
Longer term available direct through landlord
- + Asking Rate: Negotiable



www.cbre.us/bellevue

CBRE

FOR SUBLEASE **PARKLANDS NORTH CREEK**



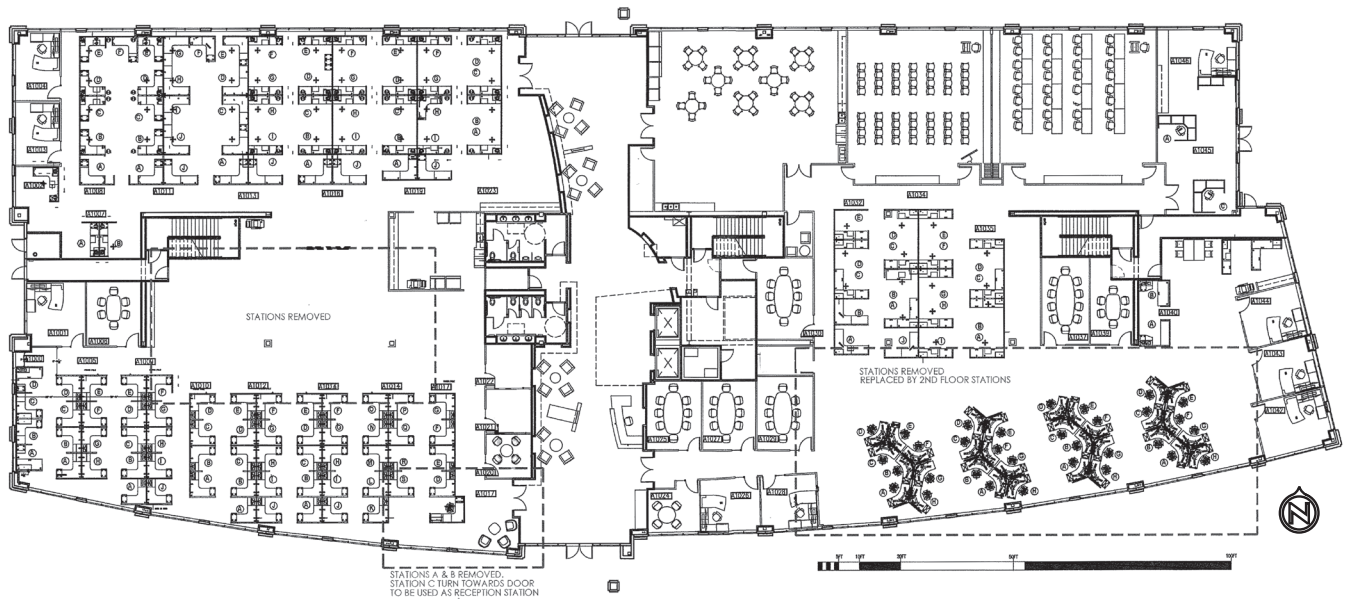
PROPERTY HIGHLIGHTS

- + Plug & Play Opportunity – FF&E available
- + Immediate access to I-405 via NE 195th Street
- + Adjacent to North Creek Trail
- + Walking distance to YMCA, The Village at Beardslee Crossing, playfields, hotels and daycare providers
- + Daily food truck service to the office park
- + Abundant amenities nearby
- + Join corporate neighbors Google, PSE, Winshuttle, AT&T, Seattle Times and UW Bothell
- + 4/1,000 RSF parking ratio



FLOOR PLAN

1ST FLOOR | ±32,829 RSF | AVAILABLE JANUARY 1, 2019



FOR SUBLEASE PARKLANDS NORTH CREEK

BUILDING A
11724 NE 195TH STREET
Bothell, WA 98011



CONTACT US

JEFF JOCHUMS

Senior Vice President
+1 425 462 6971
jeff.jochums@cbre.com

BRIAN BIEGE

Senior Vice President
+1 425 462 6914
brian.biege@cbre.com

CBRE, Inc.
929 108th Avenue NE
Suite 700
Bellevue, WA 98004

© 2018 CBRE, Inc. All rights reserved. This information has been obtained from sources believed reliable, but has not been verified for accuracy or completeness. You should conduct a careful, independent investigation of the property and verify all information. Any reliance on this information is solely at your own risk. CBRE and the CBRE logo are service marks of CBRE, Inc. All other marks displayed on this document are the property of their respective owners. Photos herein are the property of their respective owners. Use of these images without the express written consent of the owner is prohibited. JG 10-9-18

www.cbre.us/bellevue

CBRE