

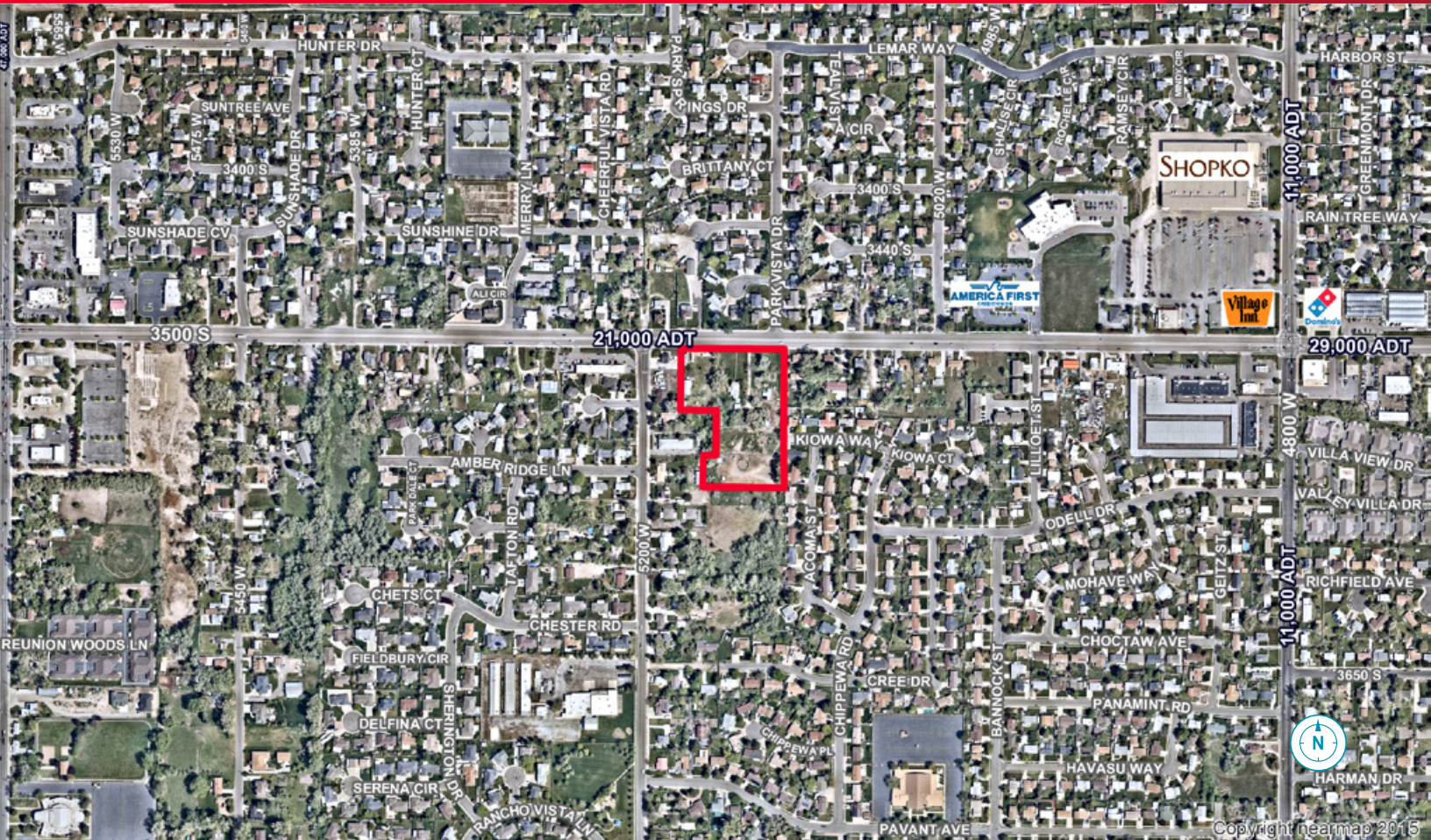


**CUSHMAN &
WAKEFIELD**

FOR SALE

5143 West 3500 South

West Valley City, Utah 84120



Property Highlights

- Prime redevelopment site
- 4.64 acres with assemblage potential
- Two curb-cuts on 3500 South
- Current zoning: agricultural
- Potential rezoning for commercial use

**4.64 Acre Redevelopment Site for Sale
with 3500 South Frontage**

Tyson Fowler

Associate

+1 801 303 5413

tyson.fowler@cushwake.com

170 South Main Street, Suite 1600

Salt Lake City, UT 84101

Main +1 801 322 2000

Fax +1 801 322 2040

cushmanwakefield.com

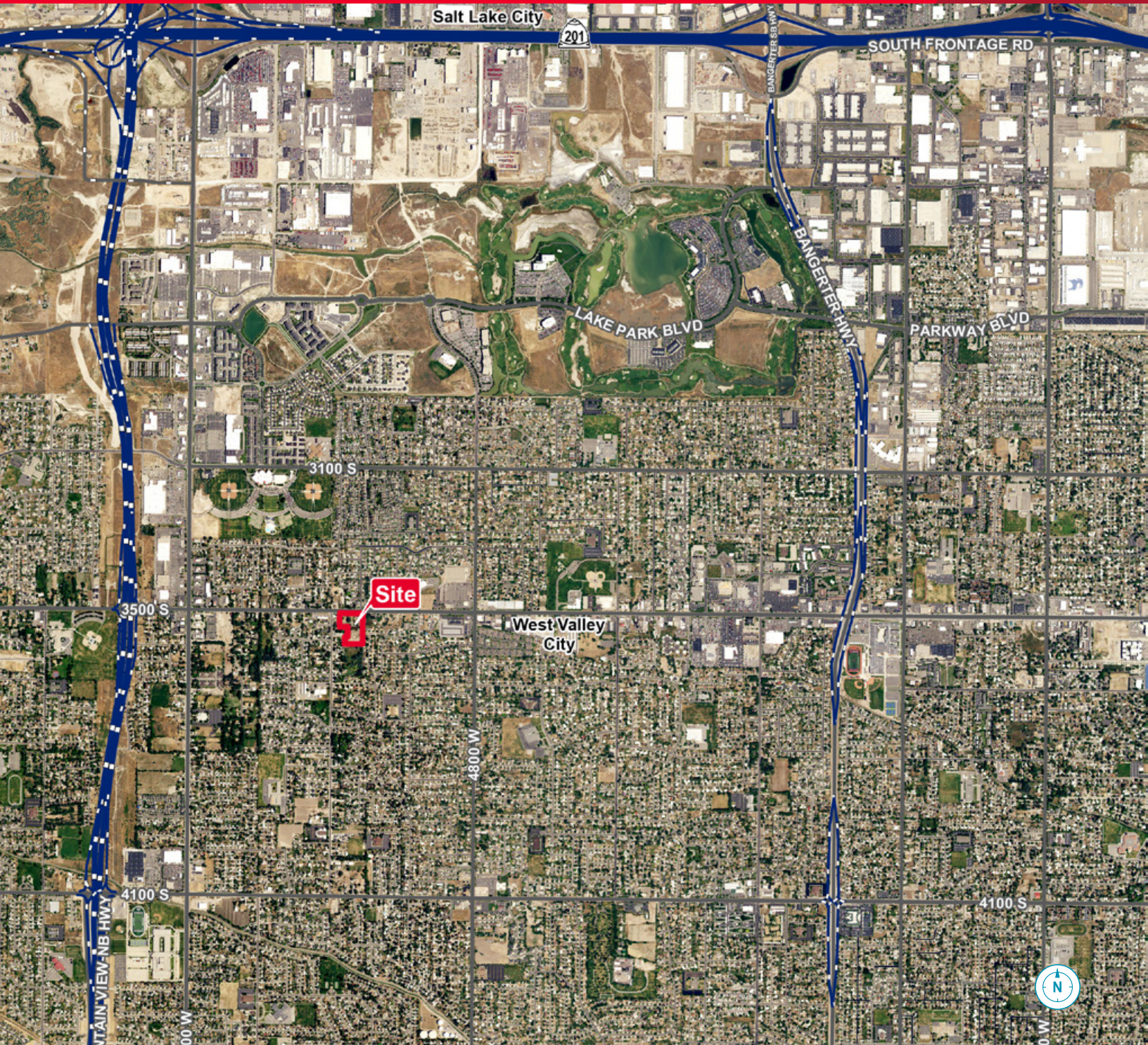


**CUSHMAN &
WAKEFIELD**

FOR SALE

5143 West 3500 South

West Valley City, Utah 84120



Tyson Fowler

Associate

+1 801 303 5413

tyson.fowler@cushwake.com

170 South Main Street, Suite 1600

Salt Lake City, UT 84101

Main +1 801 322 2000

Fax +1 801 322 2040

cushmanwakefield.com