



3702-3748 State Avenue
Kansas City, KS 66102

Tower Plaza Retail

Lease Rate: \$3.50-\$8.00/SF

Available Spaces:

Retail Use: 750/SF - 56,540/SF

Non-Retail Use: 674/SF - 13,000/SF

Zoning: C-1

Property Features:

Home to a strong mix of local and national retailers, Tower Plaza is the midtown KCK Location for visibility and traffic. Join CVS, Dollar General, McDonald's, Advanced Auto and Subway in this well established retail community.



Opes Commercial Real Estate

Northland Partners Commercial, LLC

5604 NE Antioch Rd., Gladstone, MO 64119

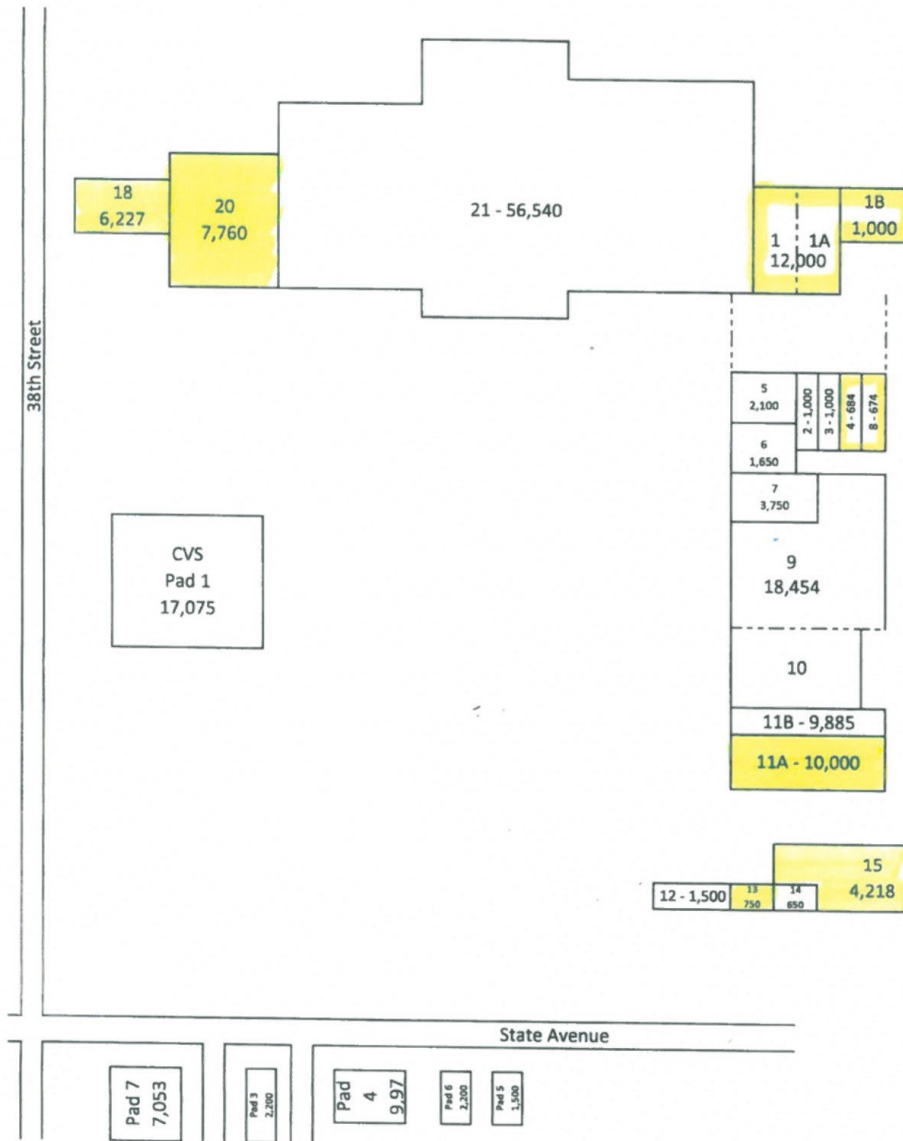
www.opescre.com

For more Information Contact

Cherise Sedlock

cherise@opescre.com

816-268-4447 Direct - 816-560-4450 Cell



Tower Plaza Shopping Center
182,246 sq ft

STREET #	UNIT	TENANT	AREA	
3740-3738	1 & 1A	Vacant	12,000	SF
	1B	Vacant	1,300	SF
3732	2	Vacant	684	SF
3730		Police Volunteers	1,000	SF
3728	4	Vacant	1,000	SF
3726	5	KC Mobile Phones	2,100	SF
3724	6	Latinoamerican	1,650	SF
3722	7	Spay and Neuter of KC	3,750	SF
3734	8	Vacant	684	SF
3720-3718	9&10	Adelante Thrift	18,454	SF
3716-A	11B	Dollar General	9,885	SF
3716-B	11A	Vacant	10,000	SF
3714	12	Subway	1,500	SF
3712	13	Diamond Cleaners	750	SF
3710	14	Liberty Tax	600	SF
3708	15	Chin Hills Grocery	4,218	SF
3704	16	H&R Block	1,000	SF
3748B	19	Tire & Wheel	6,227	SF
3748A	20	Vacant	7,760	SF
3748	21	Bunny's Beauty	56,741	SF

16 -1,000

STREET #	PAD	TENANT	AREA	
3750	1	CVS	17,075	SF
3725	3	McDonald's	2,200	SF
3653	4	Advanced Auto	9,975	SF
3651	5	Taco Bell	1,500	SF
3647	6	Wendy's	2,200	SF
3651	7	SPD Transfer	7,053	SF

Opes Commercial Real Estate

Northland Partners Commercial, LLC

5604 NE Antioch Rd., Gladstone, MO 64119

www.opescre.com

For more Information Contact

Cherise Sedlock

cherise@opescre.com

816-268-4447 Direct - 816-560-4450 Cell