

## Rare In City Storage Warehouse

370 W Ewing Street  
Seattle, WA

±14,040 SF Land

Parcel D on survey map

Zoned IG-1 U/45

**Structure 1:** ± 5,500 SF covered  
storage (150' x 36.5')

**Structure 2:** 1,350 SF covered  
storage (±45' x 30')

**Total:** 6,850 SF covered storage

Near Seattle Pacific University

Next to Burke Gilman Trail and  
Ship Canal

Existing lease on property

Can be combined with adjacent  
Gascoigne property for ±41,000  
SF land

Price: \$1,474,200 (\$105/SF)



### Location



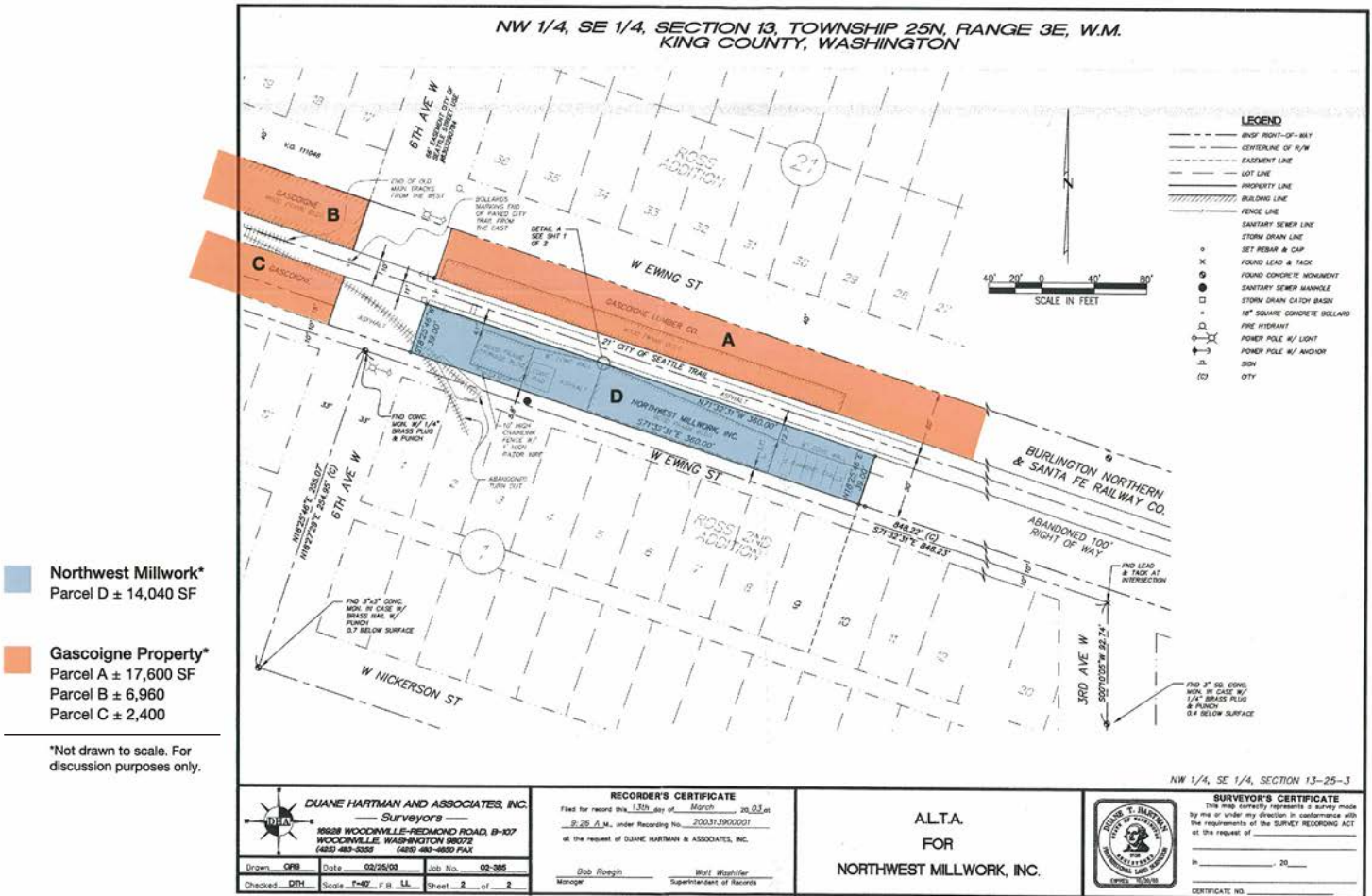
### Contact

**Ken Hirata**  
206.296.9625  
khirata@kiddermathews.com

**Corey Sollom**  
206.296.9620  
csollom@kiddermathews.com

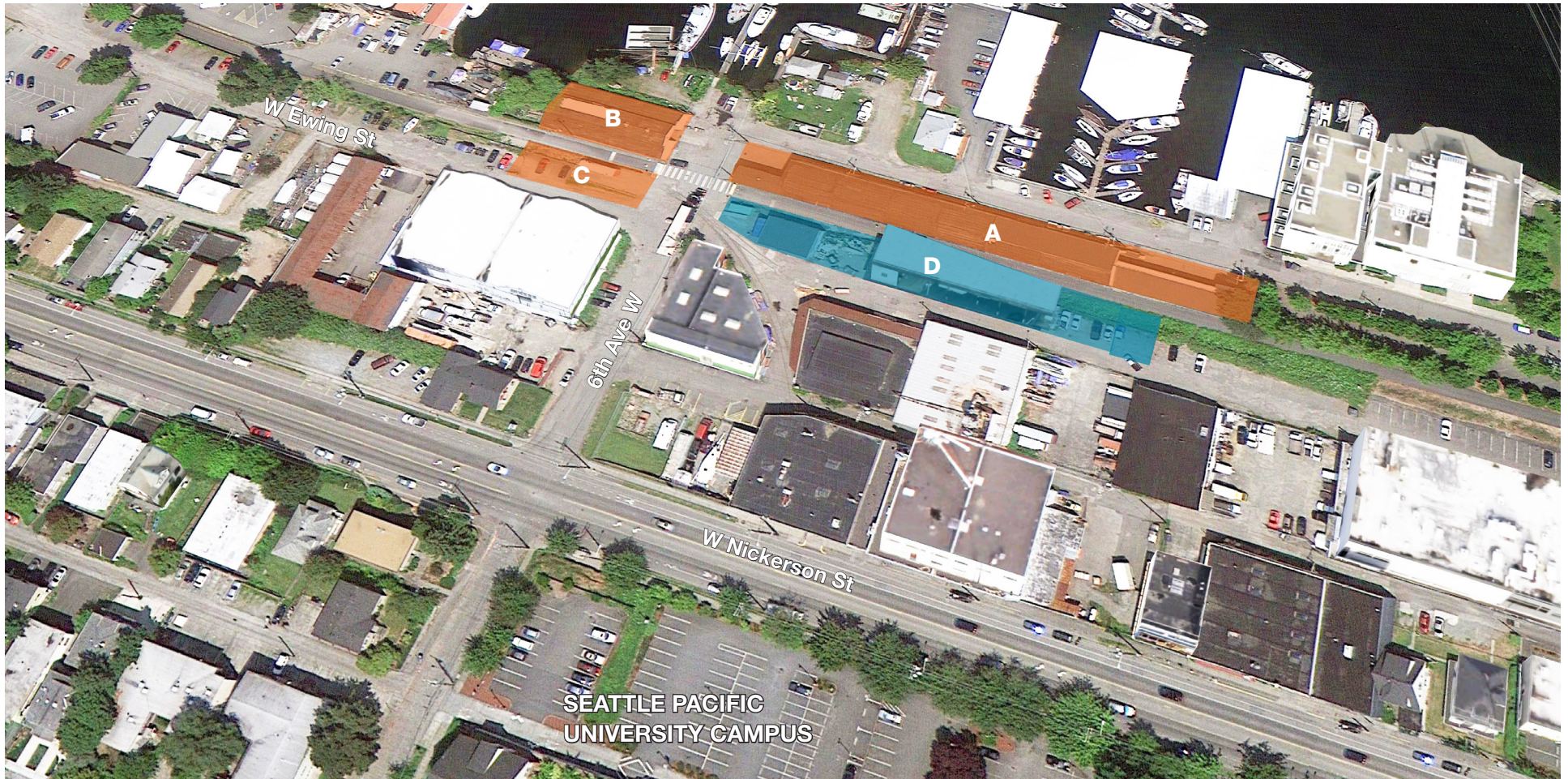
## 370 W Ewing Street

### PARCEL MAP



## Parcel Aerial

### GASCOIGNE & NORTHWEST MILLWORK / CARLSEN HOLDINGS, LLC PROPERTY SUMMERY



\*Not drawn to scale. For discussion purposes only.

## Contact

**Ken Hirata**  
206.296.9625  
khirata@kiddermathews.com

**Corey Sollom**  
206.296.9620  
csollom@kiddermathews.com

# King County iMap



The information included on this map has been compiled by King County staff from a variety of sources and is subject to change without notice. King County makes no representations or warranties, express or implied, as to accuracy, completeness, timeliness, or rights to the use of such information. This document is not intended for use as a survey product. King County shall not be liable for any general, special, indirect, incidental, or consequential damages including, but not limited to, lost revenues or lost profits resulting from the use or misuse of the information contained on this map. Any sale of this map or information on this map is prohibited except by written permission of King County.

Date: 7/23/2015

Notes:

