

3730 SINTON ROAD

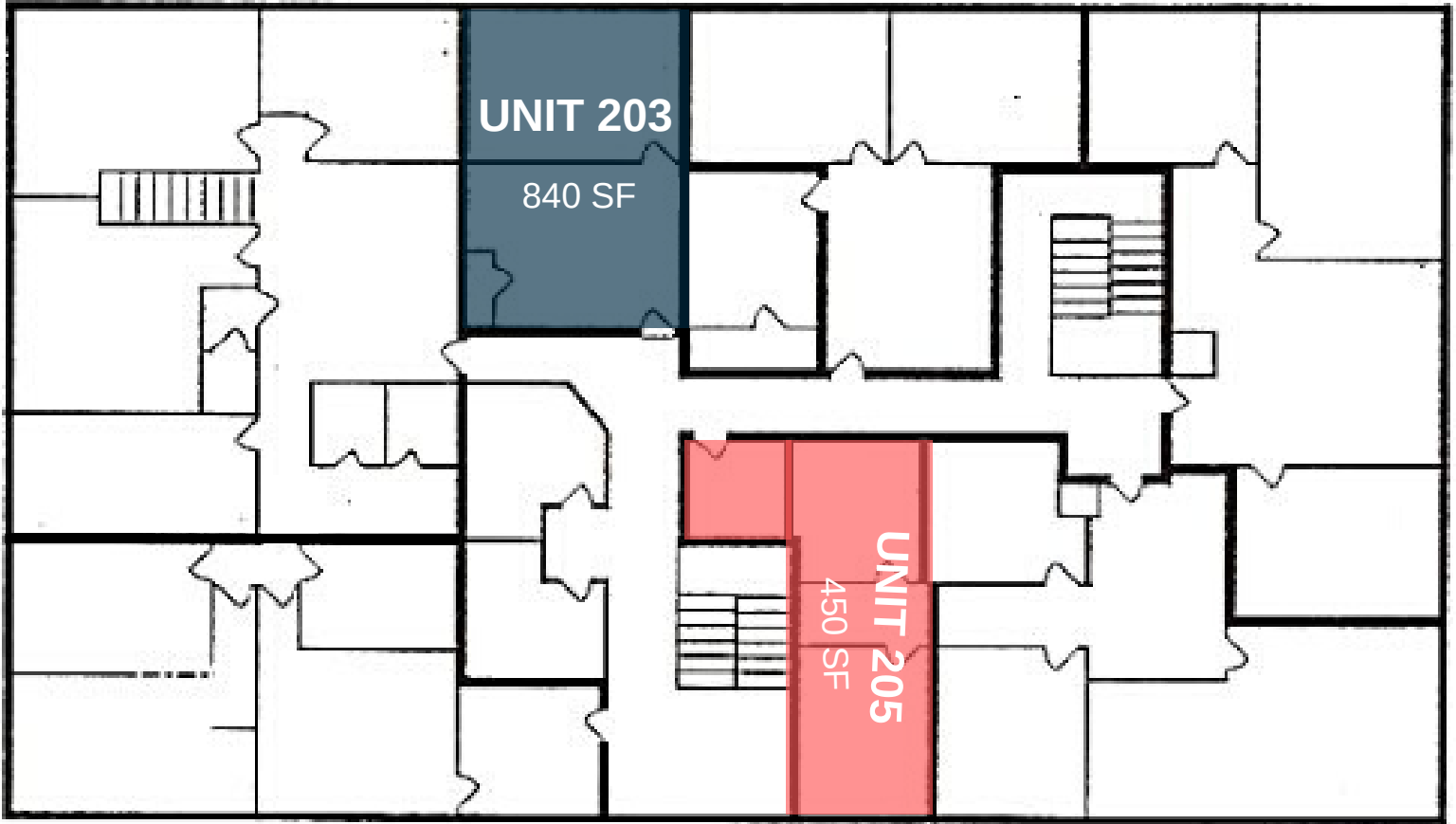
OFFICE SPACE
AVAILABLE
I-25 CORRIDOR



Danny Mientka | The Equity Group
719-639-7000

3730 SINTON ROAD

OFFICE SPACE
AVAILABLE
I-25 CORRIDOR



450, 840 SF Office Suites Available



Located on I-25 between Fillmore
and Garden of the Gods Road



Abundant Surface Parking

OTHER FEATURES

- Newly renovated common areas
- Glass atrium entrance
- Lobby tenant directory
- Windowed offices
- Common restrooms
- Flexible floor plans
- Private office entrances