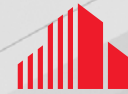


FOR LEASE

4136 E Commerce Way

Sacramento, CA



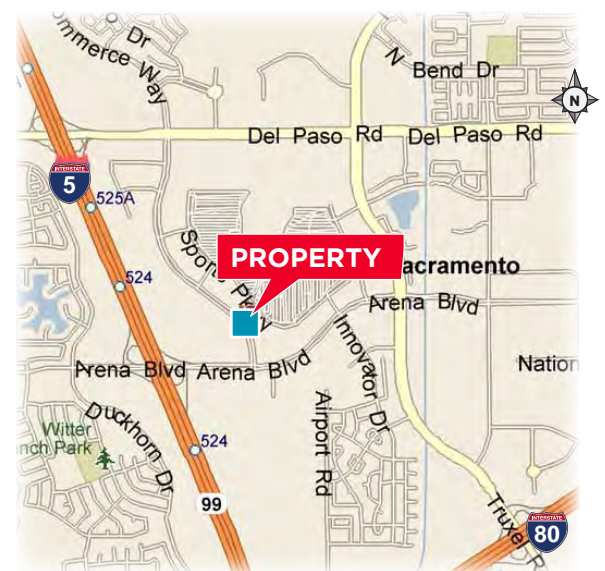
CUSHMAN &  
WAKEFIELD

±1,307 TO ±2,709 SF OFFICE SPACE AVAILABLE



## PROPERTY HIGHLIGHTS

- Office / Medical Space Available
- Building and Monument Signage
- Nearby Restaurants and Shopping
- Immediate access to Interstate 5 & Interstate 80
- Abundant Parking
- Zoned EC-40



**CHAD COOK**, MCR, SIOR, CCIM

Senior Director

+1 916 329 1562

chad.cook@cushwake.com

Lic #01711687

**ZACH MOSLE**, CCIM

Senior Associate

+1 916 329 1543

zach.mosle@cushwake.com

Lic #01924595

400 Capitol Mall, Suite 1800

Sacramento, CA 95814

T +1 916 288 4800

[cushmanwakefield.com](http://cushmanwakefield.com)

Cushman & Wakefield Copyright 2017. The information contained herein was lawfully obtained from sources we consider reliable. Cushman & Wakefield is not responsible and expressly disclaims all liability, for errors, omissions, prior sales, withdrawal from the market or change in price. Seller (or Lessor, as the case may be) and broker make no representation as to the environmental condition of the property and recommend Purchaser's (or Lessee's) independent investigation.

**FOR LEASE**  
**4136 E Commerce Way**  
Sacramento, CA

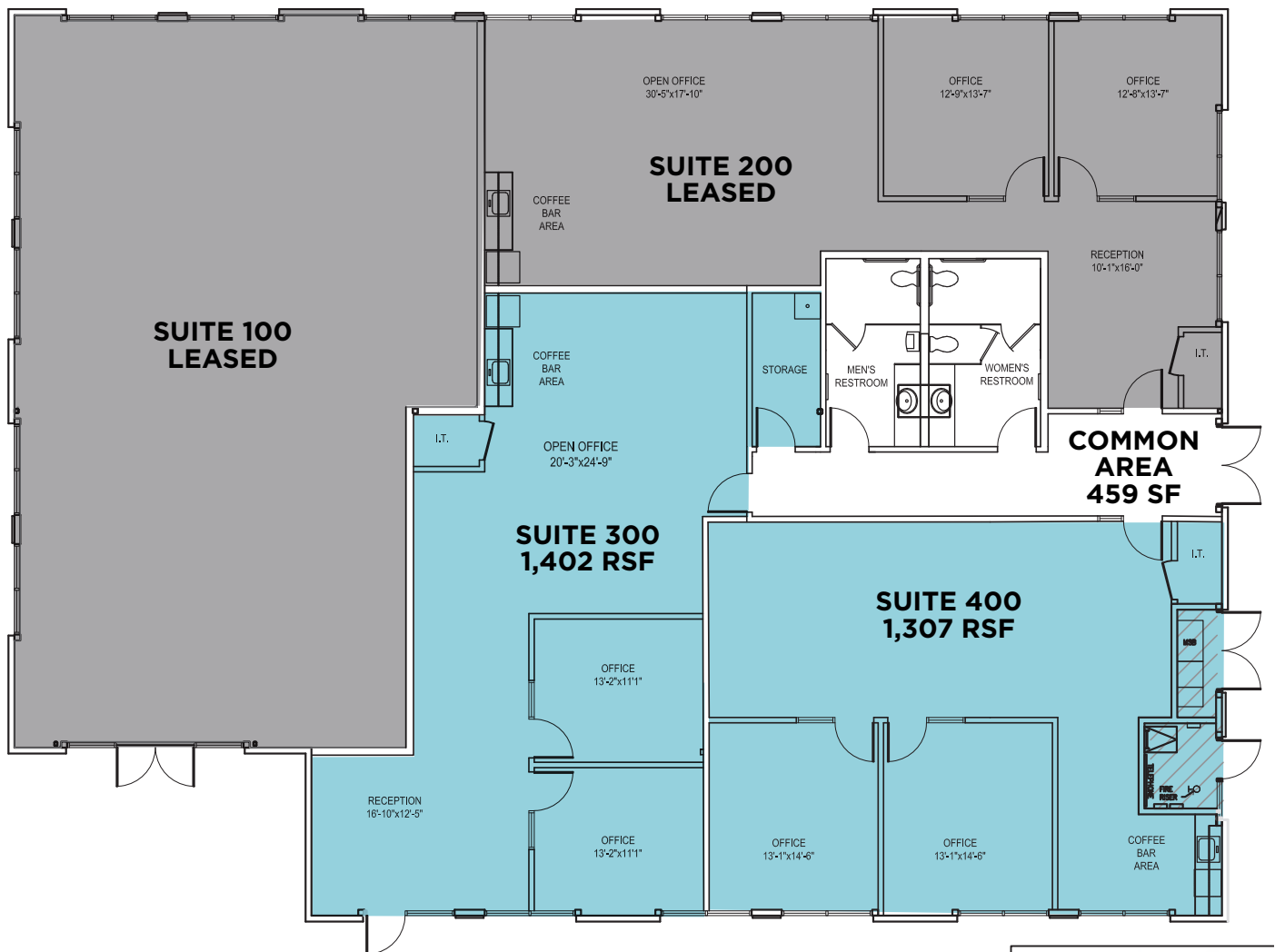


**±1,307 TO ±2,709 SF OFFICE SPACE AVAILABLE**

**FLOOR PLAN:**

**SUITE 300: ±1,402 RSF**  
**SUITE 400: ±1,307 RSF**

*\*Contiguous ±2,709 SF*



**CHAD COOK, MCR, SIOR, CCIM**  
Senior Director  
+1 916 329 1562  
chad.cook@cushwake.com  
Lic #01711687

**ZACH MOSLE, CCIM**  
Senior Associate  
+1 916 329 1543  
zach.mosle@cushwake.com  
Lic #01924595

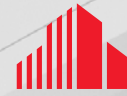
400 Capitol Mall, Suite 1800  
Sacramento, CA 95814  
T +1 916 288 4800  
**cushmanwakefield.com**

Cushman & Wakefield Copyright 2017. The information contained herein was lawfully obtained from sources we consider reliable. Cushman & Wakefield is not responsible and expressly disclaims all liability, for errors, omissions, prior sales, withdrawal from the market or change in price. Seller (or Lessor, as the case may be) and broker make no representation as to the environmental condition of the property and recommend Purchaser's (or Lessee's) independent investigation.

FOR LEASE

# 4136 E Commerce Way

Sacramento, CA

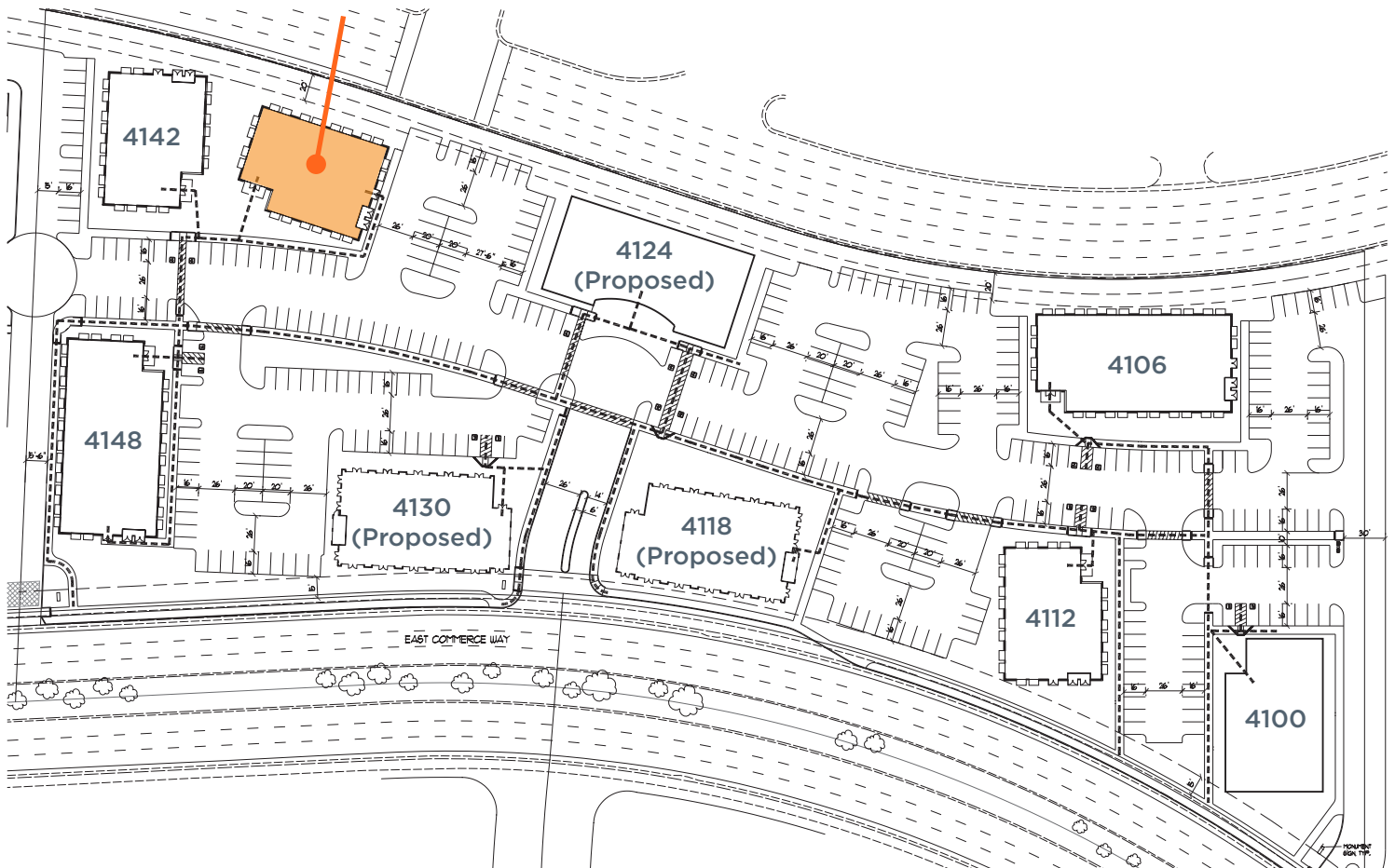


CUSHMAN &  
WAKEFIELD

**±1,307 TO ±2,709 SF OFFICE SPACE AVAILABLE**

## ARENA CORPORATE CENTER SITE PLAN

4136 E Commerce Way  
±1,307 to ±2,709 RSF Available



**CHAD COOK, MCR, SIOR, CCIM**

Senior Director

+1 916 329 1562

chad.cook@cushwake.com

Lic #01711687

**ZACH MOSLE, CCIM**

Senior Associate

+1 916 329 1543

zach.mosle@cushwake.com

Lic #01924595

400 Capitol Mall, Suite 1800

Sacramento, CA 95814

T +1 916 288 4800

[cushmanwakefield.com](http://cushmanwakefield.com)

Cushman & Wakefield Copyright 2017. The information contained herein was lawfully obtained from sources we consider reliable. Cushman & Wakefield is not responsible and expressly disclaims all liability, for errors, omissions, prior sales, withdrawal from the market or change in price. Seller (or Lessor, as the case may be) and broker make no representation as to the environmental condition of the property and recommend Purchaser's (or Lessee's) independent investigation.



**FOR LEASE**  
**4136 E Commerce Way**  
 Sacramento, CA



**±1,307 TO ±2,709 SF OFFICE SPACE AVAILABLE**



**CHAD COOK, MCR, SIOR, CCIM**  
 Senior Director  
 +1 916 329 1562  
 chad.cook@cushwake.com  
 Lic #01711687

**ZACH MOSLE, CCIM**  
 Senior Associate  
 +1 916 329 1543  
 zach.mosle@cushwake.com  
 Lic #01924595

400 Capitol Mall, Suite 1800  
 Sacramento, CA 95814  
 T +1 916 288 4800  
**cushmanwakefield.com**

Cushman & Wakefield Copyright 2017. The information contained herein was lawfully obtained from sources we consider reliable. Cushman & Wakefield is not responsible and expressly disclaims all liability, for errors, omissions, prior sales, withdrawal from the market or change in price. Seller (or Lessor, as the case may be) and broker make no representation as to the environmental condition of the property and recommend Purchaser's (or Lessee's) independent investigation.