



MS Chandler Airpark, Bldg C

2120 S Douglas Dr., Chandler, AZ 85286

Property Features

- 11,187 SF Move-in ready building
- Built in 2016
- Approximately 1,346 SF of Office
- Fenced new air compressor
- Warehouse fully air conditioned
- Secured yard area
- In-place racking system in warehouse
- Excellent signage with optimal exposure

Location Features

- Advantageously located in Class A Industrial Park at Gilbert Rd & Germann Rd
- Anchored by Chandler Municipal Airport
- ±1 mile from Loop 202; close proximity to retail, restaurants & offices



Chandler is ranked No. 1 for
"2018 Best Places to Find a Job"
by WalletHub

FOR SALE: \$1,650,000 (\$147.49/SF)

Mark Wilcke

+1 602 852 3454
mark.wilcke@naihorizon.com

2944 N 44th Street, Suite 200
Phoenix, Arizona
+1 602 955 4000
naihorizon.com

Additional Photos



FOR SALE: \$1,650,000 (\$147.49/SF)

Mark Wilcke

+1 602 852 3454
mark.wilcke@naihorizon.com

2944 N 44th Street, Suite 200
Phoenix, Arizona
+1 602 955 4000
naihorizon.com

Aerial Map



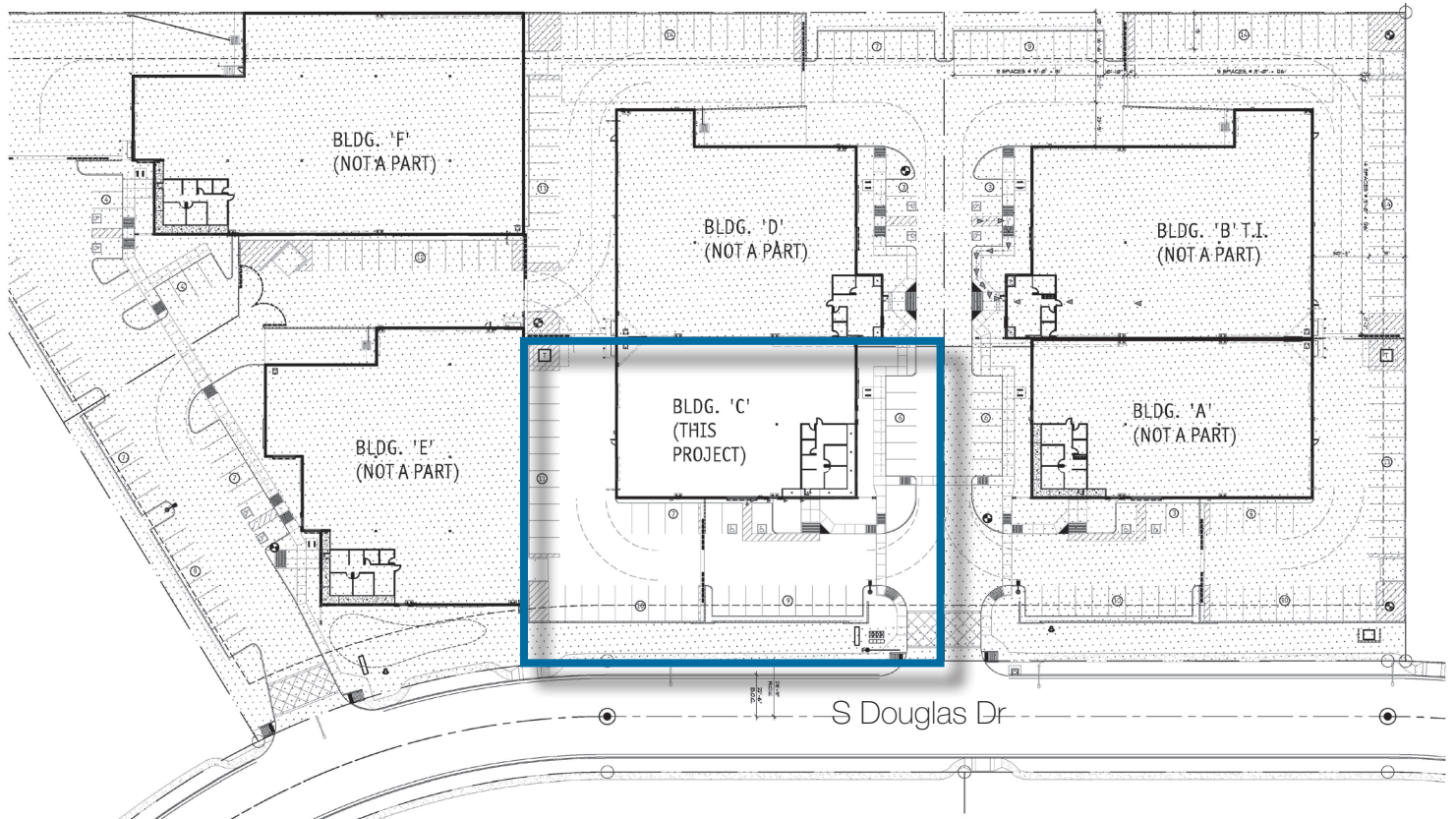
FOR SALE: \$1,650,000 (\$147.49/SF)

Mark Wilcke

+1 602 852 3454
mark.wilcke@naihorizon.com

2944 N 44th Street, Suite 200
Phoenix, Arizona
+1 602 955 4000
naihorizon.com

Site Plan



Property Details

Land Size:	39,248 SF
Clear Height:	18'
Parking:	46 spaces (3.75:1,000 SF)
Power	600 amps 277/480 volts 3 phase
Zoning:	PAD Industrial
Grade Level Doors:	2 (12'x14')

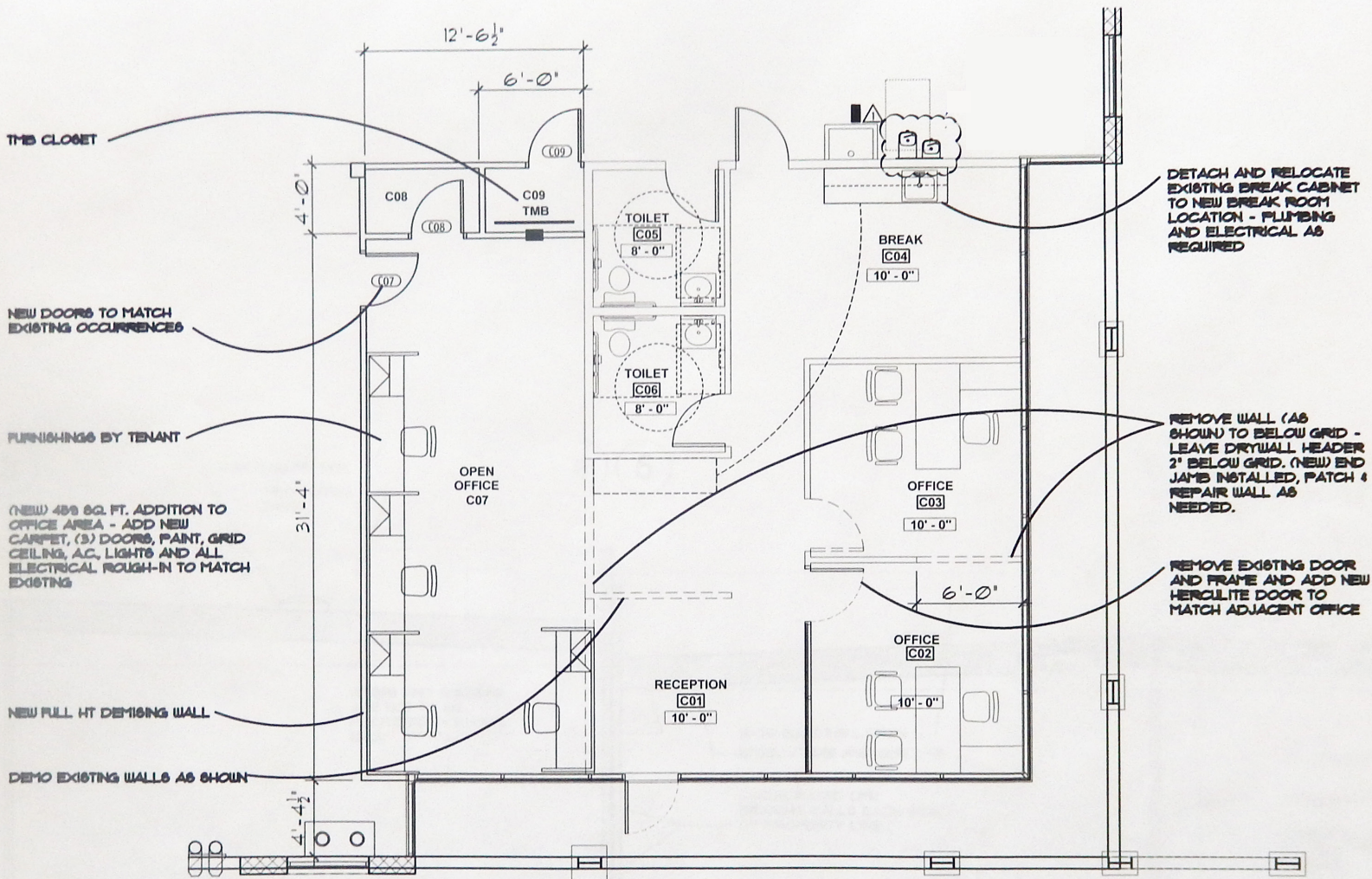
Mark Wilcke

+1 602 852 3454
mark.wilcke@naihorizon.com

2944 N 44th Street, Suite 200
Phoenix, Arizona
+1 602 955 4000
naihorizon.com

Office Floor Plan

BUILDING C



FOR SALE: \$1,650,000 (\$147.49/SF)

Mark Wilcke

+1 602 852 3454

mark.wilcke@naihonorizon.com

2944 N 44th Street, Suite 200

Phoenix, Arizona

+1 602 955 4000

naihonorizon.com