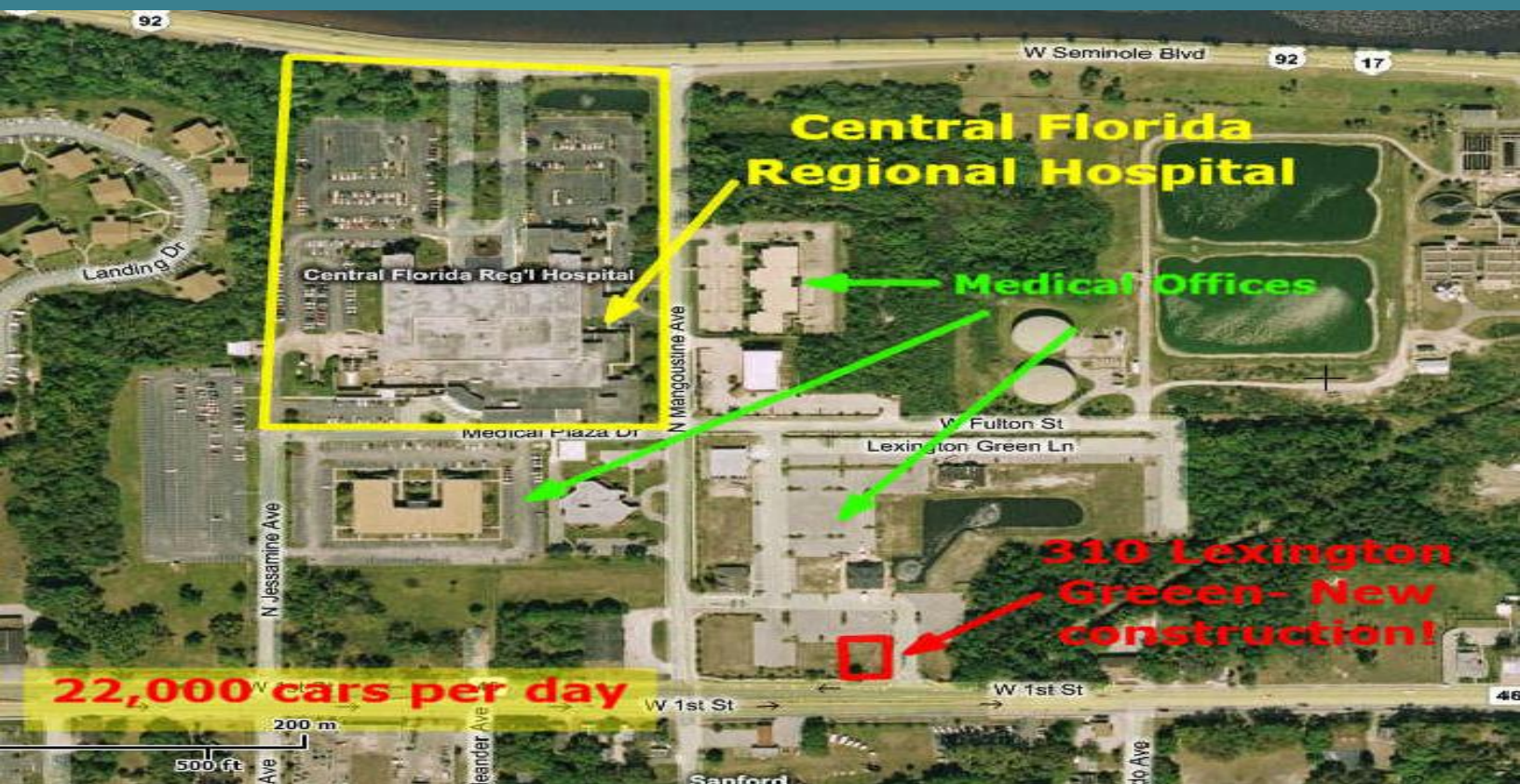


310 Lexington Green Ln

310 Lexington Green Ln | Sanford, FL 32771-1023



- ❖ Across from Central Florida Regional Hospital.
- ❖ Located with frontage on main artery from I-4 with over 22,000 cars per day
- ❖ 2010 construction. Empty shell for tenant customization
- ❖ Bonus 200 sf of climate controlled attic space

Perfectly located medical office facility across from Central Florida Regional Hospital. Now leasing 1,800 sf empty shell with 200 sf of excess space in built-out climate controlled attic of 3,472 sf building. 2010 construction. Co-tenant with Oracare Dental. Ideally located with frontage to main road with over 22,000 cars per day. Just 22 miles north of Orlando in historic Sanford. Part of new medical office park servicing the regional hospital. Space is new and customizable for multiple configurations best suited for tenant.

Roadside signage space available on building!



TRINITYREALESTATE
GROUP

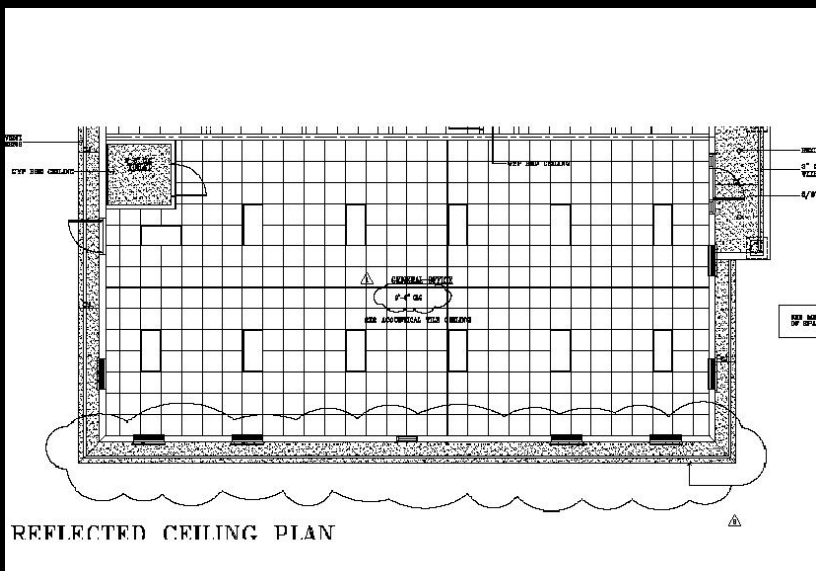
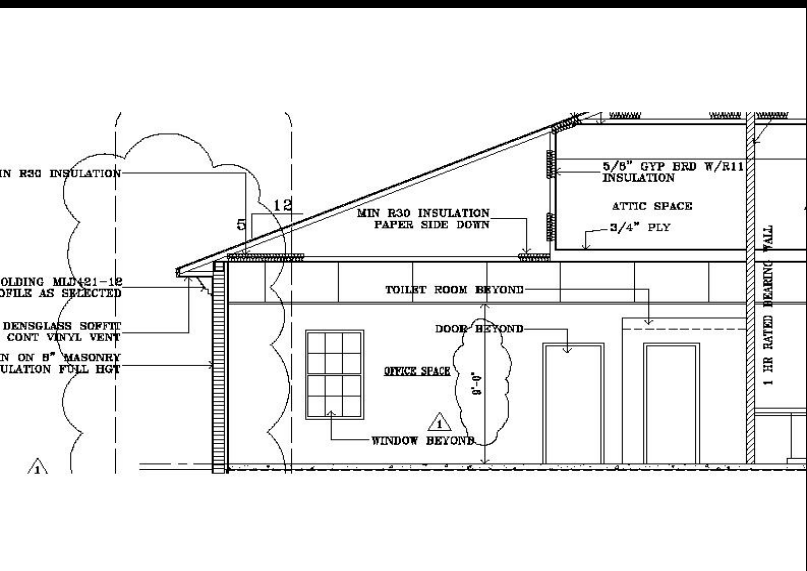
PJ Behr

(407) 312-9967

pj@trinityregroup.com

310 Lexington Green Ln

310 Lexington Green Ln | Sanford, FL 32771-1023



TRINITYREALESTATE
GROUP

PJ Behr

(407) 312-9967

pj@trinityregroup.com