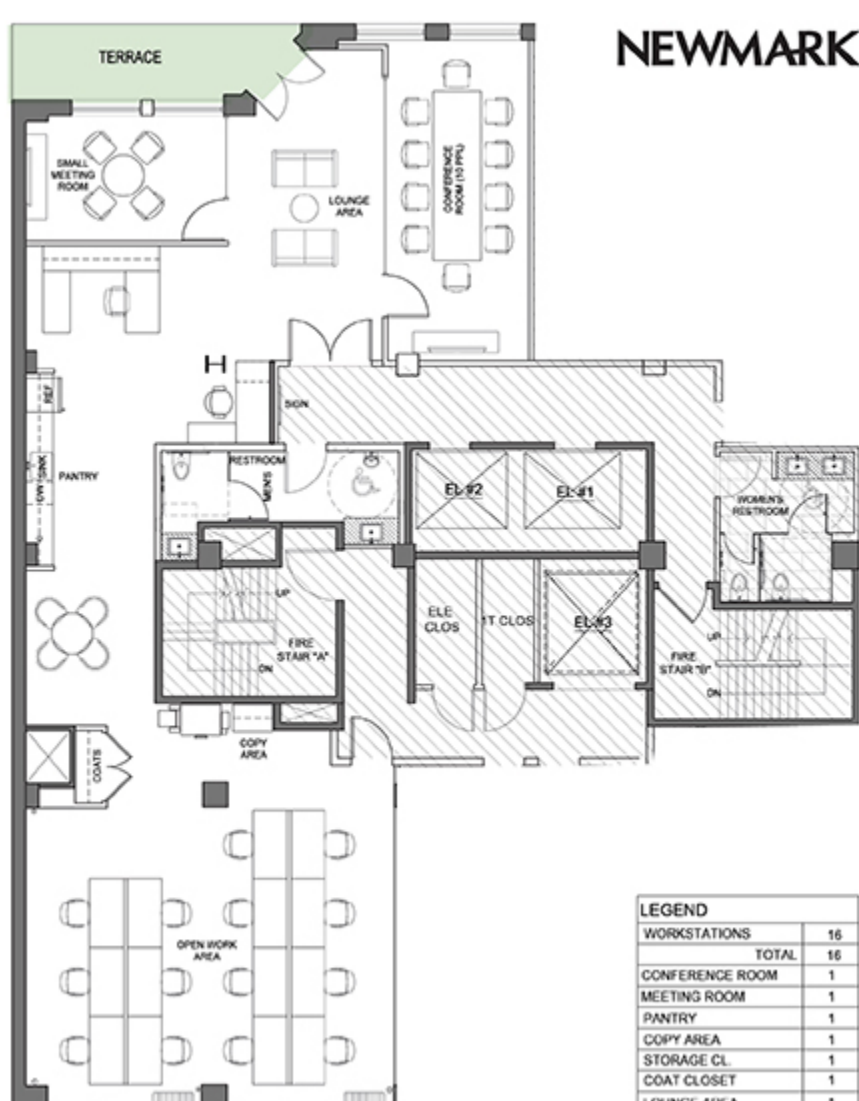


# 251 W30

PARTIAL 9TH FLOOR  
EAST 3,103 RSF



## 251 W 30

**FLOORS / AREA** Partial 9th (East) / 3,103 RSF

**POSSESSION** Immediate

**TERMS** 1-10 years

**COMMENTS** Partial 9th (East)

- Furnished, pre built installation
- Glass fronted conference room, glass fronted office/meeting room, open area and wet pantry
- Private outdoor terrace
- Tenant controlled central A/C
- LED Pendant lighting, exposed ceiling
- Tenant Amenity Center in lower level of building.
- Equipped with bike storage, showers, bathrooms, lounge space, coffee bar and yoga/ exercise room.

**JARAD WINTER**

212-372-2361

jarad.winter@nmrk.com

**JD COHEN**

212-850-5476

jd.cohen@nmrk.com

**WILLIAM COHEN**

212-372-2233

william.cohen@nmrk.com

**ARIEL HARWOOD**

212-372-2077

ariel.harwood@nmrk.com

## 251 W 30



# 251 W30

PARTIAL 9TH FLOOR  
EAST 3,103 RSF

**JARAD WINTER**

212-372-2361

jarad.winter@nmrk.com

**JD COHEN**

212-850-5476

jd.cohen@nmrk.com

**WILLIAM COHEN**

212-372-2233

william.cohen@nmrk.com

**ARIEL HARWOOD**

212-372-2077

ariel.harwood@nmrk.com

DOWNLOAD BROCHURE

125 Park Avenue, New York, NY 10017 t 212-372-2000

The information contained herein has been obtained from sources deemed reliable but has not been verified and no guarantee, warranty or representation, either express or implied, is made with respect to such information. Terms of sale or lease and availability are subject to change or withdrawal without notice.

©2022 Newmark. All Rights Reserved.