

# CUBEWORK®



**31259 Wiegman Road  
Hayward, CA 94544**

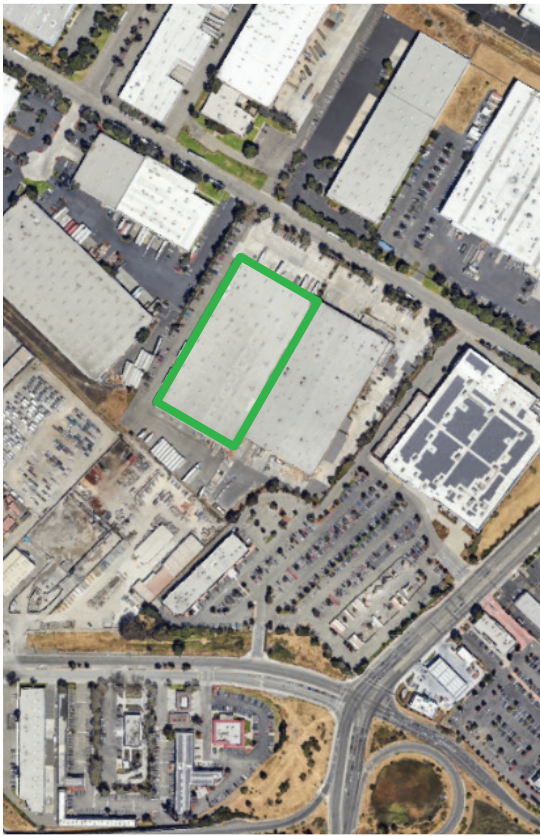
 **(800) 338.6369**

 [info@cubework.com](mailto:info@cubework.com)

 [www.cubework.com](http://www.cubework.com)

 **LEARN  
MORE**

# KEY DISTANCE



## BUILDING SPECS:

**Building size:** 234,000 SF

**Warehouse available:** 300-50,000 SF

**Private office available:** 200-2,621 SF

**Floor:** Reinforced Concrete

**Column spacing:** 40' x 40'

**Clear height:** 28'

**Drive-In Bays:** 1

**Levelers:** 10

**Exterior Dock Doors:** 13

**Standard Parking Spaces:** 114



**6.4 mi**

Hayward Executive  
Airport



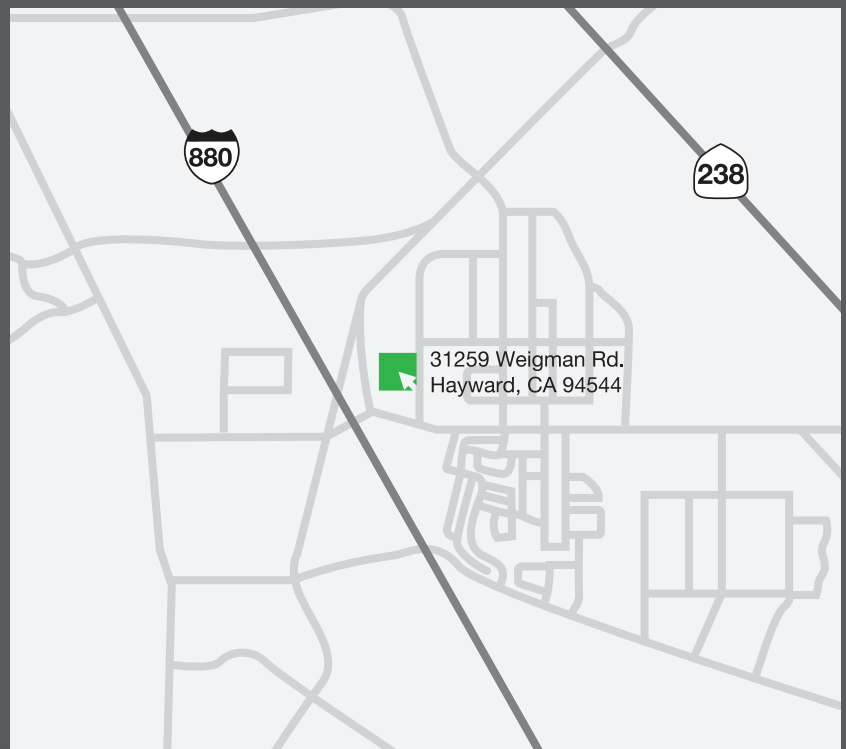
**2.7 mi**

UPS Store

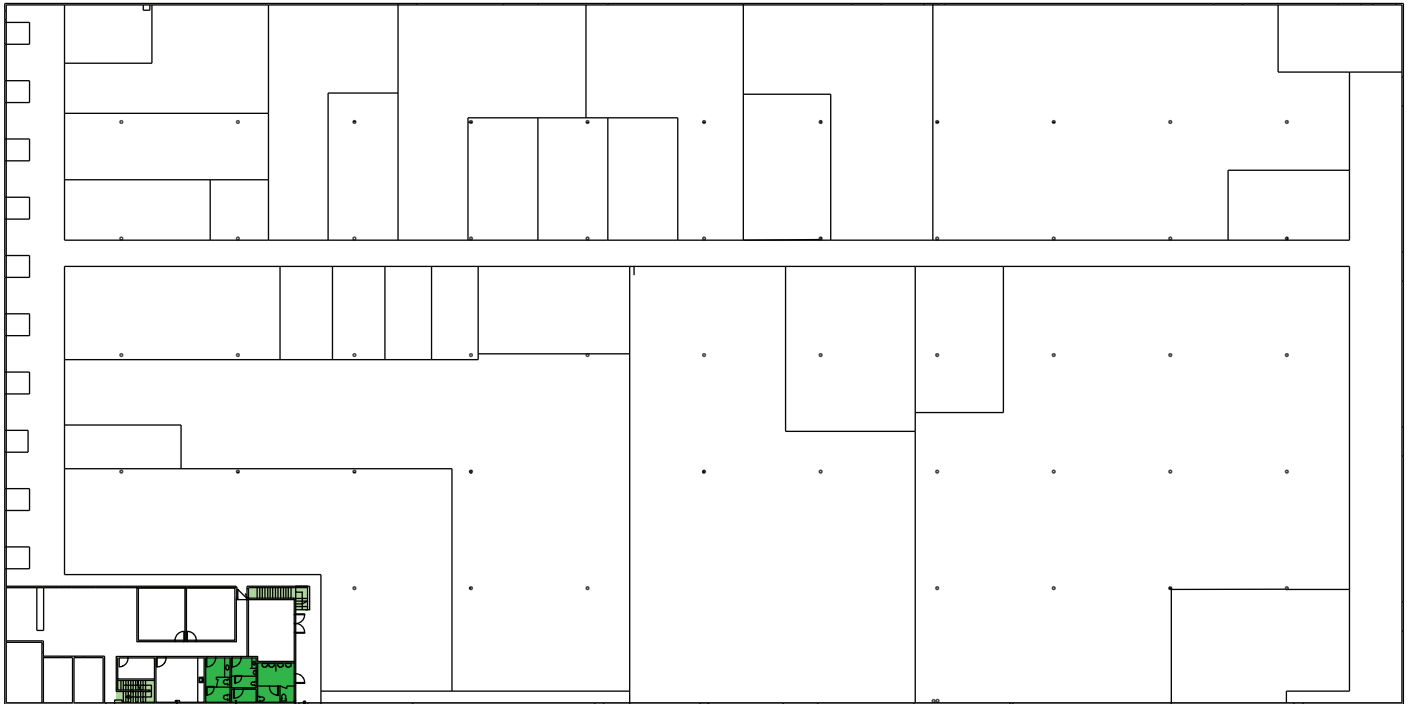


**3.6 mi**

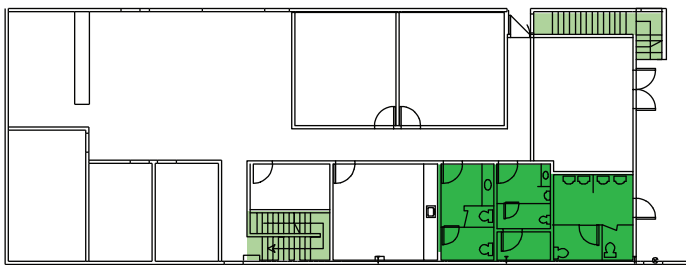
United States Postal  
Service (USPS)



# BUILDING FEATURES



## OFFICE



### KEY

- RESTROOMS
- STAIRS





## AMENITIES

- 24/7 Building Access
- High-Speed Internet
- Unique Common Areas
- Conference Rooms
- Coffee & Fresh Water
- Creative Workspaces
- 24/7 Customer Service
- Community Managers
- Mail and Package Handling
- Loading Docks
- CCTV, Surveillance System
- Daily Cleaning and Maintenance
- Business Class Printers
- Social Events
- Global Network
- Gym & Lockers
- Fully Furnished Offices
- Security Guards

## SERVICES

- Front Desk Service
- Mail and Package Handling
- Office Supplies
- Business Class Printers
- Fresh Coffee & Tea
- Air Conditioning
- Surveillance & Night Security Guards
- Flexible On-demand Warehouse Terms
- Option to Merge

Amenities vary on location



# FACILITY PHOTOS



FOR MORE INFORMATION CONTACT

 **(800) 338.6369**

 [info@cubework.com](mailto:info@cubework.com)

 [www.cubework.com](http://www.cubework.com)