



Full Floor Creative Plug & Play

489 CLEMENTINA STREET

AVAILABLE IMMEDIATELY
2nd Floor: 7,100 RSF

FOR MORE INFORMATION PLEASE CONTACT:

BRITTAN HAWKEN

310 344 2554

brittan.hawken@am.jll.com

RE Lic #: 01963161

CARLYE PARKER

415 228 3130

carlye.parker@am.jll.com

RE Lic #: 02089807

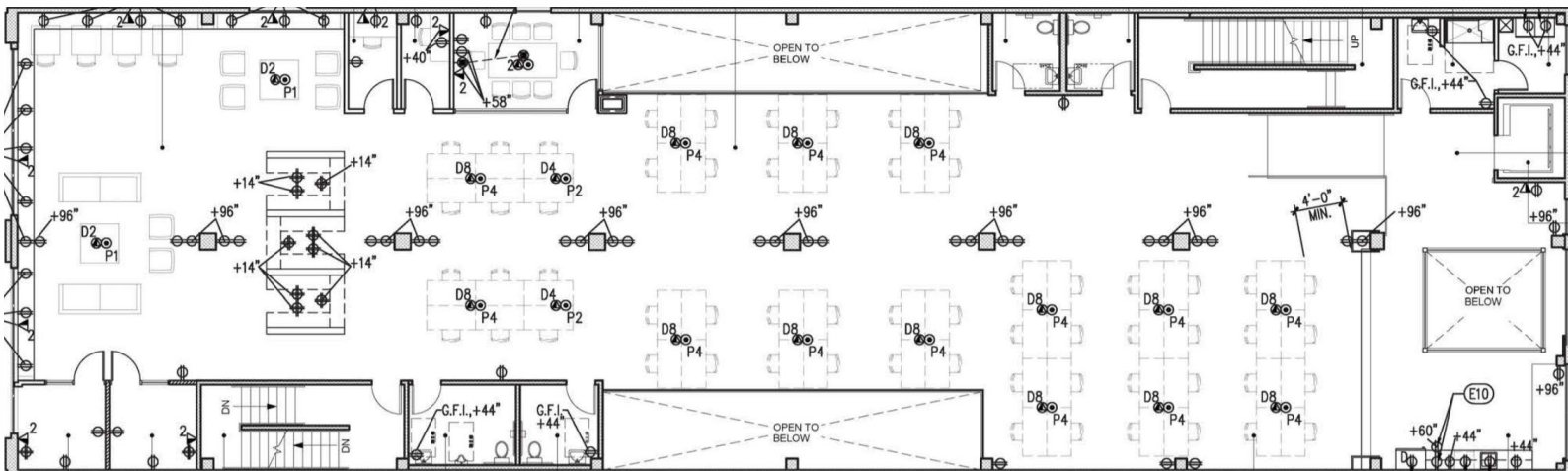




RSF	AVAILABILITY	TERM	RATE
2nd Floor: 7,100 RSF	Now	1 year	Inquire with brokers

SUITE NOTES:

- Room for 50-70 desks
- 1 Large conference room
- 2 Small meeting rooms
- 2 Call Rooms
- 3 Semi-private open booth sitting areas
- Large lounge area
- Open Kitchen area with dishwasher
- 4 ADA bathrooms
- 1 Shower room with lockers
- Laundry room with washer and dryer



FOR MORE INFORMATION PLEASE CONTACT:

BRITTAN HAWKEN

310 344 2554
brittan.hawken@am.jll.com

RE Lic #: 01963161

CARLYE PARKER

415 228 3130
carlye.parker@am.jll.com

RE Lic #: 02089807



