

# FOR LEASE

Baltimore County, MD

# JOPPA GREEN II

2328 W. JOPPA ROAD | LUTHERVILLE, MARYLAND 21093

## AVAILABLE

Suite 5: 776 sf (Available 10/1/19)

Suite 15: 784 sf (Storage)

## RENTAL RATE

Suite 5: \$1,250/month

Suite 15: \$17.50/sf, FS

## TERM

Minimum 3 - 5 years

## PARKING

Free surface

## OCCUPANCY

Immediate

## NEARBY AMENITIES

Dining, retail, banking, personal services

## HIGHLIGHTS

- ▶ Located in the highly sought-after Falls Road Corridor
- ▶ Easy access to I-695 and I-83 North and South
- ▶ Class A office with flexible floor plan
- ▶ Within 15 minutes to downtown Baltimore



**Bill Whitty**

☎ 410.494.4862

✉ [bwhitty@mackenziecommercial.com](mailto:bwhitty@mackenziecommercial.com)

**Henson Ford**

☎ 410.494.6657

✉ [hford@mackenziecommercial.com](mailto:hford@mackenziecommercial.com)

**Matt Mueller**

☎ 410.494.6658

✉ [mmueller@mackenziecommercial.com](mailto:mmueller@mackenziecommercial.com)

**Joe Bradley**

☎ 410.494.4892

✉ [jbradley@mackenziecommercial.com](mailto:jbradley@mackenziecommercial.com)

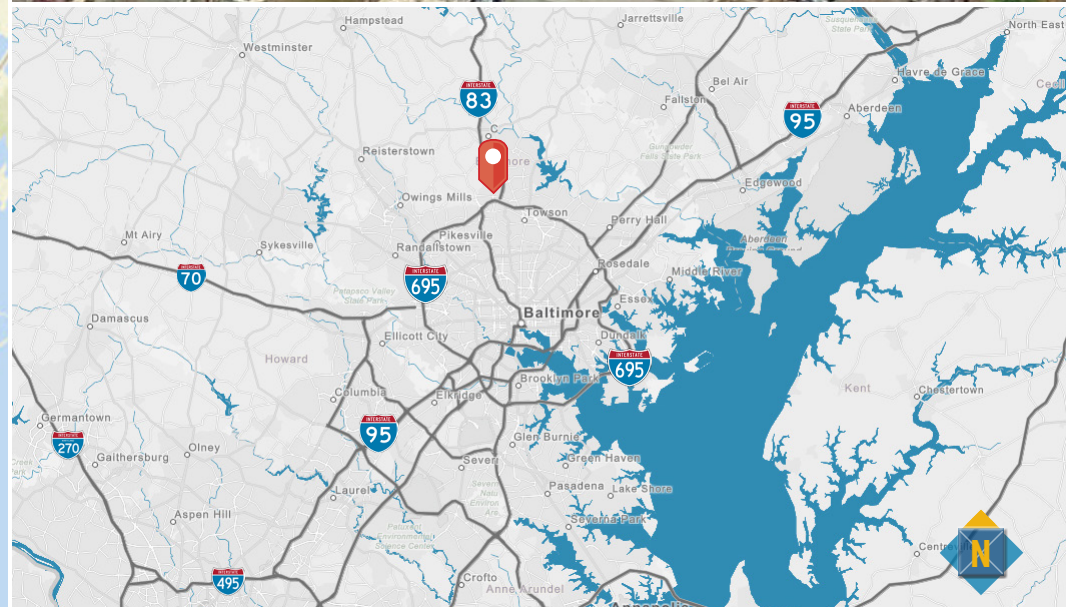
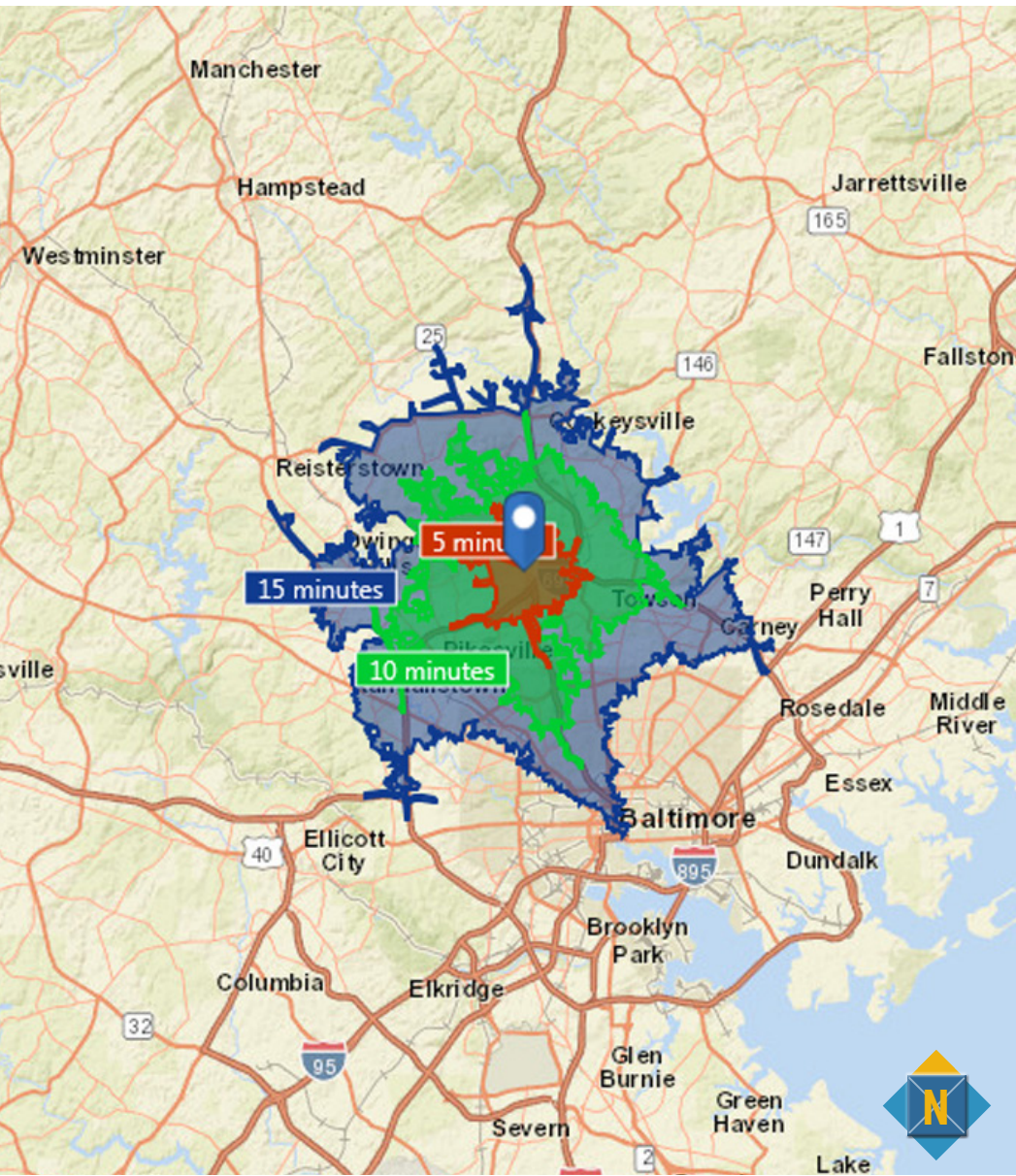
MacKenzie Commercial Real Estate Services, LLC • 410-821-8585 • 2328 W. Joppa Road, Suite 200 | Lutherville-Timonium, Maryland 21093 • [www.MACKENZIECOMMERCIAL.com](http://www.MACKENZIECOMMERCIAL.com)

# FOR LEASE

Baltimore County, MD

# LOCATION/DRIVE TIME

JOPPA GREEN II | 2328 W. JOPPA ROAD | LUTHERVILLE, MARYLAND 21093



**Bill Whitty**  
 ☎ 410.494.4862  
 ✉ [bwhitty@mackenziecommercial.com](mailto:bwhitty@mackenziecommercial.com)  
 MacKenzie Commercial Real Estate Services, LLC

**Henson Ford**  
 ☎ 410.494.6657  
 ✉ [hford@mackenziecommercial.com](mailto:hford@mackenziecommercial.com)  
 MacKenzie Commercial Real Estate Services, LLC

**Matt Mueller**  
 ☎ 410.494.6658  
 ✉ [mmueller@mackenziecommercial.com](mailto:mmueller@mackenziecommercial.com)  
 MacKenzie Commercial Real Estate Services, LLC

**Joe Bradley**  
 ☎ 410.494.4892  
 ✉ [jbradley@mackenziecommercial.com](mailto:jbradley@mackenziecommercial.com)  
 MacKenzie Commercial Real Estate Services, LLC

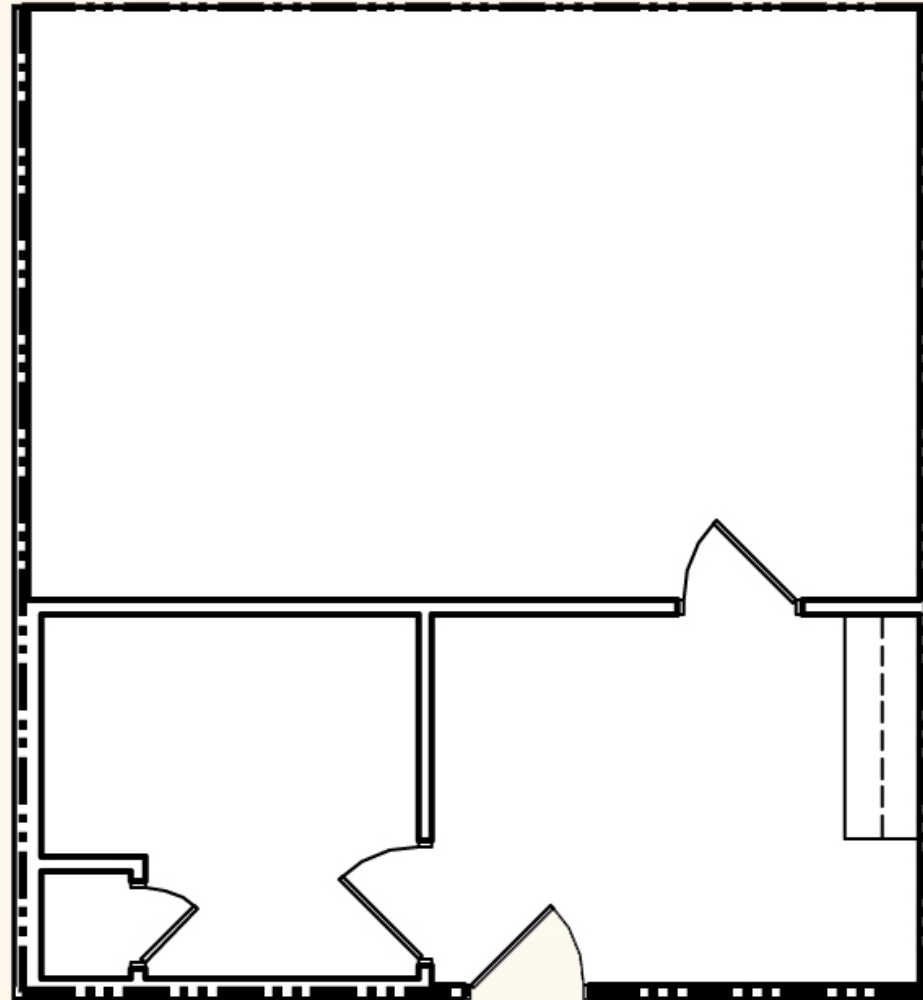
410-821-8585 • 2328 W. Joppa Road, Suite 200 | Lutherville-Timonium, Maryland 21093 • [www.MACKENZIECOMMERCIAL.com](http://www.MACKENZIECOMMERCIAL.com)

# FOR LEASE

Baltimore County, MD

# FLOOR PLAN - SUITE 15

JOPPA GREEN II | 2328 W. JOPPA ROAD | LUTHERVILLE, MARYLAND 21093



**Bill Whitty**

☎ 410.494.4862

✉ [bwhitty@mackenziecommercial.com](mailto:bwhitty@mackenziecommercial.com)

**Henson Ford**

☎ 410.494.6657

✉ [hford@mackenziecommercial.com](mailto:hford@mackenziecommercial.com)

**Matt Mueller**

☎ 410.494.6658

✉ [mmueller@mackenziecommercial.com](mailto:mmueller@mackenziecommercial.com)

**Joe Bradley**

☎ 410.494.4892

✉ [jbradley@mackenziecommercial.com](mailto:jbradley@mackenziecommercial.com)