

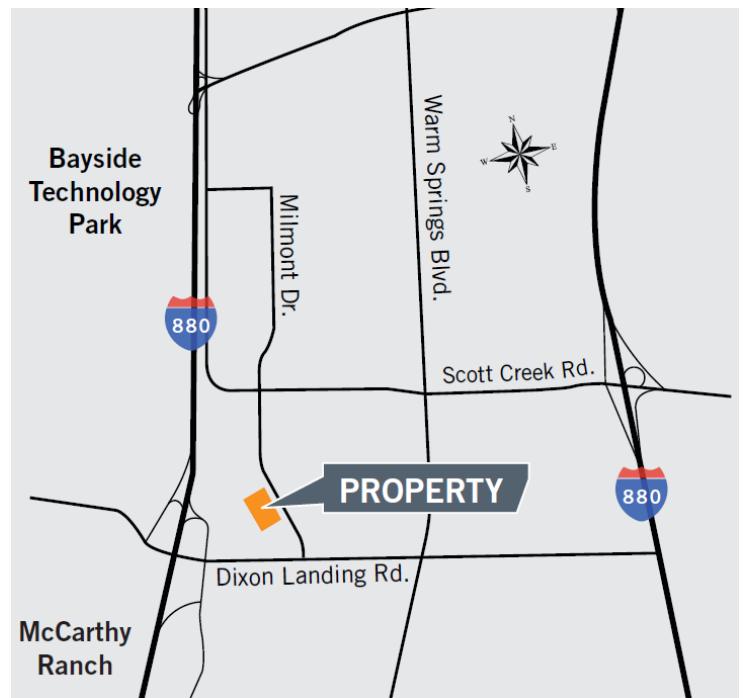
Dixon Landing Business Park

423 – 467 Dixon Landing Rd., 1860 – 1940 Milmont Dr., 1909- 1933 Milmont Dr., Milpitas, CA



FEATURES

- ±202,762 total square feet
- Suite sizes range from ±7,074 sf - ±54,440 sf
- Various configurations of R&D/Manufacturing Warehouse
- Excellent access to I-880, I-680, Highway 237
- Excellent visibility & corner location
- Potential building and monument signage
- Grade level & dock high loading



OWNED AND OPERATED BY

PSBUSINESSPARKS

www.psbusinessparks.com

FOR LEASING CONTACT:
408-453-9921

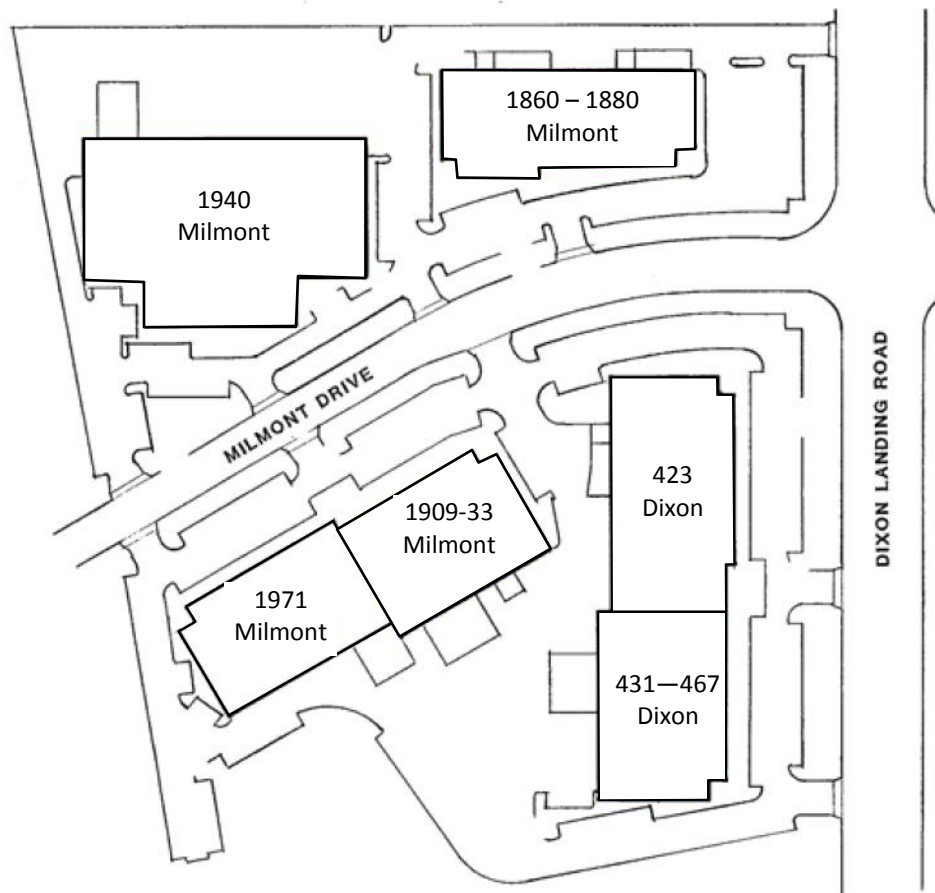
NGOC ROSSI
nrossi@psbusinessparks.com

KHANH TRINH
ktrinh@psbusinessparks.com

Dixon Landing Business Park

423 – 467 Dixon Landing Rd., 1860 – 1940 Milmont Dr., 1909- 1933 Milmont Dr., Milpitas, CA

Site Plan:



OWNED AND OPERATED BY

PSBUSINESSPARKS

www.psbusinessparks.com

FOR LEASING CONTACT:
408-453-9921

NGOC ROSSI
nrossi@psbusinessparks.com

KHANH TRINH
ktrinh@psbusinessparks.com

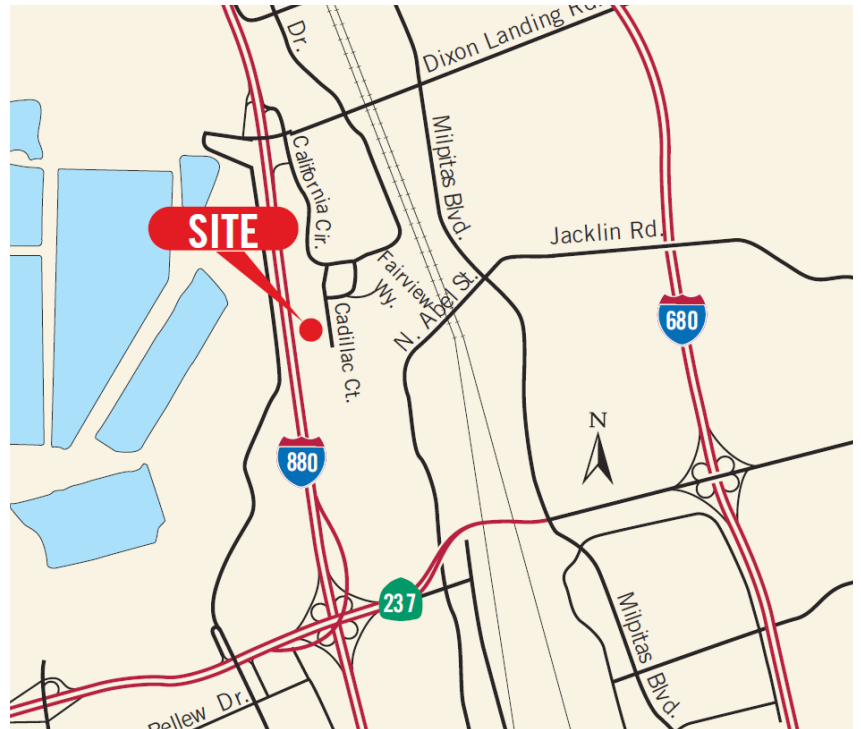
Cadillac Industrial Park

901 – 1181 Cadillac Court, Milpitas, CA



FEATURES

- ±302,437 total square feet
- Suite sizes range from ±10,235 sf - ±70,042 sf
- Various configurations of Office/R&D/Warehouse
- Excellent access to Interstate 880
- Good access to Freeway I-680 & Highway 237
- Excellent freeway visibility
- Grade level & dock high loading
- Good clear height



OWNED AND OPERATED BY

PSBUSINESSPARKS

www.psbusinessparks.com

FOR LEASING CONTACT:
408-453-9921

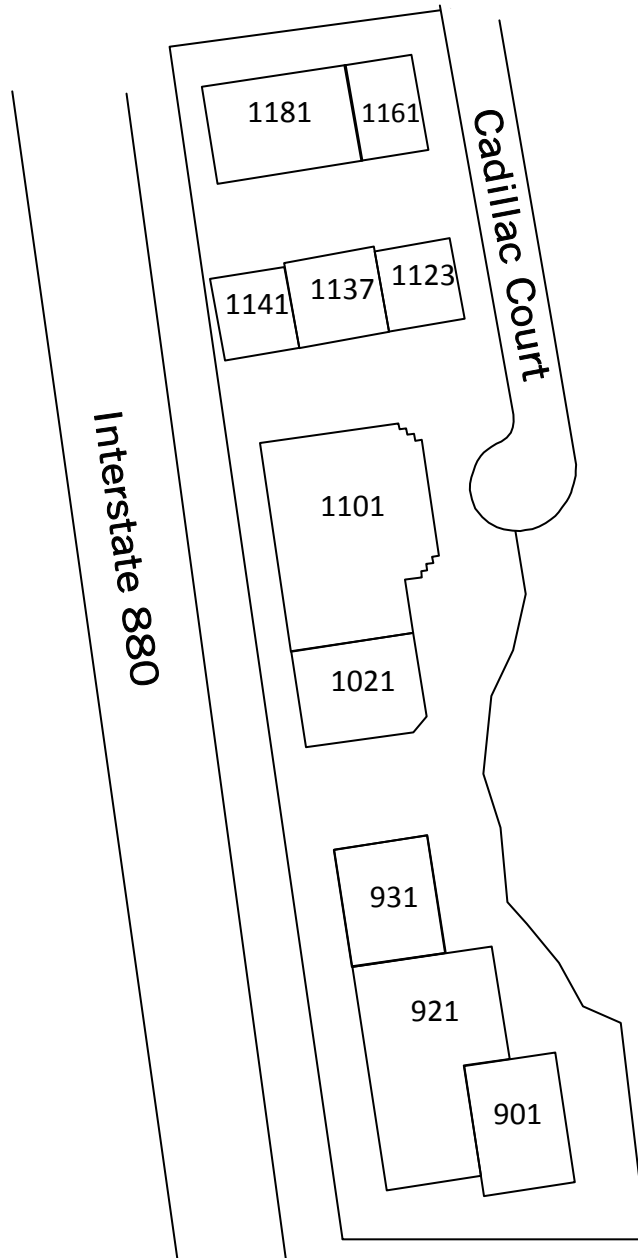
NGOC ROSSI
nrossi@psbusinessparks.com

KHANH TRINH
ktrinh@psbusinessparks.com

Cadillac Industrial Park

901 – 1181 Cadillac Court, Milpitas, CA

Site Plan:



OWNED AND OPERATED BY

PSBUSINESSPARKS

www.psbusinessparks.com

FOR LEASING CONTACT:
408-453-9921

NGOC ROSSI
nrossi@psbusinessparks.com

KHANH TRINH
ktrinh@psbusinessparks.com