

LAND FOR SALE WHITE OAKS LANDFILL

Meadowlark Drive, Monroe, LA 71203



PROPERTY HIGHLIGHTS

- Remaining Landfill Capacity Available
- Previously operated by BFI as a Type II Landfill
- 1,800' of I-20 Frontage
- Approximately 4 years remaining on post closure
- Just South of Millhaven North
- 1.3M SF Graphic Packaging Facility Developed just north of the site. One of the largest economic development projects in the history of Ouachita Parish.



OFFERING SUMMARY

Sale Price:	\$943,250
Lot Size:	53.9 Acres
Price Per Acre:	\$17,500 Per Acre

Evan Scroggs, SIOR, CCIM
escroggs@lee-associates.com
D 225.427.9240

All information furnished regarding property for sale, rental or financing is from sources deemed reliable, but no warranty or representation is made to the accuracy thereof and same is submitted to errors, omissions, change of price, rental or other conditions prior to sale, lease or financing or withdrawal without notice. No liability of any kind is to be imposed on the broker herein.

LAND FOR SALE WHITE OAKS LANDFILL

Meadowlark Drive, Monroe, LA 71203



Sale Price	\$943,250
------------	------------------

OFFERING SUMMARY

Lot Size:	53.9 Acres
Price / Acre:	\$17,500
Market:	Monroe

PROPERTY OVERVIEW

The subject property is a 53.903-acre vacant tract of land that was previously operated as by BFI as the White Oaks Landfill. White Oaks Landfill is a Type II solid waste facility with Interstate 20 frontage on the eastern side of Ouachita Parish. There are approximately 8 years remaining on its post-closure. There is additional on-site capacity remaining providing a new operator with lower entry and startup costs into a highly regulated market.

LOCATION OVERVIEW

The subject is located just east of Monroe, LA along Interstate 20 in north Louisiana. Monroe is the eighth-largest city in Louisiana and is the parish seat of Ouachita Parish. The subject is adjacent to the WCI operated White Oaks Landfill and just south of Millhaven North - a 640-acre LED Certified Site and the new \$150M+ Graphic Packaging Facility currently under construction and scheduled for completion in November 2018. Proximity to industry, Interstate 20 frontage, and large economic development project in the immediate vicinity make this a strategic location.

Evan Scroggs, SIOR, CCIM
escroggs@lee-associates.com
D 225.427.9240

All information furnished regarding property for sale, rental or financing is from sources deemed reliable, but no warranty or representation is made to the accuracy thereof and same is submitted to errors, omissions, change of price, rental or other conditions prior to sale, lease or financing or withdrawal without notice. No liability of any kind is to be imposed on the broker herein.

LAND FOR SALE WHITE OAKS LANDFILL

Meadowlark Drive, Monroe, LA 71203

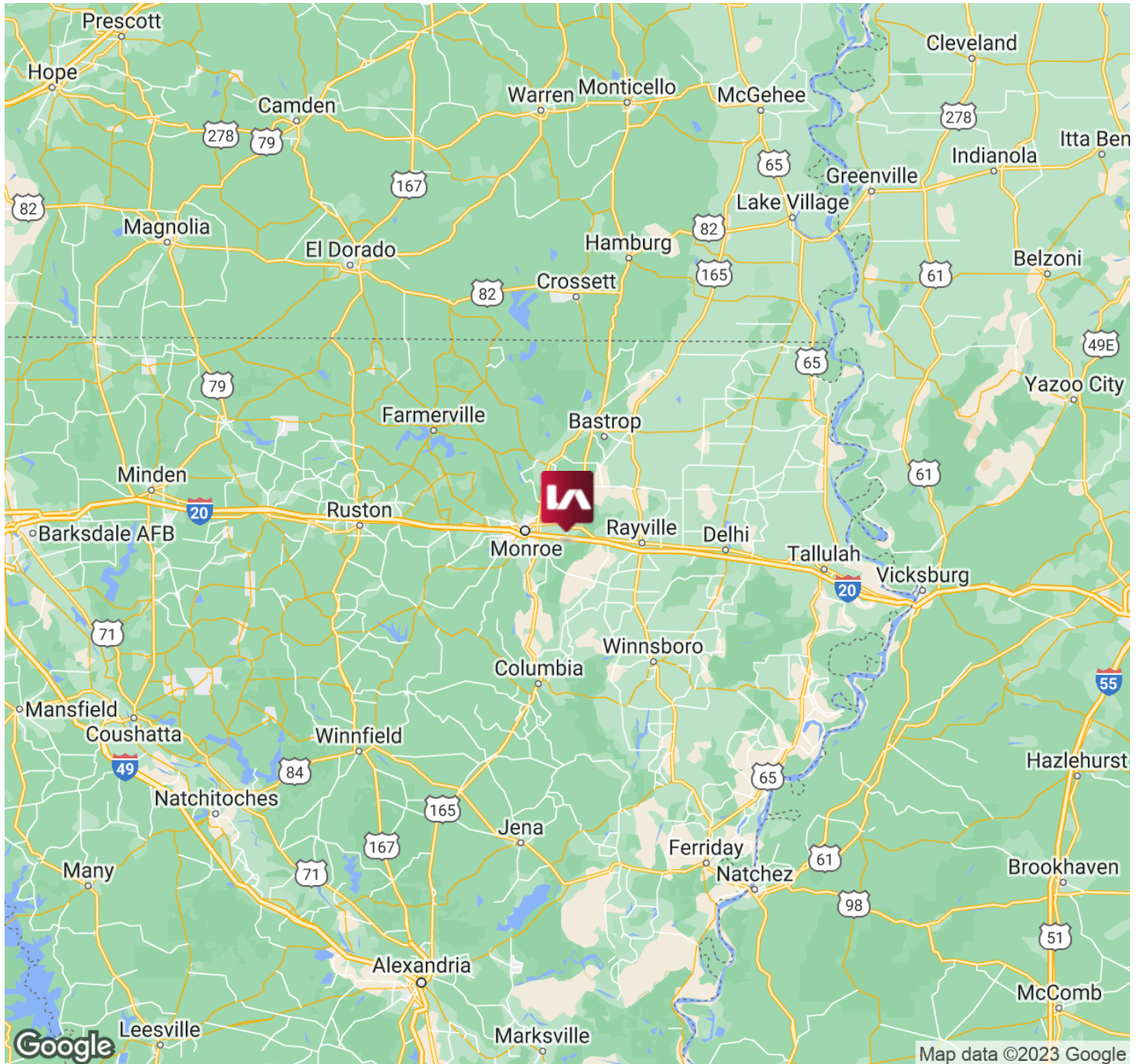


Evan Scroggs, SIOR, CCIM
escroggs@lee-associates.com
D 225.427.9240

All information furnished regarding property for sale, rental or financing is from sources deemed reliable, but no warranty or representation is made to the accuracy thereof and same is submitted to errors, omissions, change of price, rental or other conditions prior to sale, lease or financing or withdrawal without notice. No liability of any kind is to be imposed on the broker herein.

LAND FOR SALE WHITE OAKS LANDFILL

Meadowlark Drive, Monroe, LA 71203



Evan Scroggs, SIOR, CCIM
escroggs@lee-associates.com
D 225.427.9240

All information furnished regarding property for sale, rental or financing is from sources deemed reliable, but no warranty or representation is made to the accuracy thereof and same is submitted to errors, omissions, change of price, rental or other conditions prior to sale, lease or financing or withdrawal without notice. No liability of any kind is to be imposed on the broker herein.

LAND FOR SALE WHITE OAKS LANDFILL

Meadowlark Drive, Monroe, LA 71203

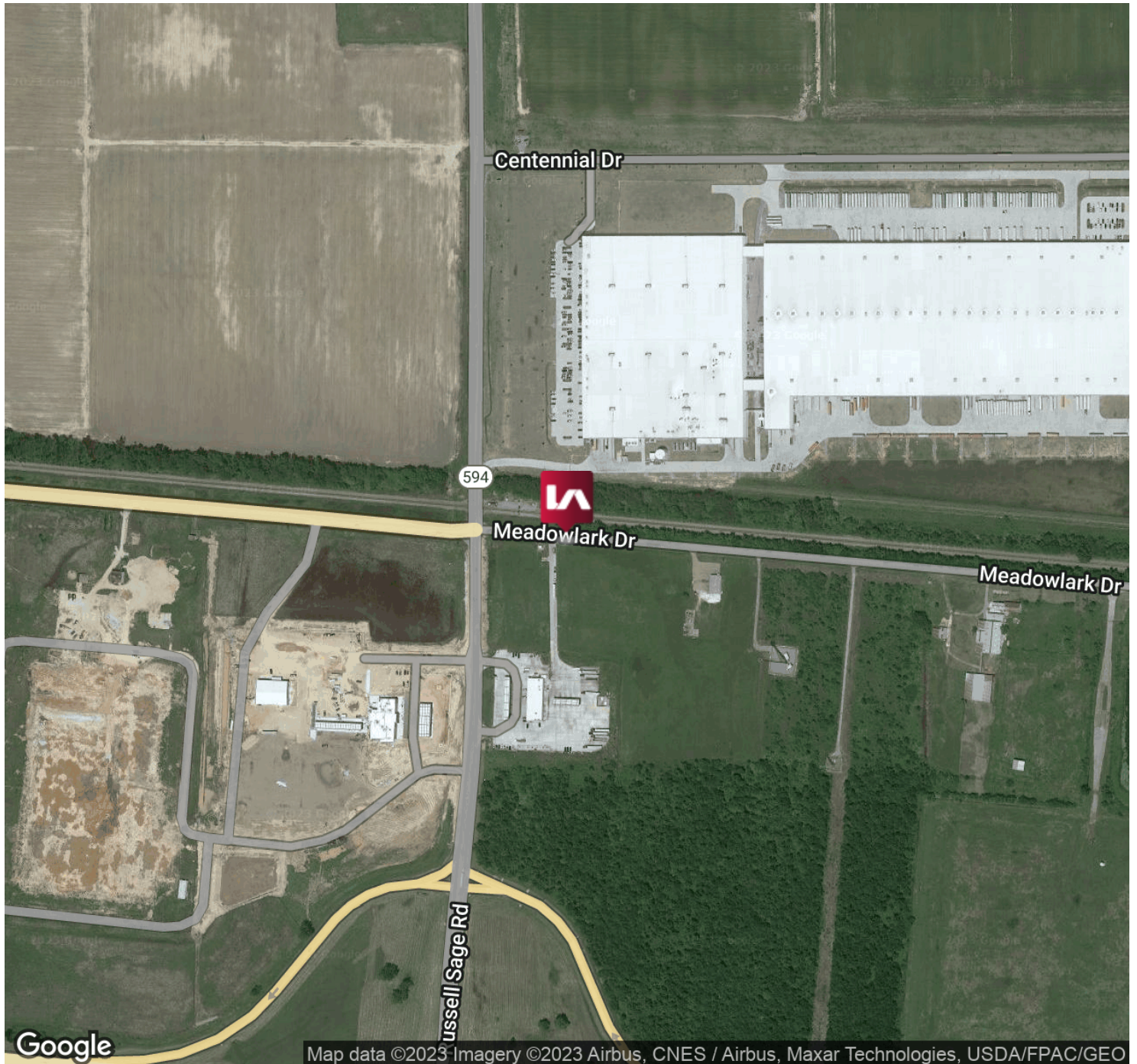


Evan Scroggs, SIOR, CCIM
escroggs@lee-associates.com
D 225.427.9240

All information furnished regarding property for sale, rental or financing is from sources deemed reliable, but no warranty or representation is made to the accuracy thereof and same is submitted to errors, omissions, change of price, rental or other conditions prior to sale, lease or financing or withdrawal without notice. No liability of any kind is to be imposed on the broker herein.

LAND FOR SALE
WHITE OAKS LANDFILL

Meadowlark Drive, Monroe, LA 71203



Evan Scroggs, SIOR, CCIM
escroggs@lee-associates.com
D 225.427.9240

All information furnished regarding property for sale, rental or financing is from sources deemed reliable, but no warranty or representation is made to the accuracy thereof and same is submitted to errors, omissions, change of price, rental or other conditions prior to sale, lease or financing or withdrawal without notice. No liability of any kind is to be imposed on the broker herein.