



For Sale

Location

421 Bennett Lane,
Lewisville, TX 75067

Net Area

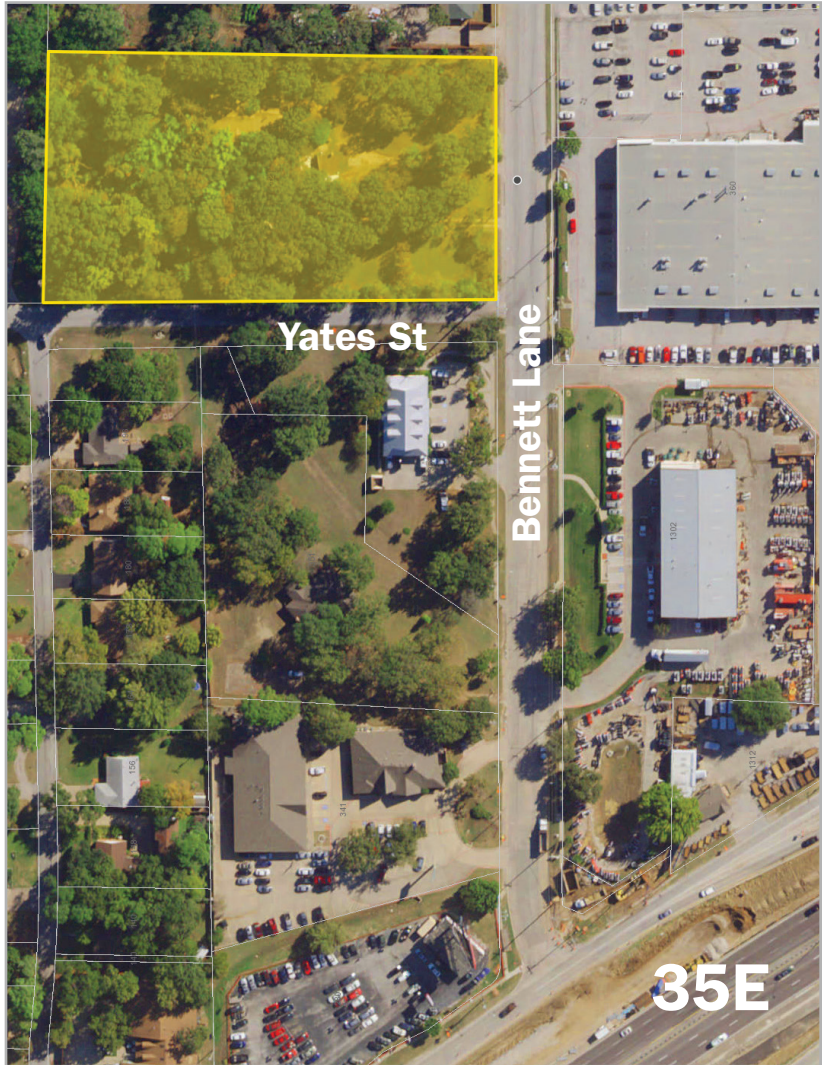
3.03 acres

Price

\$550,000.00

Features

- Not zoned currently but surrounded by Light Industrial
- Property has frontage on both Yates & Bennett Lane.
- Sewer & Water are both to the site.



Contact

Todd Weaver
3505 Yucca Drive, Suite 100
Flower Mound, Texas 75028

todd@weavercommercial.com

469-635-2833 Office

469-635-2849 Fax

