

STANCE
COMMERCIAL REAL ESTATE

JOE STANCE
JOE@STANCEREALESTATE.COM
909.772.1212



COMMERCIAL REAL ESTATE **OPPORTUNITY**

**4035-4037 MARKET STREET
RIVERSIDE, CA 92501**



4035-4037 MARKET STREET RIVERSIDE, CA 92501



STANCE

PROPERTY HIGHLIGHTS

**FOR SUBLEASE - \$2.00 Gross Per Square Foot.
Long-Term Lease Preferred**

Office Opportunity In The Heart of Downtown Riverside

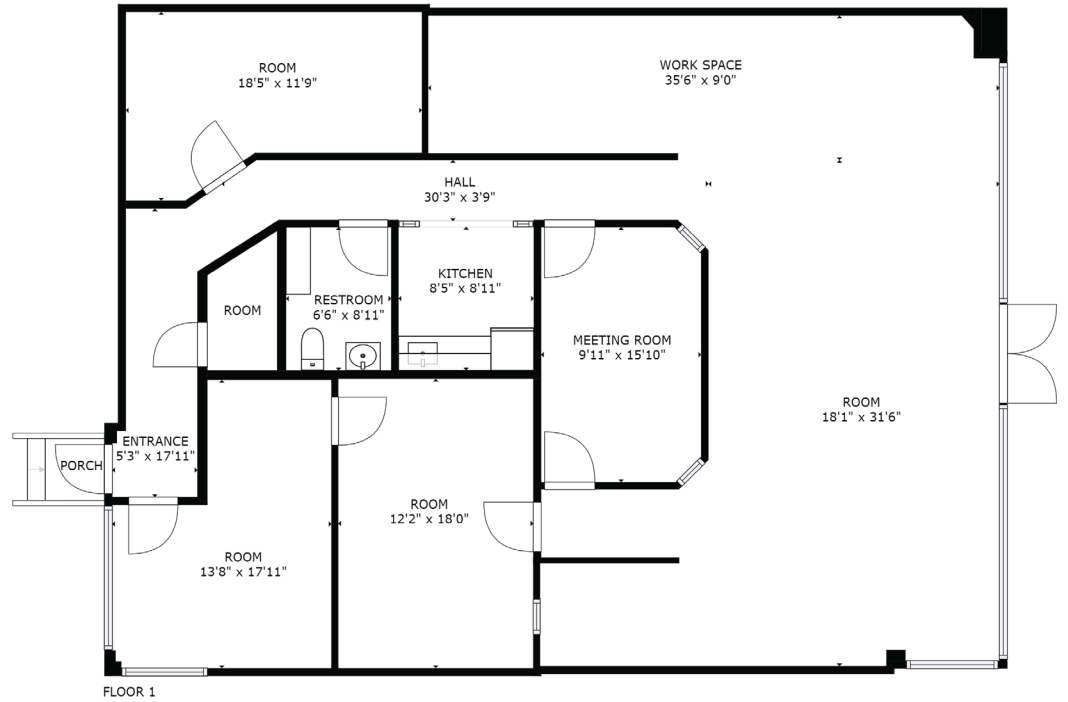
- +/- 2,160 Square Foot Office
- End Unit and Separate Address
- Frontage on Market Street
- Walking Distance to the Legal District
- Open Floor Plan
- Conference Room
- Front Reception Area
- Kitchenette
- 2 Private Offices
- Back Door Entrance

STANCE
COMMERCIAL REAL ESTATE

JOE STANCE
JOE@STANCEREALESTATE.COM
909.772.1212

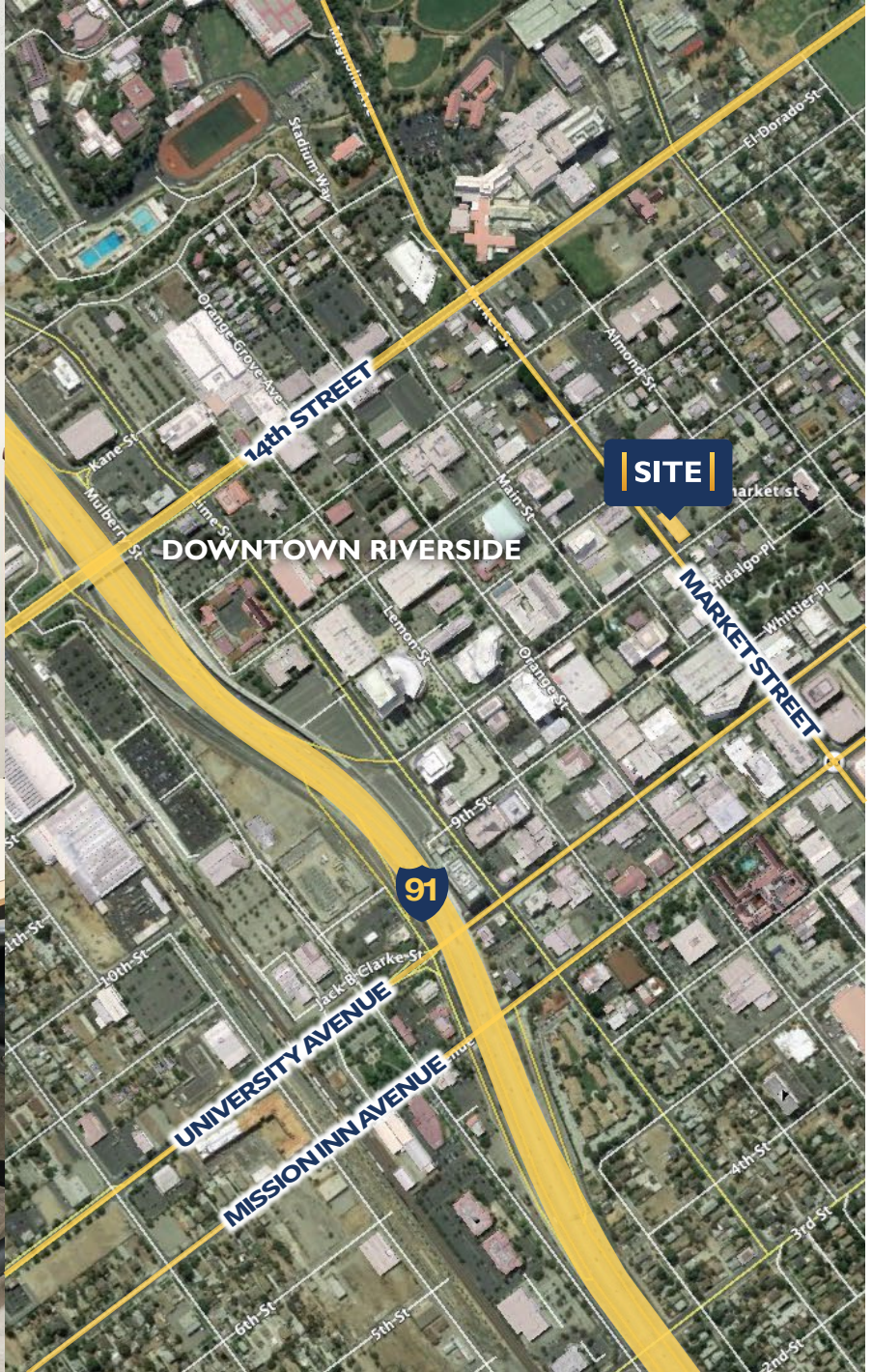


FLOOR PLAN



STANCE
COMMERCIAL REAL ESTATE

LOCATION HIGHLIGHTS



JOE STANCE
JOE@STANCEREALSTATE.COM
909.772.1212