

## WASHINGTON PROFESSIONAL CENTER

5814 GRAHAM AVENUE - SUMNER, WA

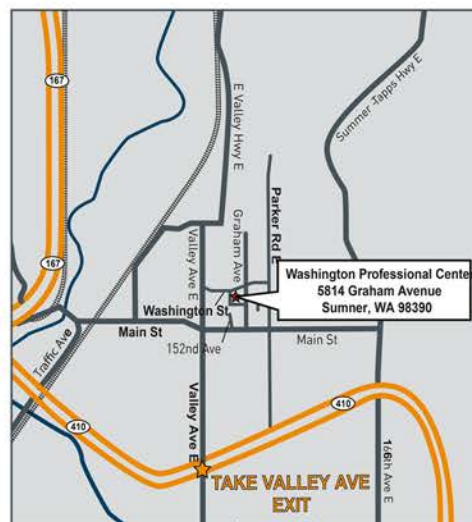


### SPACE AVAILABLE

- 1,847 SF
- Modified Gross Lease

### FEATURES

- Class "A" professional office space
- Perfect for medical and dental offices, attorneys and other professionals
- Fully sprinklered
- First class lobby with elevator and stairwell to second floor
- Convenient access to Hwy 410 and SR 167
- Located in downtown Sumner adjacent to Fred Meyer
- Surrounded by residential communities



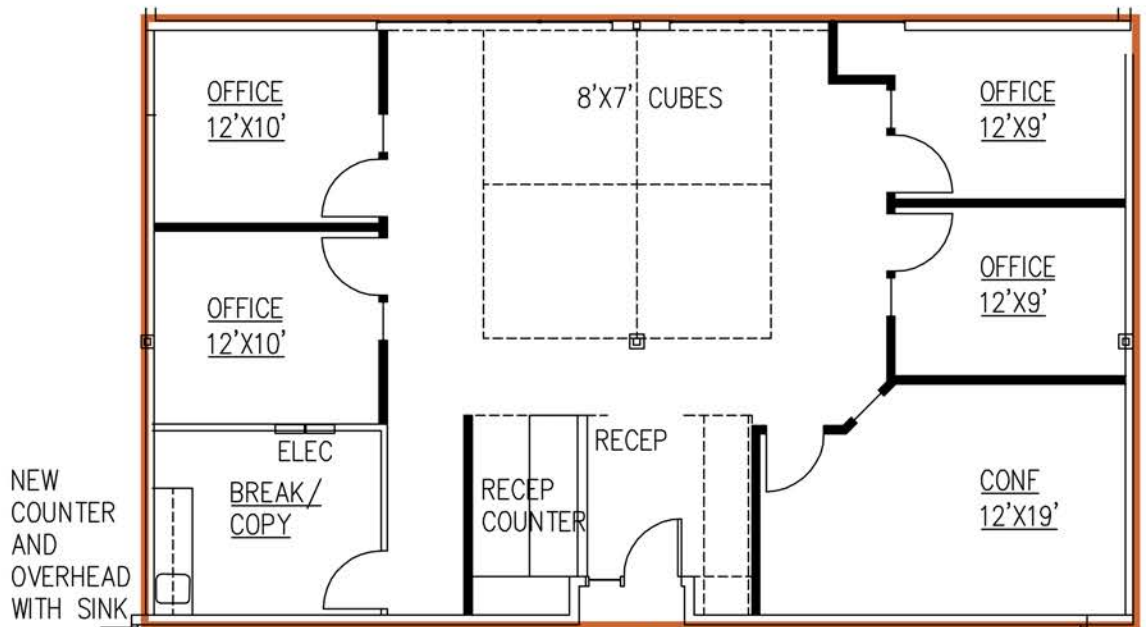
**FOR LEASING INFORMATION,  
PLEASE CALL:  
253.447.3049**

**EXISTING  
FLOOR PLAN**



**SUITE 203  
OPTIONAL  
FLOOR PLAN**

**1**



**SUITE 203  
OPTIONAL  
FLOOR PLAN**

**2**

