

OFFICE SPACE
FOR LEASE



5% COMMISSION TO PROCURING BROKER

POINT WEST EXECUTIVE PLAZA
1451 RIVER PARK DRIVE
SACRAMENTO, CA

PROPERTY FEATURES:

- Attractive office building in the heart of desirable Point West
- On-site Leasing Office and Management
- Common Conference Center
- On-site Common Area Training Room for up to 26 people
- Free and abundant parking
- Building signage available
- Mature landscaping with a beautiful, relaxing courtyard / patio with custom water features
- Centrally located with easy access to all major freeways and the American River Parkway
- Walking distance to various amenities including malls, shopping centers, restaurants, hotels, and Cal Expo

PROJECT REFRESH UNDERWAY!

- *Enhanced Building Common Area Entryways*
- *New Common Area Corridor LED Lighting*
- *New Suite Entry Doors*
- *New Common Area Flooring*
- *Landscape Refresh*

The depiction in the included photograph of any person, entity, sign, logo or property, other than Cushman & Wakefield's (C&W) client and the property offered by C&W, is incidental only, and is not intended to connote any affiliation, connection, association, sponsorship or approval by or between that which is incidentally depicted and C&W or its client. This listing shall not be deemed an offer to lease, sublease or sell such property; and, in the event of any transaction for such property, no commission shall be earned by or payable to any cooperating broker except if otherwise provided pursuant to the express terms, rates and conditions of C&W's agreement with its principal, if, as and when such commission (if any) is actually received from such principal. (A copy of the rates and conditions referred to above with respect to this property is available upon request.)



Lic. #00616335
400 Capitol Mall Suite 1800
Sacramento, CA 95814
www.cushmanwakefield.com

1451 RIVER PARK DRIVE

SACRAMENTO, CA

OFFICE SPACE
FOR LEASE

PROPERTY LOCATION:



AVAILABILITIES:

Suite 100	±3,315 RSF
Suite 125	±2,901 RSF
Suite 260	±2,233 RSF
Suite 213	±1,515 RSF
Suite 251	±1,425 RSF
Suite 220	±1,353 RSF - Available Q2-2018
Suite 241	±1,345 RSF
Suite 288	±1,212 RSF
Suite 285	±1,093 RSF

For more information, please contact:

SEAN MULLEN

Associate Director

(916) 288 4811

sean.mullen@cushwake.com

Lic. #01845406

BLAKE BATULA

Associate

(916) 288 4423

blake.batula@cushwake.com

Lic. #01948319



CUSHMAN &
WAKEFIELD

Lic. #00616335

400 Capitol Mall Suite 1800

Sacramento, CA 95814

www.cushmanwakefield.com

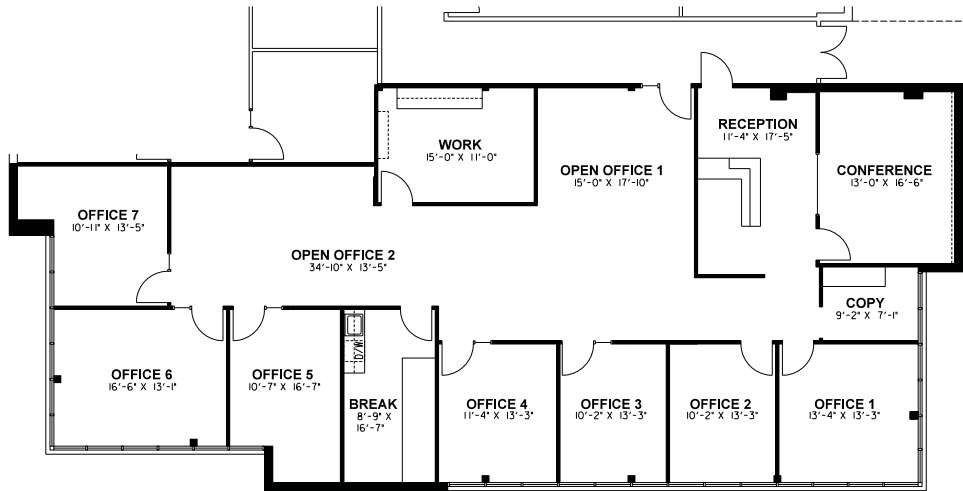
1451 RIVER PARK DRIVE

SACRAMENTO, CA

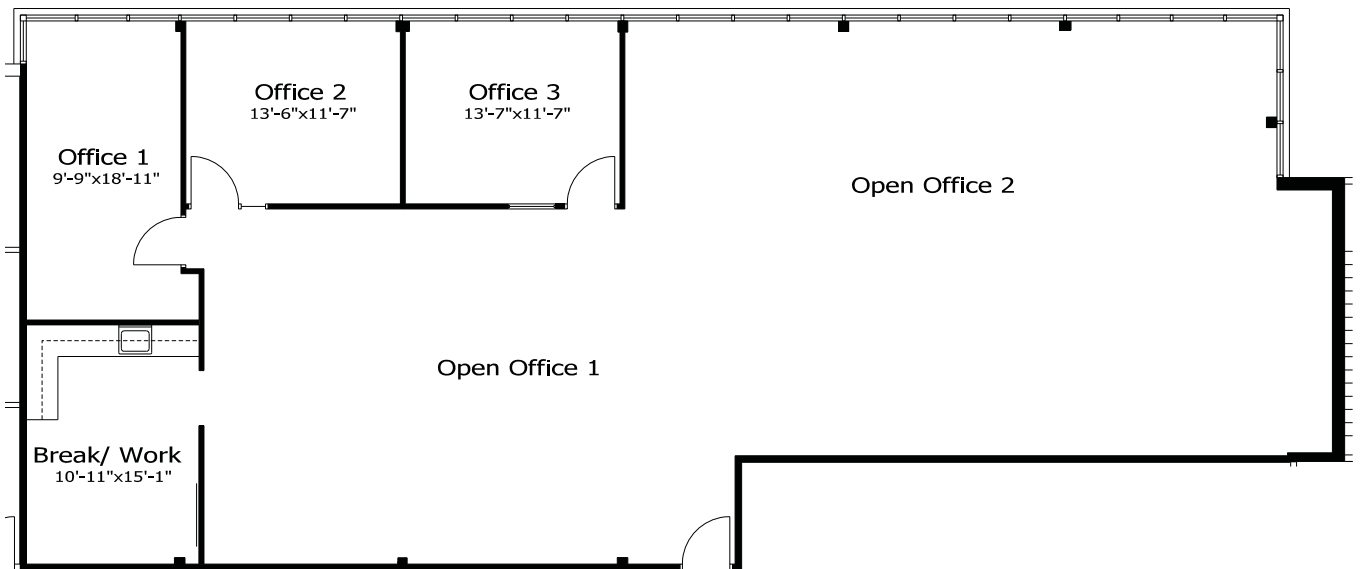
OFFICE SPACE
FOR LEASE

FLOOR PLANS:

Suite 100: ±3,315 RSF



Suite 125 ±2,901 RSF



1451 RIVER PARK DRIVE

SACRAMENTO, CA

OFFICE SPACE
FOR LEASE

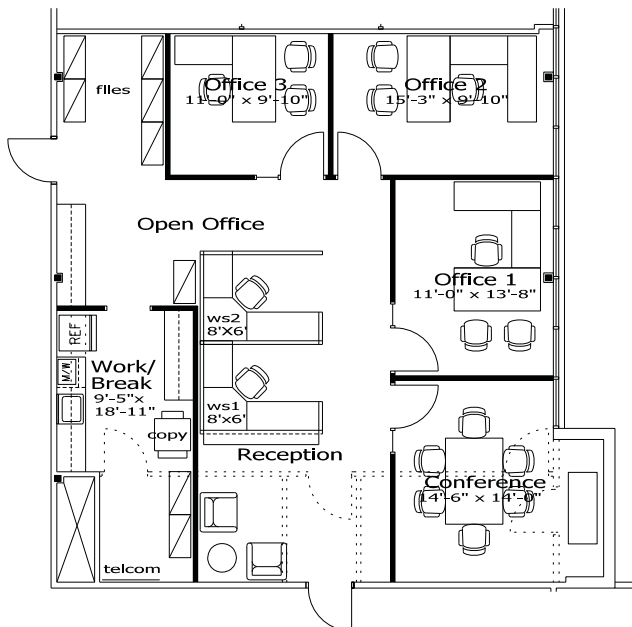
FLOOR PLANS:

Suite 260: ±2,233 RSF



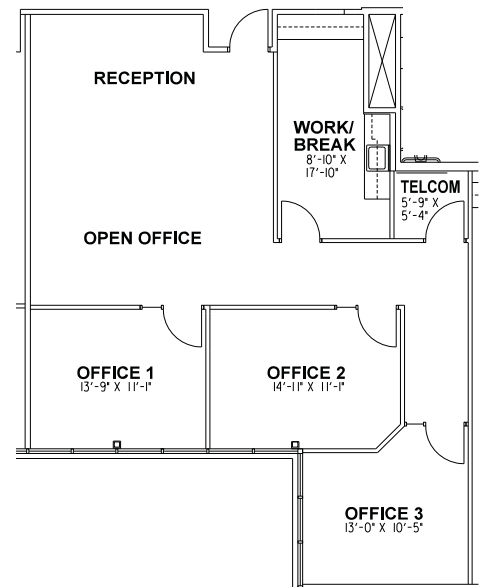
Suite 213 ±1,515 RSF

(Hypothetical configuration)



Suite 251 ±1,425 RSF

(Hypothetical configuration)



145 I RIVER PARK DRIVE

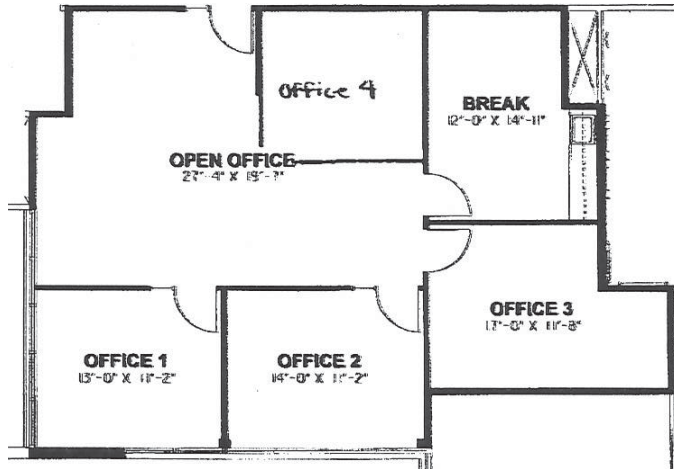
SACRAMENTO, CA

OFFICE SPACE
FOR LEASE

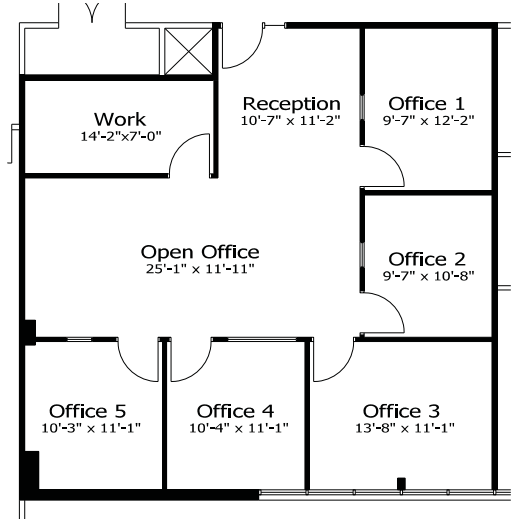
FLOOR PLANS:

Suite 220 ±1,353 RSF

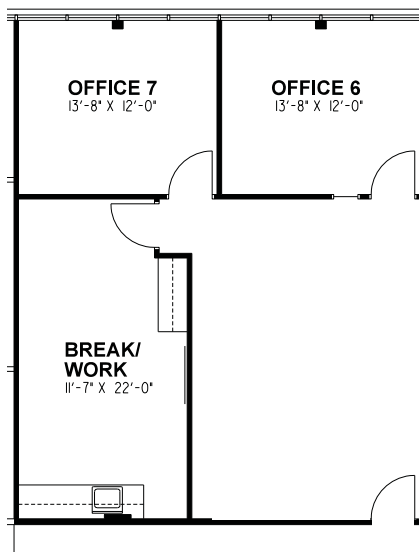
Available Q2-2018



Suite 241: ±1,345 RSF



Suite 285: ±1,093 RSF



Suite 288: ±1,212 RSF

