

5300 Elmore Avenue

Davenport, Iowa

Lease Price: \$25.00 PSF/yr (NNN)

Property Features

- “Main & Main” location with excellent visibility to 53rd and Elmore
- Outparcel to Target, Staples, PetSmart and Party City
- Located in Davenport’s regional shopping corridor
- 1,500 – 8,000 SF available Q1 2018
- Averages 57,800 VPD

For more information:

Chris Wilkins

Vice President/Director

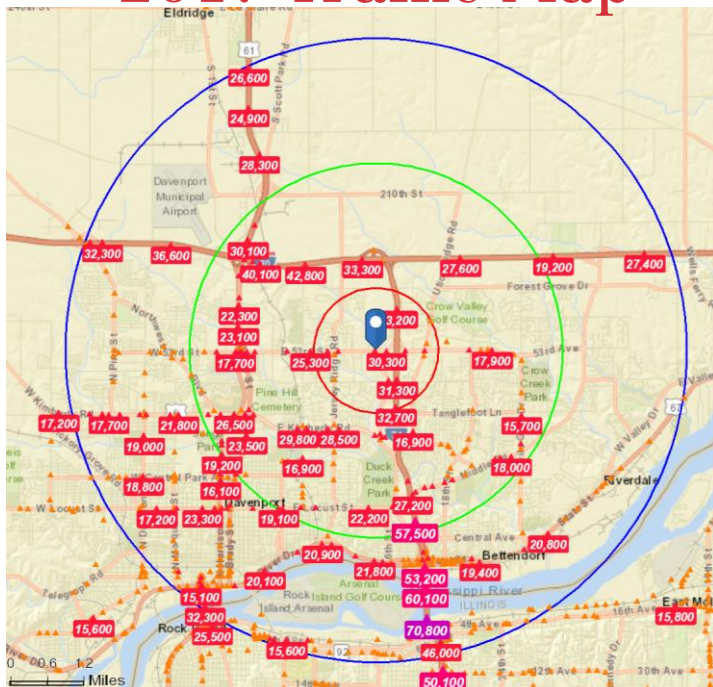
direct: 563.823.5108

call or text: 563.505.4741

email: cwilkins@ruhlcommercial.com



2017 Traffic Map



2017 Demographics

	1 Mile	3 Mile	5 Mile
Population	6,525	53,415	125,111
Households	2,546	22,565	50,959
Median Household Income	\$74,126	\$61,927	\$53,168
Average Household Income	\$100,134	\$86,012	\$75,217

THE INFORMATION CONTAINED HEREIN HAS BEEN GIVEN TO US BY THE OWNER OF THE PROPERTY OR OTHER SOURCES WE DEEM RELIABLE. WE HAVE NO REASON TO DOUBT ITS ACCURACY, BUT WE DO NOT GUARANTEE IT. ALL INFORMATION SHOULD BE VERIFIED PRIOR TO PURCHASE OR LEASE.

UPDATED: 08.2017

5111 Utica Ridge Road
Davenport, IA 52807
563.355.4000
ruhlcommercial.com