

# FOR LEASE

3929 Bridgeport Way West  
University Place, WA 98466



## CORNERSTONE CENTER

First Western Properties—Tacoma Inc. | 253.472.0404  
6402 Tacoma Mall Blvd, Tacoma, WA 98409 | fwp-inc.com

**CORNERSTONE CENTER** is adjacent to new Applebee's Restaurant & the Whole Foods anchored Village at Chambers Bay and located in a densely populated captive market demographic. The center is directly across the street from high volume Safeway and the only Trader Joe's in Pierce County.

**3929 BRIDGEPORT WAY W:**

**2,044 SF OFFICE    \$21.00 PSF    PLUS NNN**

- Open floor plan with one private office and reception/waiting room.
- kitchen that is also provides a space to act as the conference room.
- Shared bathroom with 2nd floor tenants.

**1,472 SF OFFICE    \$21.00 PSF    PLUS NNN**

- Includes three private offices, conference room, work room or additional office space, reception area and a private balcony.
- Shared bathroom with 3rd floor tenants.

**NEARBY TENANTS**



SAFeway.



# DEMOGRAPHICS

## POPULATION

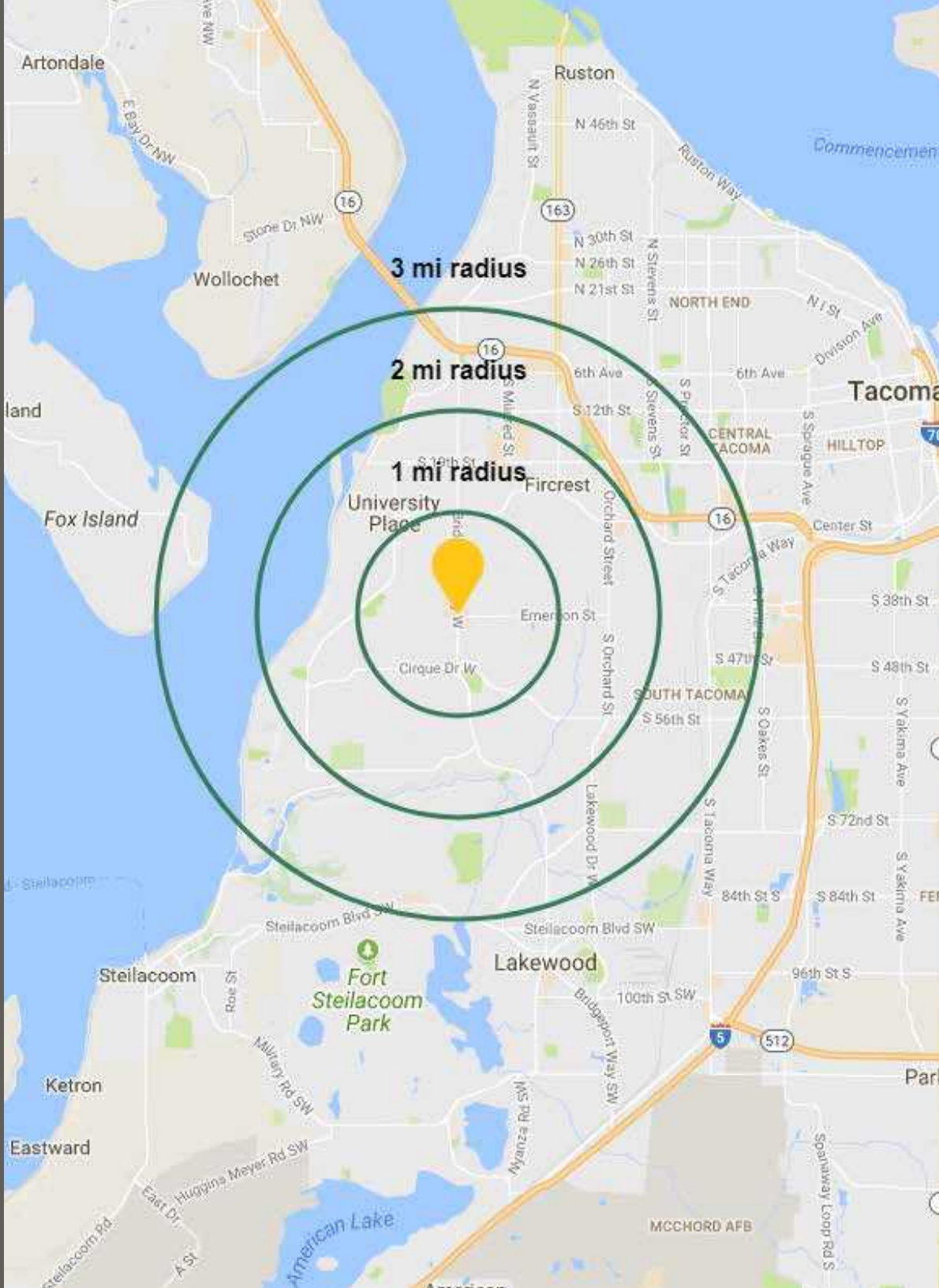
Mile 1	Mile 2	Mile 3
15,680	51,075	93,382

## AVERAGE HH INCOME

Mile 1	Mile 2	Mile 3
\$99,731	\$94,394	\$85,212

## DAYTIME POPULATION

Mile 1	Mile 2	Mile 3
9,691	29,223	64,517



SUMMARY

LOCATION DETAILS



25,000 CPD  
Bridgeport Way W



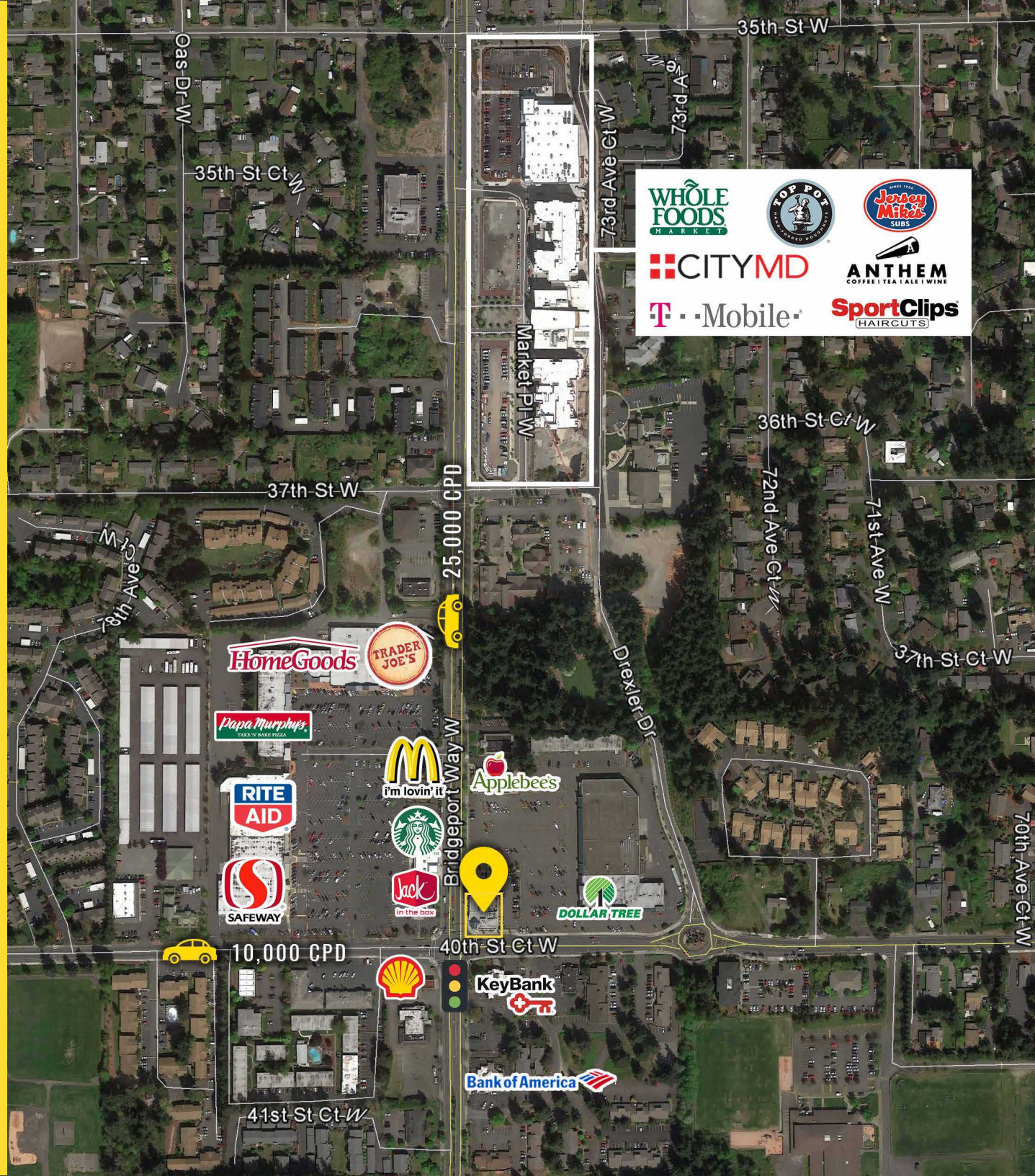
10,000 CPD  
40th St Ct W



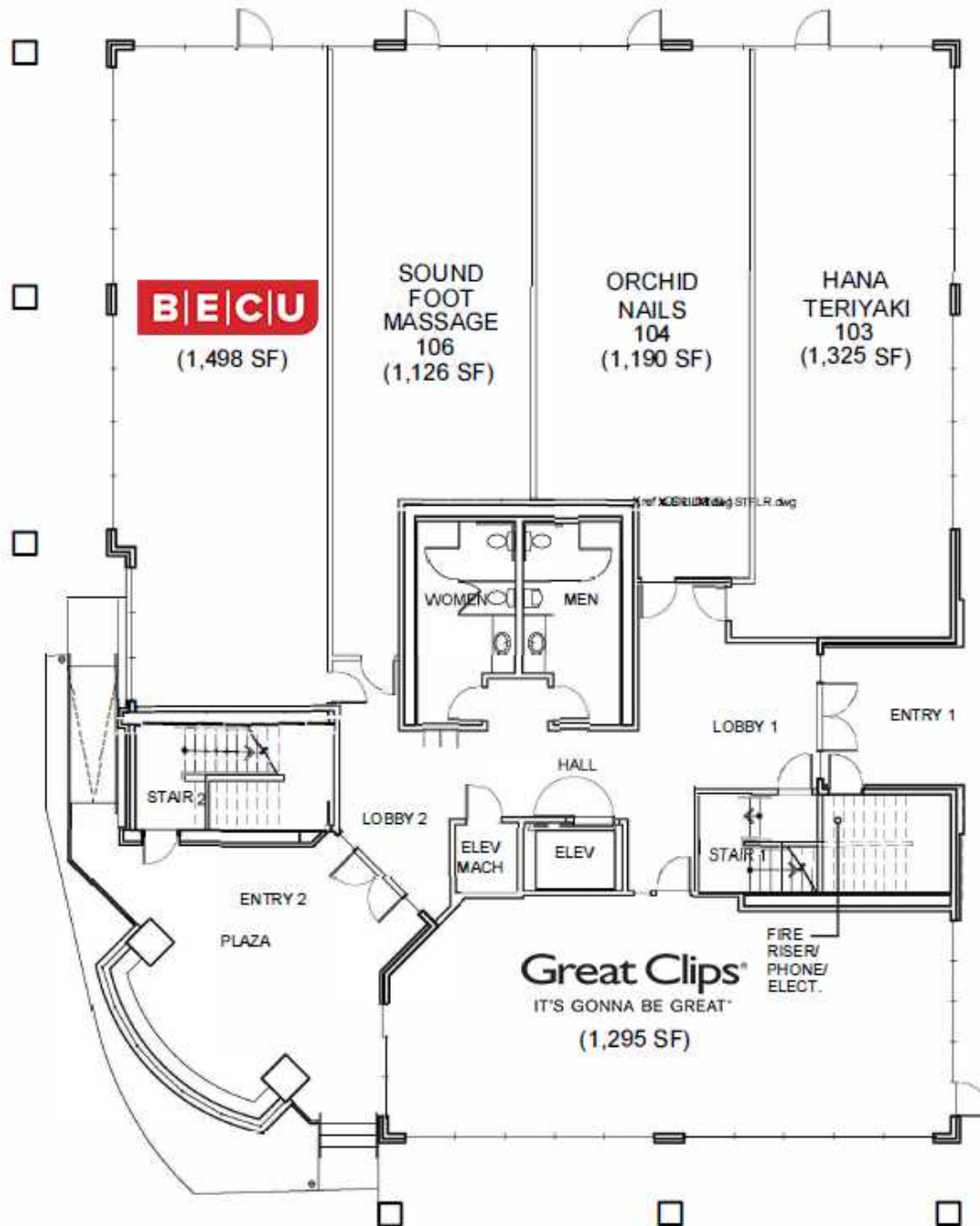
Located in the  
University Place  
Retail Core



Across the street from  
high volume Safeway



SITE PLAN - 1ST FLOOR - 100% LEASED

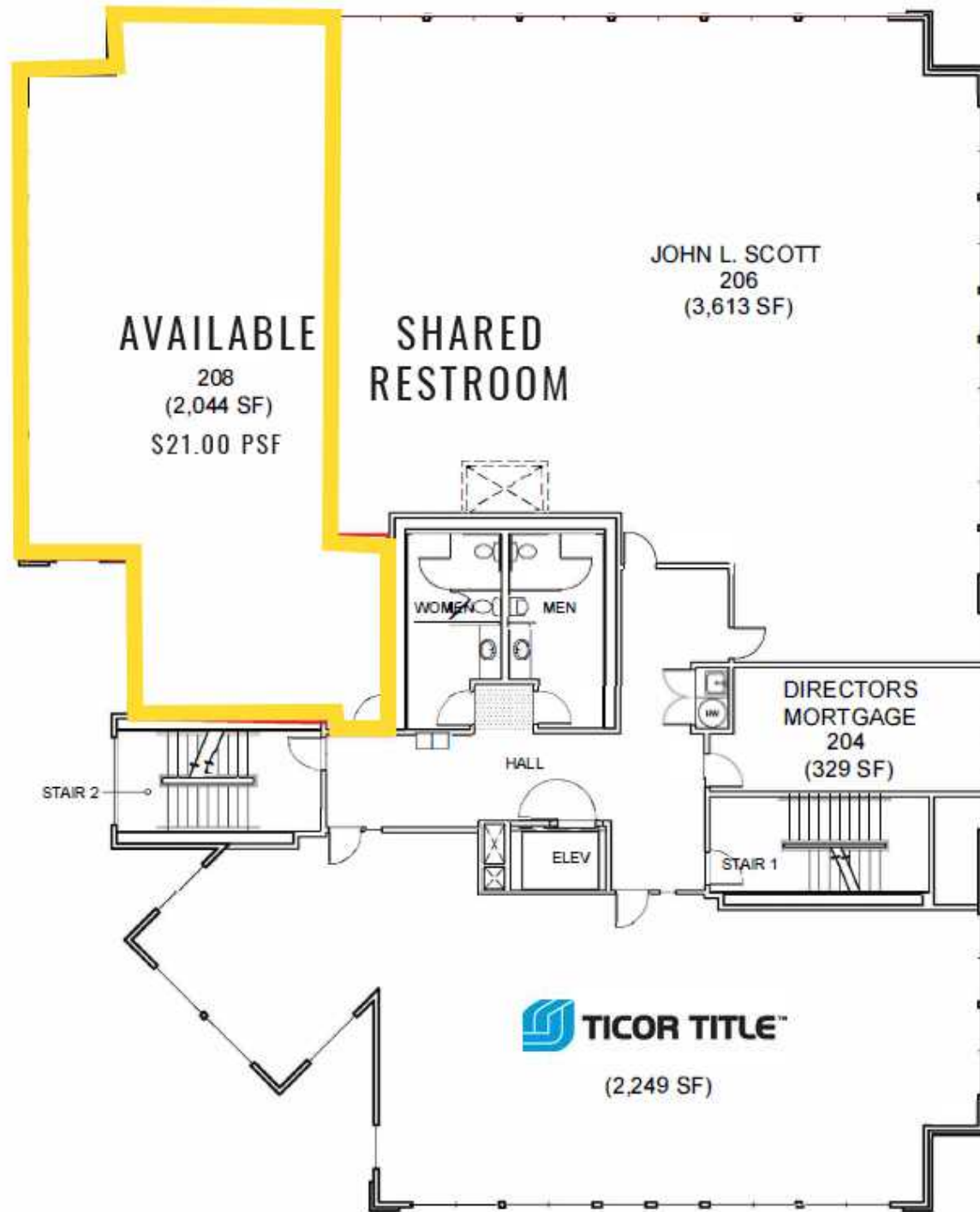


FIRST FLOOR PLAN

6,609 SQ. FT.

SCALE 1/8"=1'-0"

SITE PLAN - 2ND FLOOR



SITE PLAN - 3RD FLOOR



THIRD FLOOR PLAN

8,173 SQ. FT.

SCALE: 1/8"=1'-0"





**UNIVERSITY PLACE, WA** is located in the beautiful South Puget Sound area and is home to more than 31,500 active residents. The scenic views of the surrounding mountain ranges and access to the shores of the Puget Sound from the popular Chambers Bay Golf Course (home of the 2015 US Open), make University Place one of Pierce County's ultimate destinations for recreation and relaxation.



TACOMA | KIRKLAND | PORTLAND | SEATTLE



**RELATIONSHIP FOCUSED. RESULTS DRIVEN.**

**DON WHITTLES**

253.471.5509  
dwhittles@firstwesternproperties.com

**TIM WEBER**

253.471.5502  
tweber@firstwesternproperties.com

**BLAKE WEBER**

253.284.3646  
bweber@firstwesternproperties.com



First Western Properties—Tacoma Inc. | 253.472.0404  
6402 Tacoma Mall Blvd, Tacoma, WA 98409 | fwp-inc.com

© First Western Properties, Inc. DISCLAIMER: The above information has been secured from sources believed to be reliable, however, no representations are made to its accuracy. Prospective tenants or buyers should consult their professional advisors and conduct their own independent investigation. Properties are subject to change in price and/or availability without notice.