

For Lease Woodside Corporate Park • Greystone Two

15725 SW Greystone Court, Beaverton, Oregon



GRUBB & ELLIS
From Insight to Results



Greystone Court at Woodside Corporate Park is strategically located at the corner of 158th and Walker Road. The Class A office buildings offer first generation space ready for custom build out.

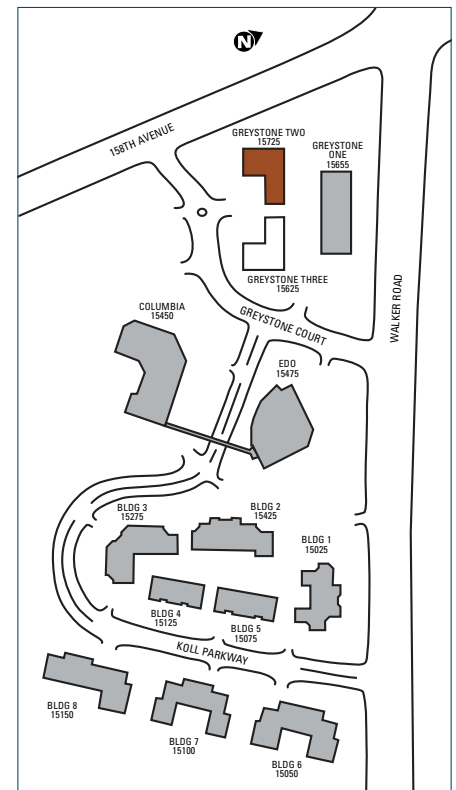
AMENITIES

- Located across from Tualatin Hills Park & Recreation Center
- Convenient on-site daycare facility
- Minimum of 4/1,000 parking
- Interior bike storage
- Showers and lockers on-site
- Adjacent to Nike World Headquarters, IBM and Tektronix
- Park-like setting
- Access to public transportation

AVAILABLE SPACE

- Suite 100 – 5,684 SF
- Suite 105 – 7,144 SF
- Suite 250 – 5,830 SF

LEASE RATE: \$19.50/SF FULL SERVICE



To learn more, please contact:

David C. Squire, SIOR

503.972.5505

david.squire@grubb-ellis.com



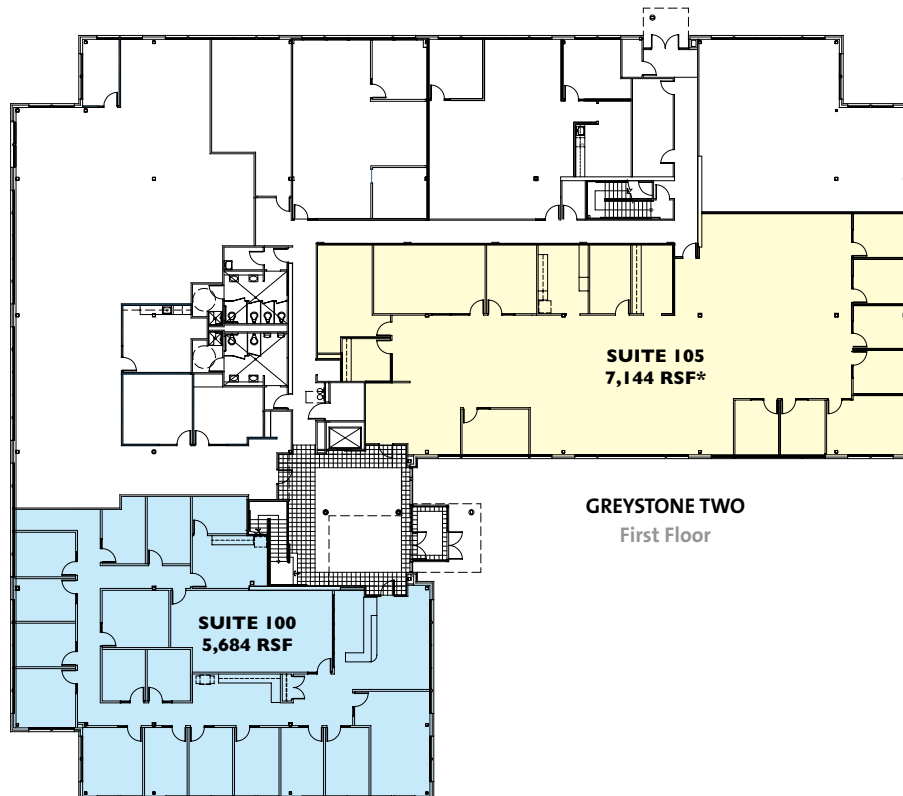
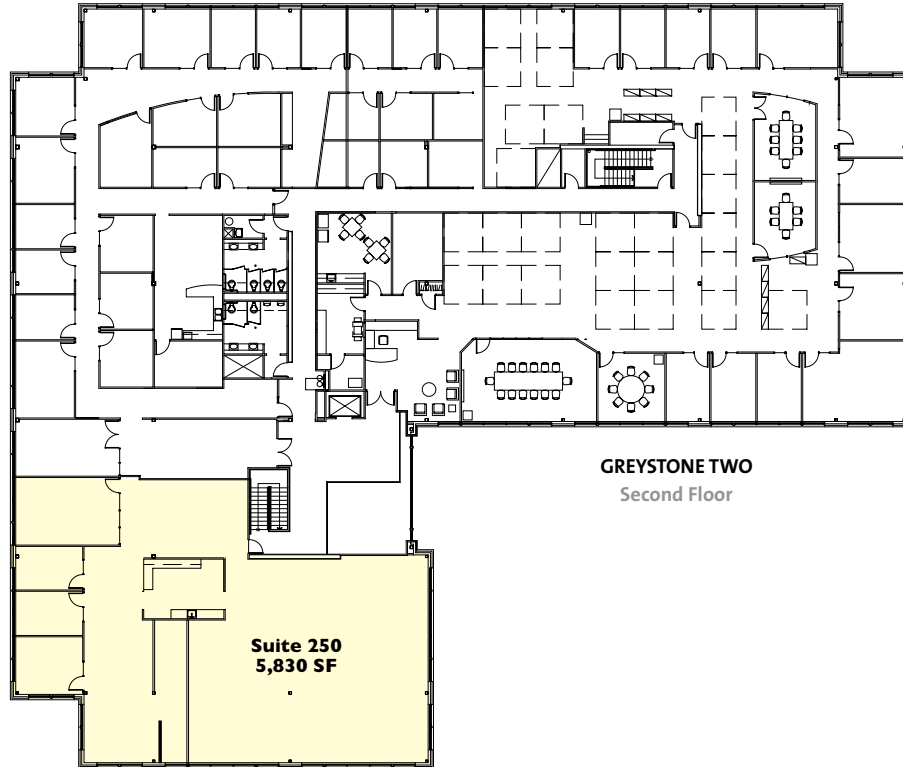
1120 NW Couch Street • Suite 350, Portland, Oregon 97209 • www.grubb-ellis.com

For Lease Woodside Corporate Park • Greystone Two

15725 SW Greystone Court, Beaverton, Oregon



GRUBB & ELLIS
From Insight to Results



The information contained herein was obtained from sources believed reliable; however, Grubb & Ellis Company makes no guarantees, warranties, or representations as to the completeness or accuracy thereof. The presentation of this property is submitted subject to errors, omissions, change of price or conditions prior to sale or lease, or withdrawal without notice.



GRUBB & ELLIS
From Insight to Results