

Office Suites for Lease

# Duane Morris Plaza

30 South 17th Street, Philadelphia, PA

## 1,489 SF to 31,609 SF Available

### Availabilities

- 2nd Floor Spec Suites: 1,845 SF and 1,489 SF
- 7th Floor: 4,805 SF
- 8th Floor: 5,279 SF
- 19th Floor: 31,609 SF  
*Available 11/1/2020*

### Best-In-Class Amenities

- Ideally located between Rittenhouse Square and the Market Street Corridor
- Steps away from the best restaurants in Philadelphia along 18th Street
- On-site Constellation Culinary Group catered Duane Morris Café
- Harper's Wine Garden located on the Western Plaza and Green Eggs Café (coming soon)
- Building Amenity Suite with Tenant Exclusive Lounge and Game Room (2nd Floor)
- Direct access parking garage
- One block away from Regional Rail access
- Convene, state-of-the-art corporate meeting spaces and conference venues (13th & 14th Floor)
- Nearby Hotels: newly completed Four Seasons, Westin, Kimpton, Sofitel and Sonesta

DUANE MORRIS PLAZA

For more information, please contact:



W. Thomas Hummel, Jr.  
Executive Vice President  
thummel@geisrealty.com  
(215) 568-2505

Thomas S. Bond  
Senior Vice President  
tbond@geisrealty.com  
(215) 568-1755

Daniel J. Moller  
Vice President  
dmoller@geisrealty.com  
(215) 701-0722

Owned by:



OAKTREE

Duane Morris Plaza // 30 South 17th Street, Suite 210, Philadelphia, PA 19103 // (215) 568-7222 Tel // (215) 568-5043 Fax // geisrealty.com

No warranty or representation, express or implied, is made as to the accuracy of the information contained herein, and the same is submitted subject to errors, omissions, change of price, rental or other conditions, prior sale, lease or financing, or withdrawal without notice, and of any special listing conditions imposed by our principals no warranties or representations are made as to the condition of the property or any hazards contained therein are any to be implied.



Office Suites for Lease

# Duane Morris Plaza

30 South 17th Street, Philadelphia, PA



For more information, please contact:



W. Thomas Hummel, Jr.  
Executive Vice President  
thummel@geisrealty.com  
(215) 568-2505

Thomas S. Bond  
Senior Vice President  
tbond@geisrealty.com  
(215) 568-1755

Daniel J. Moller  
Vice President  
dmoller@geisrealty.com  
(215) 701-0722

Owned by:



**OAKTREE**

Duane Morris Plaza // 30 South 17th Street, Suite 210, Philadelphia, PA 19103 // (215) 568-7222 Tel // (215) 568-5043 Fax // [geisrealty.com](http://geisrealty.com)

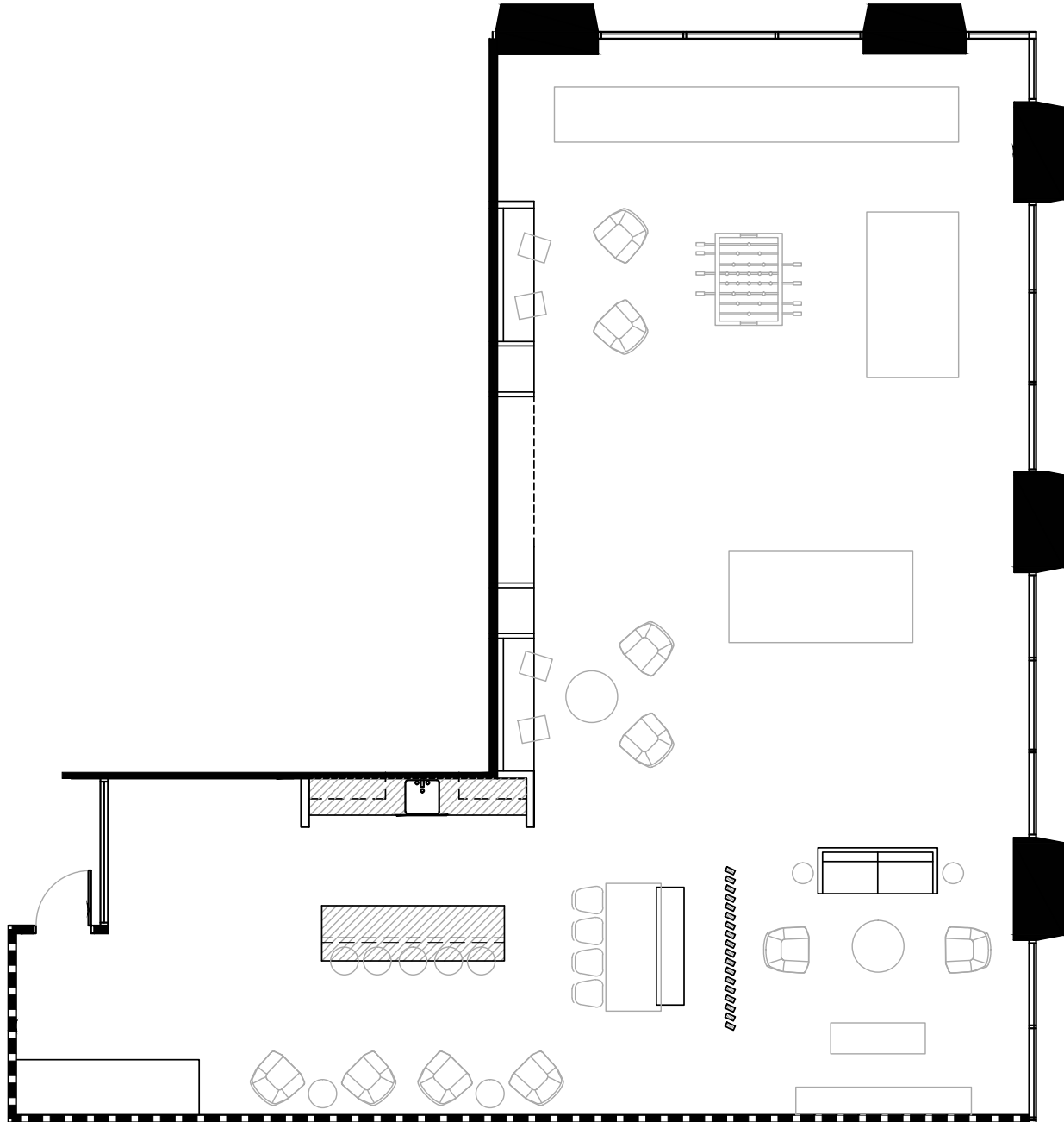
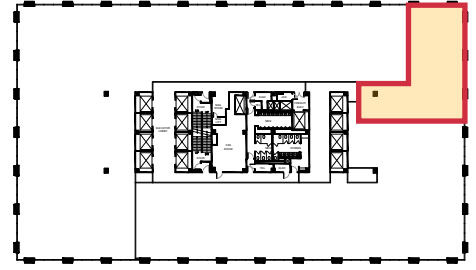
No warranty or representation, express or implied, is made as to the accuracy of the information contained herein, and the same is submitted subject to errors, omissions, change of price, rental or other conditions, prior sale, lease or financing, or withdrawal without notice, and of any special listing conditions imposed by our principals no warranties or representations are made as to the condition of the property or any hazards contained therein are any to be implied.

Office Suites for Lease

# Duane Morris Plaza

30 South 17th Street, Philadelphia, PA

## 2nd Floor: Building Amenity Suite



For more information, please contact:



W. Thomas Hummel, Jr.  
Executive Vice President  
thummel@geisrealty.com  
(215) 568-2505

Thomas S. Bond  
Senior Vice President  
tbond@geisrealty.com  
(215) 568-1755

Daniel J. Moller  
Vice President  
dmoller@geisrealty.com  
(215) 701-0722

Owned by:



OAKTREE

Duane Morris Plaza // 30 South 17th Street, Suite 210, Philadelphia, PA 19103 // (215) 568-7222 Tel // (215) 568-5043 Fax // geisrealty.com

No warranty or representation, express or implied, is made as to the accuracy of the information contained herein, and the same is submitted subject to errors, omissions, change of price, rental or other conditions, prior sale, lease or financing, or withdrawal without notice, and of any special listing conditions imposed by our principals no warranties or representations are made as to the condition of the property or any hazards contained therein are any to be implied.

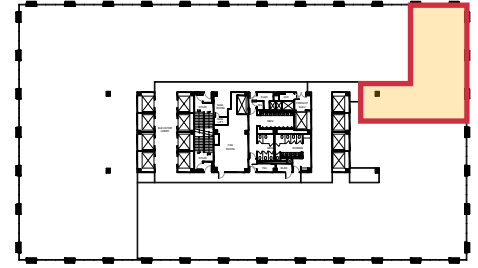


Office Suites for Lease

# Duane Morris Plaza

30 South 17th Street, Philadelphia, PA

## 2nd Floor: Building Amenity Suite



For more information, please contact:



W. Thomas Hummel, Jr.  
Executive Vice President  
thummel@geisrealty.com  
(215) 568-2505

Thomas S. Bond  
Senior Vice President  
tbond@geisrealty.com  
(215) 568-1755

Daniel J. Moller  
Vice President  
dmoller@geisrealty.com  
(215) 701-0722

Owned by:



OAKTREE

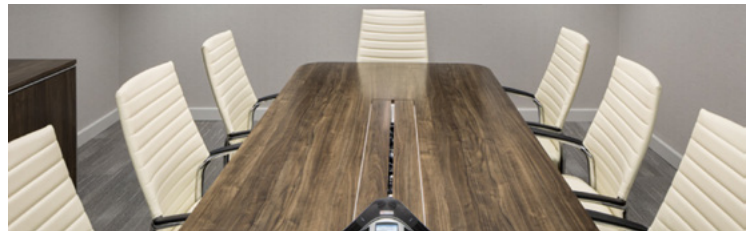
Duane Morris Plaza // 30 South 17th Street, Suite 210, Philadelphia, PA 19103 // (215) 568-7222 Tel // (215) 568-5043 Fax // geisrealty.com

No warranty or representation, express or implied, is made as to the accuracy of the information contained herein, and the same is submitted subject to errors, omissions, change of price, rental or other conditions, prior sale, lease or financing, or withdrawal without notice, and of any special listing conditions imposed by our principals no warranties or representations are made as to the condition of the property or any hazards contained therein are any to be implied.

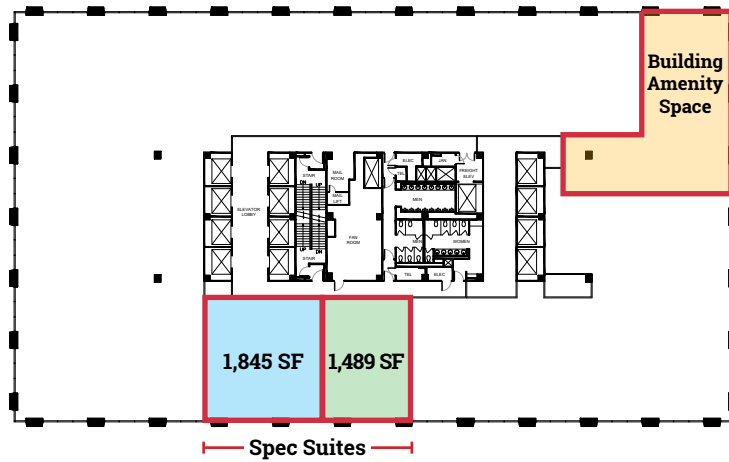
Office Suites for Lease

# Duane Morris Plaza

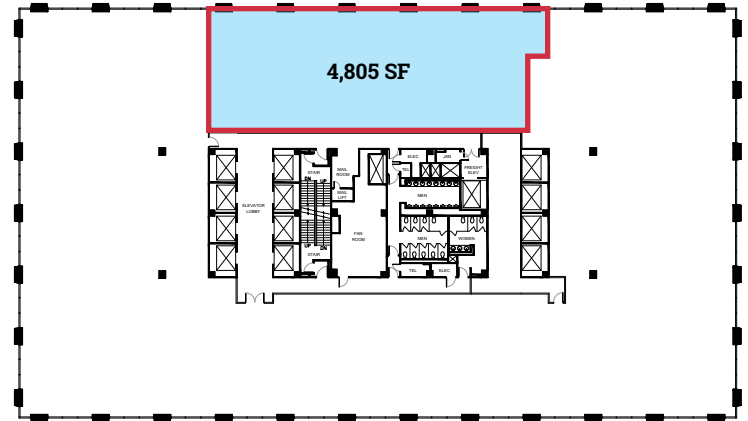
30 South 17th Street, Philadelphia, PA



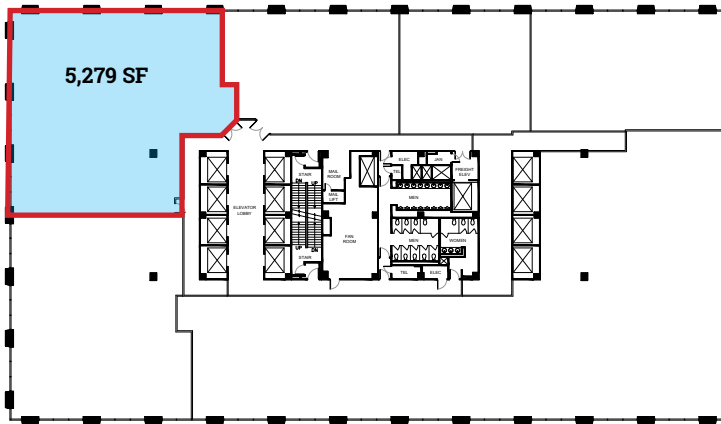
2nd Floor



7th Floor



8th Floor



19th Floor: 31,609 SF



For more information, please contact:



W. Thomas Hummel, Jr.  
Executive Vice President  
thummel@geisrealty.com  
(215) 568-2505

Thomas S. Bond  
Senior Vice President  
tbond@geisrealty.com  
(215) 568-1755

Daniel J. Moller  
Vice President  
dmoller@geisrealty.com  
(215) 701-0722

Owned by:



OAKTREE

Duane Morris Plaza // 30 South 17th Street, Suite 210, Philadelphia, PA 19103 // (215) 568-7222 Tel // (215) 568-5043 Fax // geisrealty.com

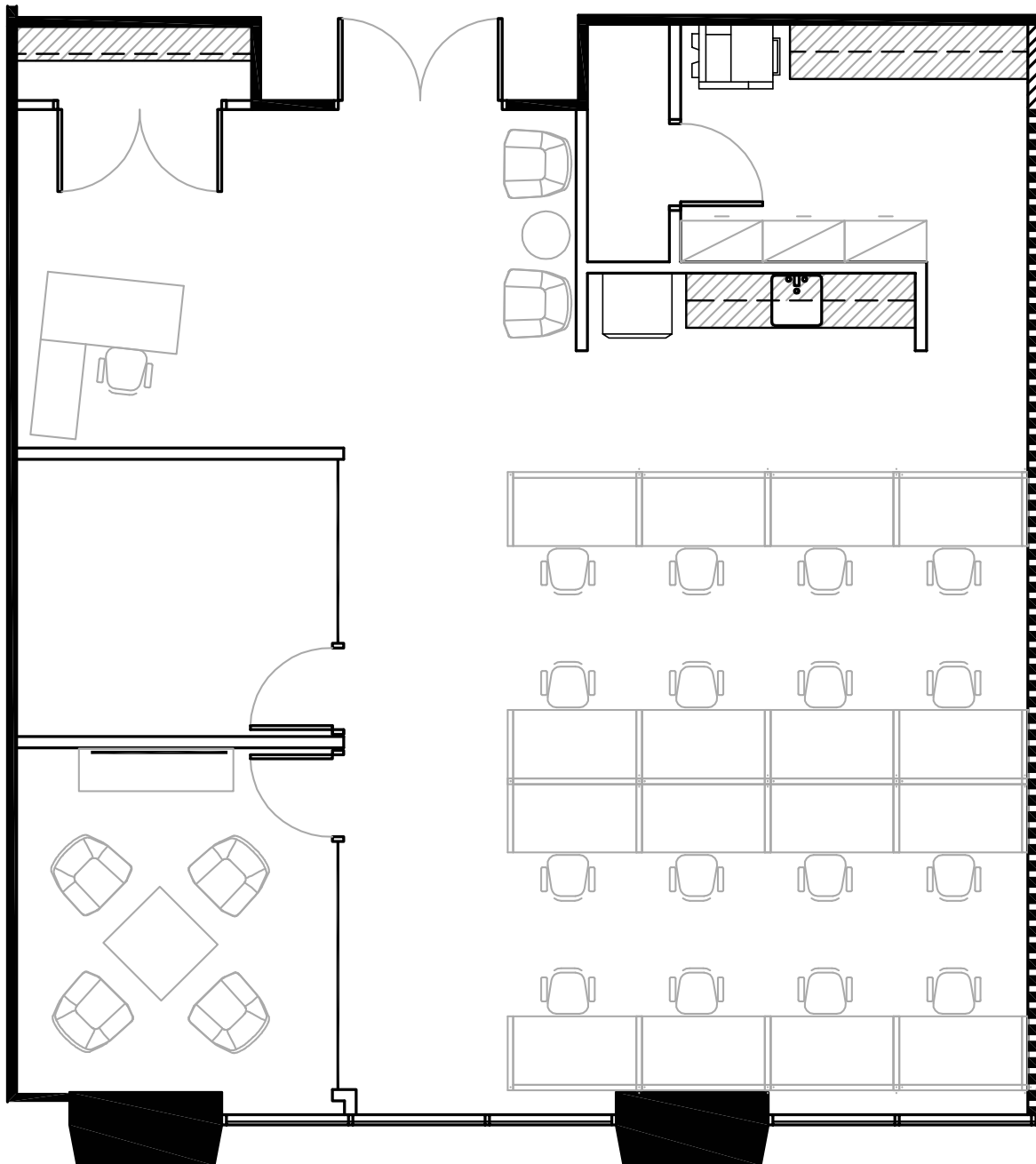
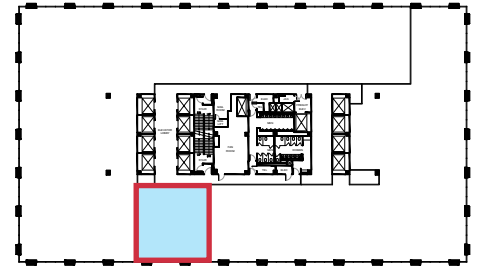
No warranty or representation, express or implied, is made as to the accuracy of the information contained herein, and the same is submitted subject to errors, omissions, change of price, rental or other conditions, prior sale, lease or financing, or withdrawal without notice, and of any special listing conditions imposed by our principals no warranties or representations are made as to the condition of the property or any hazards contained therein are any to be implied.

Office Suites for Lease

# Duane Morris Plaza

30 South 17th Street, Philadelphia, PA

**2nd Floor  
Spec Suite:  
1,845 SF**



For more information, please contact:



W. Thomas Hummel, Jr.  
Executive Vice President  
thummel@geisrealty.com  
(215) 568-2505

Thomas S. Bond  
Senior Vice President  
tbond@geisrealty.com  
(215) 568-1755

Daniel J. Moller  
Vice President  
dmoller@geisrealty.com  
(215) 701-0722

Owned by:



**OAKTREE**

Duane Morris Plaza // 30 South 17th Street, Suite 210, Philadelphia, PA 19103 // (215) 568-7222 Tel // (215) 568-5043 Fax // [geisrealty.com](http://geisrealty.com)

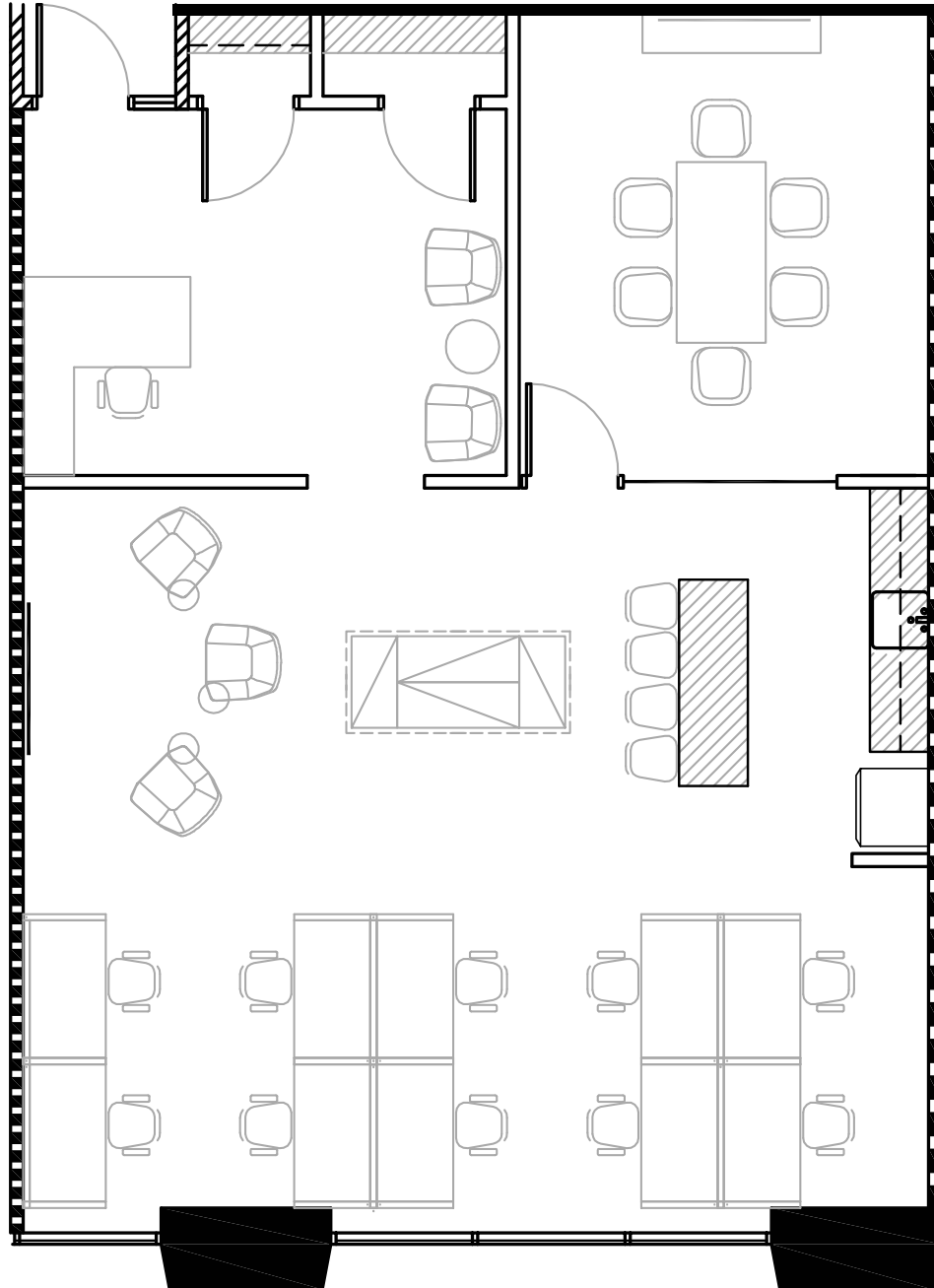
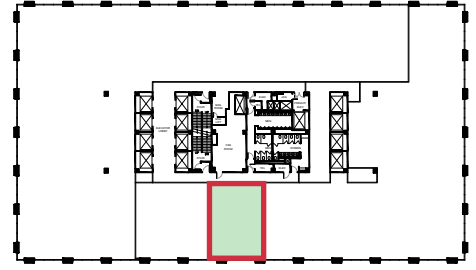
No warranty or representation, express or implied, is made as to the accuracy of the information contained herein, and the same is submitted subject to errors, omissions, change of price, rental or other conditions, prior sale, lease or financing, or withdrawal without notice, and of any special listing conditions imposed by our principals no warranties or representations are made as to the condition of the property or any hazards contained therein are any to be implied.

Office Suites for Lease

# Duane Morris Plaza

30 South 17th Street, Philadelphia, PA

**2nd Floor  
Spec Suite:  
1,489 SF**



For more information, please contact:



W. Thomas Hummel, Jr.  
Executive Vice President  
thummel@geisrealty.com  
(215) 568-2505

Thomas S. Bond  
Senior Vice President  
tbond@geisrealty.com  
(215) 568-1755

Daniel J. Moller  
Vice President  
dmoller@geisrealty.com  
(215) 701-0722

Owned by:



**OAKTREE**

Duane Morris Plaza // 30 South 17th Street, Suite 210, Philadelphia, PA 19103 // (215) 568-7222 Tel // (215) 568-5043 Fax // geisrealty.com

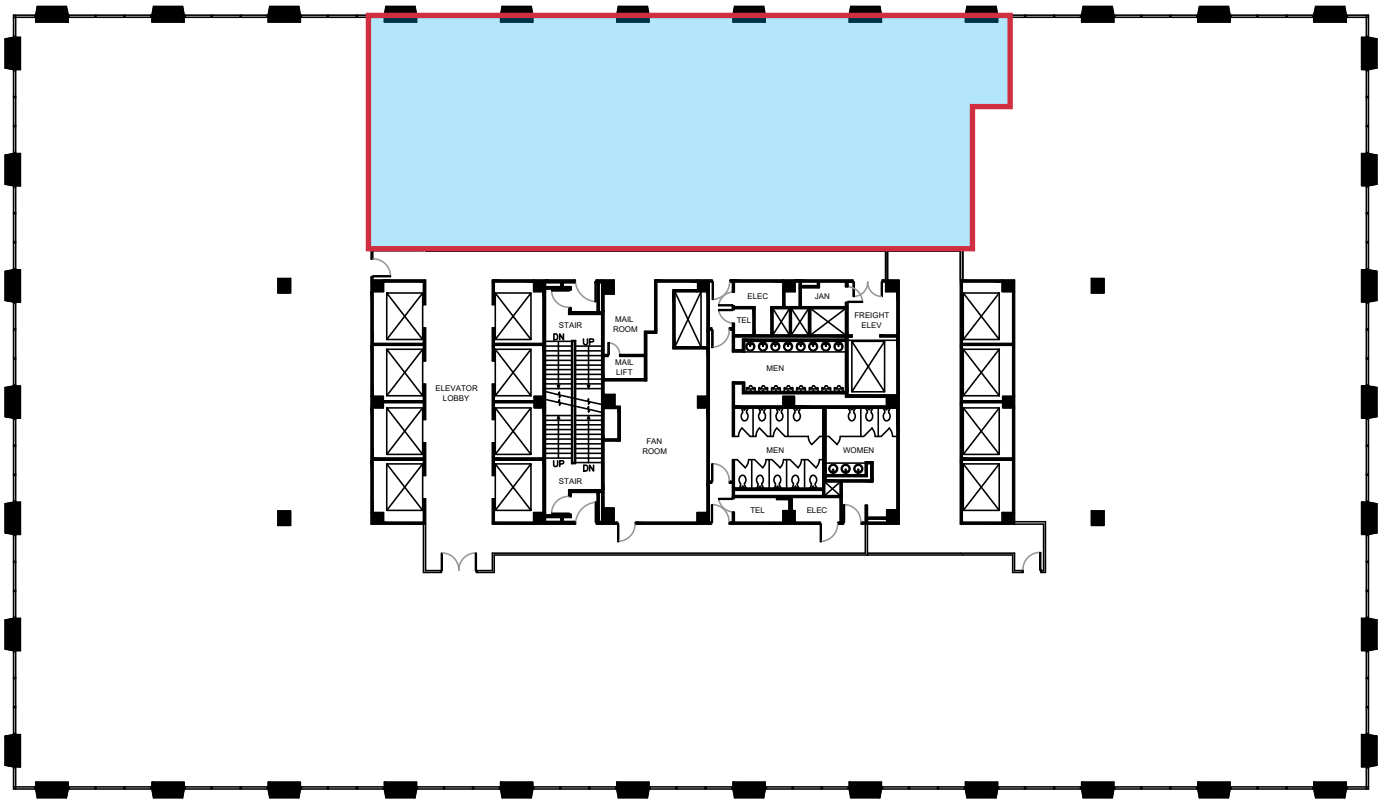
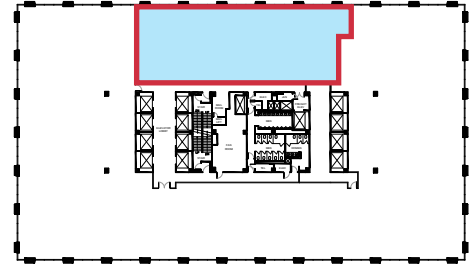
No warranty or representation, express or implied, is made as to the accuracy of the information contained herein, and the same is submitted subject to errors, omissions, change of price, rental or other conditions, prior sale, lease or financing, or withdrawal without notice, and of any special listing conditions imposed by our principals no warranties or representations are made as to the condition of the property or any hazards contained therein are any to be implied.

Office Suites for Lease

# Duane Morris Plaza

30 South 17th Street, Philadelphia, PA

**7th Floor:  
4,805 SF**



For more information, please contact:



W. Thomas Hummel, Jr.  
Executive Vice President  
thummel@geisrealty.com  
(215) 568-2505

Thomas S. Bond  
Senior Vice President  
tbond@geisrealty.com  
(215) 568-1755

Daniel J. Moller  
Vice President  
dmoller@geisrealty.com  
(215) 701-0722

Owned by:



**OAKTREE**

Duane Morris Plaza // 30 South 17th Street, Suite 210, Philadelphia, PA 19103 // (215) 568-7222 Tel // (215) 568-5043 Fax // geisrealty.com

No warranty or representation, express or implied, is made as to the accuracy of the information contained herein, and the same is submitted subject to errors, omissions, change of price, rental or other conditions, prior sale, lease or financing, or withdrawal without notice, and of any special listing conditions imposed by our principals no warranties or representations are made as to the condition of the property or any hazards contained therein are any to be implied.

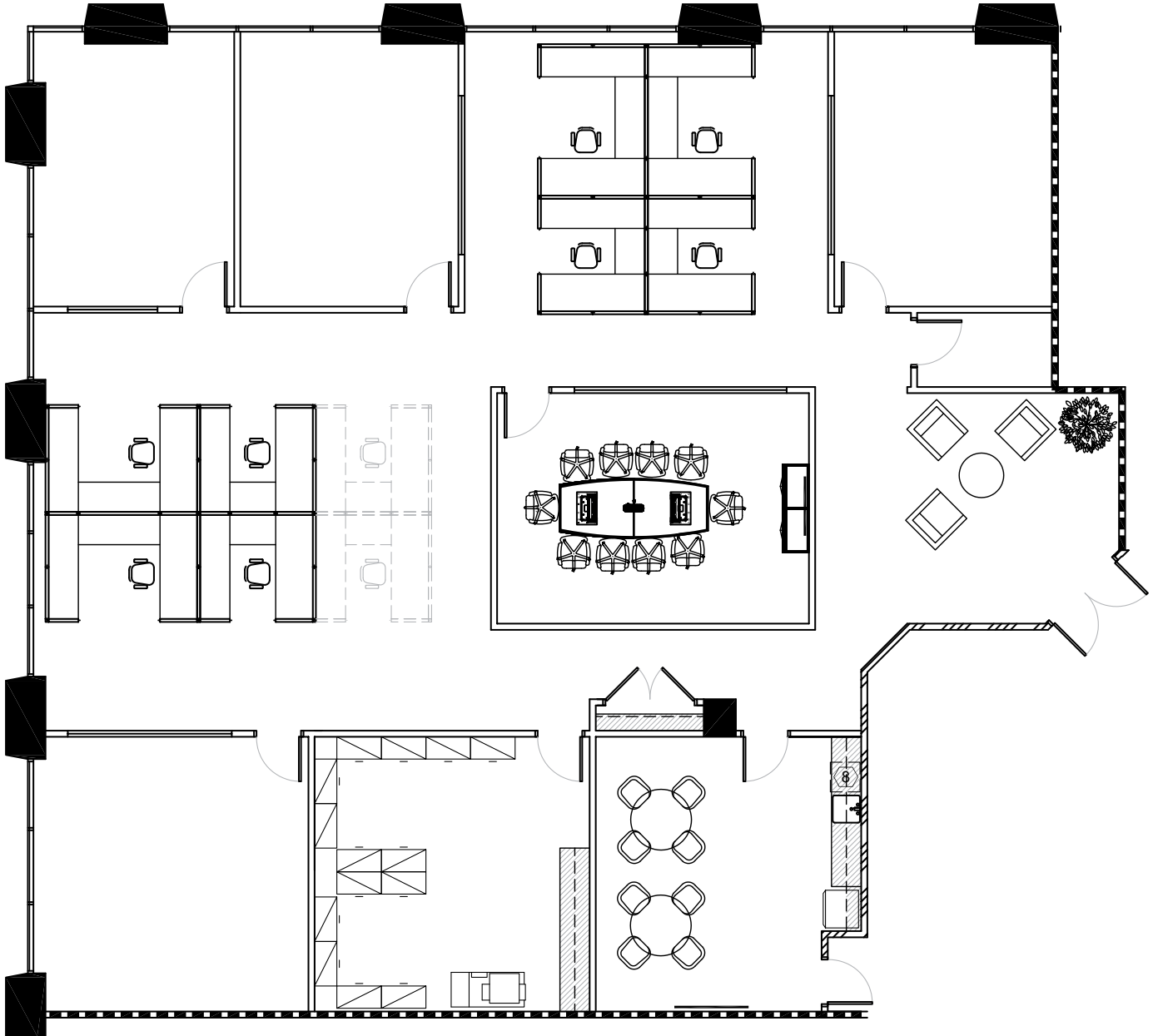
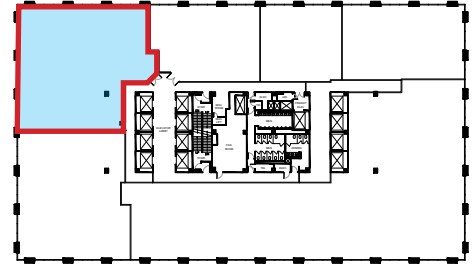


Office Suites for Lease

# Duane Morris Plaza

30 South 17th Street, Philadelphia, PA

**8th Floor:  
5,279 SF**



For more information, please contact:



W. Thomas Hummel, Jr.  
Executive Vice President  
thummel@geisrealty.com  
(215) 568-2505

Thomas S. Bond  
Senior Vice President  
tbond@geisrealty.com  
(215) 568-1755

Daniel J. Moller  
Vice President  
dmoller@geisrealty.com  
(215) 701-0722

Owned by:



**OAKTREE**

Duane Morris Plaza // 30 South 17th Street, Suite 210, Philadelphia, PA 19103 // (215) 568-7222 Tel // (215) 568-5043 Fax // geisrealty.com

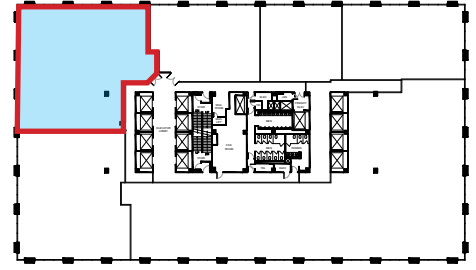
No warranty or representation, express or implied, is made as to the accuracy of the information contained herein, and the same is submitted subject to errors, omissions, change of price, rental or other conditions, prior sale, lease or financing, or withdrawal without notice, and of any special listing conditions imposed by our principals no warranties or representations are made as to the condition of the property or any hazards contained therein are any to be implied.

Office Suites for Lease

# Duane Morris Plaza

30 South 17th Street, Philadelphia, PA

**8th Floor:  
5,279 SF**



For more information, please contact:



W. Thomas Hummel, Jr.  
Executive Vice President  
thummel@geisrealty.com  
(215) 568-2505

Thomas S. Bond  
Senior Vice President  
tbond@geisrealty.com  
(215) 568-1755

Daniel J. Moller  
Vice President  
dmoller@geisrealty.com  
(215) 701-0722

Owned by:



Duane Morris Plaza // 30 South 17th Street, Suite 210, Philadelphia, PA 19103 // (215) 568-7222 Tel // (215) 568-5043 Fax // geisrealty.com

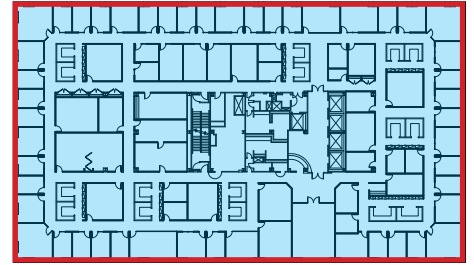
No warranty or representation, express or implied, is made as to the accuracy of the information contained herein, and the same is submitted subject to errors, omissions, change of price, rental or other conditions, prior sale, lease or financing, or withdrawal without notice, and of any special listing conditions imposed by our principals no warranties or representations are made as to the condition of the property or any hazards contained therein are any to be implied.

Office Suites for Lease

# Duane Morris Plaza

30 South 17th Street, Philadelphia, PA

**19th Floor:**  
**31,609 SF**



For more information, please contact:



W. Thomas Hummel, Jr.  
Executive Vice President  
thummel@geisrealty.com  
(215) 568-2505

Thomas S. Bond  
Senior Vice President  
tbond@geisrealty.com  
(215) 568-1755

Daniel J. Moller  
Vice President  
dmoller@geisrealty.com  
(215) 701-0722

Owned by:



**OAKTREE**

Duane Morris Plaza // 30 South 17th Street, Suite 210, Philadelphia, PA 19103 // (215) 568-7222 Tel // (215) 568-5043 Fax // [geisrealty.com](http://geisrealty.com)

No warranty or representation, express or implied, is made as to the accuracy of the information contained herein, and the same is submitted subject to errors, omissions, change of price, rental or other conditions, prior sale, lease or financing, or withdrawal without notice, and of any special listing conditions imposed by our principals no warranties or representations are made as to the condition of the property or any hazards contained therein are any to be implied.