

NORTH ATTLEBORO, MA

1255 S Washington Street



## Former Babies R' Us 36,700 SF

- Adjacent to Target
- Fully signalized access
- 33,500 ADT on Route 1
- Regional draw
- High ceilings

Jim Bagley

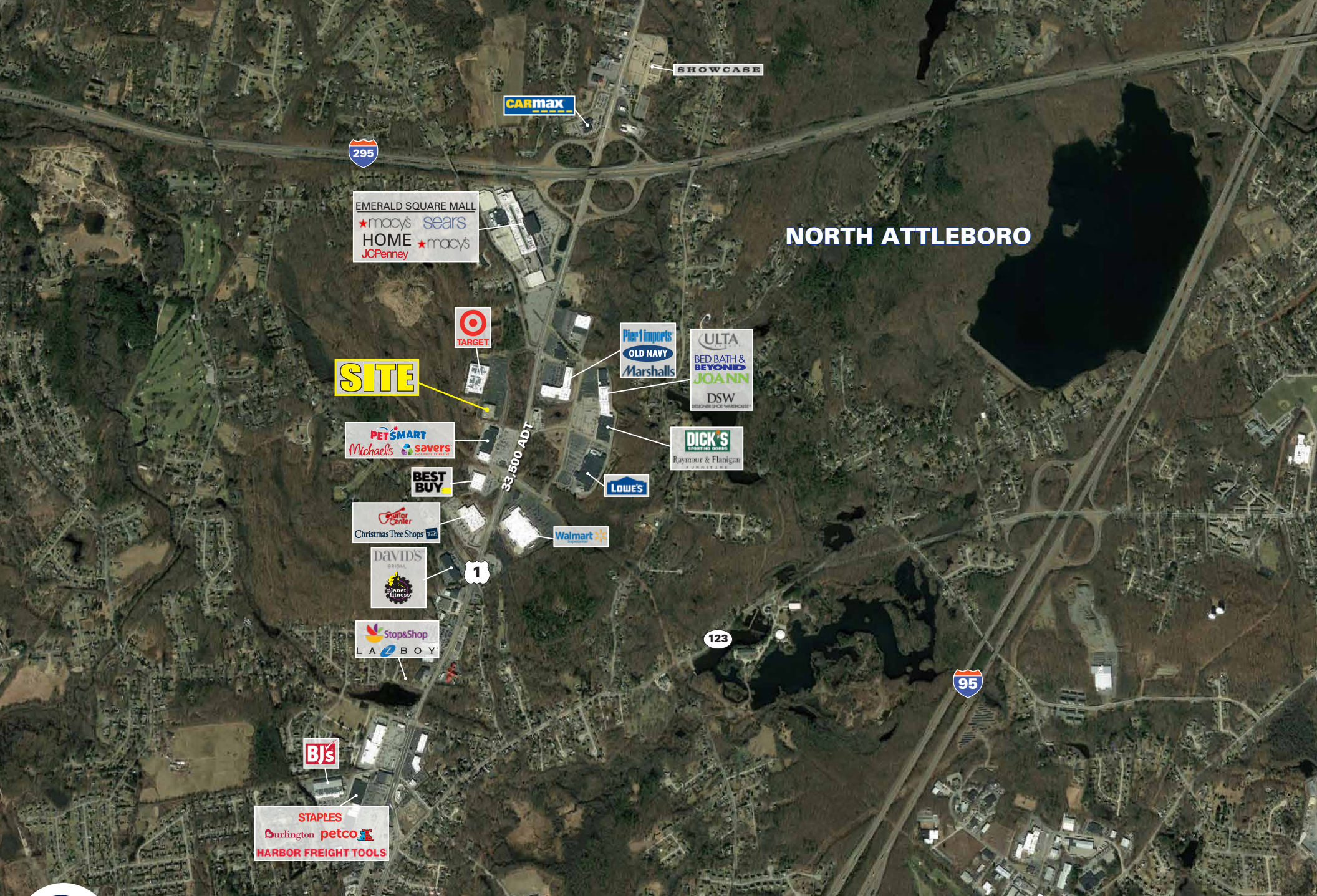
617.239.3642

[jbagley@atlanticretail.com](mailto:jbagley@atlanticretail.com)

ATLANTA | BOSTON | CHARLOTTE | LOS ANGELES | PITTSBURGH | WEST PALM BEACH

[ATLANTICRETAIL.COM](http://ATLANTICRETAIL.COM)

© ATLANTIC RETAIL 2020 The information above has been obtained from sources believed reliable. While we do not doubt its accuracy, we have not verified it and make no guarantee, warranty or representation about it.



# NORTH ATTLEBORO

**SITE**

33,500 ADT



NORTH ATTLEBORO, MA  
1255 S Washington Street

Jim Bagley  
617.239.3642  
jbagley@atlanticretail.com

ATLANTICRETAIL.COM



**SITE**

**PYLON SIGN**



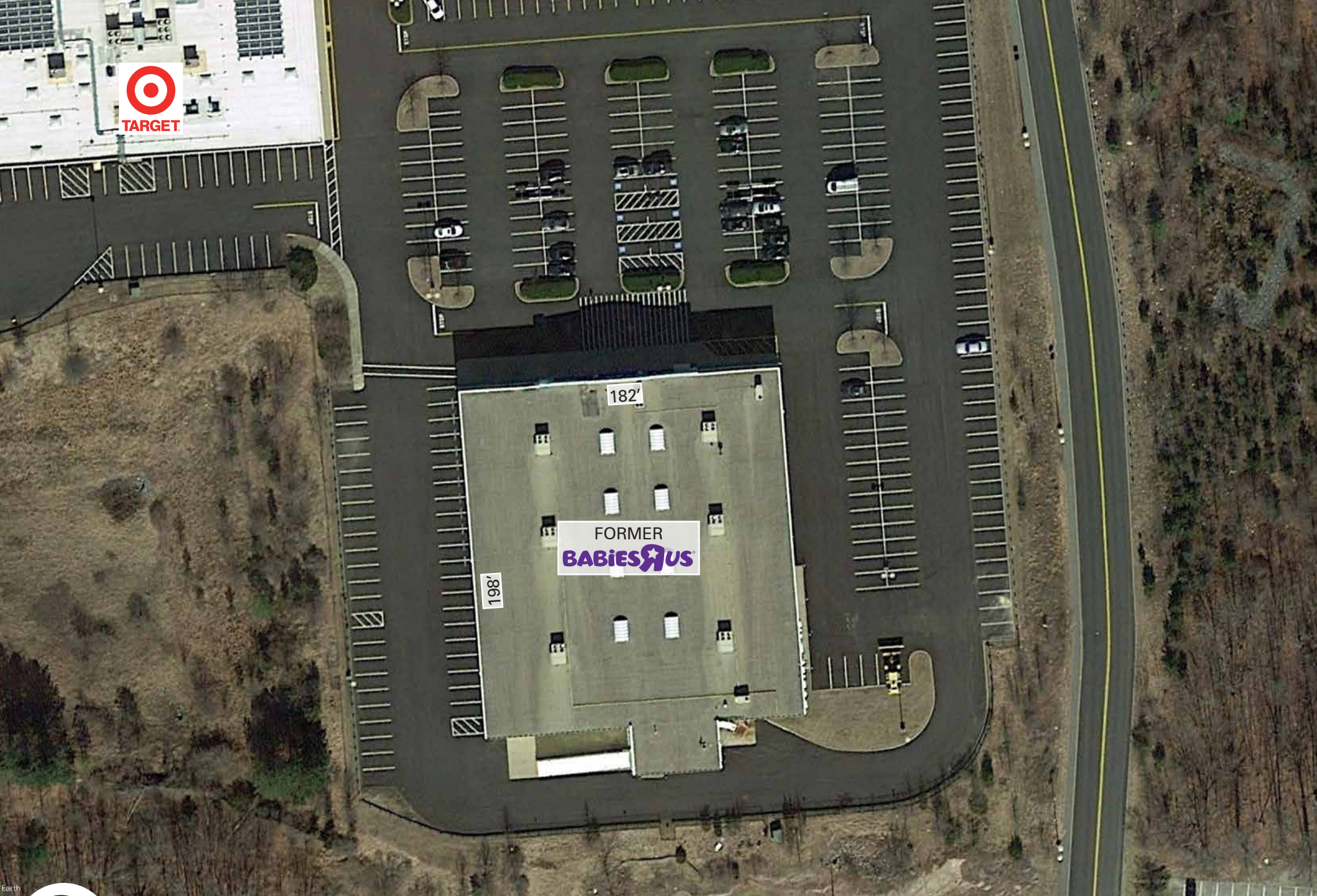
NORTH ATTLEBORO, MA  
1255 S Washington Street

Jim Bagley  
617.239.3642  
jbagley@atlanticretail.com

ATLANTICRETAIL.COM

ZOOM AERIAL

© ATLANTIC RETAIL 2020



FORMER  
**BABIES R US**

182'

198'



NORTH ATTLEBORO, MA  
1255 S Washington Street

Jim Bagley

617.239.3642  
jbagley@atlanticretail.com

ATLANTICRETAIL.COM

SITE AERIAL

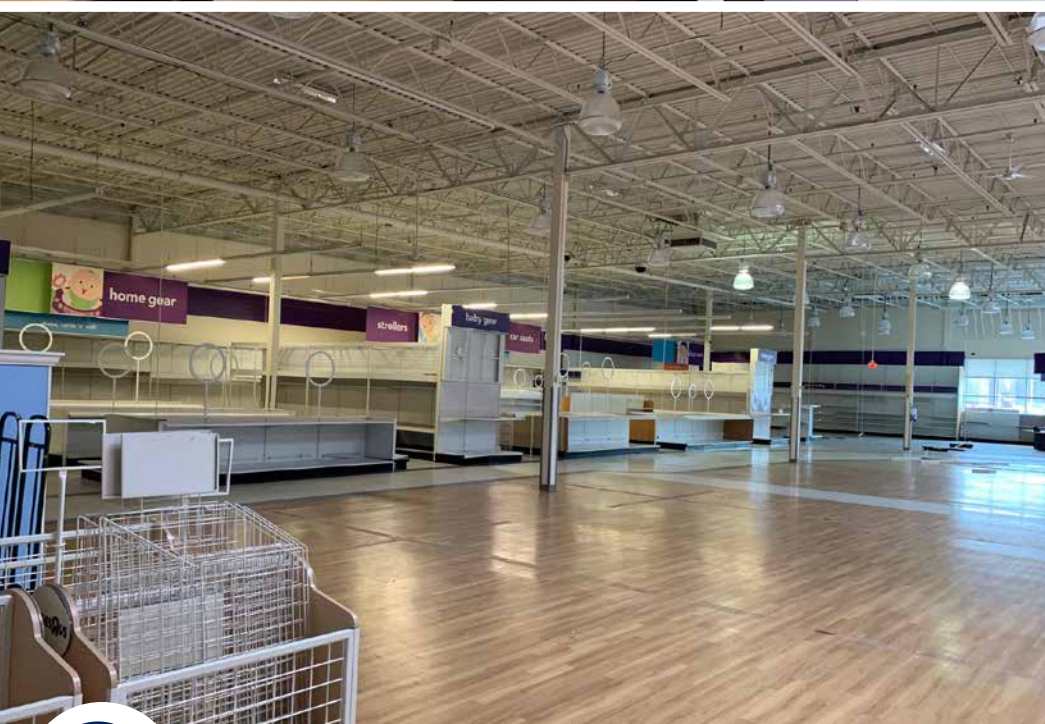
© ATLANTIC RETAIL 2020



NORTH ATTLEBORO, MA  
1255 S Washington Street

Jim Bagley  
617.239.3642  
jbagley@atlanticretail.com

ATLANTICRETAIL.COM



NORTH ATTLEBORO, MA  
1255 S Washington Street

Jim Bagley  
617.239.3642  
jbagley@atlanticretail.com

ATLANTICRETAIL.COM

SITE PHOTOS

© ATLANTIC RETAIL 2020