

NEWPORT ROAD BERLIN TWP, MICHIGAN

LAND FOR SALE
13.11 Acres Available



**SIGNATURE
ASSOCIATES**
KNOW SIGNATURE | KNOW RESULTS



PROPERTY FEATURES

- 13.11 acres available
- Zoned PD
- Site plan approved for 88 units, many with golf course frontage
- Water and sewer in area
- Close to I-75 & I-275 expressways
- Asking Price: \$550,000 (\$41,952.71/acre)



For more information, please contact:

RICK BIRDSALL
(248) 799 3145

rbirdsall@signatureassociates.com

BRAD VIERGEVER
(248) 799 3146

bviergever@signatureassociates.com

SIGNATURE ASSOCIATES
One Towne Square, Suite 1200
Southfield, MI 48076
www.signatureassociates.com

13.11
Acres
AVAILABLE

www.signatureassociates.com

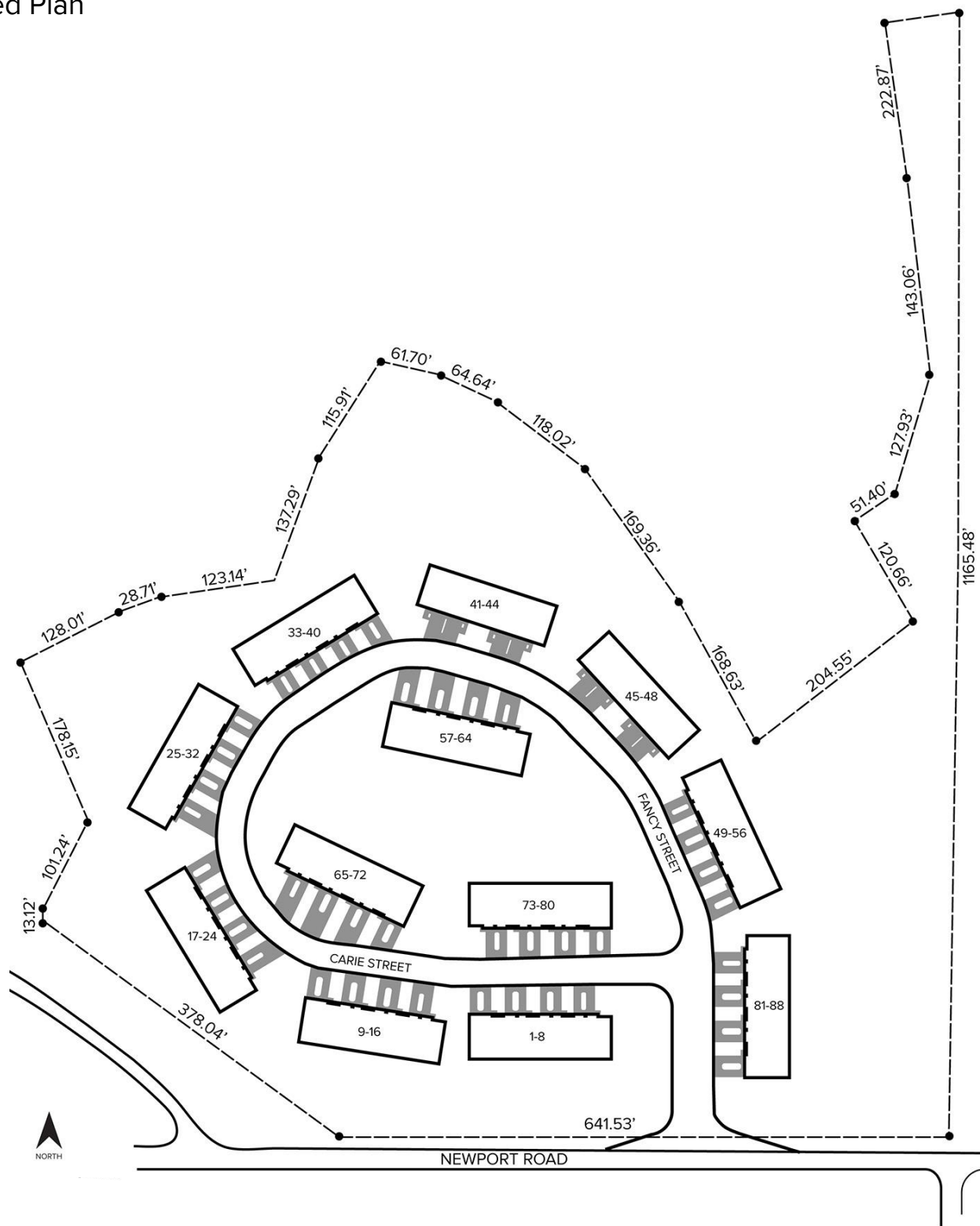
Information is subject to verification and no liability for errors or omissions is assumed. Price is subject to change and listing withdrawal.

Newport Road – Berlin Twp, Michigan

Land For Sale

13.11
Acres
AVAILABLE

Proposed Plan



For more information, please contact:

RICK BIRDSALL
(248) 799 3145
rbirdsall@signatureassociates.com

BRAD VIERGEVER
(248) 799 3146
bviergever@signatureassociates.com

SIGNATURE ASSOCIATES
One Towne Square, Suite 1200
Southfield, MI 48076
www.signatureassociates.com