

New Professional Offices For Lease

Florence, Kentucky



EWING PROFESSIONAL CENTER

7766 Ewing Blvd. Florence, KY 41202

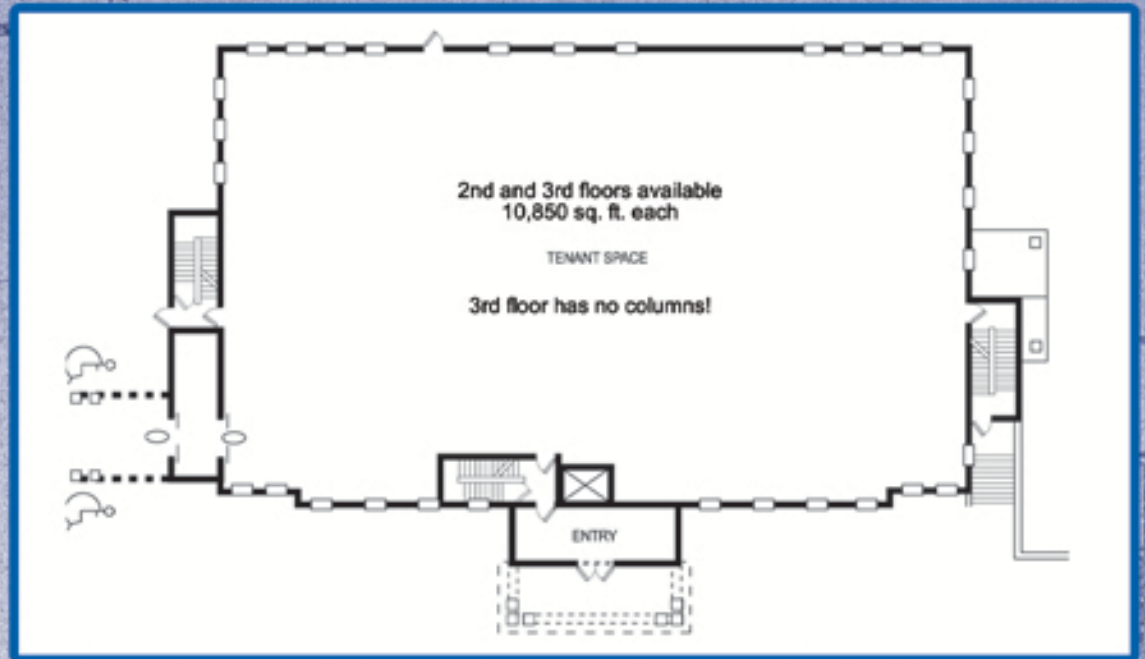
Adjacent to the Florence Government Service Center



- Class A Professional Office Building
- Easy Access to I-75, I-71, I-275, the Airport and all of Northern Kentucky
- Top Two Floors Remain Available
- Dedicated Lobby for Upper Floors Only
- Direct Fiber Optic Connection
- Ready for Buildout and Immediate Occupancy

For More Information....
David Heidrich 859.341.5523





The Zalla Companies develop real estate assets throughout Greater Cincinnati including professional office, multi-family, and industrial properties. Zalla is also currently developing the Chamber Office Park, a 14 building, 250,000 sq. ft. project on Buttermilk Pike in Ft. Mitchell, KY.



EWING BLVD. PROFESSIONAL BUILDING SPECS.

Size	40,600 sq. ft.
Available	21,700 sq. ft.
Smallest/ Largest Contiguous	3,000 sq. ft. 10,400 sq. ft.
Parking	4.5 per 1000 sq. ft.
Occupancy	Immediate
Use	Professional Offices / Medical

