



DAWLEY OFFICE BUILDING

East 26th Street

Office Space For Lease



5010 East Rosa Parks Place
Sioux Falls, SD 57110



size

Suite 101: 2,350 sqft
Suite 102: 2,350 sqft
Suite 201: LEASED
Suite 202: LEASED
Suite 203: 530 sqft



price (nnn)

Suite 101: \$15.75/foot
Suite 102: \$15.75/foot
Suite 203: \$875/month

(NNN est. \$4.75 per foot)



location

Site is located in the brand new Dawley Office Park on East 26th Street next to Rosa Parks Elementary!



layout

Suites 101 & 102: 4 offices, breakroom, open work area, common restrooms.
Suite 203: Wide open executive office.



delivery

Landlord will deliver the space move-in ready in mid-2020.



co-tenancy

Coffea, Starbucks, Dunn Bros., Subway, Firehouse Subs, Casey's, Trademark Homes, Horace Mann Insurance (Ryan Hofer Agency), Rosa Parks Elementary, Avera, Target, Century Theaters

Information deemed reliable but not guaranteed.



Lake Lorraine | 2571 S. Westlake Drive #100
Sioux Falls, South Dakota 57106
VBClick.com | 605.361.8211



605.376.0127
Ryan@VBClick.com

East 10th Street



Future Senior Housing



TARGET

CENTURY THEATRES



Future Commercial Development



Rosa Parks Elementary



East 26th Street



EXTERIOR PERSPECTIVES



SITE PLAN

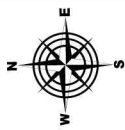


1 SITE PLAN
1" = 40'-0"

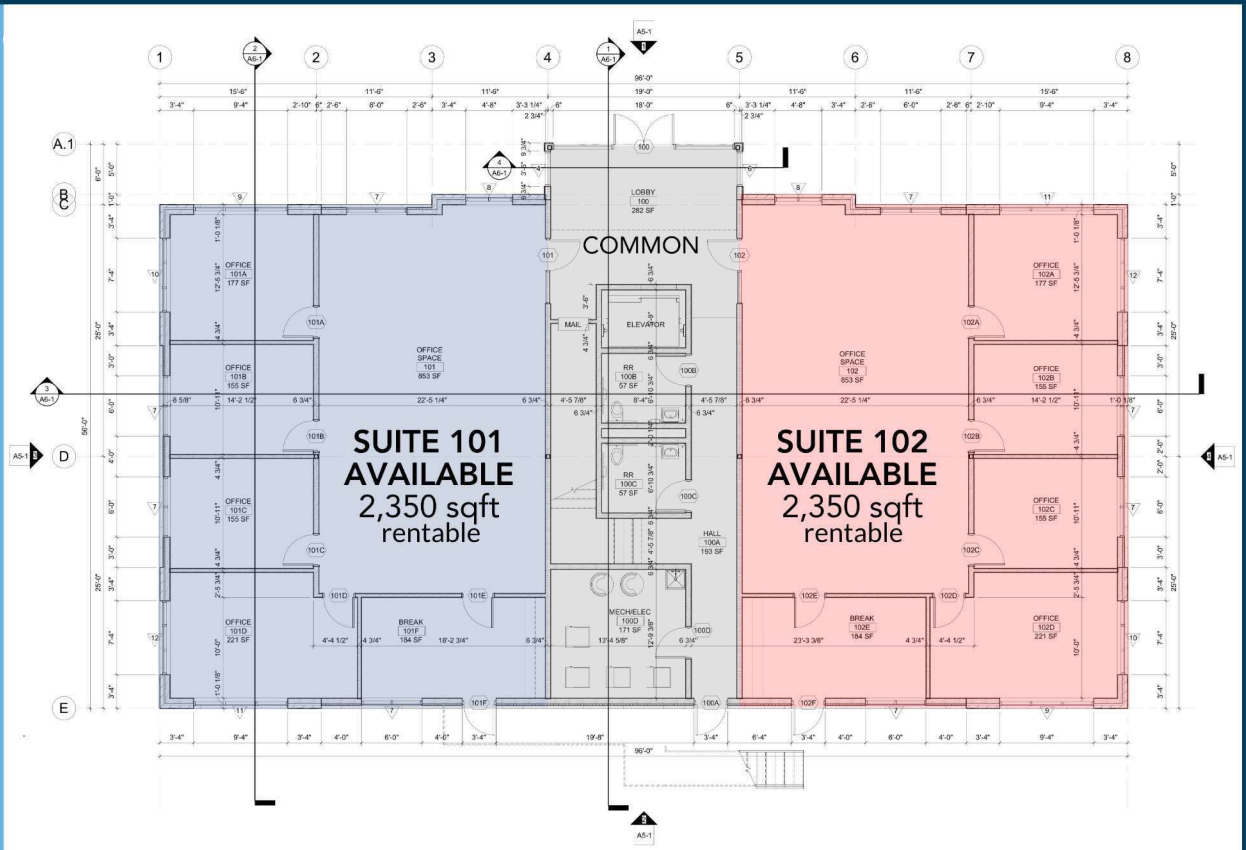
SITE PLAN
4.11.19

DAWLEY OFFICE PARK

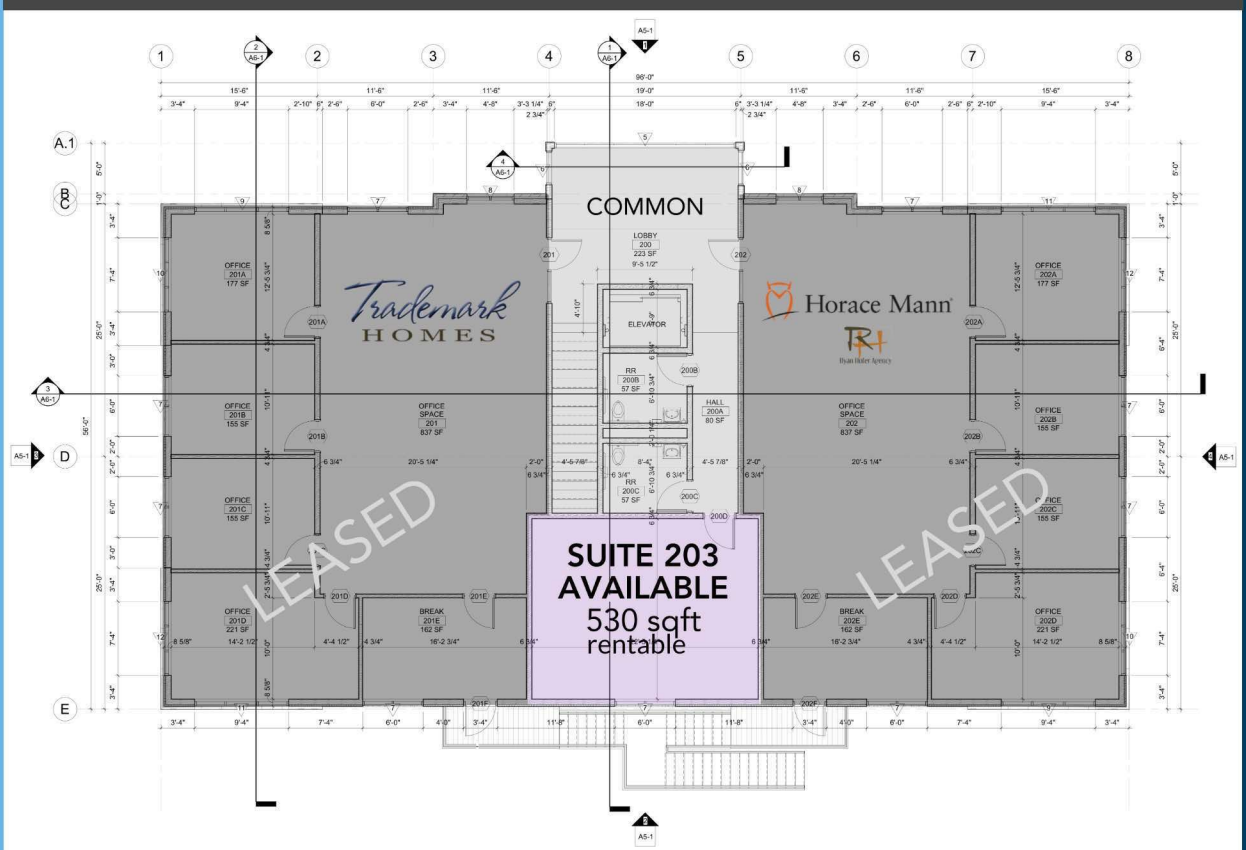
SITE PLAN



FLOORPLANS



First Floor



Second Floor

SUITE 101/102



SUITE 203

